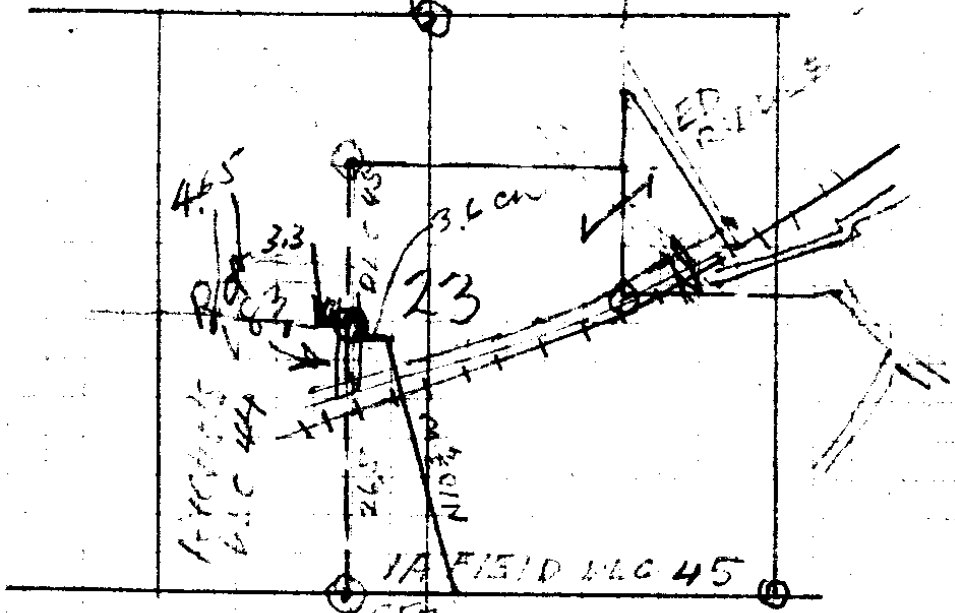


Drove on L.P. Flush in cut Bank of Nickel M.  
 Rd under 8" B.O. which is marked NW Cor 45  
 CSBT - NW B.T.S 14" W.O. S86 E 26.2  
 14" B.O S27 1/2 E 59.6

1. P. 11" W.O. S79 E 34'  
 18"  
 20" B.O. N49 W 50'



Req at Pt 1.7 ch. S. + 1.4 ch E of NE cor. of lot

36	14	66	56	14
66	66	117		
210	132	462		
216	132	66		
2370		117.2		

S on W. Edy. 33 = Cor. CO 44

66	
198	
198	
2178	- Dist bet NW Cor 45 + NE of Pt

570  
 0+110  
 L  
 12.5 R  
 12.5 L  
  
 L  
  
 12.5 R  
 12.5 L  
  
 12.5  
 12.5 R  
 12.5 L  
  
 17.55  
 12.5 R  
 12.5 L

0.43

100.43

6

100.  
 2.61  
 5.22  
 5.49  
 5.10  
  
 7.56  
 7.57  
 7.41  
  
 9.42  
 9.36  
 9.19  
  
 11.80  
 10.41  
 10.35

4.44

97.82  
 95.05  
 94.88  
 92.87  
 92.86  
 93.25  
 91.01  
 91.01  
 88.63  
 88.57  
 88.57

2.3

92.9

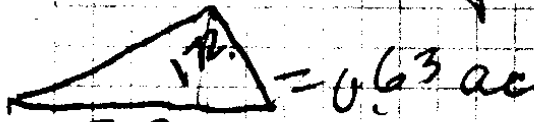
91.5

Antis-Sheep-

32/52

Mar 2-'44

Fullerton  
Riddle



319.5

$$172 \frac{1}{2} = 86$$

319.5

86

19170

25860

27477.0

43560 | 27477.0 = .63

261360

134100

130600

3420

8

.63  
7.37

2m  
1965

2" Ahead  
Red

332°

59'-04"

174

319.5'

8 Ac ±

808.7  
South

3/4" Pipe

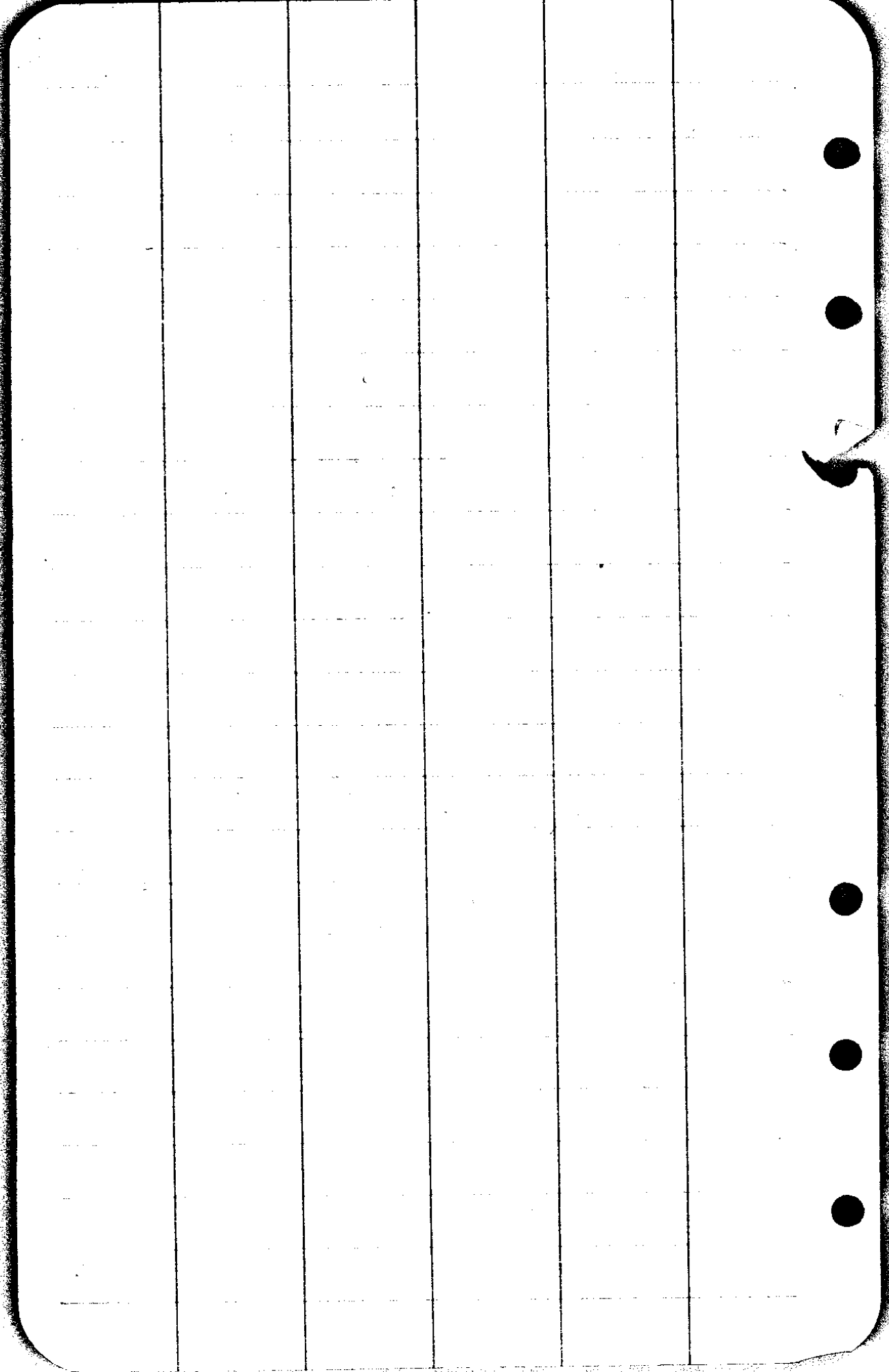
Fullerton

Watch for  
this jag.

week of Feb 21 to 27

Mike Swaney - in house -

Bench with prune orchard = 8 Ac ±



T30S  
RGW

82.0  
297.0  
298.8  
1200.

1077.8

15  
1062.8

NW Cor Fullerton to S11-2826.3'S. of  
S 559<sup>5</sup> N.W. Cor. D.C. 45.

E 92.4

N Line Fullerton

68.0

N LINE DLCH

21.1

300 F

cem. 15' N = SE Cor Cam

300 F

300 F

300 F

300 -58<sup>0</sup> 298.8

300 P

S 300' -8<sup>0</sup> 297.0

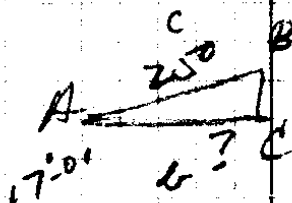
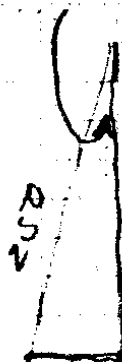
S 82.0 F

NW Cor  
DLCH

cem Cor  
1518'S + 132'W  
1278  
60  
2916

1877.8

$$\begin{array}{r} 90^{\circ} - 08' \\ 73^{\circ} - 07' \\ \hline 17^{\circ} - 01' \end{array}$$



$$\cos A = \frac{b}{c}$$

$$b = \cos A \times c$$

$$\begin{array}{r} 956.22 \\ \hline 4781.00 \\ 191.244 \\ \hline 239.05500 \end{array}$$

(6)

(6)

CS FILE FOLDER

CONTAINS

MORE

INFORMATION