

919  
885.9  
885.9

N-Line lot 4 919

885.9 to 60' R/w width 105'

105'  
328.3

783.6

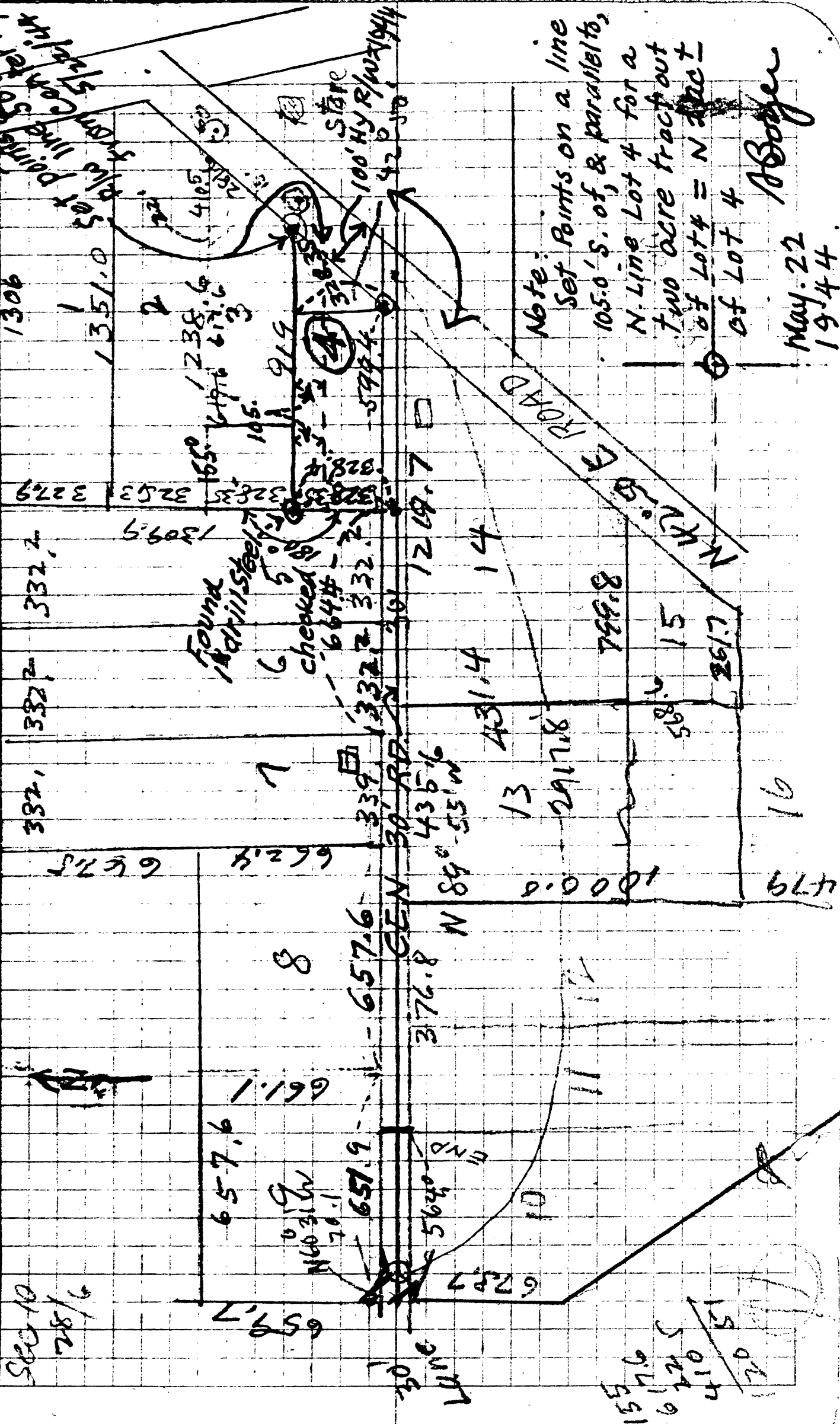
566.3

590.4 ✓

599.5  
566.3

R/W

1220'



Note: Set points on a line  
 105.0' S. of, & parallel to,  
 N. Line Lot 4 for a  
 two acre tract out  
 of Lot 4 = N 100'  
 of Lot 4

May 22  
 1944

A. Boyer

61 225  
 41 105  
 105

500 10  
 28 1/6

157.6  
 672.5  
 410.5  
 70

1306

1351.0

Found  
1 drill steel

checked 6

Store

339  
 30' RR  
 435.6  
 N 89° 55' W

ROAD  
 150' N 75° E

332.7

327.9

332.7

647.5

1309.9

328.4

328.4

332.7

622.4

8

657.6

N 60° 31' W  
 70.1

657.6

376.8

30' Line

N 10° 11' W  
 564.0

13

431.4

1000.0

2917.8

11

799.8

58.6

15

261.7

16

647.9

1306

1351.0

Found  
1 drill steel

checked 6

Store

339  
 30' RR  
 435.6  
 N 89° 55' W

ROAD  
 150' N 75° E

332.7

327.9

332.7

647.5

1309.9

328.4

328.4

332.7

622.4

8

657.6

N 60° 31' W  
 70.1

657.6

376.8

30' Line

N 10° 11' W  
 564.0

13

431.4

1000.0

2917.8

11

799.8

58.6

15

261.7

16

647.9

919  
59914  
2/15/84

759.20  
329.11

22776  
60736  
15584  
22776

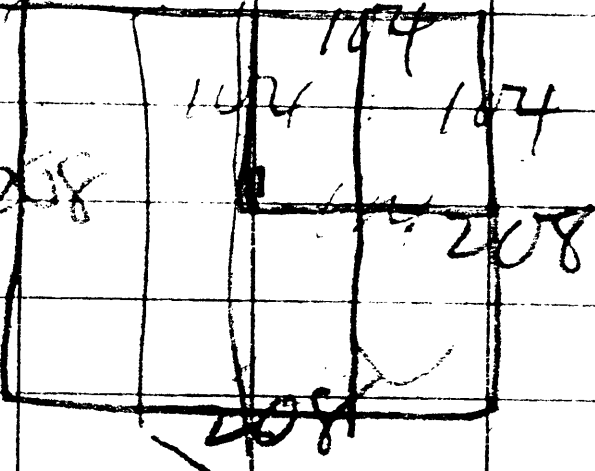
2492  
40736

450 x 30 = 13500  
600 x 15 = 9000  
43500 | 22500.00 (.5)

192000

43500 | 249245.36  
217800

304920  
304920  
957320



572  
881

572  
51

208

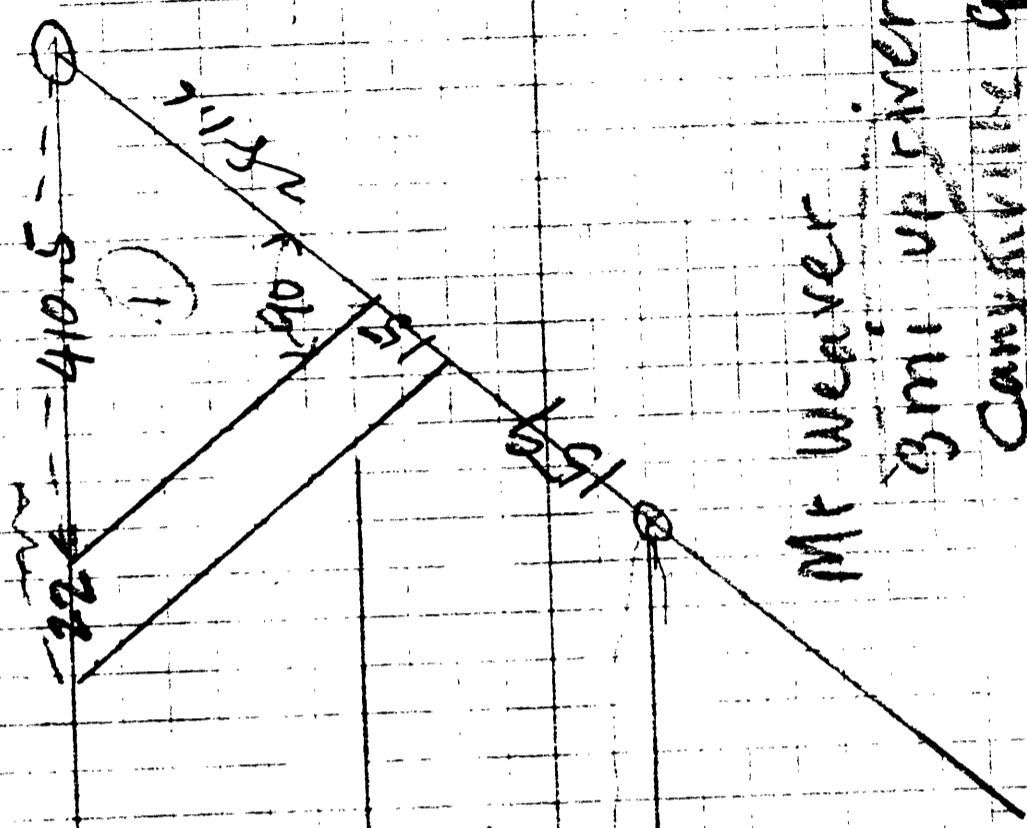
4530  
2500

15600  
9000

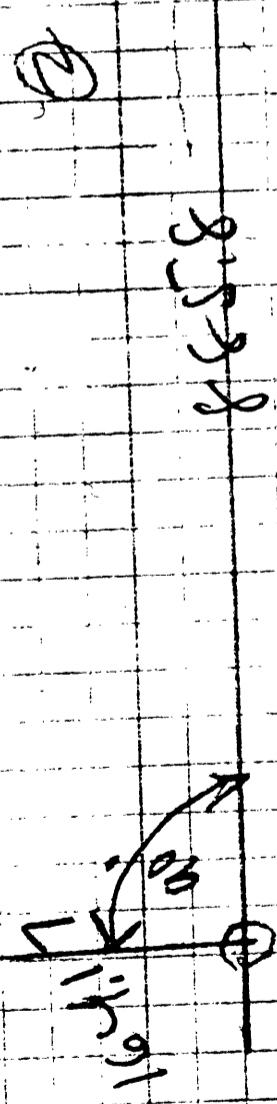
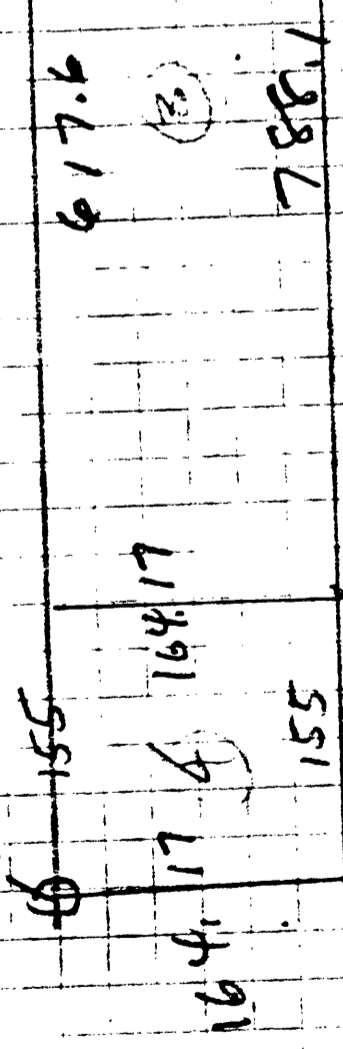
572  
521

32/37

Top of  
Canyon



Mt Weaver  
3 mi up river from  
Canyonville get  
white in canyonville



43560) 87643 (201  
 87120  
 52300  
 43560

Reset  
by  
Bunker

328  
 117  
 117  
 117

