

Phillips on

12
66
—
22
22
—
7,92

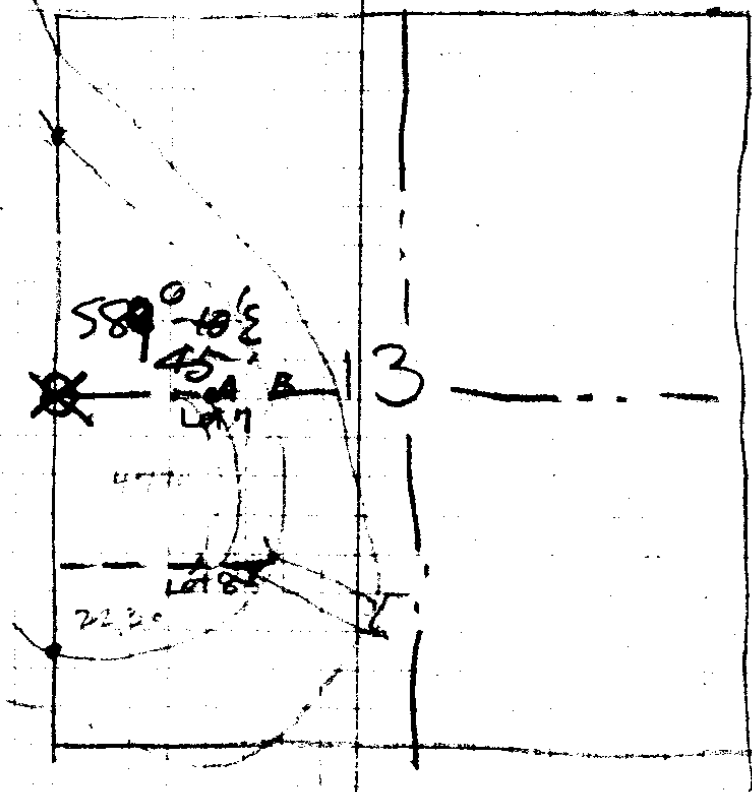
A 568
167272
15" Map

24
7
Edge River
10" Myrtle
S37E

14

3196

val 8



cor 13-14-23-24

- 12" map N10°E 25 Z
- 12" Allen N25W 28
- 60" Fir S30E 35
- 15" P S48W 36 Z

23

24

● N bet 13+14

9.8 = Creek

5.0 trail

5.5 = meander

- 15.40 = 10" Oak = M.C. { 12" maple S20E 40 Z
- 29.5 Perp Rock - 25' high { 15" Myrtle S5W 69 Z
- 40 Oak to cor { 15" Oak N40E 10 Z
- 2x2x30 Rock { 12" " N75W 32 Z
- { 6" Fir S80W 5 Z
- { 12" " N85E 12

N
64.4 = 10" Myrtle
for m.c.
10" Map. S80W
2 Z
50' led
S60E 33 Z

A

Along E side of RA
30' out from E

N 41° 05' W	239.0	
N 39° W	190.0	
N 35° W	218.0	✓
N 30° W	165.0	✓
N 30° W		N 30° 10' W ✓
N 23 1/2° W	210.5	✓
N 18 3/4° W	444.5	✓
N 69 1/2° W	107.0	✓

30' N of W End Bridge at Rt Ls to Bridge

S 9° W	141.6	✓	
S 13° E	146.3	✓	
S 10 1/2° E	108.0	✓	
S 3° E	79.0	✓	
S 28 3/4° E	91.0	✓	
S 41° E	84.5	✓	
S 24° E	72.4	✓	
S 22° 00' E	73.0	✓	+ 1242 197.0

S22°E 124.0 ✓
 S34°E 130.0 ✓
 S33°E 158.0 ✓
 S29½°E 93.0 } 2257.
 S29½°E 132.7 }

B (301.1 from A to B.)

28.7
 62.4
 72.4
 19.0
 118.6

929.2
 40.4
 888.8

A 929.2' to Pt "A" = NW corner tract
 40.4 = NW corner tract

159.
 40.4
 118.6

CONCORD = 888.8 EAST of W 1/2 cor

JUST W. OF Rd 76.5 - 29.0 = 66.9
 66.2 - 16.0 = 63.6
 186.0 - 14.0 = 180.5
 152.3 - 13.0 = 148.4
 174.0 - 21.0 = 162.4
 121.0 - 32.0 = 102.6
 S89°45'E 165.0 - 33.0 = 138.4 ✓
 838.7

1 29.7 - 29.0 - 00' = 26.0
 W 1/2 cor L3 894.6