

$\tan A = \frac{a}{b}$
 $a = \tan A \times b$
 $1.8684 \times 30 = 56.052$

0.502×956.5
 478.763
 478.763
 478.763
 478.763

$44,244 (10)$
 $48,520$
 $2,276$
 $2,276$
 $2,276$
 $2,276$

798
 $23,940 = Hy$
 $2,304.0$
 $20,636.0$

50.4
 14.4
 83.2
 77.7
 13.7
 66.0

80.0
 13.2
 13.2
 13.2
 13.2

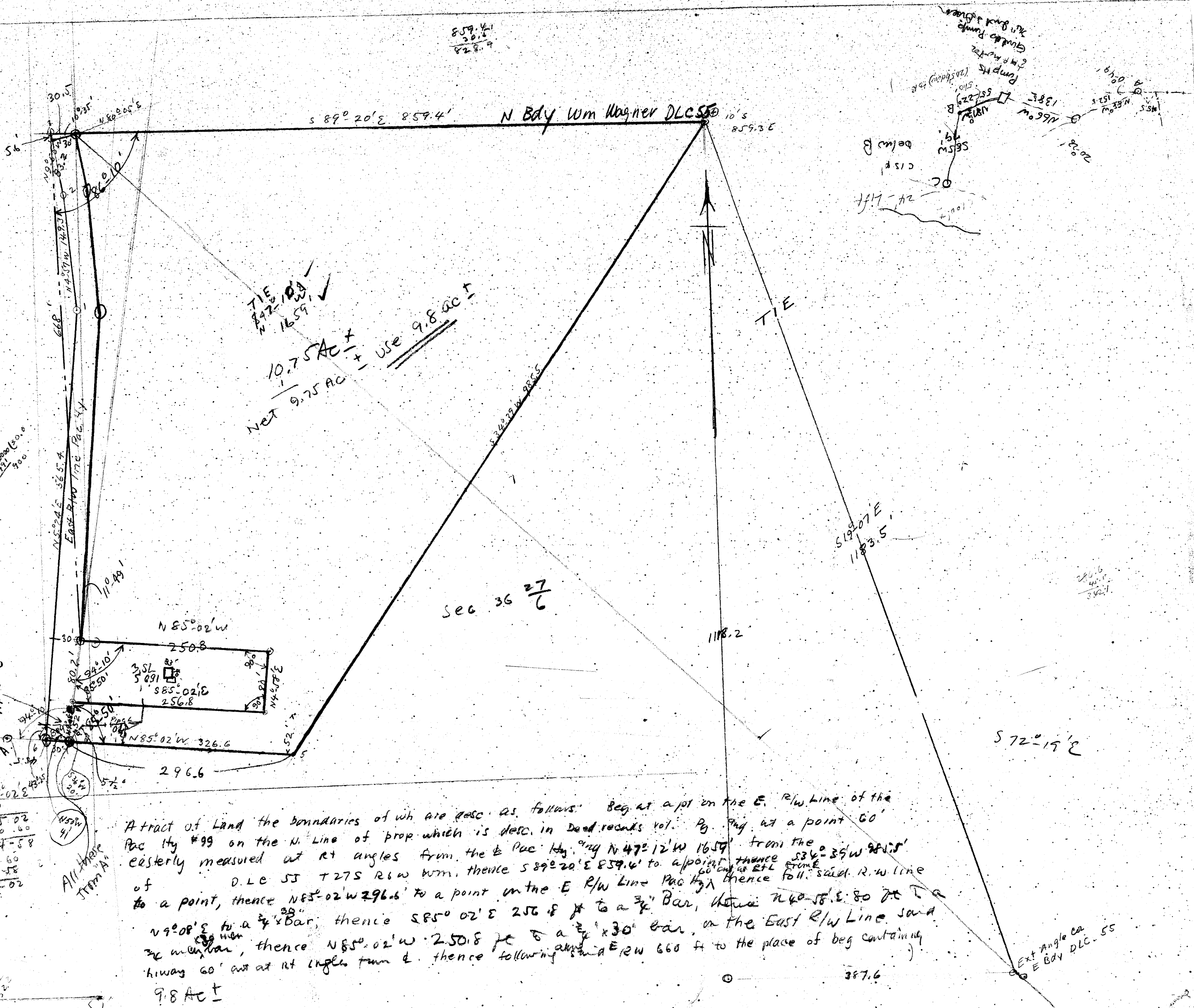
80.0
 13.2
 13.2
 13.2
 13.2

330.0
 19.0
 19.0
 19.0
 19.0

175.02
 180.00
 4.58
 90.00
 4.58
 85.02

132.0
 132.0
 132.0
 132.0

859.4
 30.5
 828.9



A tract of Land the boundaries of wh are desc. as follows: Beg. at a pt on the E. R/W Line of the
 Pac Hg #99 on the N. Line of prop which is desc. in Deed records vol. Pg. 94 at a point 60'
 easterly measured at rt angles from the E. Pac Hg. by N 47° 12' W 16.59' from the
 of D.L.C. 55 + 27S R/W Wm. thence S 89° 20' E 859.4' to a point thence S 34° 35' W 98.15'
 to a point, thence N 85° 02' W 296.6' to a point on the E. R/W Line Pac Hg. thence foll. said R/W line
 N 85° 02' W 326.6' to a 3/4" Bar, thence N 40° 58' E 80.00' to a
 3/4" Bar, thence S 85° 02' E 256.8' to a 3/4" Bar, on the East R/W Line said
 highway 60' at rt angles turn E. thence following said E/W 660' to the place of beg containing
 9.8 Ac ±

Ext. Angle ca.
 E Bdy DLC-55