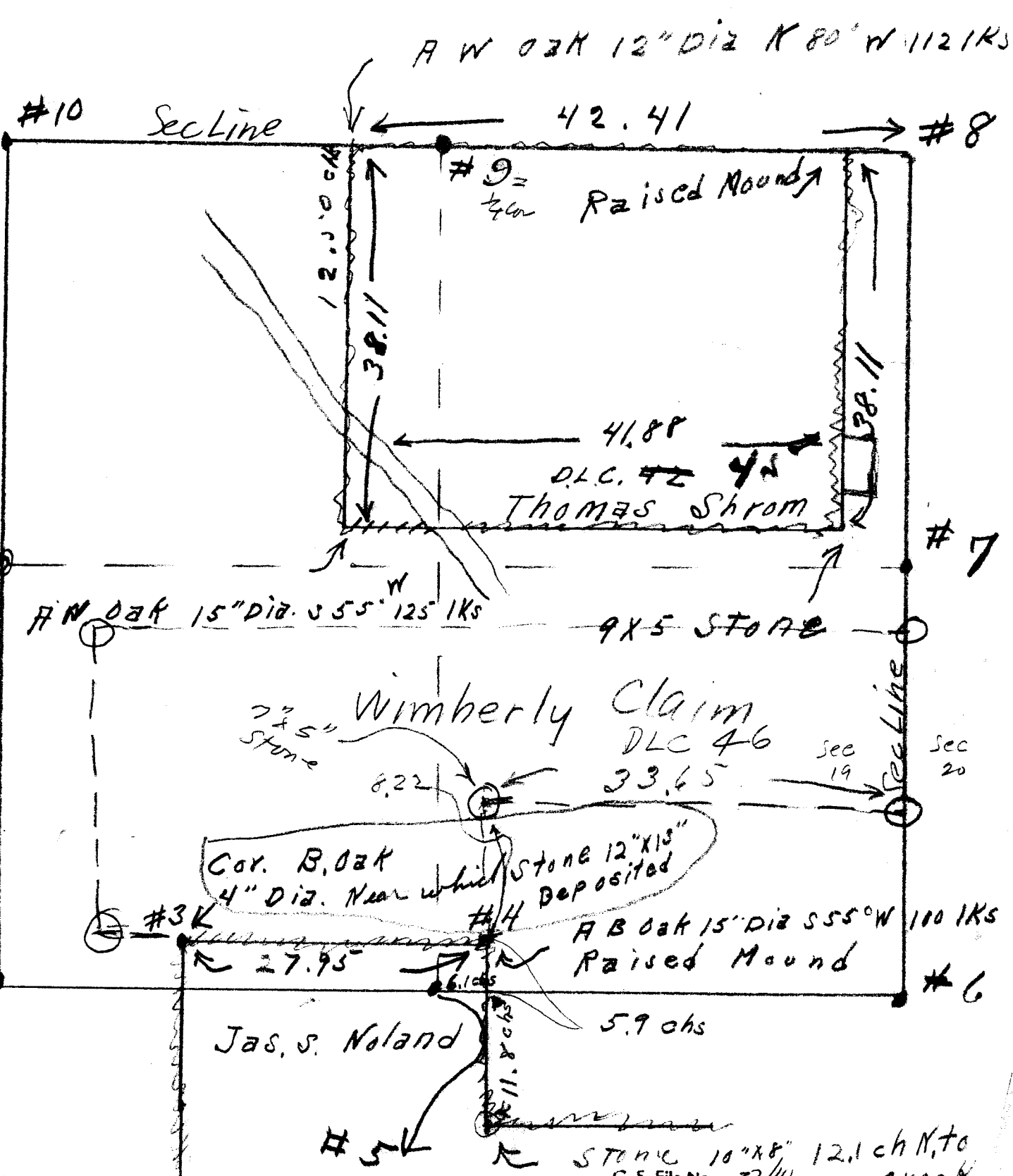


SURVEY
To LOCATE
S.W. COR. SHRUM D.L.C. No 42.
Sec. 19 - Tp. 26S - Rg. 3W - W.M.

Sec. 19 - T 26 - 3 W W.M.



A W Oak 12" Dia N 80° W 112.1 Ks

#10

Sec Line

42.41

#8

#9 = $\frac{1}{4}$ cor Raised Mound

12.00 ch

38.11

41.88

D.L.C. 42 45
Thomas Strom

38.11

#1

A W Oak 15" Dia. S 55° W 125.1 Ks

9x5 Stone

#7

7x5" Stone
Wimberly Claim
D.L.C. 46

8.22

33.65

Sec 19

Sec 20

Cor. B. Oak
4" Dia. Near which Stone 12"x13"
Deposited

#3K

#4

A B Oak 15" Dia S 55° W 100.1 Ks

Raised Mound

#2

27.95

6.1 chs

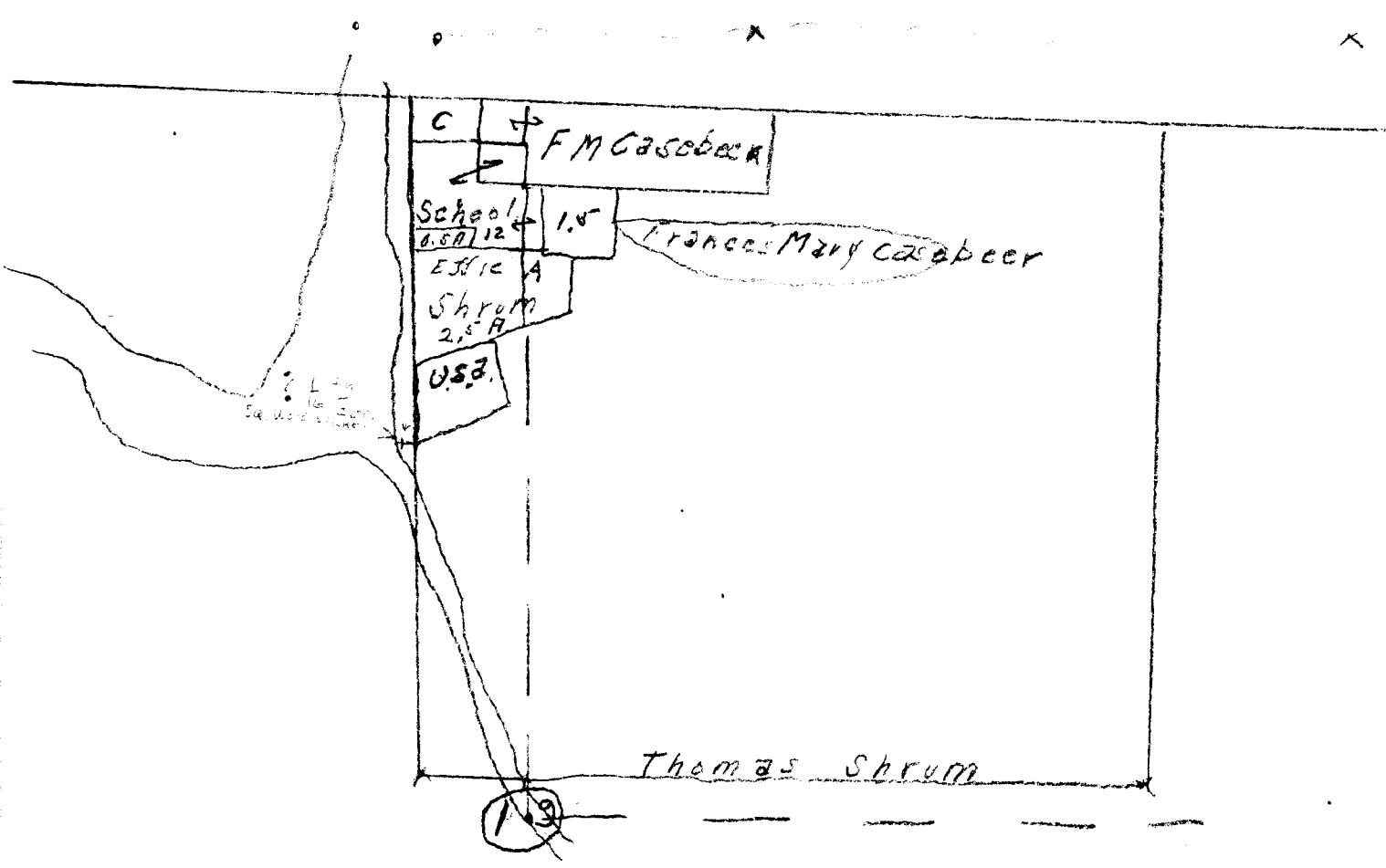
5.9 chs

Jas. S. Noland

#5K

Stone 10"x8" 12.1 ch N. to
Creek

C. S. File No. 32/10



#8

Raised mound for cor. 17-18-19-:
No trees convenient

#9

1/4 cor. 18-19 Rifle Barrel?

A Red Fir 28" Dia S 53° E 38 1Ks

A B Oak 15" " N 35° E 68 1Ks

#10

Cor - 13 - 24 - 18 - 19

A Myrtle 4" Dia N 29° E 16 1Ks

" " 15" " S 43° W 13 "

" " 6" " N 73° W 27 "

" " 6" " S 28° E 40 "

RENEWED.

2

Cor 19-30-24-25
An Oak Stake For Cor.

An Oak	25" Dia.	N 61° W	134	1 Ks
"	" 30"	S 48° E	80	"
"	" 30"	N 78° W	239	"
"	" 30"	S 54° W	229	"

4

N.E. Cor. Koland CL.

Am Oak	10" Dia	S 56° 30' W	44.3 Ft	
"	" 10"	N 36° 30' E	192 Ft.	(Sond)

1

1/4 cor. 19-24

A B. Oak	10" Dia	S 40° E	44	1 Ks
"	" 14"	S 25° W	35	"
"	" 30"	N 30° W	12	"

65 N 6 M 07

3

N.W. Cor. Noland CL.

An Oak 18" Dia S 43° E 43.5 Ft (Tree gone)
 " " 40" " S 17° W 8 Ft. (Badly Dec)

5

1/4 Cor Bet 19-30

A.W. Oak 15" N 4° W 347 lks
 " " " 8" S 74° E 130 lks

6

Cor. 19-20-29-30

Raised mound

Observed House N 42° W 450 lks

7

1/4 Cor. Bet 19-20

A.B. Oak 15" Dia S 75° E 67 lks
 A Pine 25" " N 78° W 78 lks

CS FILE FOLDER

CONTAINS

MORE

INFORMATION