

FILED

Vol. W

MAR 19 1979

COUNTY SURVEYOR
DOUGLAS COUNTY, ORE.

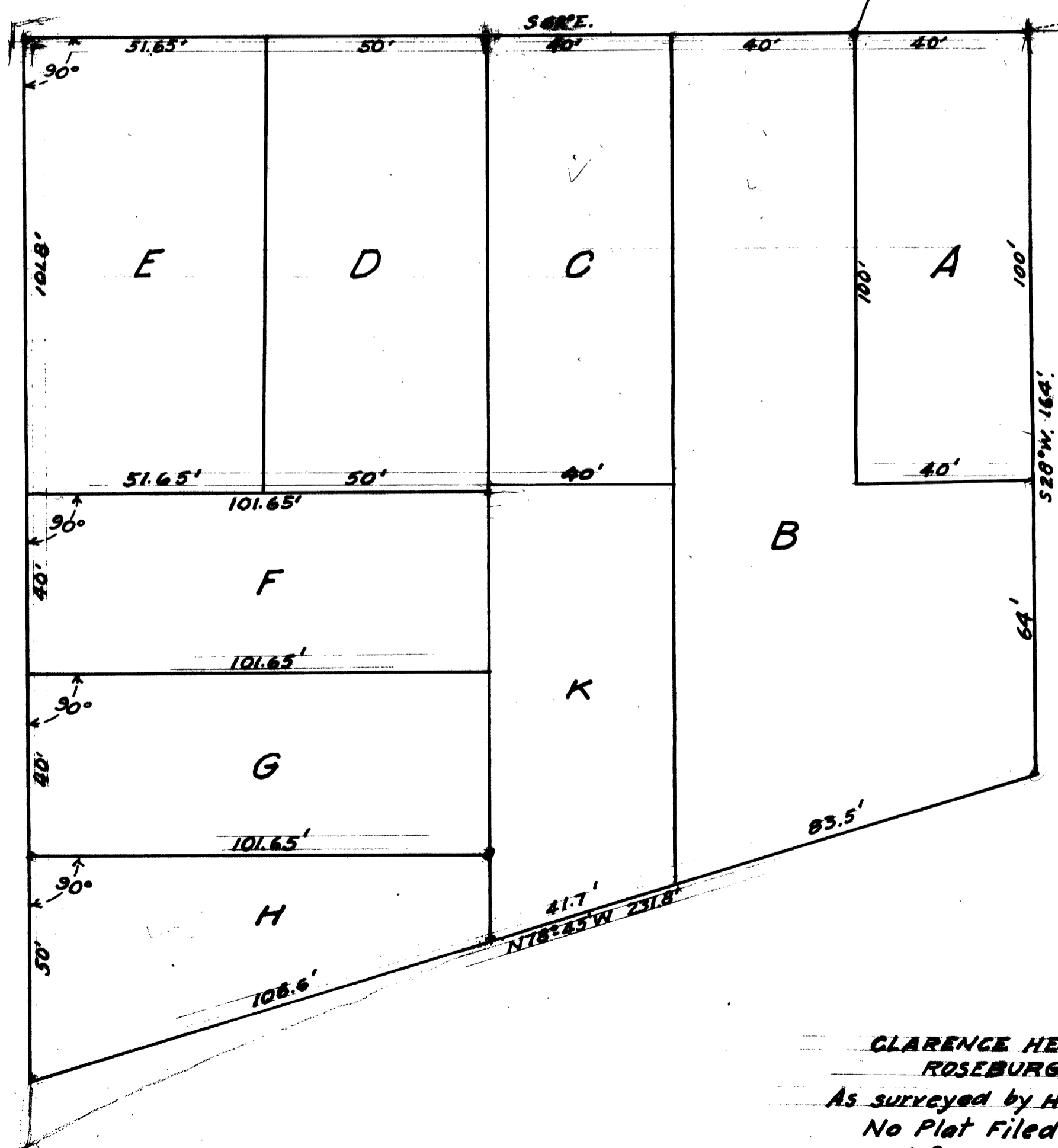
Conc. St. Mount.
Intersect. Burk
and Pine Sts.

Block 90

SOUTH STREET

PINE ST.

MILL ST.



CLARENCE HESS LOTS
ROSEBURG, ORE
As surveyed by H.L. Eppstein
No Plat Filed with Co. Clerk
Traced from B. Print by A.B. Aug. 1939.

DRAWER 50

C.S. File No. 31/58-1

CS FILE FOLDER

CONTAINS

MORE

INFORMATION