

# "Jack" Doyle Property

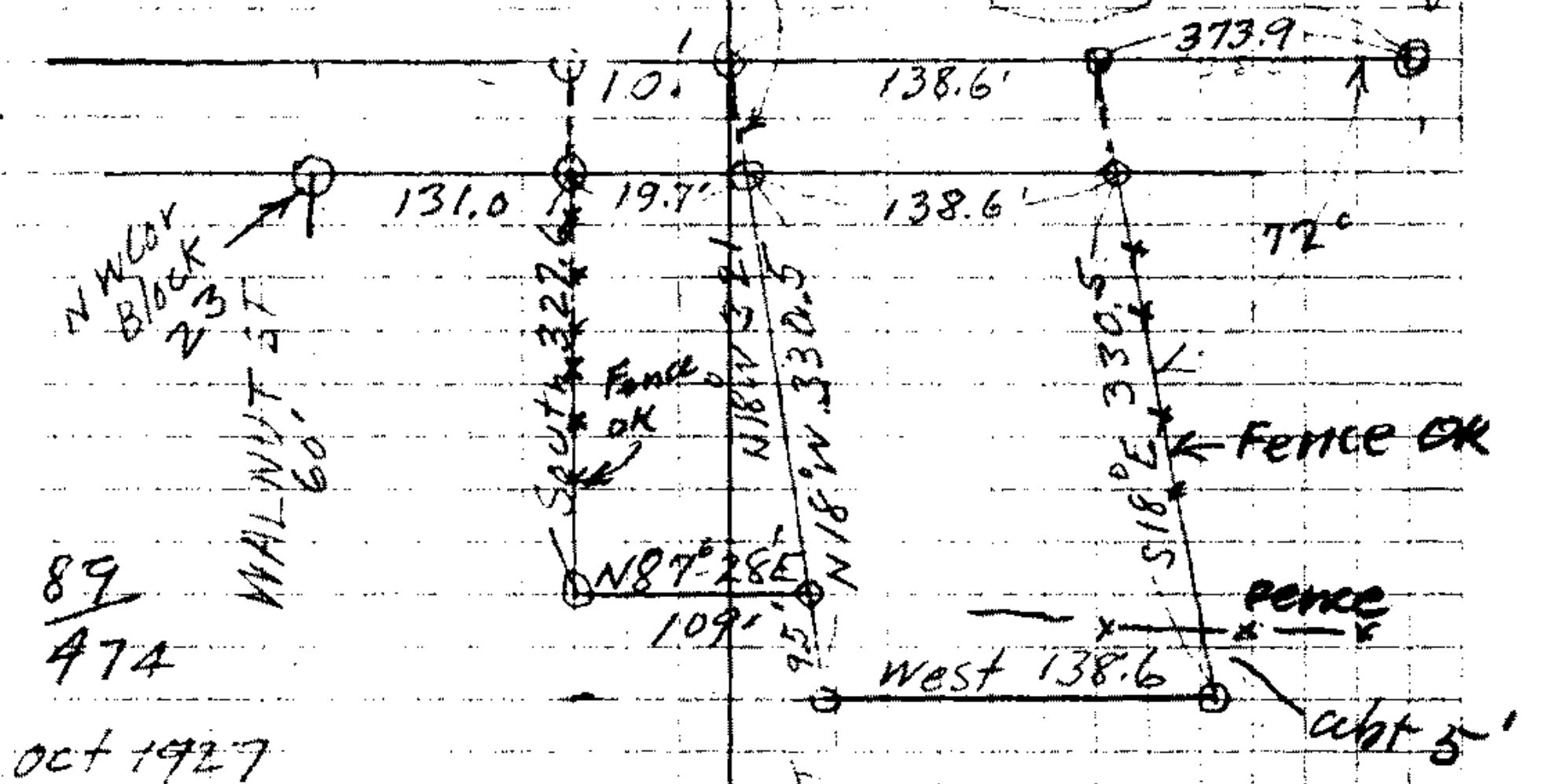
37-37

June 17-143

STOCK 91.5

1764-762,2  
512.5

NE COR  
DLC 56



89  
474

Oct 1927

~~HP + Elva Dwyte~~

95/581 ?

66/131 (2)  
66 ) 37716 (57  
330

66 ) 330.5 (50  
330  
476  
462  
40  
66 ) 147.7  
138.6  
9.1

Sec 13 27  
6

66 ) 327.4 (49.0  
264  
636  
594  
42  
66 ) 147.7  
138.6  
9.1

89/474 Oct 8, 1927

66 ) 31.5 (47  
264  
510  
23/245  
redication

beg at pt in n bdy Bl 23, Reverse  
131' E of nw cor said Block B, thence  
south, parallel with w bdy Block  
23, 327.6' thence N 87° 28' E 109'  
thence with the E. line Plot 2  
N 18° W (as recorded) 321' thence  
west with the n. bdy block 23  
19.7' to beg - Pt lots 2, 3, 4, 11, Bl 23

also beg at pt in a line of Hunt  
D. L.C. 56 7 chs 76 1/2 lks. W of  
nr cor of L.C. 56 th S 18° E 31.5'  
to beg: th E. + par. with n. line  
D.L.C. 56 138.6' th S 18° E 330.5' th west  
138.6' th N 18° W 330.5' to beg = loc

31/37

Riverside Add. To Roseburg Block #23

Twp.

~~44~~

27

Range

8W

Sect.

19

Name

Jack Doyle

Surveyor

A. Boyer

Date

June 17 1943

Part of Lots #2-3-4-11, Block 23.

Riverside Add. To Roseburg.

Sur. File

~~44-37~~

Map

31-37