



141.8 144.3  
 6.5 3.7  
 300  
 137.8  
 10.2  
 300  
 (36.6)

146.1 144.0  
 1.92 4.0  
 280 400  
 H1 148.03  
 8.1400 9.238.7  
 200 100

145.4 135.5  
 2.6 12.5  
 9 100  
 132.7  
 10 3.27.7  
 100

128.4 127.3 127.8  
 5.1 6.2 5.7  
 200 300  
 120.0 125.1 124.9  
 10.9 8.4 8.6  
 202 300

128.4 12.89 31.0 130.5 127.1 121.8 121.0 119.2 120.8 120.9 121.1  
 5.1 4.6 2.5 3.0 6.4 11.7 12.5 14.8 12.7 12.6 12.4  
 300 200 100 100 112 147 200 300

121.7 118.1 123.1 120.4 118.1 112.6 117.7 117.2  
 11.8 12.1 10.2 13.1 13.1 15.9 15.8 16.3  
 300 200 100 100 73 200 300

H1 133.48  
 120.0  
 120.0

116.1 116.6 116.8 116.7 114.7 112.9 112.9 112.6 117.7 117.2  
 3.0 3.5 2.7 3.4 4.4 5.1 5.1 4.3 5.0 4.8  
 300 200 100 100 93 100 200

111.0 111.6 111.2 111.7 111.2 110.8 110.6 111.7  
 8.1 8.1 7.4 7.4 7.4 7.1 7.0 7.7 7.4  
 300 200 100 100 100 100 200

H1  
 119.1  
 119.1

106.7 107.0 108.3 107.9 108.5 108.1 108.5 109.2 109.1 109.0 108.6  
 12.4 12.1 10.8 7.7 7.5 10.1 10.1 9.9 10.0 10.1 9.5  
 300 200 100 100 88 50 100 100 100 200

106.7 106.5 106.5 106.3 106.8 107.3  
 2.4 2.4 2.6 2.1 2.1 1.6  
 106.5 100 200 300

H1 Elev 108.9  
 104.8 106.9 104.2 105.1 104.8 104.8 105.2  
 4.1 5.0 4.7 4.8 4.1 3.7

102.5 102.7 101.5 101.5 101.7 101.7 101.4 102.9 102.2 102.6  
 6.4 6.1 7.1 7.4 7.2 7.2 6.5 6.1 5.9 5.3

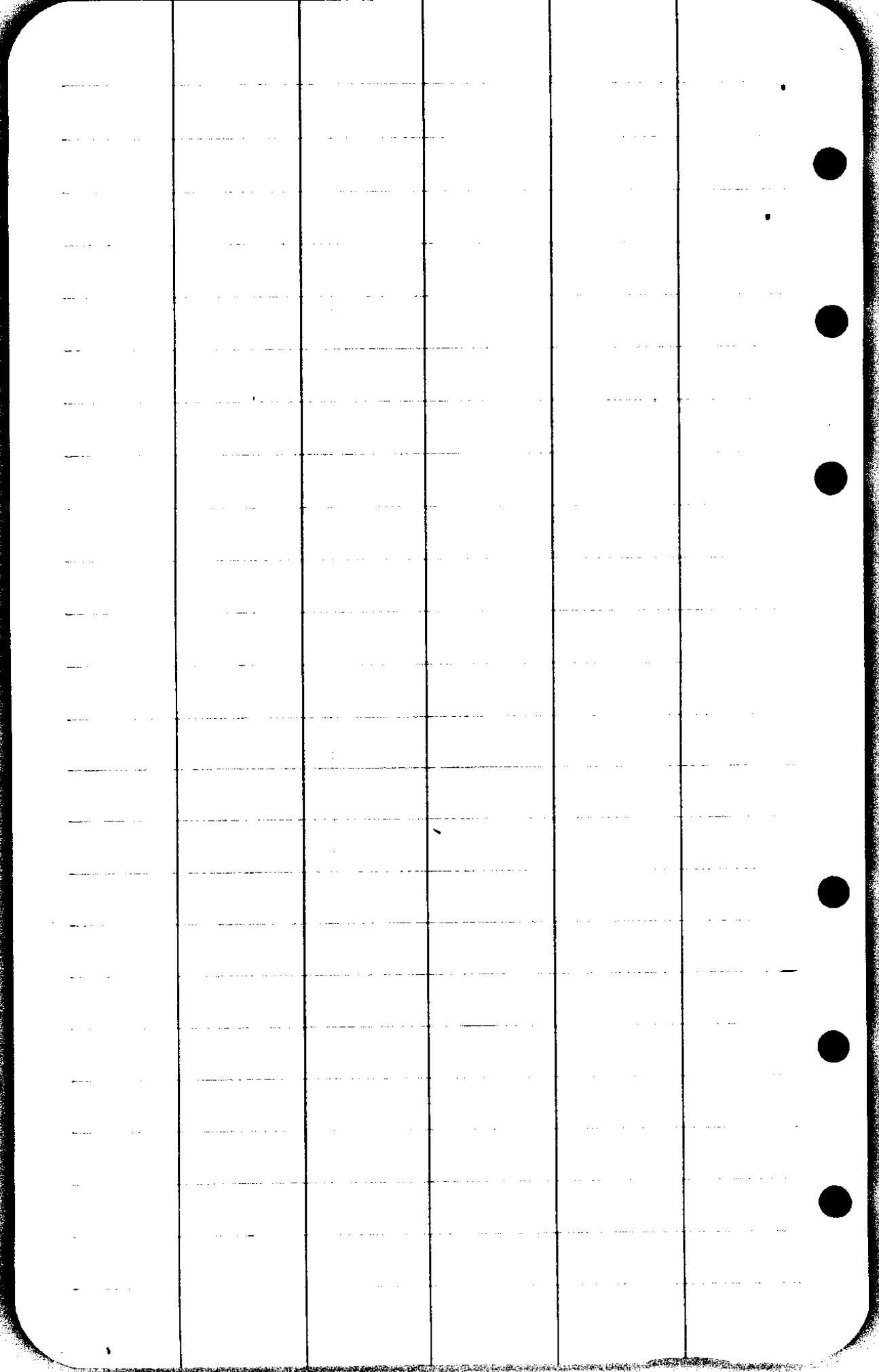
101.4 101.2 100.9 100.1 100.0 101.4 101.8 102.4 102.9 102.9  
 7.5 7.7 8.0 8.8 8.9 7.5 7.1 6.5 6.0 6.0

100.5 100.5 100.2 99.6 99.8 101.0 101.4 101.9 102.4 102.9  
 8.7 8.4 8.1 9.3 9.3 8.9 7.5 7.0 6.2 6.3

265 100.4 4.7 5.6 101.9 102.6

265  
 51.7  
 226.5

spike BM  
 5 x 4  
 2.0  
 3/27



737.1

368.5

368.5

4

8

7

6  
5  
4  
3  
2  
1  
0  
1  
2  
3  
4  
5  
6  
7  
8  
9  
10  
11  
12  
13  
14  
15  
16  
17  
18  
19  
20  
21  
22  
23  
24  
25  
26  
27  
28  
29  
30  
31  
32  
33  
34  
35  
36  
37  
38  
39  
40  
41  
42  
43  
44  
45  
46  
47  
48  
49  
50  
51  
52  
53  
54  
55  
56  
57  
58  
59  
60  
61  
62  
63  
64  
65  
66  
67  
68  
69  
70  
71  
72  
73  
74  
75  
76  
77  
78  
79  
80  
81  
82  
83  
84  
85  
86  
87  
88  
89  
90  
91  
92  
93  
94  
95  
96  
97  
98  
99  
100

drained

957.1

265

326.7

2 AC

326.7

265

471.5

737.1

31/27

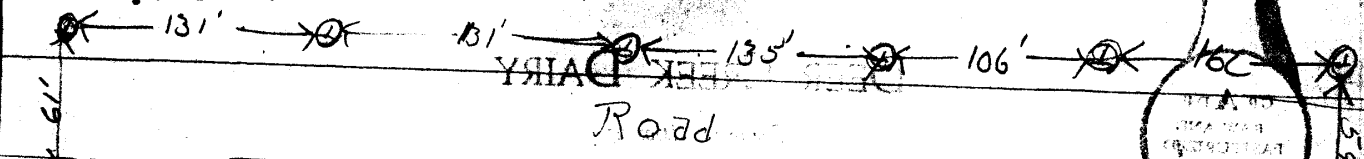
AUG. 5-43

TS	HI	-S	Elev	
8.9	108.90	<del>108.9</del>	100.	BM.
⊙		1.24	107.66	
11.42	119.08			
⊙		1.15	117.93	
15.55	133.48			
⊙		0.27	133.21	
14.82	148.03			
BM NW corner on oak post	}	5.75	142.28	BM
⊙		15.9	132.13	
0.91	133.04			
⊙		15.68	117.36	
0.25	117.61			
⊙		17.55	100.06 ✓	CHECK BACK ON BM.

107.5  
117.5  
127.5

Phone Poles

Telephone Poles



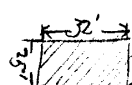
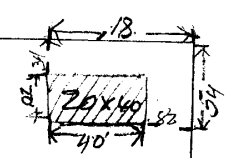
59 ft from fence  
 water line - 17" x 12  
 Telephone line  
 Power line poles

92' well

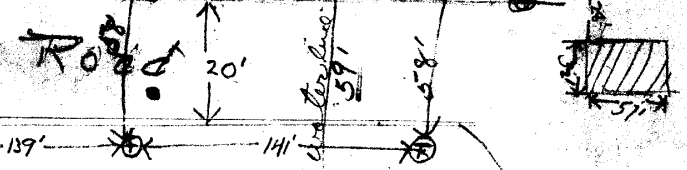
Black mud

Poles 2' from fence  
 Poles 5' from fence

92' well



114' distance 235'

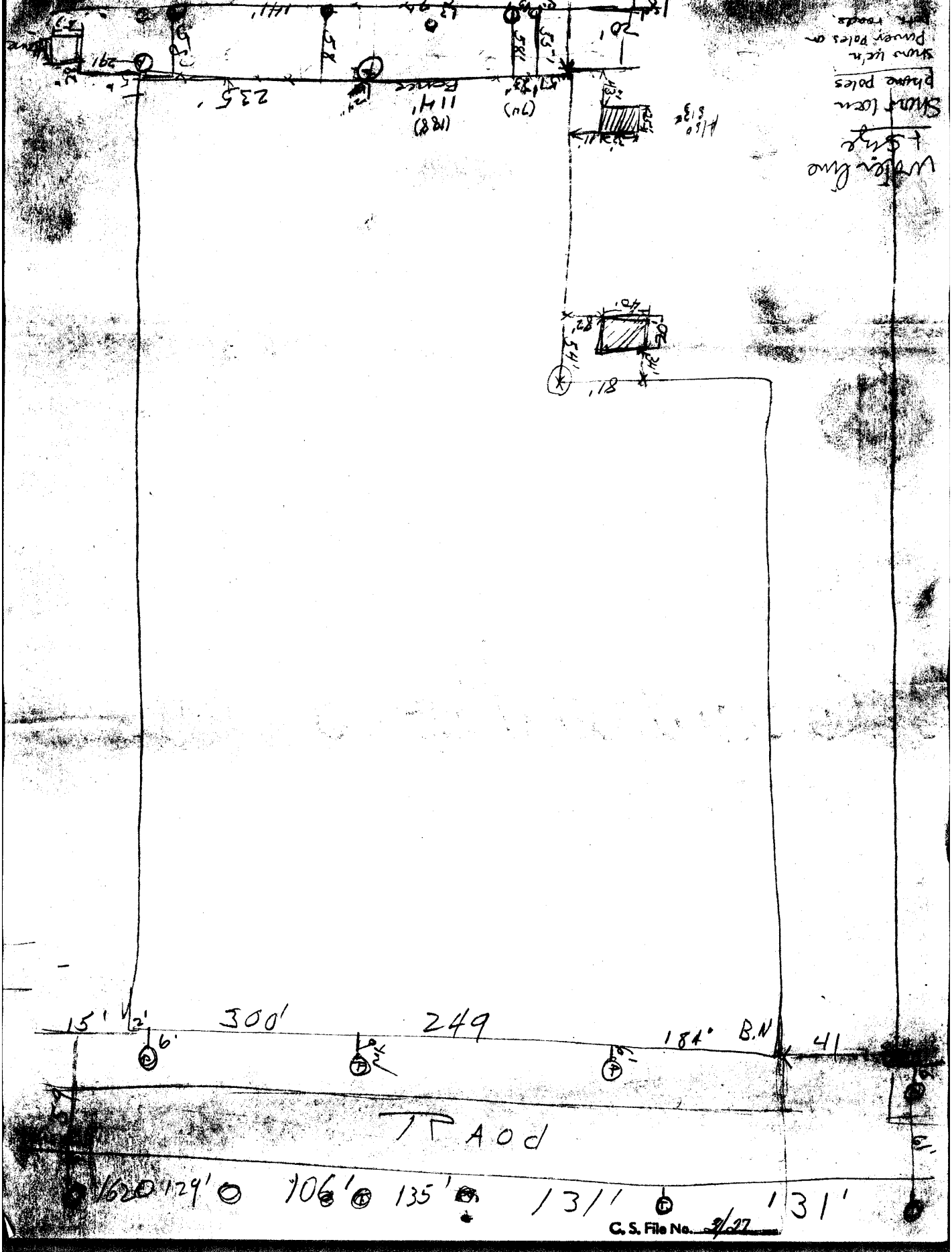


C. S. File No. 21/27

1-4" water line - 3" below GS.

6" casing

Water line  
+ sign  
Show locn  
Phone poles  
Show locn  
Power poles on  
with roads



C. S. File No. 9/27