

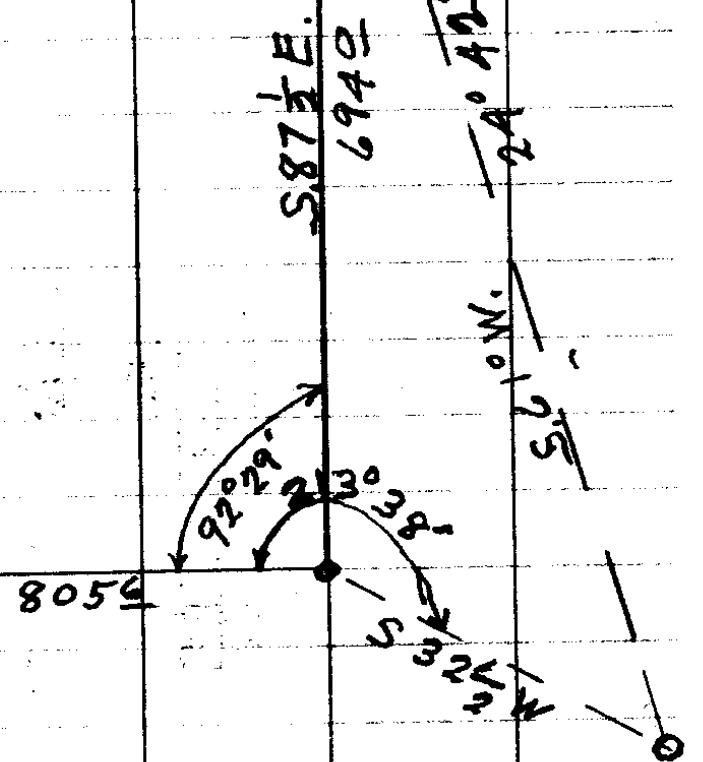
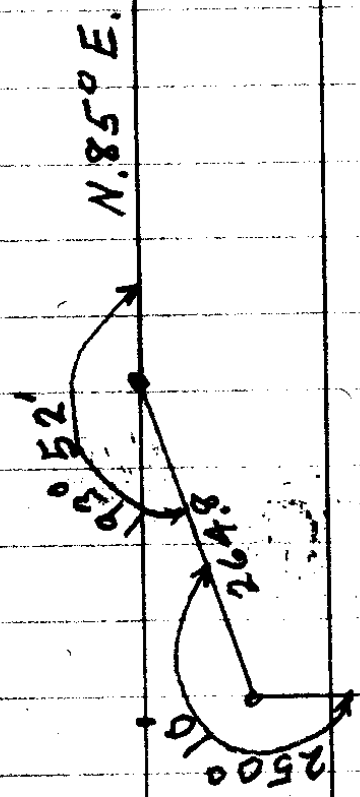
Youngs Bay Lbr Co.

For Deed to  
of Pond

H.L. Epstein

N.E. Richardson

Dec. 6-1943



SW. Cor.  
Lot 1

Youngs Bay Lbr. Co.

Water Filing

E. S. Woodford

N. E. Richardson

C. S. No. 31/25

5+51 Def R. Def L

9+53

6+87<sup>u</sup>

Fence Line North Side Rd.

6+27<sup>l</sup>

South Side Dixonsville Rd.

1+63<sup>e</sup> 45°00'

1+34<sup>u</sup> 45°00'

Hub. 0+20

0+00  
intake

45°00'

34.4  
28.6  

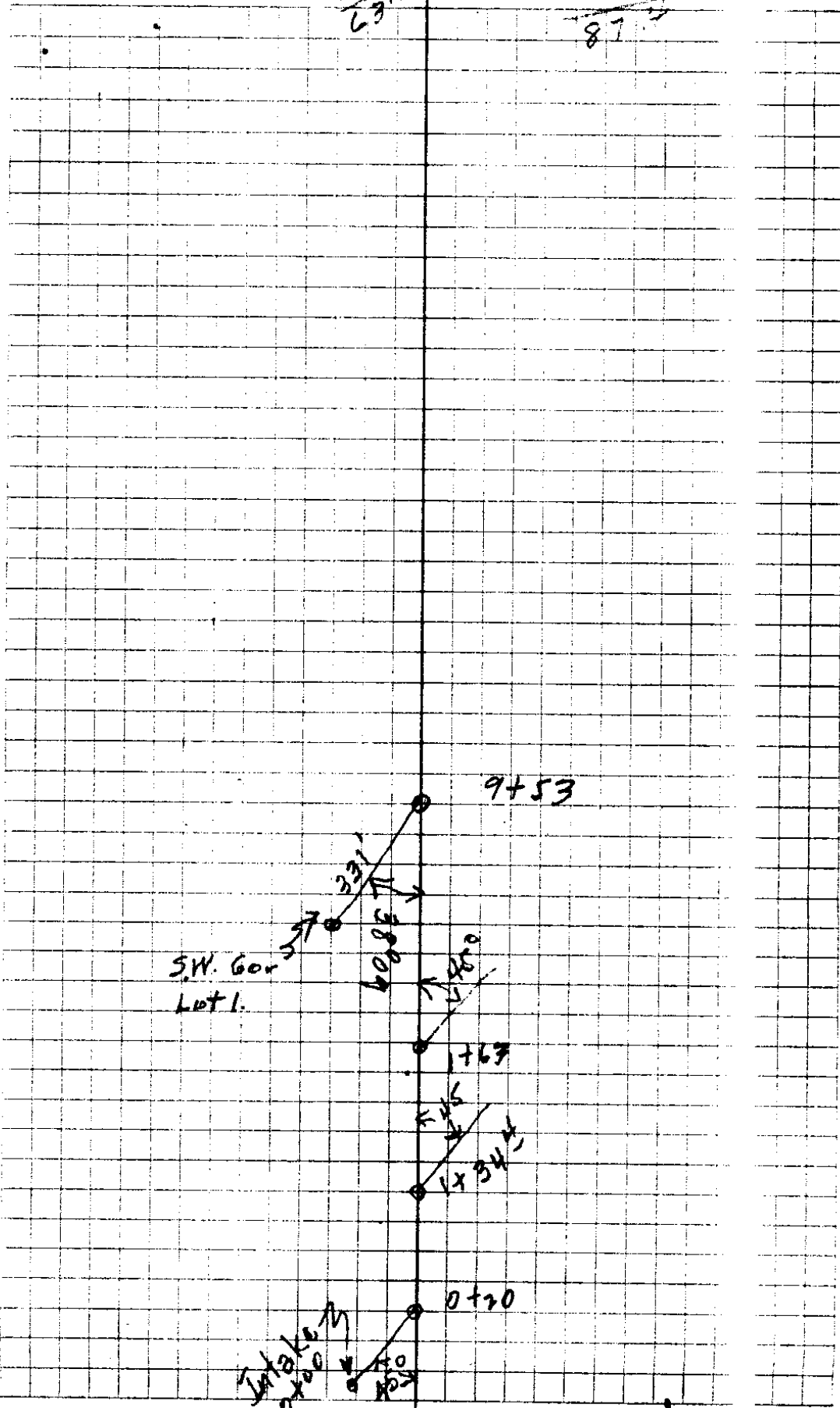
---

63.0

27.7  
59.7  

---

87.4



SW. Corner  
Lot 1.

9+53

1+63

0+20

i. S. File No. 31/25

81-25

Sta

0+07

0+50 105.0 9.75 39.3

1+00 122.5 72.5 18.55 43.0

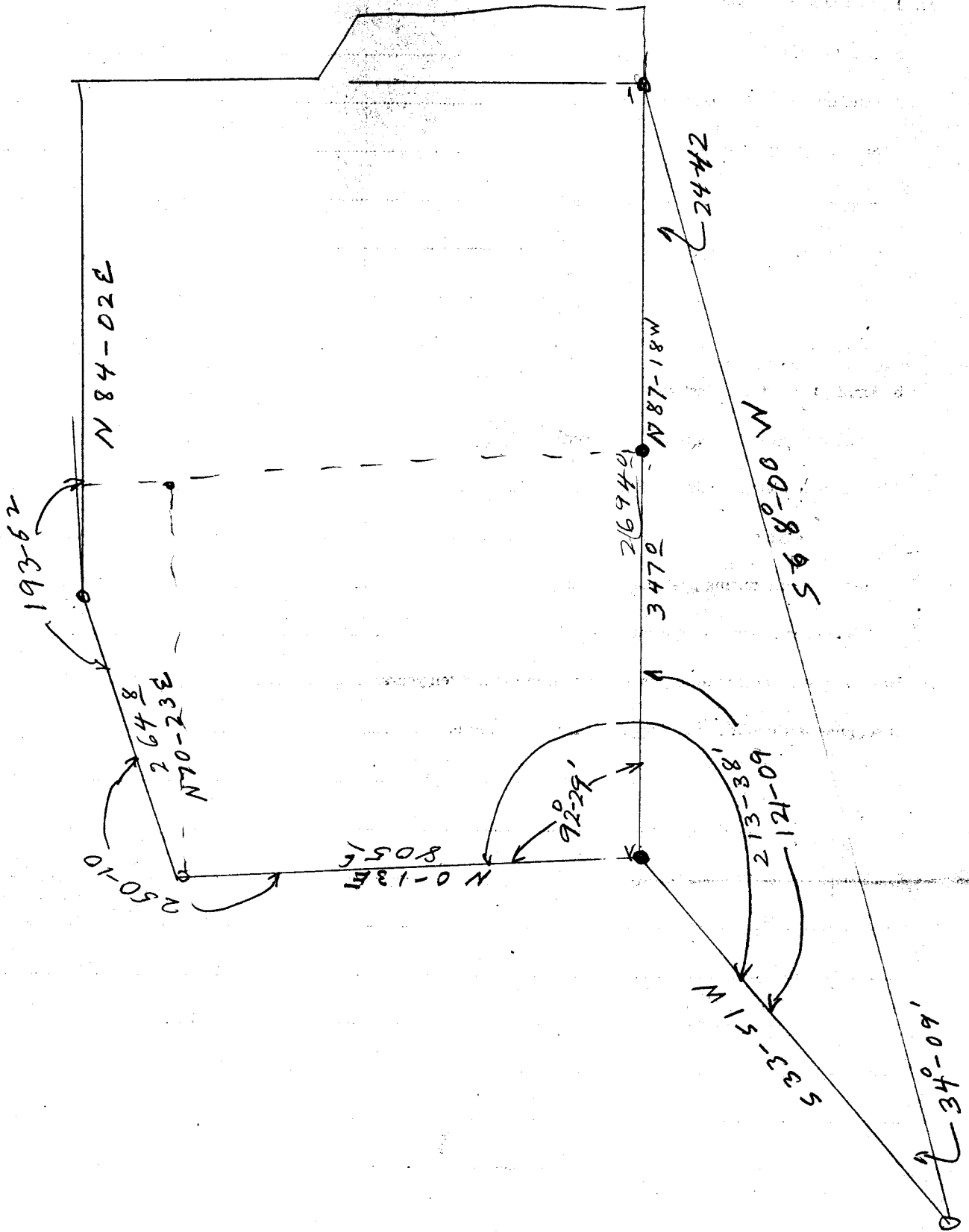
+50 107.5 120.0 25.2 2.5 51.60

2+00 38.0 54.0 102.5 91.65 4.2 18.0 5.4

+50 25.8 32.5 65.0 75.0 17.0 2.9 2.1

3+00 3.0 21.0 50.0 65.0 43.75 1.2 1.8 4.8

+50 3.0 22.5 47.5 69.6 40.8



Description of West  
Part of Mill Pond,  
Young Bay Lumber Co,

Beginning at the South West Corner  
of a mill pond, from which the North  
West Corner of the Thomas Stevens Donation  
Land Claim No 40 in Township 27 South,  
Range 5 West of the Willamette Meridian  
Wheeler County, Oregon, bears  
S 28°-12' W 1685 feet;  
Thence N 0°-13' E 805 feet <sup>along West dyke line</sup> to the North West Corner  
" N 70-23 E 2648 " <sup>along North dyke line</sup>  
" N 84-02 E 946 " " " " "  
" South 926.7 feet through the mill pond  
to the South dyke  
Thence N 87-18 W 3472 feet <sup>along the South</sup>  
dyke line to the place of beginning, containing  
6.927 acres more or less,

December 6, 1943

**DESCRIPTION OF WEST PART OF MILL POND, YOUNG BAY LUMBER COMPANY:**

Beginning at the Southwest corner of a mill pond,  
from which the Northwest corner of the Thomas Stevens Donation Land Claim  
No. 40 in Township 27 South, Range 5, West of the Willamette Meridian,  
Douglas County, Oregon, bears S 28° 12' W. 1685.0 feet;  
Thence N. 0° 13' E. 805.6 feet along West dyke line to Northwest corner  
Thence N. 70° 23' E. 264.8 feet along north dyke line  
Thence N. 84° 02' E. 94.6 feet along North dyke line  
Thence South 926.7 feet through the mill pond to the south dyke  
Thence N. 87° 18' W. 347.0 feet along the south dyke line to the place of  
beginning, containing 6.927 acres more or less.