

T. B. Copeland Sec 3 275

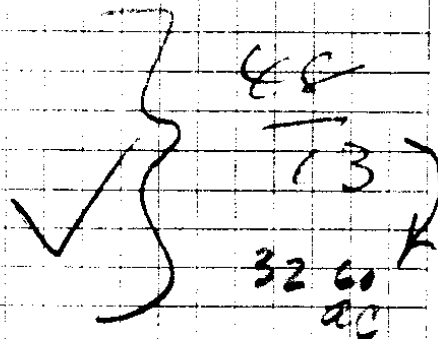
Begin at SW cor Lot 2 Sec 3 25
5

Th. E. 3 chs.

48 N. 6.95 chs.

13 W. 3 chs

13 S. 675 to beg



~~46/389~~ also 48/11

46/391 ✓

44/378 Kirley to H. M. Coppe

Begin at NW cor ^E SW 1/4 Sec 3 Th.

E. 3.47 chs to Co Rd. Th fall ^{THIS IS WRONG IN} _{DEED}
the same to wit S 25° 20' E 3 chs
to cor 8" F. cor

S 10°-15' E 2.8 chs

S 20°-30' E 2.3 chs to 8" F. cor

S 42°-15' E 2.3 chs to 6" Tunnel

S 15°-20' E 3.18 chs. to 6" F. Thence
leaving Co Rd.

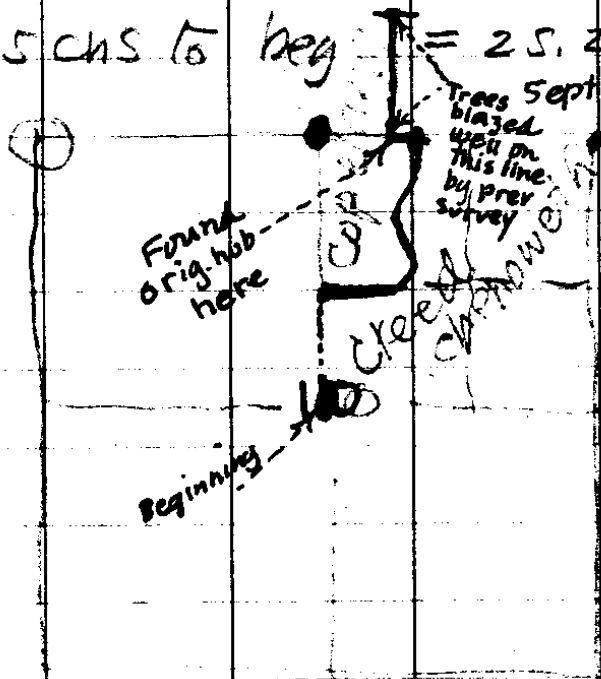
S 11° W 7.77 chs to pt fr wh B.O. 10"
+ MK & B.T. brs S 11° W 73 lks Th

W. 6.32 chs to NW cor. SW 1/4 Sec 4
Th N 1° 40' W 20 chs to beg = 12.6 ac.

31/4

25/5

a 7" W.I.O. mka B.T. brs N. 31 lks. th. North
22.05 chs to beg = 25.2 ac.

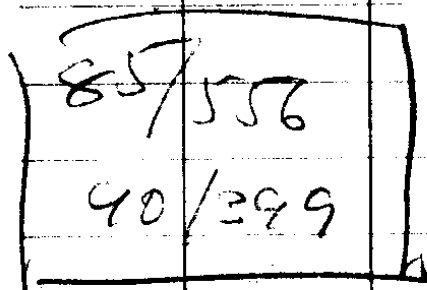


Trees Sept 11, Retraced these lines shown in ink AB.

Arthur Longbrake
Hd chain

24/261

48/13



J. B. Capeland

48/11

Beg at 1/4 Sec 10
bet 3 + 10 T.V. N89 43 E
12.25 chs to a post
from wh. a 24" W.I.O.

marked B.T. brs N70° E 5 1/2 lks. th. following
top of ridge S 5 1/2° W 10.85 chs. to a 48" pin
th S 1 1/2° E 8.85 chs. to an 8" oak, th. S 34 1/2° W
5 chs. to a post from wh. a B.T. mka B.T.
brs. S 59° E 27 lks. th. leading to ridge West
0.72 chs to 1/4 Sec 10 & to a post from wh