

Parkinson 31/1

S 4/6 36
18" F N 16° E 31'
16" F S 47° W 15'

5 1/2 Con 36
Old Oak N 71 1/4° W 56'
14" F N 22° E 39'
12" F S 71 1/2° E 30'
15" F S 63 1/2° W 33'

THURS
July - 23rd

1-6-7-12

6" L N 32° W 30 L
8" L S 73 1/2° W 47 L
8" L S 50° E 20 L OBT
18" F N 65° E 71 R "

Frd 1854

S on W Body sec 6. 29/6

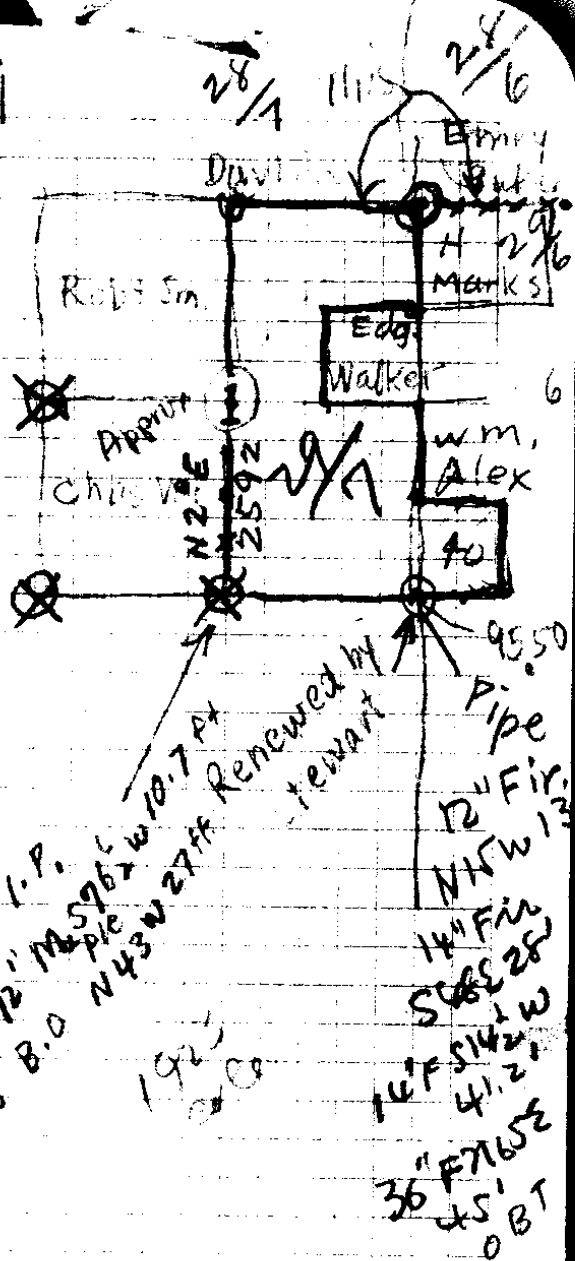
3.5 Creek = C N.W

20 Top R

40 = 4 1/2" = 10" L-N 25° W 450 L
5" B.O. N 15° E 425 L

45.20 = Creek - C-N-E

80 = ca



1. P. L. S 76 1/2° W 10.7 ft
 12" Maple
 8 B.O. N 43° W 27 ft
 1925
 20 Co
 12" Fir
 N 15° W 13
 14" Fir
 S 68° E 25
 14" F S 14 1/2° W
 41.2
 36" F 76° E
 45'
 OBT

856' No Fence

16.5) 856.0 (51.8
825

82.5

310
165
1450
1320
130

JULY 23-42

Tom Parkinson

Vern Dixon

Milt Harris

W. B. Smith

Followed old Orig Survey
Blazes along N. Side NW^{1/4} NW^{1/4}

1325.1 - 5.0 = 1320' East Sec 6
of NW^{1/4} Sec 6

across
draw

E	30.0		
E	300	26°	= 269.7
E	113.4	34°	= 94.0
E	185.0	F	=
E	257.5	16 1/2°	= 246.9
E	111.6	12 1/2°	= 109.1
E	114.5	19 1/2°	= 107.8
E	300	19 1/2°	= 282.6

Sector - NW^{1/4} Sec 6

