

E Line County Road

N 0° 37' W 116''

N 0° 37' W 256''

9-16 SPACES

ALLEYS

6-16 SPACES

ALLEYS

8-18 SPACES + 7-8 SPACES

N 89° 23' E 228''

S 89° 23' W 228''

S 0° 37' E 256''

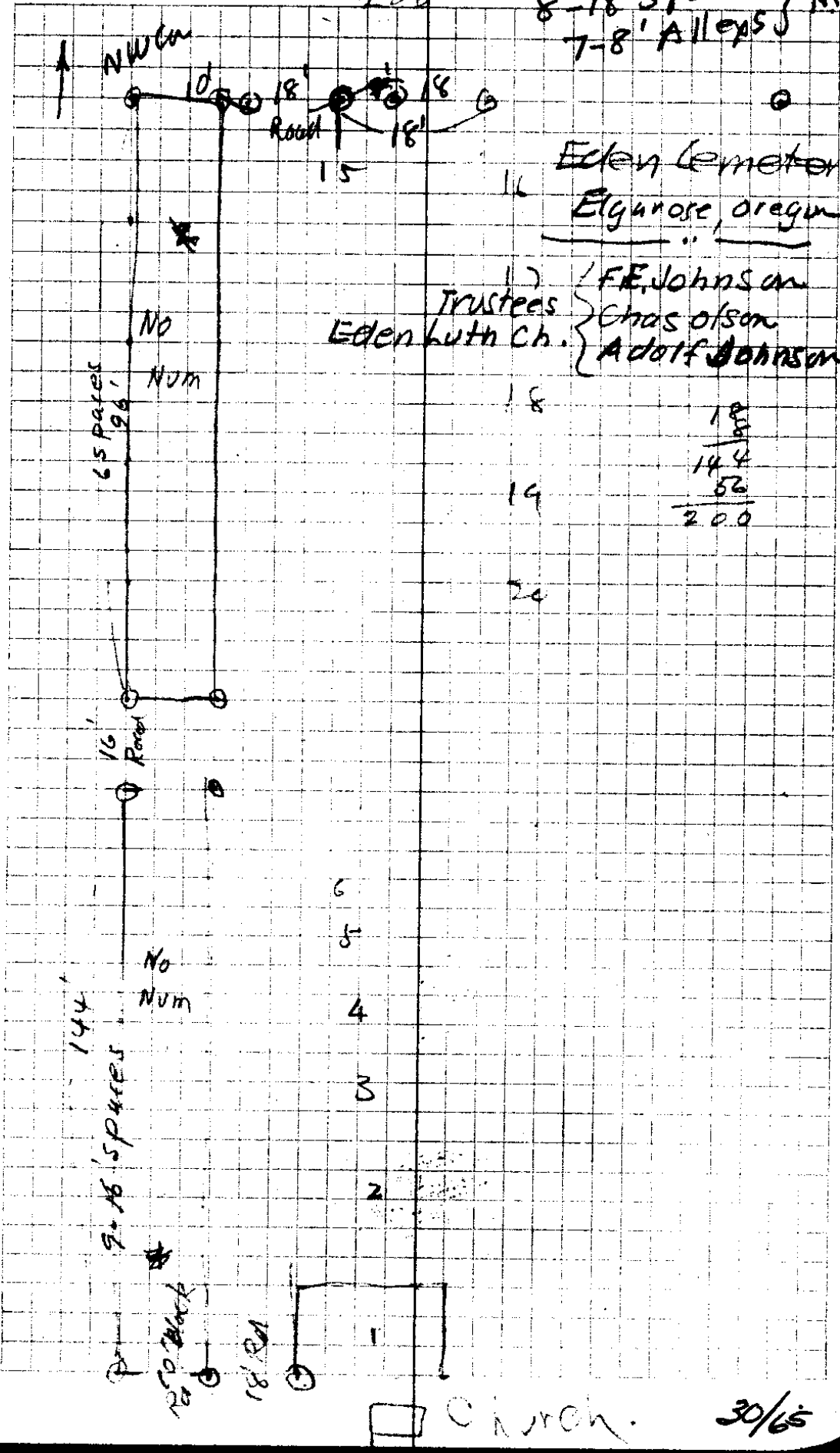
All 8' spaces are 21 ft. x 8'

Eden Cemetery

144
56
200

30-65

8-18' Spaces } Run
7-8' Alleys } NTS.



Eden Cemetery
Elginore, Oregon

Trustees }
Eden Luth Ch. } F.E. Johnson
 } Chas Olson
 } Adolf Johnson

65 spaces
96'

No
NUM

18

18
56
144
56
200

14

20

144'

9-16' SPACES

No
NUM

6

5

4

3

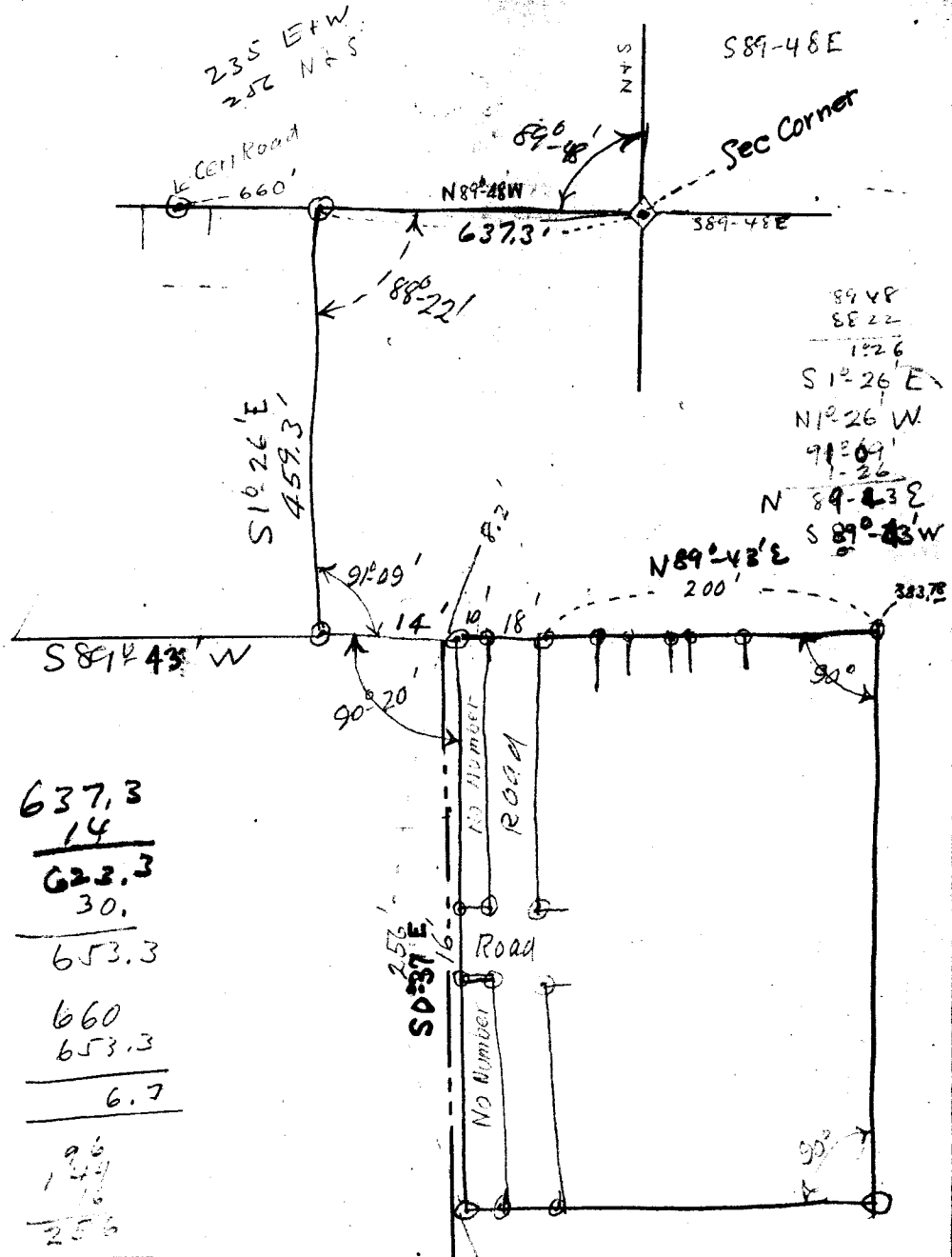
2

18' Block

18' RA

Church.

30/65



637.3
14
 623.3
30.
 653.3

 660
653.3
6.7

 96
144
16
256

90-08
89-43
37

S0°37'E
90
90-37'
180 60
 N 89 23 E

240
28
14
242

189
162
56
10
228

S40°07'W
 595.8'

Eden Cemetery

June - 1930

30/65