
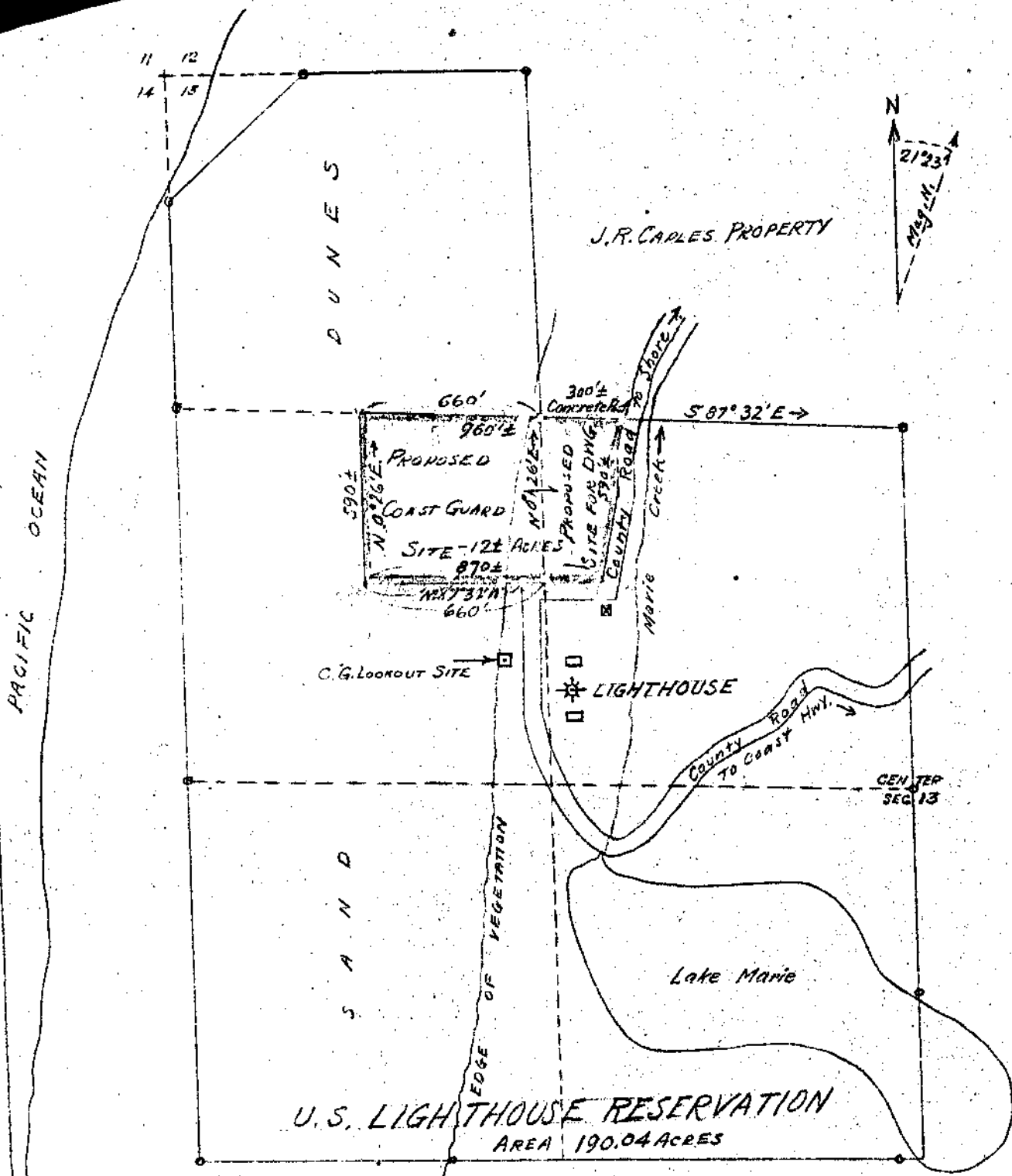


NOTES
 Drawn from contour map made by Corps
 of Engineers, U.S.A., Sept. 1890 and
 Douglas County Road map, March 1929.
 Elevations refer to bench marks
 established by Oregon State Highway
 Department on the Coast Highway.

 DESIGNED DRAWN TRACED CHECKED NO. 321384 DATE APR. 6, 1938	U.S. COAST GUARD OFFICE OF DIVISION CIVIL ENGINEER, SEATTLE, WASH.
	UMPQUA RIVER STATION
	PLOT PLAN
	13TH DISTRICT - OREGON
	SCALE 1" = 30'



U.S. COAST GUARD
 OFFICE OF DIVISION CIVIL ENGINEER
 SEATTLE DIVISION
 UMPQUA RIVER STATION
 Site for Station Buildings
 Scale as Shown. Drawn by W.S. 9 Mar 1938

Drawn from photostat of map of Umpqua R. Lt. Sta. dated Oct. 1931.

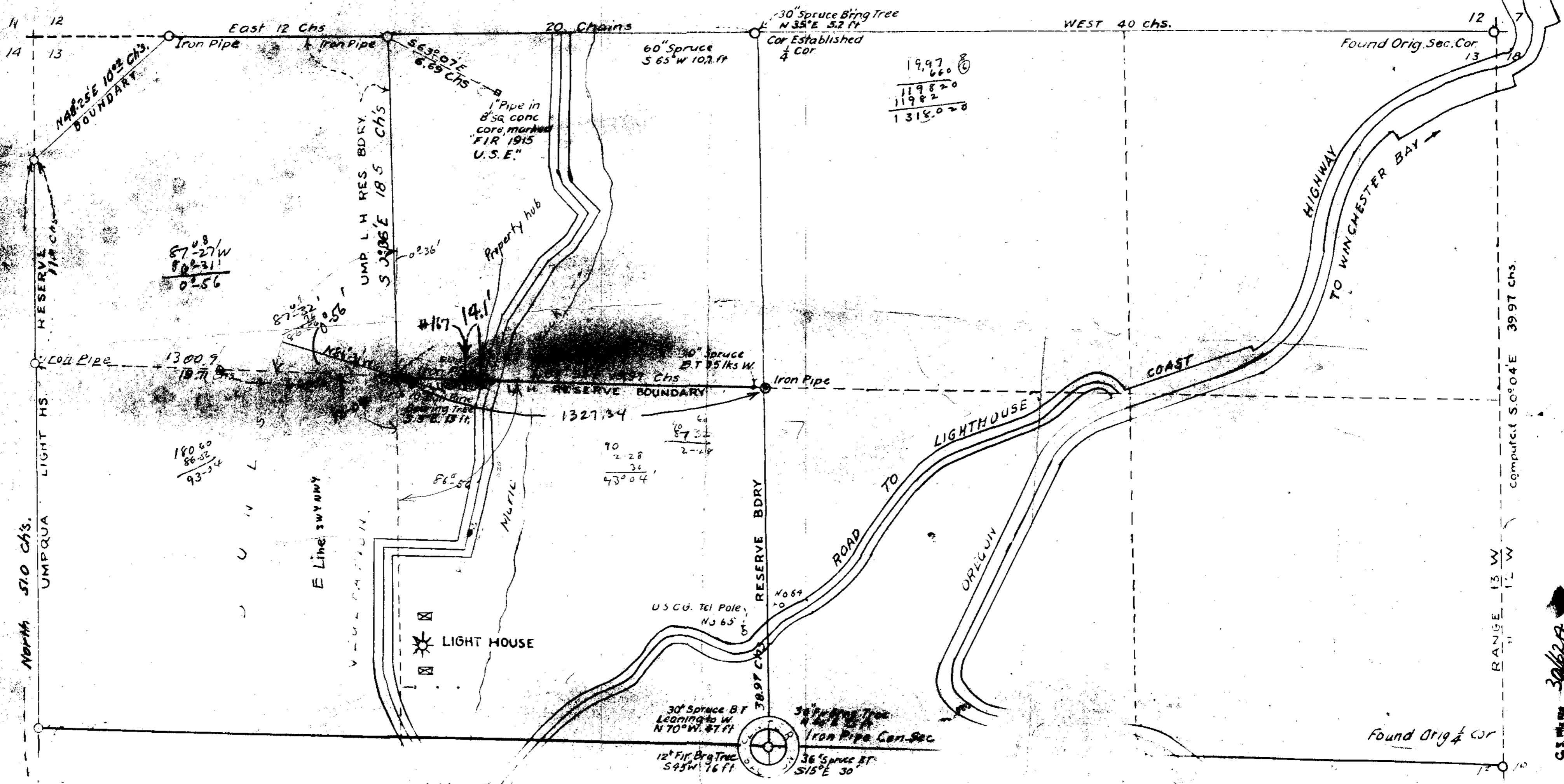
92
 87-82
 0-36
 86-56
 180 60
 86-52
 98-04

11826
 11826
 130086

1997
 11982
 11982
 1318020

466
 2766

180 60
 86-52
 92-28
 36



C.S. No. 3062A

600
7.7
692.3

940
6-
73-04
58

9699
3
29097
328.8
619.77

660
619.8
41.2

90 60
67-22
22° 38'
Tan H: 20
4169
20
83380

N 17°-15' E

S 17°-15' E

69-30

S 86° 45' W

5-43

92-28

180 60

N 87°-32' W

95.6

80.

175.6

328.8

291.

41.2

661.0

$\cos A = \frac{a}{c}$

$\frac{a}{c} = \cos A$

$c = \frac{a}{\cos A}$

92299) 20

92299) 200000(21.6

184598

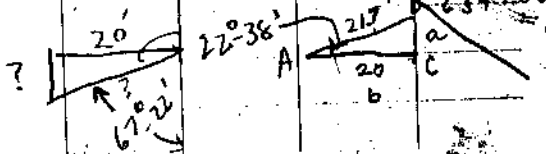
154020

92299

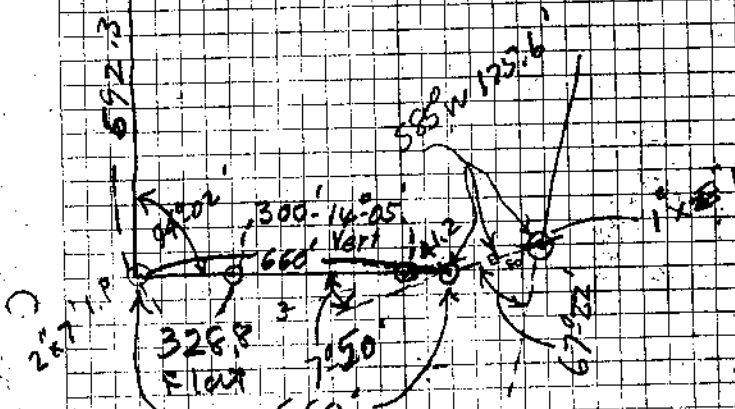
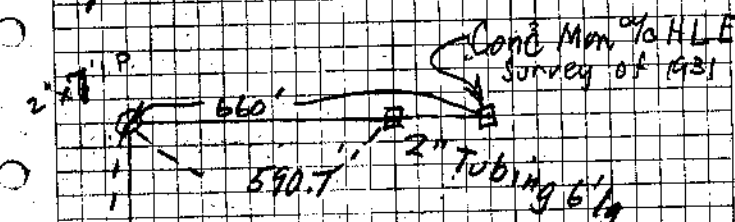
617210

553794

634160

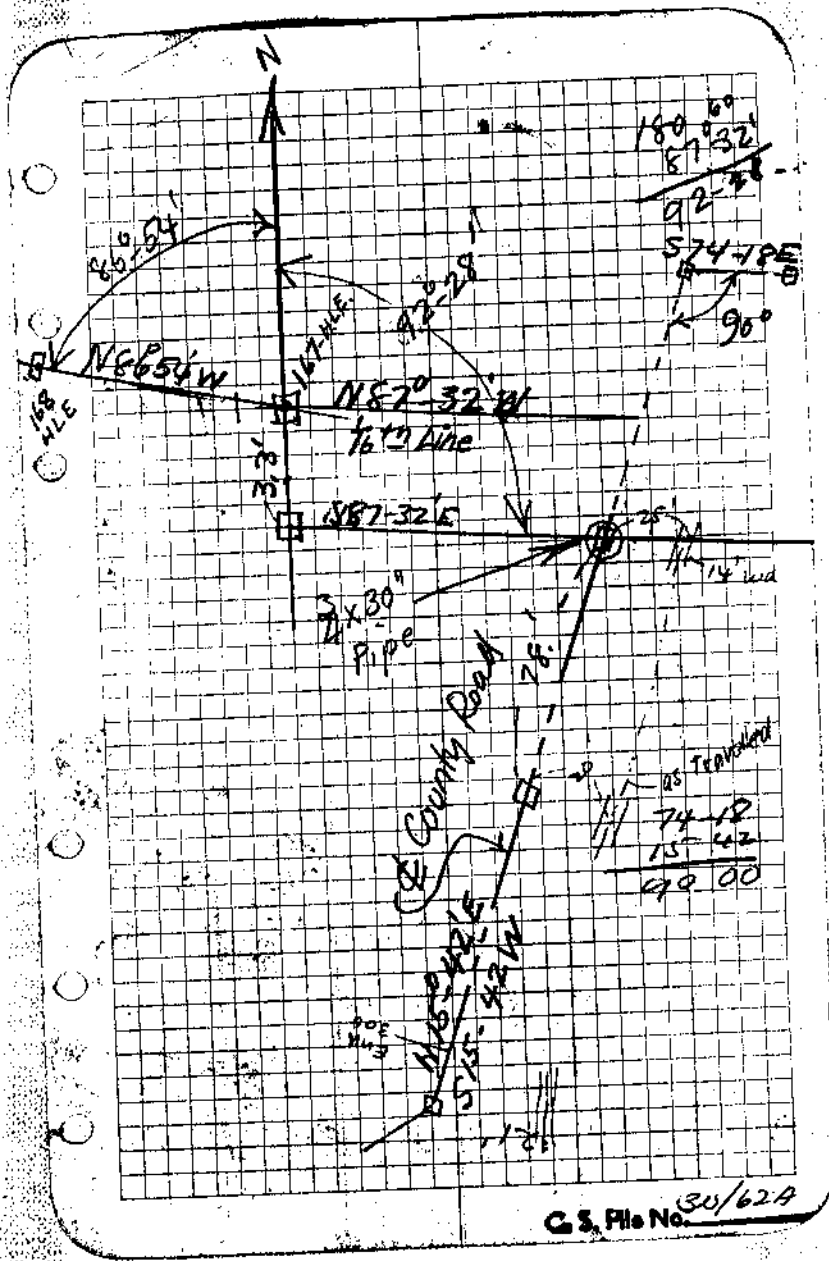


660
893
1907

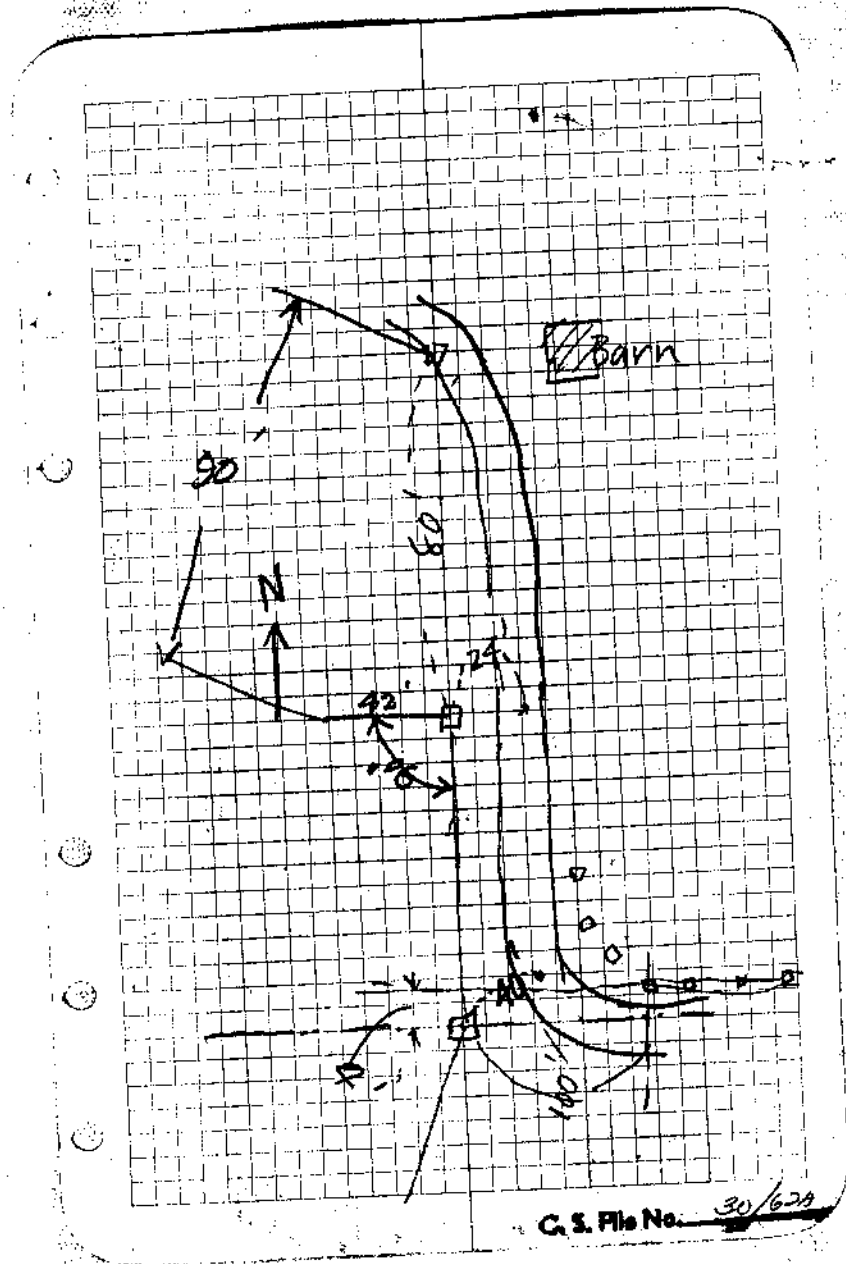


Set hub 5.20' E of SW Cor - set 1" Steering Rod 5' long

C.S. File No. 30/62A



C.S. File No. 30/62A



Peg Levels to Establish Bench Marks				
Sta	+S	H	-S	Elev
Fourchy B.M.	6.21	23.16		16.95
			0.06	23.10
	10.48	33.68		
			0.29	33.29
	11.74	45.03		
			1.06	43.97
	7.32	51.29		
B.M. by } set by Cain			3.88	47.41
F. Cain } 90' B.A. Line				43.53
			0.13	51.76
	11.67	62.83		
			0.14	62.49
	11.79	74.48		
			0.39	74.09
	11.90	85.99		
			0.04	85.95
	11.78	97.73		
			0.11	97.42
	10.41	108.03		
B.M.			5.38	102.65
				Spike 10" Sp. E Side Rd Opp. N. End 300' Base Line
			0.24	107.79
	11.97	119.76		
8d Nail NE Cor Barn			0.74	119.02 = 115.14 Cain

11.67	
3.88	
15.42	
<p>This is "BM #6" on Root 10" Spruce 2 Sta 55 to 5 Marked BM #6 "etc" Notes by F. Cain - 1929. Found this B.M. AS - 1938</p>	
102.65 = 69	
3.88 =	
98.77 = Cain	
119.02	
3.88	
115.14	
<p>C.S. File No. <u>30/624</u></p>	

C.S. File 30/62

This file also contains:

Letters between the Surveyor's Office and the US Coast Guard concerning the Surveyor's Office doing a survey for them & the payment of the survey.

Computations of survey.

ALSO

The scanned maps **DO NOT** show the red pencil lines that the orig. shows.