

Sept 3-1937

J A Ferris

A Boyer

Wm Myers

945
297

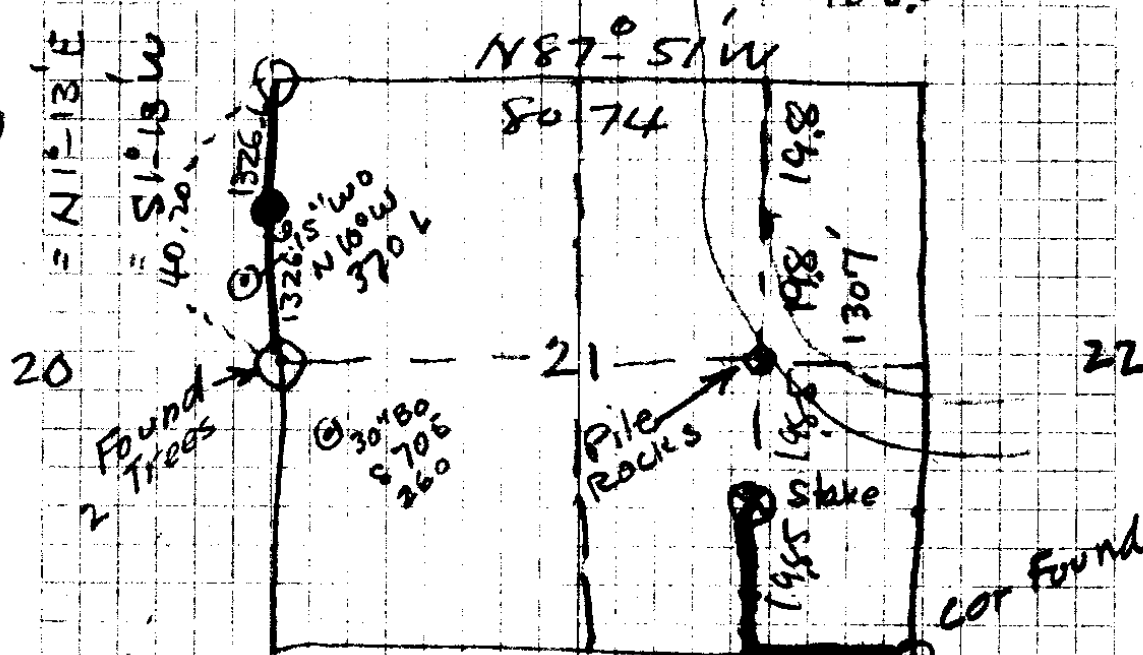
696.5
8950.5
19890
295,366

9881
140
395240
4491
138,3840

17
19

17

16



20

21

22

172
107.6
108.1
121.7

5094
140
928
212.5
295.3
128
379.0
938
1285.2

138.3
212.5
295.3
128.0
774.1
509.4
1283.5

1307
1283
230
1307
1283
230

1085
996
6570
9765
9765
1080660
438
951
128
7608
1902
951
121,728

30/49

Sta 940.7
9

N

294.5	on $11^{\circ} 00'$	0.981	286.9
139.7	on $2^{\circ} 30'$	0.976	136.3
22.6			22.6

295.7	on $18^{\circ} 10'$		280.9
82.4	F		82.4

N 275.0 on 9° 271.7

N 247.0 on $13\frac{1}{2}^{\circ}$ 240.0

N 69.0 on $17^{\circ} 45'$ 65.7

W $\frac{1}{4}$ Cor 21

Sept 3-1937

65.7
240.0
271.7
82.4

659.8 ✓ 1
280.9 1 2
940.7 2
226 1
136.3 4
288.9 (7)

1388.5
1826.
62.5

⁶⁶
370
4220
198
244.20

300
244
56

.952
69 (6)
8568
5712

65,688

988 7
275 8

4940
6916
1976
271700

295.7 5
950 (7)
147850
26613

280.915 0
2945 2
981

2945
23560
26505
2889045

⁶⁶
360
3960
132
17160

300
1715
128.4

.972
247

6804
3888
1944

240084

20.10 3
66
12060
12060.

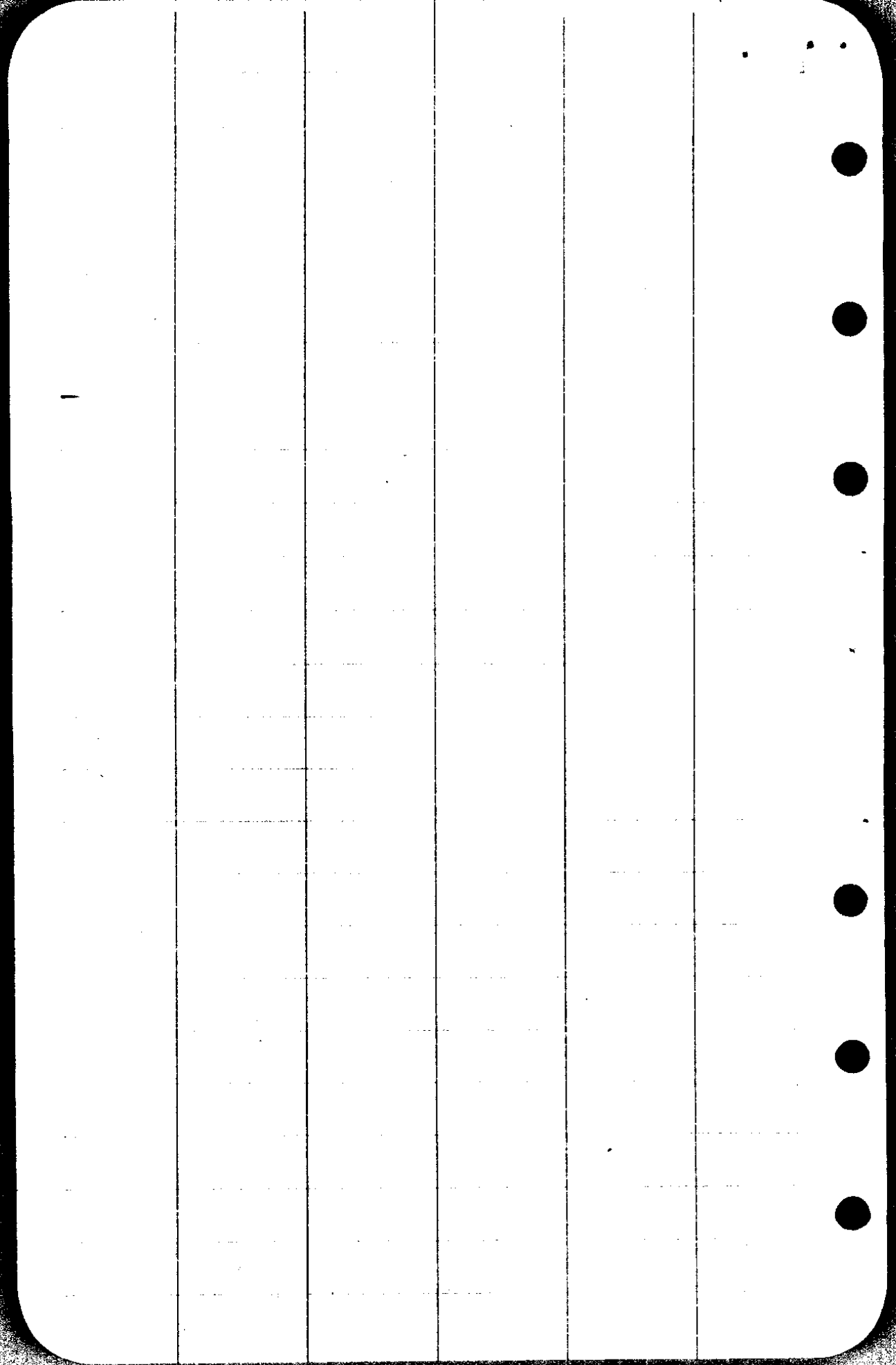
132660 (7)

139.7 2
.976 (8)

8382
9779
12573

1363472

30/49



Sept 2-1937

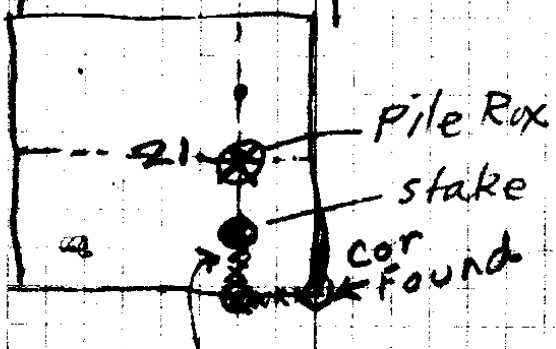
AB.

Mr Fe. 111
Jos Myers

9914
 221.7
 64398
 9914
 14828
 19828
 219,793 38
 9367
 1857
 65569
 46835
 74936
 9367
 173945 19
 110

9628
 184.2
 19256
 38512
 79024
 9628
 17734776
 9239
 131.8
 73912
 9239
 27717
 9239
 12177002

986
 295
 4930
 5874
 1973
 290,870
 9816
 1064
 39264
 58896
 9816
 10444224
 22410
 251.8
 154.5
 222.4
 290.9
 298.
 1217.6
 1320
 1218
 102
 110
 140
 162.7
 134
 210
 179
 845.7
 144.5
 990.2
 156.2
 1146.4
 1310
 1142
 164



5 140 116
 1 145 100
 104.4 162.7
 3 121.8 134
 173.9 210
 177.3 144.5
 2 219.8 152.2
 3 221.7 146.4
 1303.9
 1310
 1304
 06.

1310
 11464
 163.6

1520
 850
 339
 1562
 183

251.8 7
 154.5 6
 222.4 1
 290.9 2
 298. 1
 1217.6
 1320
 1218
 102
 110
 140
 162.7
 134
 210
 179
 845.7
 144.5
 990.2
 156.2
 1146.4
 1310
 1142
 164

30/49

172	1	
107.6	5	1307
108.1	1	1283.5
121.7	2	<u>23.5</u>
138.3	6	
212.5	1	
295.3	1	
128.0	2	①
<u>1283.5</u>		

90
87.51

1307
1283.5
23.5

~~N 295.7 on 18° 10'~~

N 128.0

N 297.0 - 6° 00' = 295.3

N 212.5

Pt Δ = 90° R

W 93.8'

Pt Δ = 90° L

N 140.0 on 8° 50' = 138.3

N 128.0 on 18° = 121.7

N 108.5 on 5° = 108.1

N 107.6

N 172.0

1/16 cor

T30S R4W

Cor 21, 22, 27, 28

Reset 1889 Trees in 22, 27, 28 OK 1889

Re MKU { 36" Fir N 75° E (48) Lks. = 21.5'
 12" Laurel S 48° E (67) Lks 44.2' ✓
 12" Cedar S 75° W (44) Lks 29.0' ✓
 12" Fir N 80° W 67 Lks 44.2'
 6" " N 88° W 37.0'

NE Cor Sec 21

14" B.O. N 42½ E 60 } orig 87s
 10" W.O. S 30 E 18 }
 27" B.O. S 74 W 8.7 }
 12" B.O. N 10 W 5.3 }

Th. S. 1° 39' W 39.40 = ¼ Cor bet 21 + 22

Set Stone 20x8x8

30" Maple S 20 E 260 Lks
 24" Balm S 33½ W 248

Th. S 2° W on tr line bet 21 + 22

Cor 16, 17, 20, 21

1889

16" B.O. - N 60° W 13 Lks - orig 87 ✓
 14" Fir N 20° E 10 " ✓
 18" " S 47½ E 19 " ✓
 6" B.O. S 73 W 11 "

S 1° 13' W on tr. line bet 20 + 21

40.20 = ¼ Cor Post { 30" B.O. S 70 E 260 L.
 { 15" W.O. N 10° W 370 L.

Th S 1° 22' W 38.90 to Cor

¼ Cor bet 16 + 21

1.30

10" Fir N 12° E 19 Lks
 12" " S 66 W 16 "

30/49

13+03.9

sec 21

T 30-4W

221.7 F

119.5 on 7.0 ^{0.9628} 30 = 219.8

184.2 on 15.0 ^{0.9367} 40 = 177.3

185.7 on 20.0 ^{0.9239} 40 = 173.9

131.8 on 22.0 ^{0.9239} 40 = 121.8

106.4 on 16.0 ^{0.9239} 40 = 104.4

N 145

N 140

1310 = 4' W ⁴⁰ cor H 0.6

163.6

156.2

N 144.5

8+45.7

N 129.0

N 210.0

N 134.0

N 162.7

N 100.0^F

N 110.0^F

1320 = 4' W Gate Post

12+17.6

F 298

W 295.0 ^{0.986} 9.30' = 290.9

W 230 on 14.45 ^{0.967} = 222.4

W 154.5

W 251.8

✓
cor