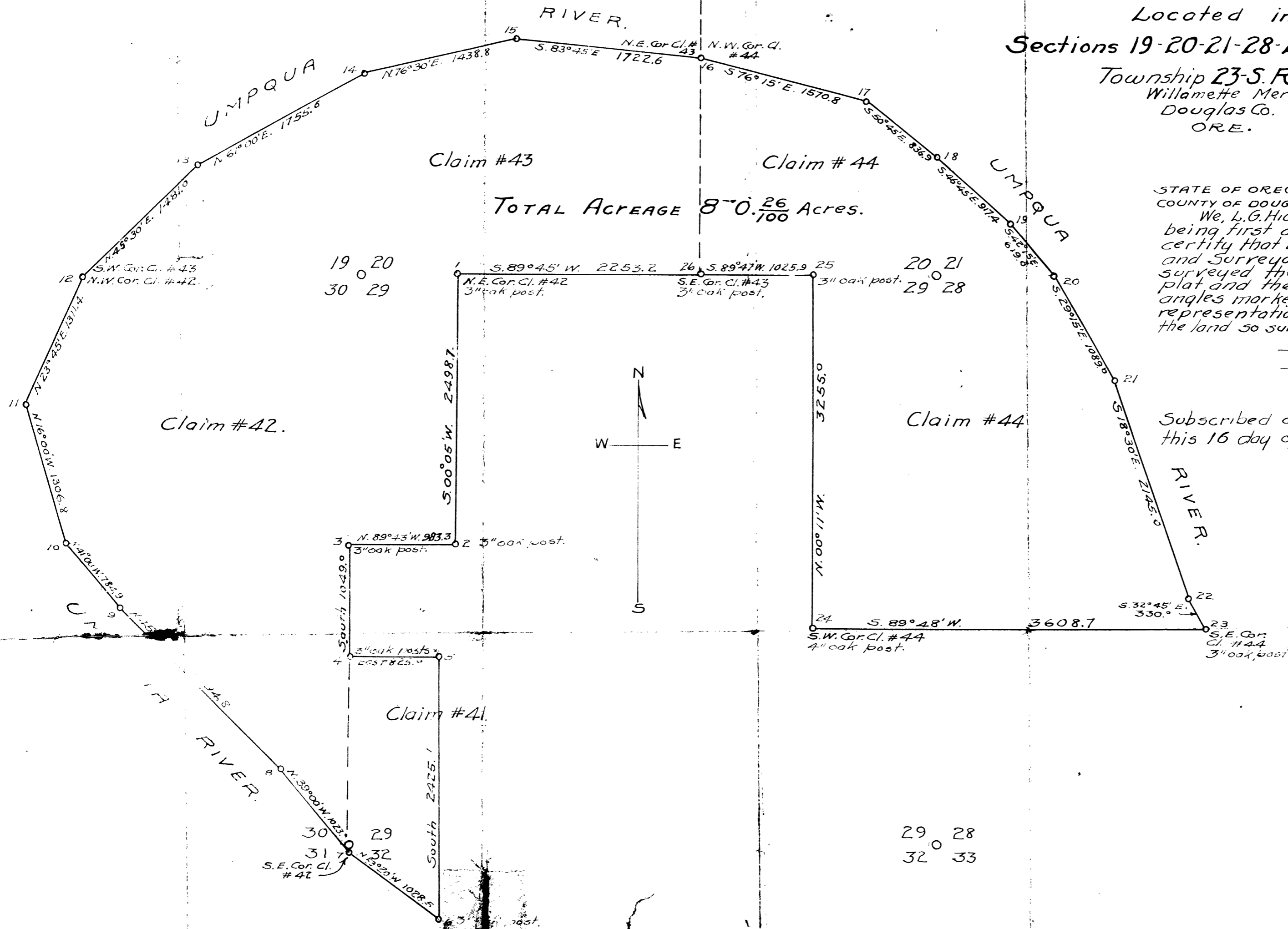


PLAT OF THE "ENGLEWOOD RANCH"

Located in
Sections 19-20-21-28-29-30-31 & 32.

Township 23-S-R-7-W
Willamette Mer.
Douglas Co.
ORE.



TOTAL ACREAGE $80 \frac{26}{100}$ Acres.

STATE OF OREGON
COUNTY OF DOUGLAS
We, L.G. Hicks and Ralph Worstell
being first duly sworn on oath,
certify that we are Civil Engineers
and Surveyors; that We have
surveyed the land and that the
plat and the distances and the
angles marked hereon are a true
representation of such survey and
the land so surveyed.

L. G. Hicks
DEPUTY COUNTY SURVEYOR
Ralph Worstell

Subscribed and sworn to before me
this 16 day of September, A.D. 1911.

Notary Public for Oregon.

Wm Robertson DLC 42 - 723-70

Beg at SE Cor on R. Bank Umpqua R. Sec 31,

fr. wh.

12" Ash-brs N77°W no distance
9" " " S30°E

Th. N39°W 15.5 chs

N45°W 32. "

N41°W 11.69 "

N16°W 19.80 "

N23°45'E 19.5" to NW Cor which is meander post
bet. 19+30, + SW Cor Cl. 43, fr. wh.
15" willow brs N45°W 17ks
36" oak " S15°E 2.55"

East, on N. Line

39.28 Sec Cor 19, 20, 29, 30.

52.40 = Part = NE Cor

fr. wh.

9" oak brs S48°W 25 lks

12" " S75°E 21 "

15" " N45°E 16 "

NW Cor Cl. 41

South on E Line

37.75 = SE Cor Post fr. wh.

18" oak brs N48°E 118 L.

18" " " N52°W 114 "

West on N. Line

13.47 = 1/2 post bet 29+30 is S. 216 LKS.

14.87 = Interior Cor. fr. wh.

24" Oak. N25°E 39 L.

20" " S45°E 19.7 "

South on Line

Stake at SE Cor Sec 30 could not be found

43.25 = Beginning

Jno J. Kellogg Cl. 41

Beg at NW Cor on Line bet Sec 20+29

South 37.75 = Part = Int Cor fr. wh.

18" oak N45°E 118 L.

18" N52°W 114 L.

West 13.47 = 1/2 cor bet 29+30 brs S 216 LKS

14.87 = Part for cor fr. wh.

24" oak brs N25°E 39 L.

20" S45°E 19.7 L.

South on Line

Cor Secs 29, 30, 31, 32 could not be found

43.25 = R Bank Umpqua Set post

for SW cor. fr. which

12" Ash brs N77°W 66 lks

9" S30°E 104 "

Thence follow meanders up stream

Thence N bet 31+32

cross River

78° Set post for frac bet 31+32 on N. Side River

from wh.

8" Ash brs S60°W 60 L.

36" Broken Maple S48°E 95 L

74° Military RA

80 Set post for 29, 30, 31, 32

36" Maple S150°E 274 L

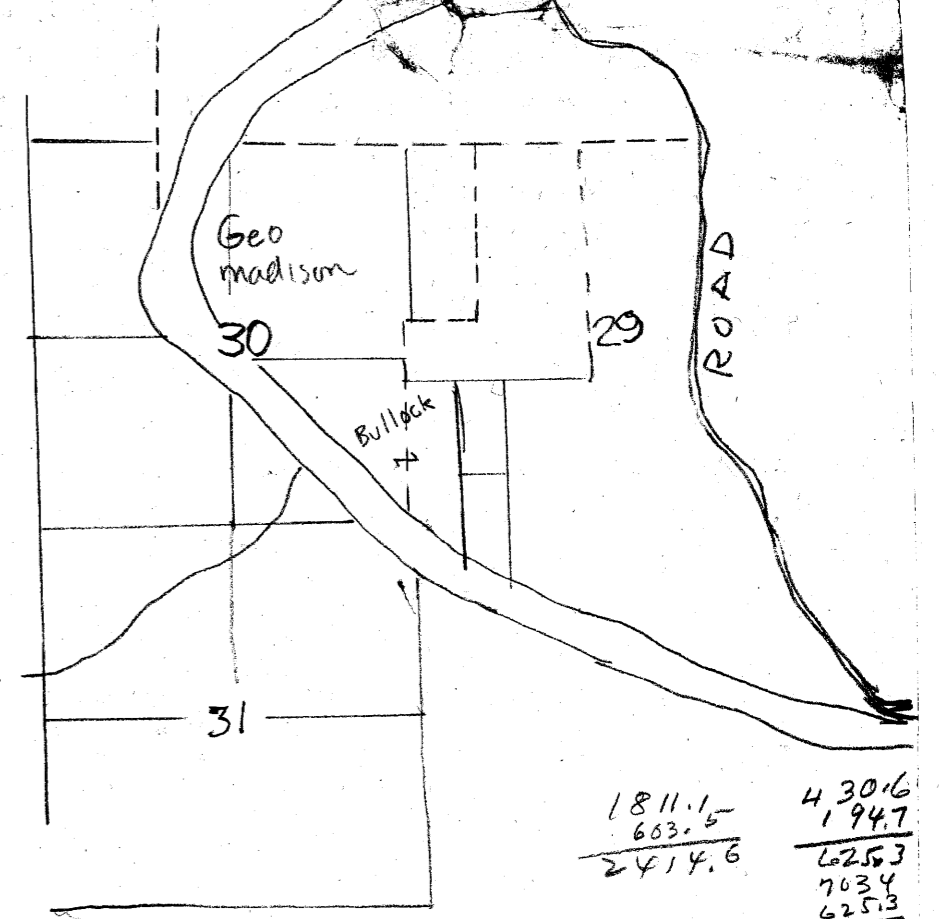
8" Ash S12 1/2 W 236 L

6" Willow N E 7/2 W 297 L

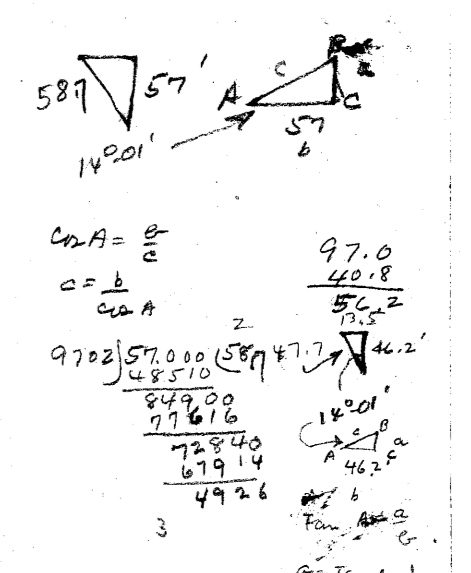
The SE Cor. Robertsons Claim brs N60°W 30 lks from

Meander Post on R. or N. Bank river bet Secs 31+32

DLC 42
23/17



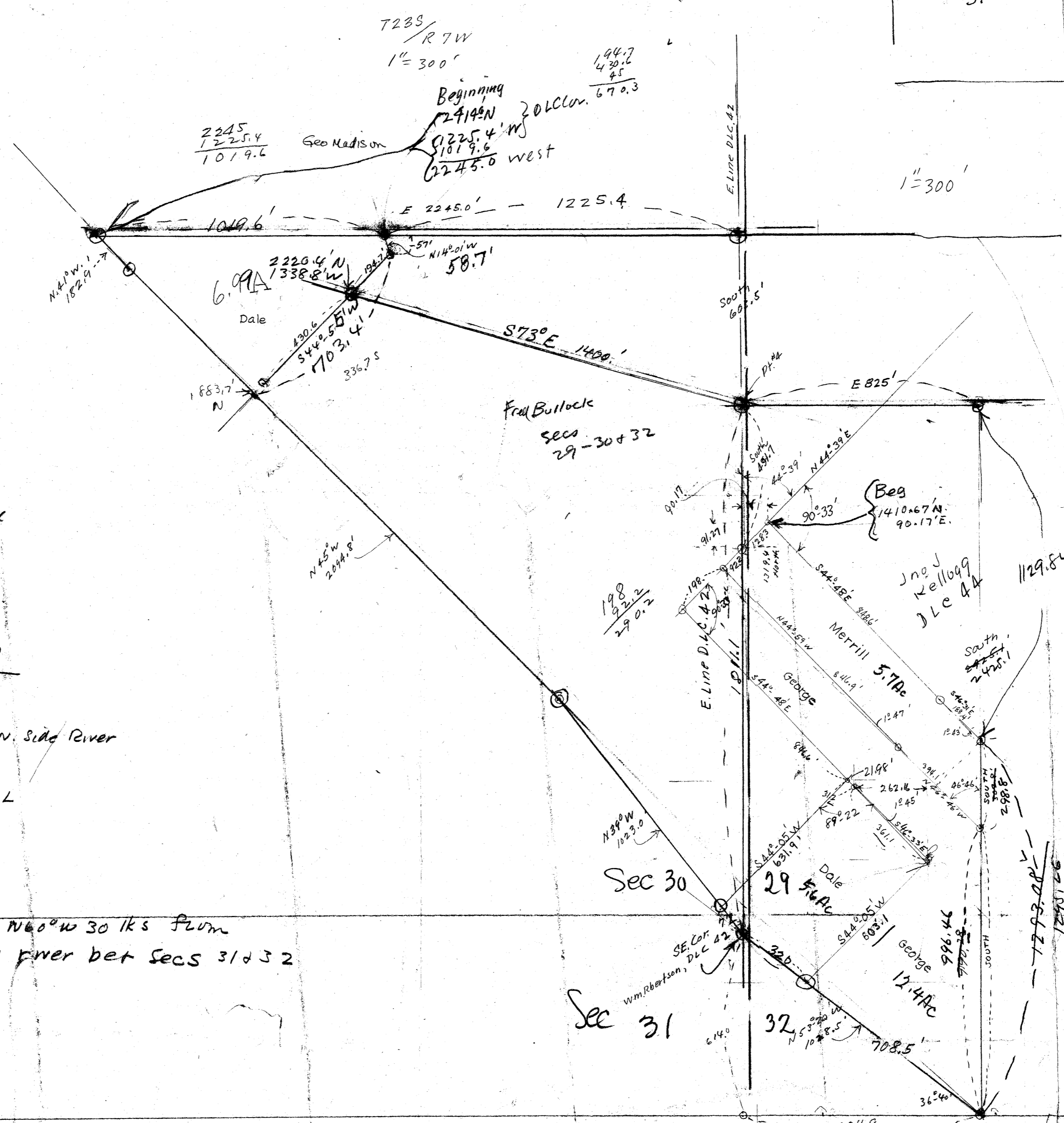
Arithmetic calculations: 1811.1, 430.6, 663.5, 2414.6, 194.7, 625.3, 703.4, 625.3, 78.1



Arithmetic calculations: 1811.1, 491.7, 1319.4, 11.96, 1350.36, 125.3, 92.2, 145, 418.5, 970.4620, 7100, 6990, 2425.1, 603.5, 3028.6, 2425.1, 1811.1, 1811.1, 602.5, 2414.6, 2414.6, 4.02

Arithmetic calculations: 846.6, 462, 135, 31.2, 462, 135, 897.8, 924, 675, 1848, 405, 2134.4, 135, 182.25, 182.25, 2316.69, 481.3, 16, 716, 88, 304, 126.9, 461, 30800, 462

Arithmetic calculations: 1293.08, 461, 302.8, 336.7, 990.28, 432.5, 990.28, 461, 970.4620, 474, 7100, 6990, 2425.1, 603.5, 3028.6, 2425.1, 1811.1, 1811.1, 602.5, 2414.6, 2414.6, 4.02



Metsker Pg 76

Arithmetic calculations: 6957, 603.1, 6457, 20871, 41742, 41957667

Arithmetic calculations: 194.7, 430.6, 625.3, 740, 625.3, 15, 621.680, 548.84, 2.327

Arithmetic calculations: 777.0, 6292, 50344.0, 1.88, 250.34, 203.22, 252.82

Arithmetic calculations: 703.67, 2-326, 450.41, 48, 481.44, 50.34, 724.71, 1.62, 726.59, 384.14, 442.41

Arithmetic calculations: 708.5, 5972, 1477.0, 6359.5, 3542.5, 42451620

Arithmetic calculations: 2425.10, 1245.26, 1129.84, 102.85, 320, 708.5

Arithmetic calculations: 146.6, 31.2, 87.78, 148, 92.2, 290.2, 846.6, 31.2, 877.8

Arithmetic calculations: 18.1, 127, 140.37, 10285, 567, 10285, 7193, 485.0, 325.0, 512.5, 1401.4

Arithmetic calculations: 36240, 302.8, 990.28, 461, 37, 336.7, 432.5, 461, 37, 336.7, 432.5, 970.4620, 474, 7100, 6990, 2425.1, 603.5, 3028.6, 2425.1, 1811.1, 1811.1, 602.5, 2414.6, 2414.6, 4.02

Arithmetic calculations: 996.46, 295.6, 1295.26, 146.6, 31.2, 87.78, 148, 92.2, 290.2, 846.6, 31.2, 877.8

Arithmetic calculations: 10285, 567, 10285, 7193, 485.0, 325.0, 512.5, 1401.4

Bulllock Fred

Apr 22, 1937

ABoyer

A = Dale

B = Merrill

C = Geo

D = Dale

N
W Line
TRACT
LB
7FD

South

4940 - 2.3' = 491.7

P.O.L.

PT #4

299.6
169

130.6

300

430.6

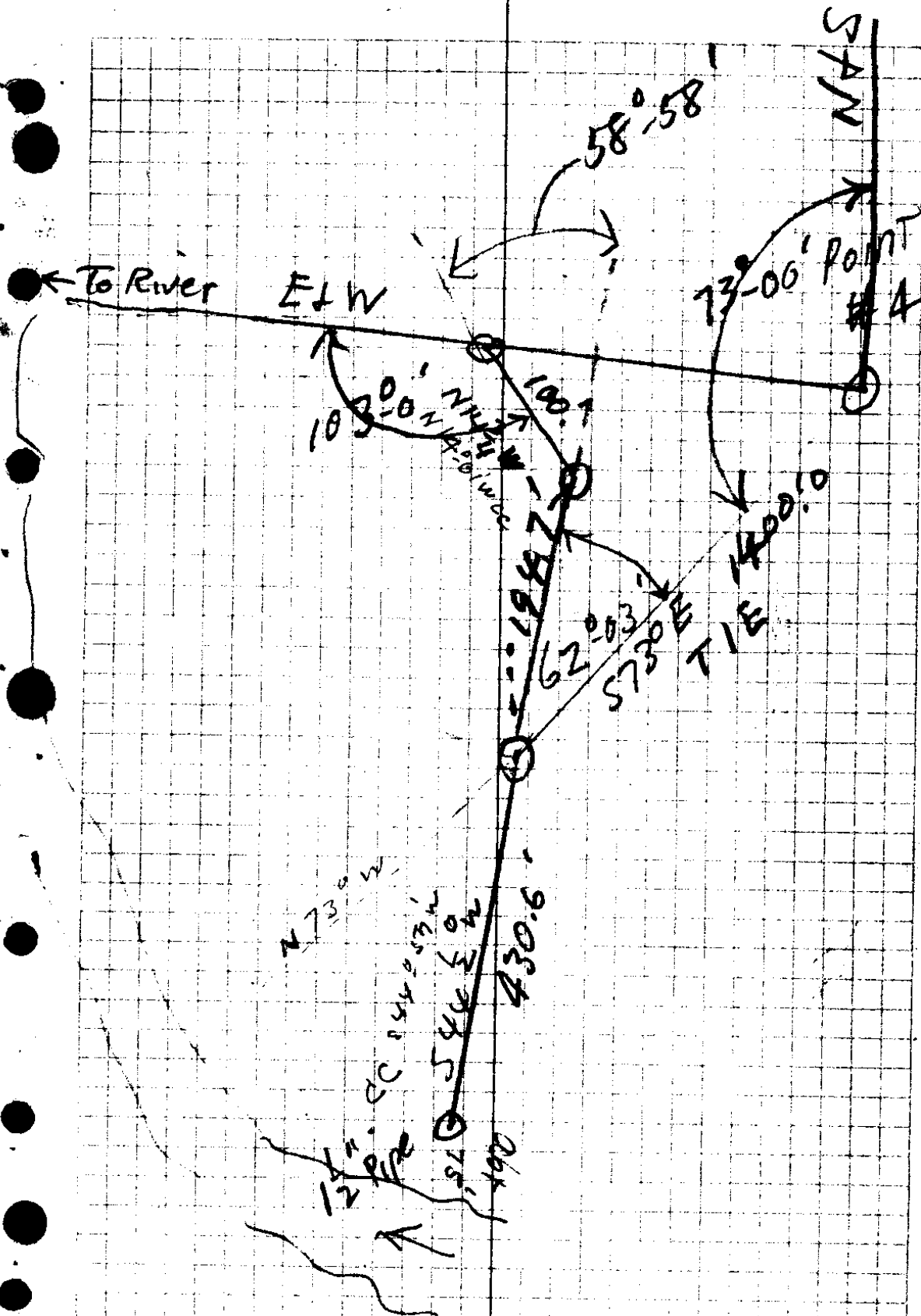
194.7

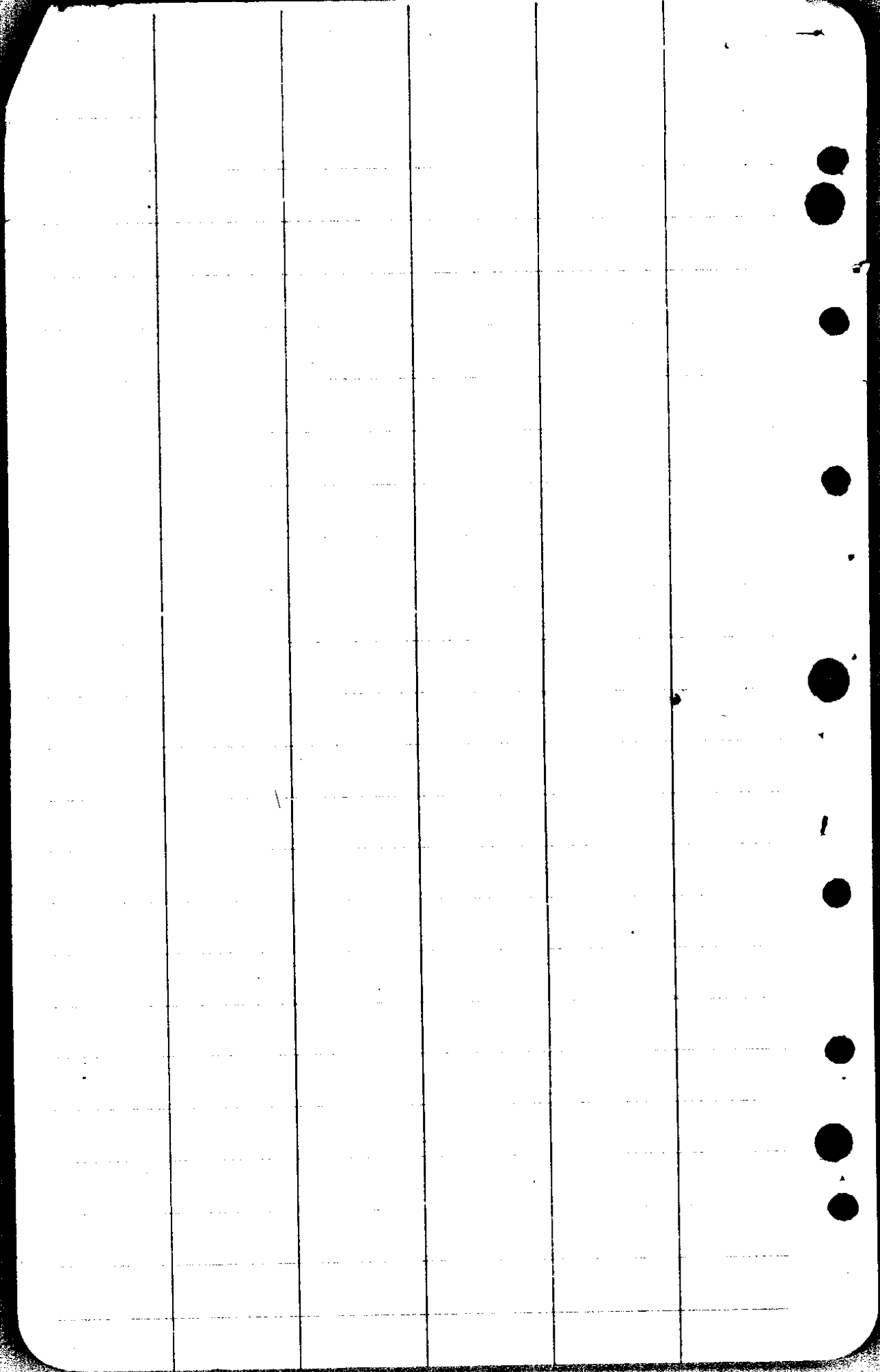
635.3

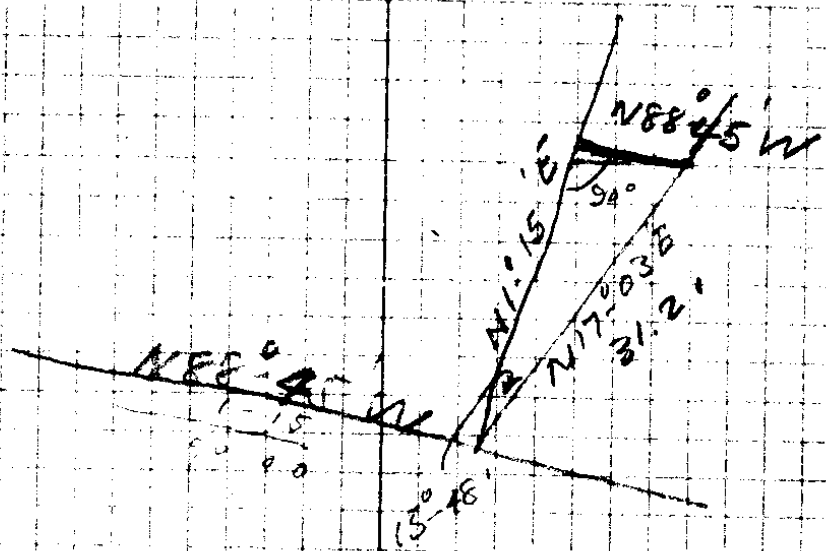
300

105.3

194.7





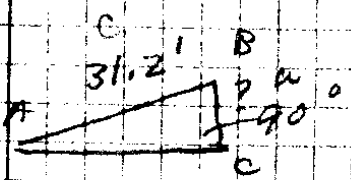


$17-03$
 1×15

 $150-48$

 88°
 $88-45$
 $1-15$

$18^{\circ} 44'$

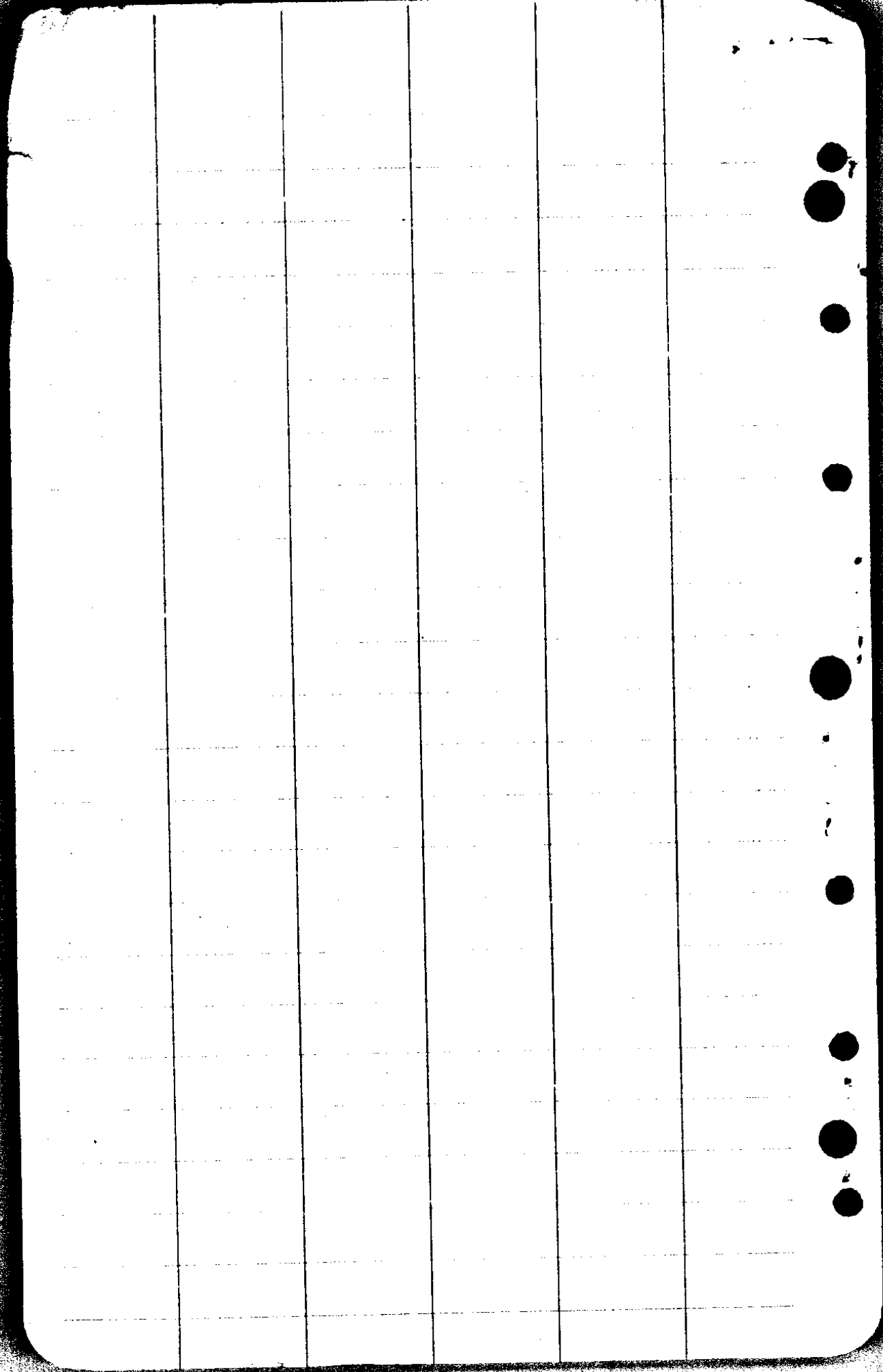


$$\sin A = \frac{a}{c}$$

$$a = \sin A \times c$$

$.2723$
 31.2

 8.49576



CS FILE FOLDER

CONTAINS

MORE

INFORMATION