



May 8, 1903

Thence S 40 chs intersect Twp Line  
 20 chs W. of S $\frac{1}{4}$  Cor Sec 35 = a  
 The SW cor Sec 35 is in SumpAR  
 at Pt intersection I set a post  
 marked CS & buried a brick  
 th-S on random line 20 chs  
 " N 20 chs SE of up cor  
 to S 20 " intersect  $\frac{1}{4}$  Cor 3 $\frac{1}{2}$   
 The dist from this cor N. to cor  
 in River is 40.70  $\frac{1}{2}$  of 86.40  
 Ran N or true line bet 203, at  
 19165 set post "B" CS from wh  
 wh oak 10" dia brs S 10° W 48 $\frac{1}{2}$  chs  
 thence E 20 ch set post "C" fr wh  
 Black oak 28" dia brs. S 45° E  
 166 lks + a white oak  
 12" dia brs S 72 $\frac{1}{2}$  W 5.23 chs

Roberts

5698-Vol-14 = N $\frac{1}{4}$  cor Sec 2  
 6467 15 E  $\frac{1}{4}$  " "  
 6473 15 W " "

1854 - Feb

N  $\frac{1}{4}$  Cor Sec 2

S89°-57'  $\frac{1}{2}$  W on E Bdry Sec 35

34.50 = Top hill +150

37.50 Leave Cap Opening +75

Smile prairie

40. = Set  $\frac{1}{4}$  Cor pro -75

9" of Cap N 13  $\frac{1}{2}$  E 306 1K5

26" of " S 72  $\frac{1}{2}$  E 296 " =195

79.10 = L bank River

S  $\frac{1}{4}$  Cor Sec 2

N. bet 1 + 2

S0°15' E

40.68 =  $\frac{1}{4}$  pro

18" B.O. N 23° W 310 L.

15" B.O. N 5° E 260 L

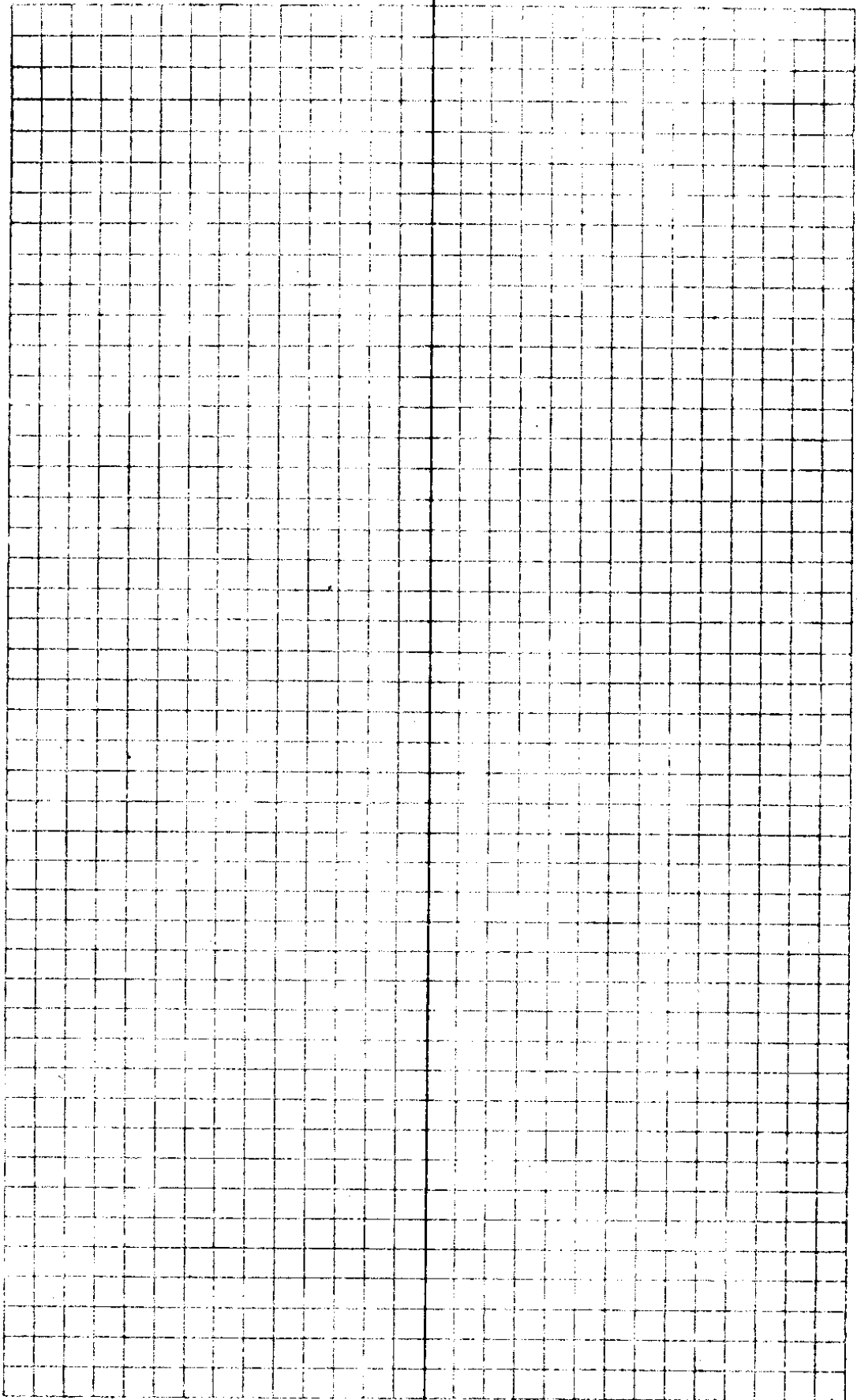
W  $\frac{1}{4}$  Cor Sec 2

S on True Line bet 2 + 3

40.00 =  $\frac{1}{4}$  Cor pro

10" B.O. S 21° W 20 L

8" B.O. N 42° E 65 L



30/44

8 = 2640 = Cen Sec = 80.9 (2560.8)

2300.3 = 1  
266.3 12° 50' 259.6 71.5  
~~73.0~~

63.5 F

7 = 2316.8 69.6

Top Hill  
6 = 2024.3 300.0 12° 45' 292.5 60.8 ✓

52.2 Flat ✓

Job 7 = #5 Top Hill = 1972.1 59.3

set 4" 226.8 12° 10' 221.6

6 Stake 1750.5 52.6 ✓

5 set 3" stake 1485.5 300.0 11° 21' 294.0 43.8 ✓

N 143.1 17° 30' 136.5

4 1320 (1280.4) set 1 1/4" Pipe 30" lg 39.6 ✓

1 869.6 20.1 ✓

N 214.7 13° 27' 208.7

3 660.3 19.8 ✓

N 190.7 21° 10' 177.7

2 = 4482.6 14.5

N 231.8 12° 45' 226.1

1 = 418 7.7 ✓

N 256.5 F

070 = 8 1/4 ca Sec 2 2/6

Dec 20, 1937

26 27

Buyer N. ERCHOLDSON

300  
696  
2304

256.5  
226.1 2  
177.7 2  
208.7 2

869.0  
300  
1169.0

266.3  
975

133.15  
186.41  
239.67  
259.6425

1320  
1169  
151.

300  
236.5  
63.5

143.1  
984

5724

7155

12879

136.5 174

980  
300  
2940.0

977.1 6

2268

78168

58624

19542

22160625

1320  
136.5  
294.0  
221.6  
52.2

2024.3

292.5

63.5

2380.3

259.6

2639.9

2640

2024.3

615.7

26405

23803

260.2

975

3

297.5

214.7 5

972

4278

15029

19323

248.66581

190.7 8

932 8

3814

5721

17143

177.7324

9753 3

221.8

78024

9753

29259

19506

22607454

226.1

208.5

4826

320. 6

136.5 6

294. 6

221.6 2

52.2

292.5 5

63.5 5

239.8 4

2639.9

2639.9

65.2

Mag N

0.4

563.3

32.1

Point 1 on

30/44

5166 =  $\frac{1}{4}$  Corner bet  $\frac{35}{2}$  ←

164.3 15°31' 158.0 - 2.7 = 155.3' to Cor.  
 Hub 12 Δ = 90° + 28.5' to Cor = 5166.1  
 4678.3 459.3 459.3 1434  
 4091.2 300 13°21' 291.9 125.4  
 300 10°15' = 295.2

1451.2' N cen sec = 4091.2  
 #11 N 74.0

1377.2' N of " cen sec = 572' N cen sec = 4017.2 123.2' E

(3841) 298.5 7°20' 296.1

Tacked Hub = 1081.1' N cen sec = 3721.1  
 #10 108.6 108.6

300 11°17' 294.2 114.1  
 9 at spring = 3318.3 99.7  
 101.7

300.0 14°40' 290.1  
 9 3028.2 ✓ 921.8<sup>0</sup>

Center 3882 F. Pipe 79.3  
 $\frac{1}{4}$  Cor = 2640 = 2" Pipe 80.9  
 sec 2640

2640  
1-

(4)

2526 5280  
2640 5166  
5166 114.

5166) 155.30 (300619  
15498

25166  
2588  
03  
27.64

32000  
30996  
10040  
5166  
48740  
46494  
2246

358.2 3  
290.1 3  
294.2 6  
1086  
1081.1

1451.2 2640  
295.2 2526  
291.9 114.  
459.3

2497.6  
22.5  
2526.1  
1643  
963  
9

164.3 5  
962 8/10

3286  
9858

14787

1550566 954  
2952

295.2 973  
290.1 3  
294.2 3  
198.6 291.9  
296.1 1046.4  
174 1451.2 ✓

1451.2 2640  
22.5  
2526.1

298.5 6  
992 3  
5970  
26865  
26865  
2961120  
2389  
57.2

1320  
1081.1  
238.9

1081.1  
296.1  
1377.2  
74  
1451.2

981  
294.3  
1086  
402.9

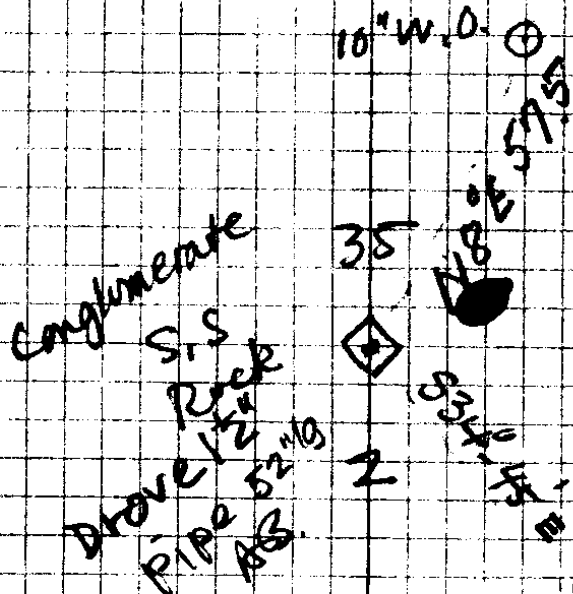
767 1320  
3  
290.1 678  
380.2 442  
678.3

90/44



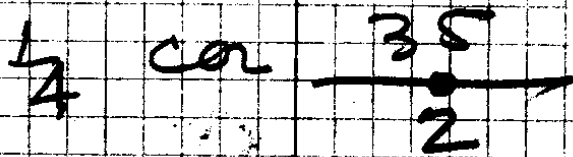
29/6

ABony  
NE Richardson  
F. D. Coon  
Gus Weigel  
↑ Russell



Dec 20  
1937

N 1/4 Cor Sec 2



Found evidences of two  
orig B.T.s for this Cor  
No knowledge of who set  
these two trees which show  
ties - Rock is property set 30/44

