

FILED

MAR 1 1938

TB

Most Westerly N.W. Cor. D.L.C. 49

Found Orig Rock
Set 1 1/2" Pipe

12" Round Conc. Post (S.E. corner Cemetery)

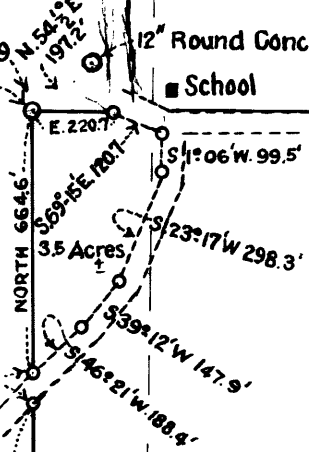
School

N.E. Cor. D.L.C. 49

WEST 3600.3'

1" Pipe

County Road 60' wd.



Most Westerly
NW Cor. Pierce D.L.C. 49
Set 1" Pipe.
Found Orig Marked Rock. E. 1714.2'

Sec. 35

Sec. 36

S 61° 27' W
325.1'

County Road
N 44° 13' E 503.5'

Paulson
34 Ac±

Ash (Stump) 31.7' N.

Ash (Stump) 8.6' N = B.T.

E 922.9

24" B.Oak S 85° W 425.5'

Wm. H. Long
5.3 Ac±

S 61° 20' W 1051.6'

3/4" Pipe

S 44° 12' W
339.5'

12" W Oak

24" W Oak

Set 4" Oak Roller
1/2" Iron Rod in Center

T. 25 S.
T. 26 S

N 50 1/2°

Sec. 2

Sec. 1

N.E. Cor. Stucker D.L.C.
Set 4" Oak Roller, 1/2" Iron Rod in center.
also S.S. Rock.

NORTH 1175.5'

County Road 60' wd.

30'
30'

1" Pipe 35' East of Cor.

S.W. Cor. Pierce D.L.C. 49

Set 12" x 12" x 15" deep, Conc. Block
2" Pipe 40' s. of Corner

EAST 5280.1' (1 Mile)

Set Concrete Block 12" x 12" x 15"
S.E. Cor. D.L.C. 49

NORTH 2917.2'



COUNTY SURVEYOR'S OFFICE ROSEBURG, OREGON.

THE A.E. THOMPSON RANCH
UMPQUA, ORE.

IN MARY PIERCE DONATION LD. CLAIM 49, T25S; R7W & CLM. 44, T26S; R7W.

DOUGLAS COUNTY, OREGON.

NOV. 1937.

DRAWN BY ARTHUR BOYER

SCALE, 1" = 500 ft.

30/38-2

CS FILE FOLDER

CONTAINS

MORE

INFORMATION