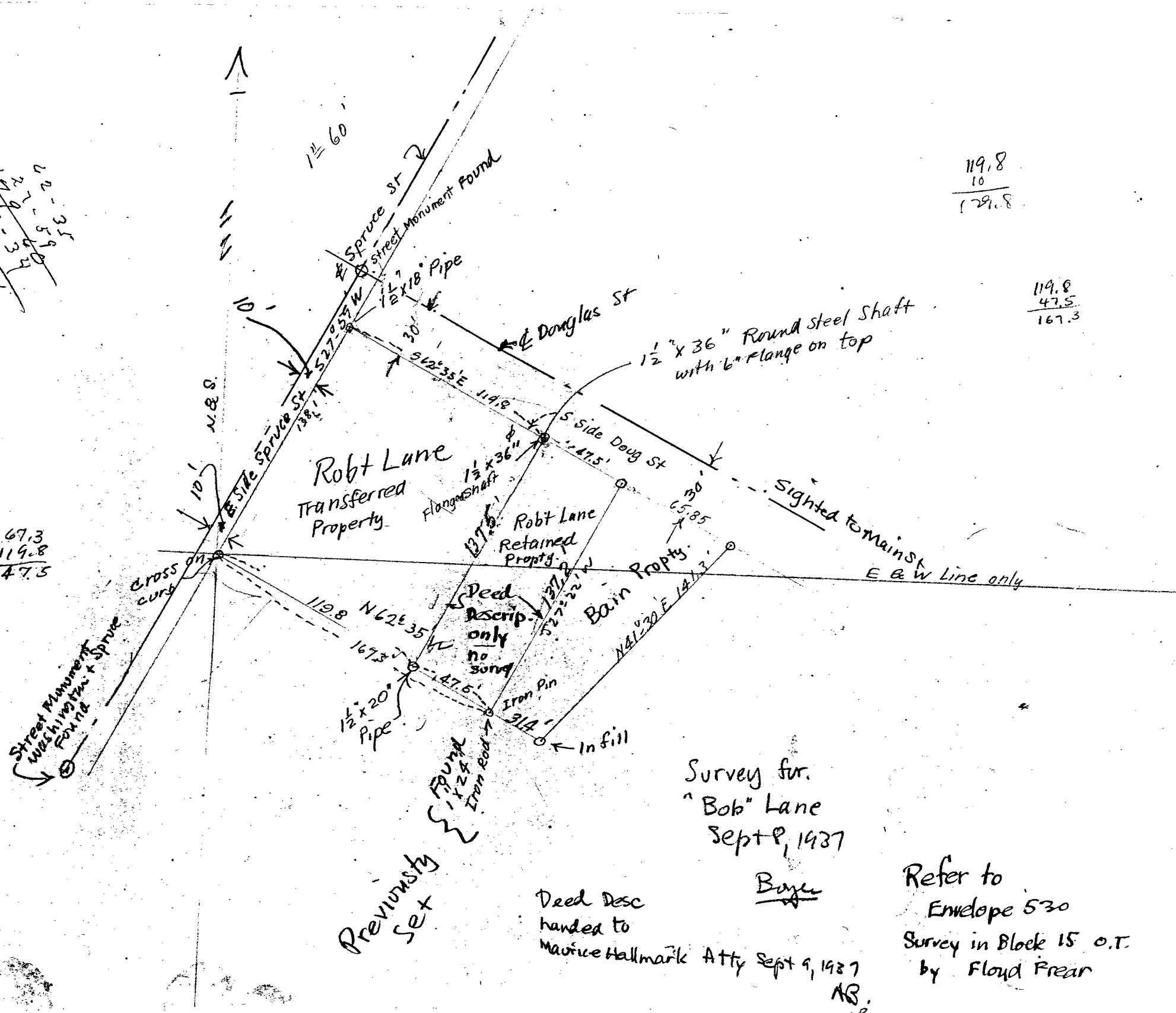


167.3
119.8
47.5

119.8
10
129.8

119.8
47.5
167.3



Survey for
"Bob" Lane
Sept 9, 1937

Boyer

Deed Desc
handed to
Maurice Hallmark Atty Sept 9, 1937

ABP

Refer to
Envelope 530
Survey in Block 15 o.t.
by Floyd Prear

FILE 31 DRAWER 30

Previously
Set

30-37 Sept 8, 1937

Boyer

NE Richards in
Tomain St.

St. Mon.

DOUGLAS ST

SPRUCE ST
102
138.1
N 272.59 E
10
92.5
96.6

30' 19.8' 562.35'E

1/2" x 18" Pipe

1/2" Steel
Round
Shaft
6" Ring
on top
36" lg

cen st

119.8' 129.8'

BUREAU

1/2" Pipe
60" lg
68.1'

St Mon Wash St

Found
this "rod"
Previously set

CS FILE FOLDER

CONTAINS

MORE

INFORMATION