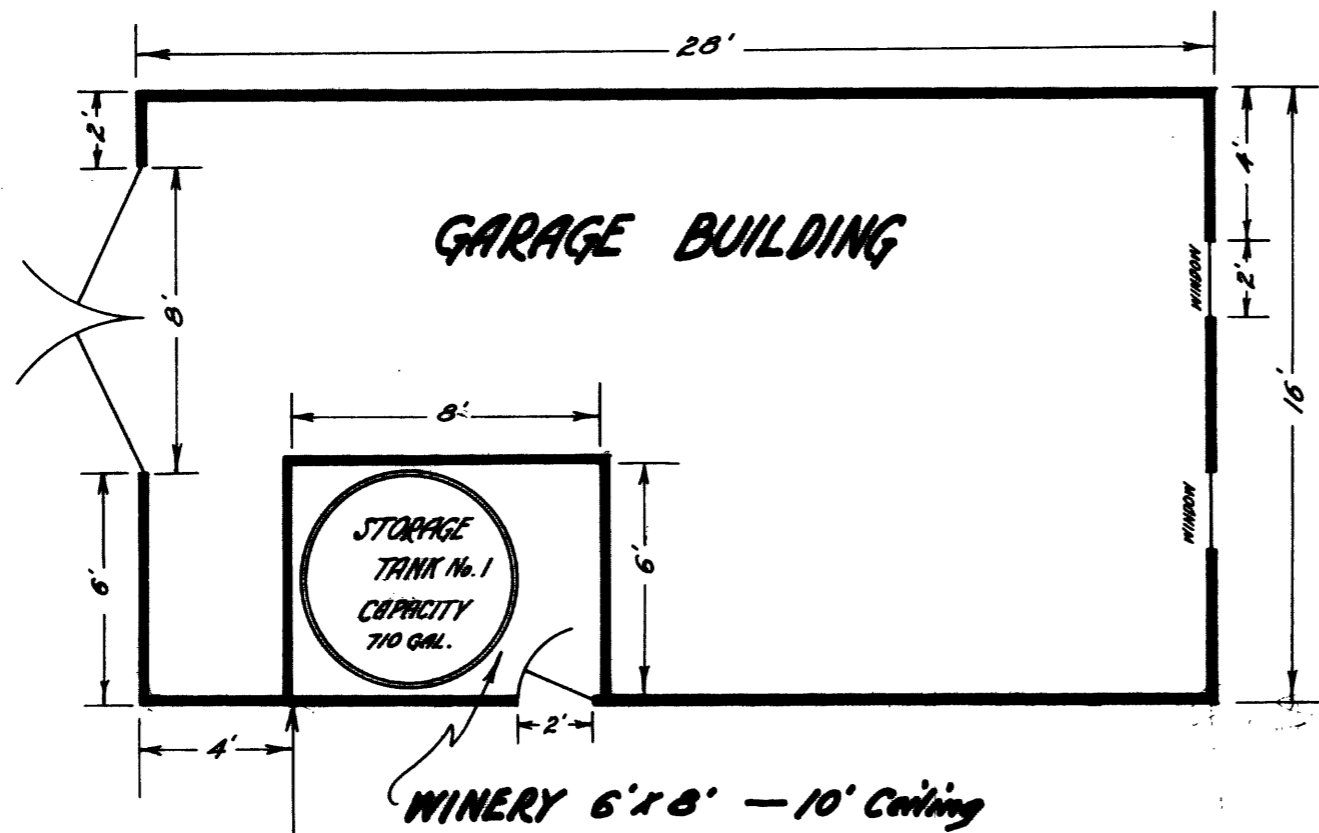


LOCATION OF
A. H. DOERNER'S WINERY

IN
SEC 24, T26S R7W N.M.
COUNTY SURVEYOR'S OFFICE
JANUARY 24, 1935



I hereby certify that this plat correctly shows
the location of my winery as located on my
land.

Adolph H. Doerner

I hereby certify that this plat is a correct
representation of the winery location from
notes furnished me by Mr. A. H. Doerner.

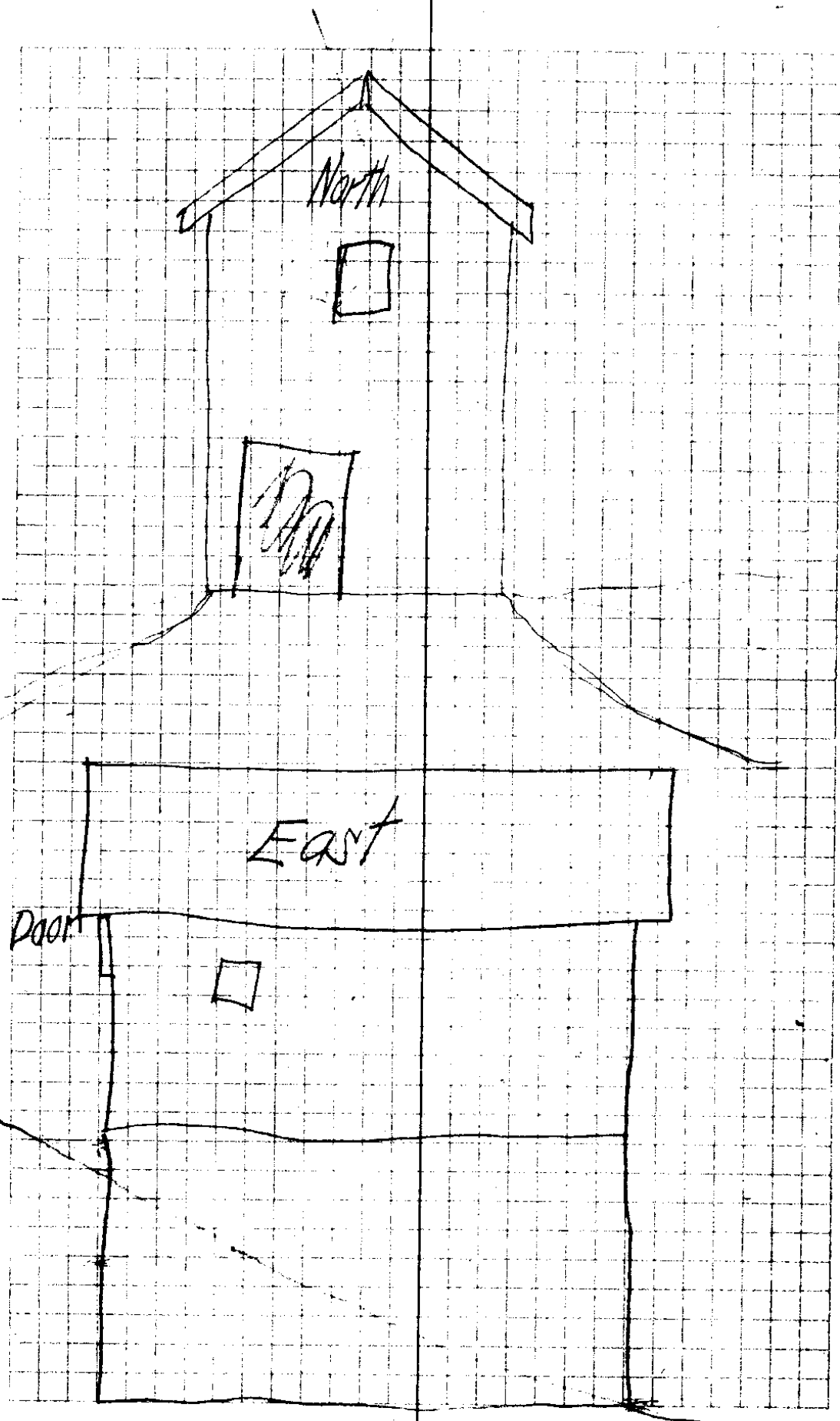
H. L. Epstein
COUNTY SURVEYOR

220'

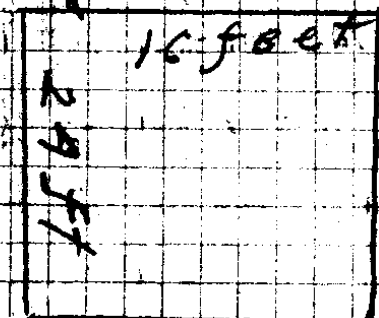
256'

SOUTH LINE OF NW 1/4 OF NW 1/4

SE COR. OF NW 1/4
OF NW 1/4



See opposite page



Adolph
Dorners
Winery

North to East
Mon Monday Sept 23rd

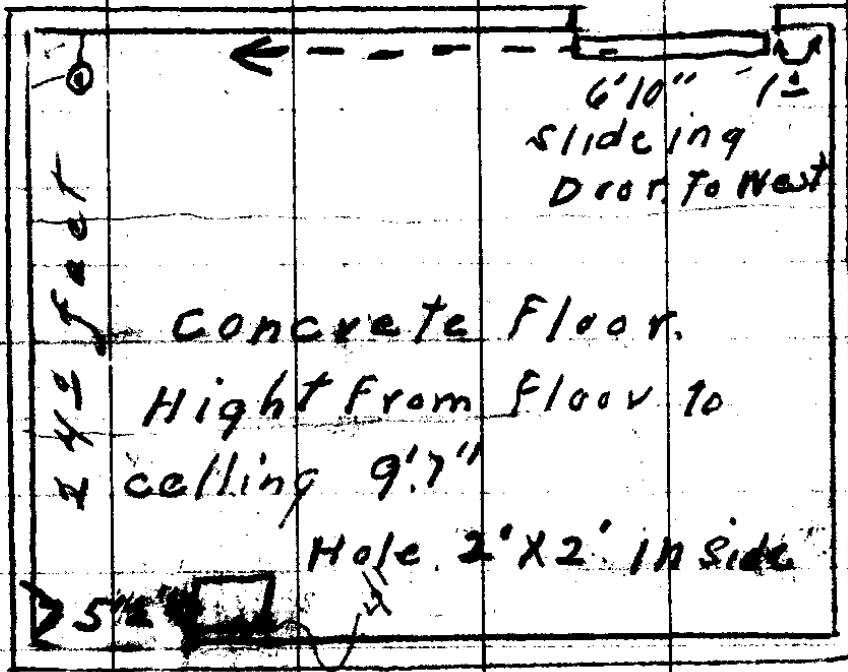
2830 FT

371² FOOT

SE Cor. of NW
1/4 of NW 1/4
of Sec. 24
T26 S R 7 W M

30/30

Lower Floor.



Walls 7" thick

16' x 24' outside measure

Co 1

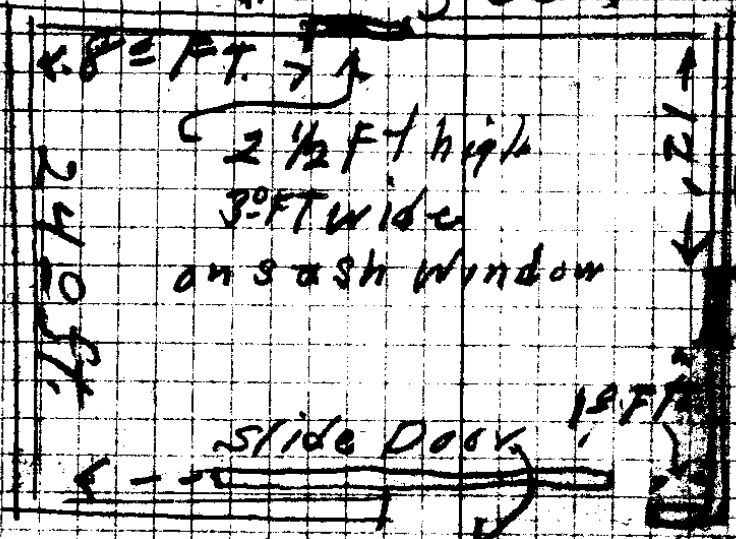
Latched with Hasp From outside
Hasp fastened From inside

Height of opening For door
7'6" High
6'10" Wide

second Floor

Window Slide To West
Fastened with Bolt in side

with Bolt in side



Window slides to North Face of wall with Bolt on side

Sliding Door same as lower floor

Height From 2 Floor to ceiling 10 feet

O.V.C.T.

50/30

