

This beg. point  
 is South 1320'  
 East 1320'  
 from N.W. Cor  
 SEC 21

N. Line S.E.<sup>4</sup>NW.<sup>4</sup> Sec 21  
 EAST 427. Ft  
 NW COR  
 S.E.<sup>4</sup>NW.<sup>4</sup> Sec. 21

Fence

South 655.4'  
 W. Line S.E.<sup>4</sup>NW.<sup>4</sup> Sec. 21

2.6 AC. ±

N23°44'E 304.7'

Center of  
 Hubbard  
 Creek

N42°29'E 328.3'

N49°10'E  
 81.7'



S44°10'  
 45'  
 Cross on  
 Rock

Right of Way for Pipe Line to S. Line Forty  
 S 59° E 1291'

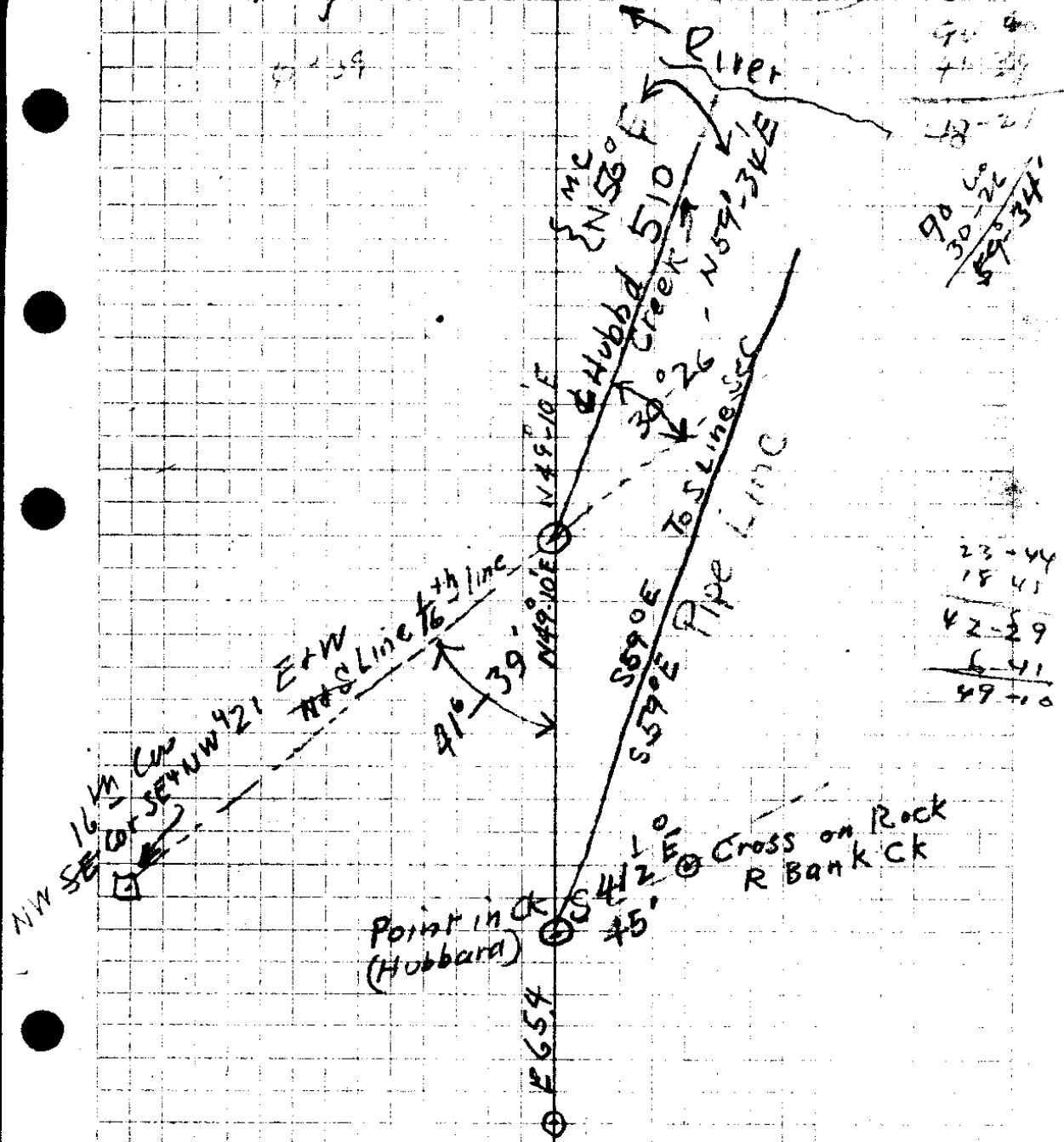
S. Line SE.<sup>4</sup>NW.<sup>4</sup> Sec 21.

That Portion of the SE.<sup>4</sup>NW.<sup>4</sup> Sec 21  
 T 25S; R 7W; WM. located W. of Hubbard Cr. &  
 Pipe Line Right of Way - for Deed from  
 B. B. SUTTON TO R. R. CLARK.  
 Aug. 1937. Scale 1" = 100 ft  
 Arthur Boyer, Dep. Co. Surveyor.

C.S. 30/23-3

Aug 9, 1937  
 Buyer Lane

36°-26' Aug 9



90 40  
 + 10 20  
 ---  
 100 60  
 30-26  
 59-34

23-44  
 18 45  
 ---  
 42-29  
 6-41  
 ---  
 49-10

9816  
 2484  
 ---  
 39264  
 18528  
 ---  
 34264  
 19632  
 ---  
 4382971

30/23

Aug 9, 1937  
Boyer Lane

Umpqua River Meander

N60°15' E  
435'

Orig Yew Post  
Set Auto Axle  
gear on top

5' S63° E  
16 cor  
Alfafa

12" Maple

2" Iron Pipe  
on Line



W 10 AC

Lot 2

Sec 21

Ridge  
County Road

Set Yew Post  
at edge  
clearing

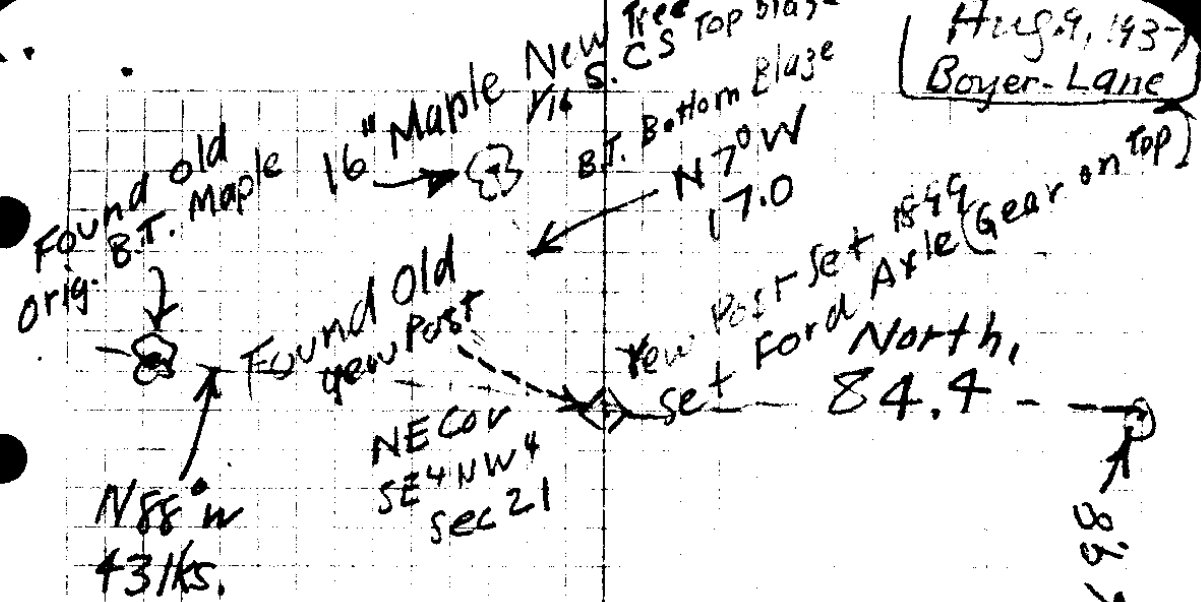
1320'

1155.0

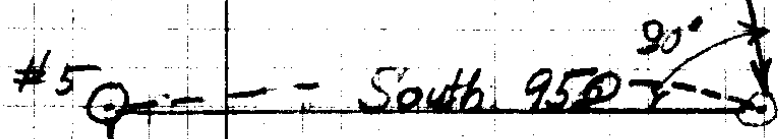
354'

section to . . . . .

Aug 9, 1937  
Boyer-Lane



East  
155.7.3 }  
2/41 } 369.8



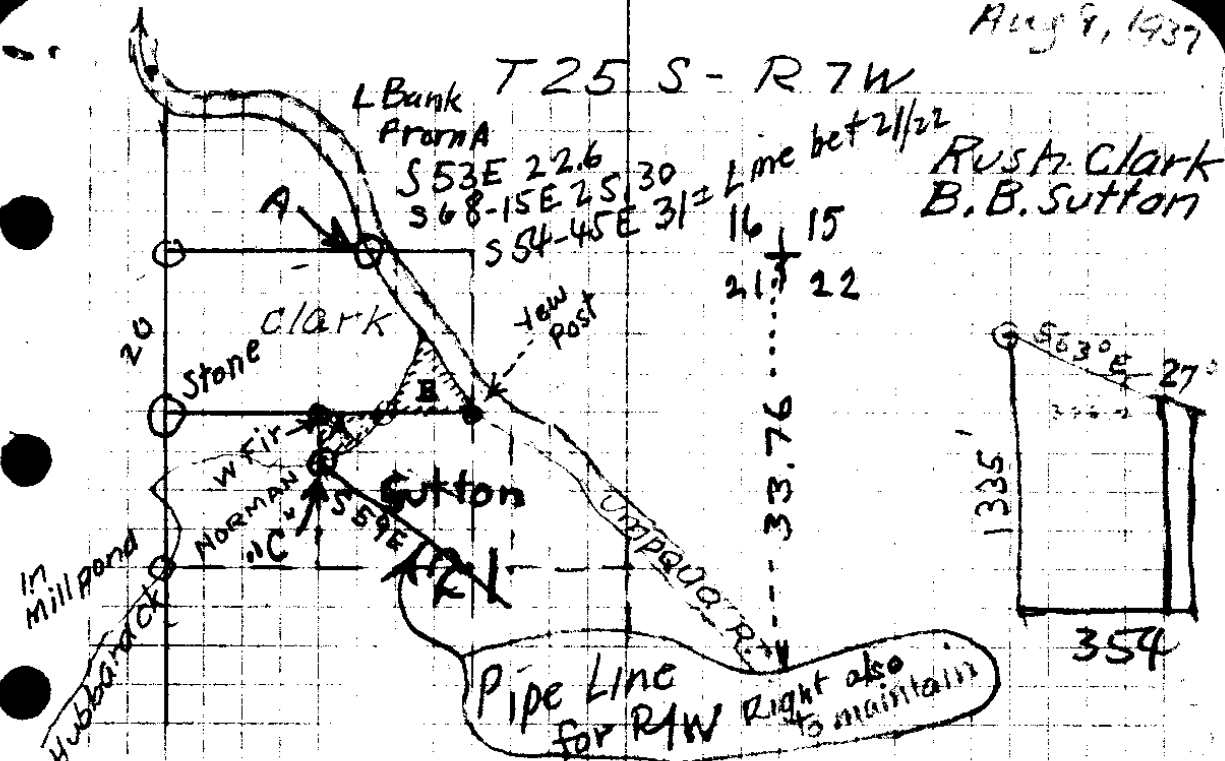
- #5
- #4
- #3
- #2
- #1

950  
84.4  
-----  
10.6

" " "  
Point C

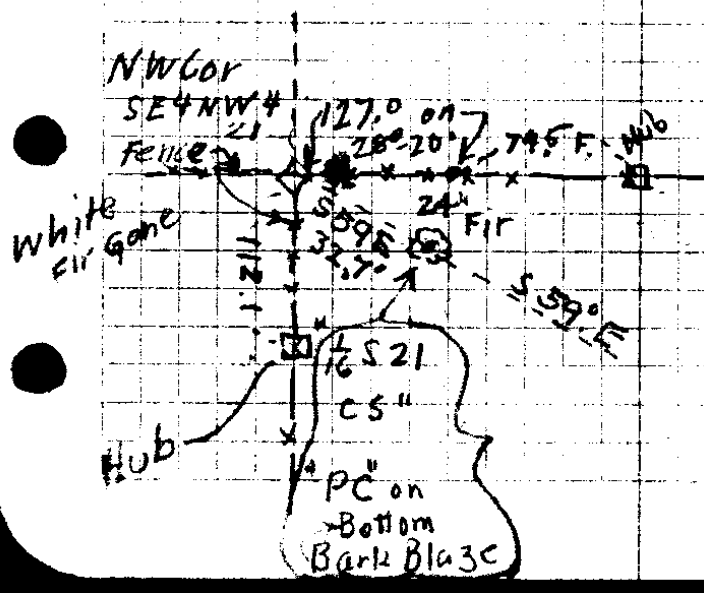
30/23

Aug 9, 1937



Beg at NW Cor. Sec 21, T25 S E 7W South  
 From Cor. 4.00 = Top Spur  
 South 11.50 " Ridge steep descent  
 20.00 Set stone 16x8x6 for Cor.  
 did not run line S. to 1/4 Past  
 as stands in millpond.

To East from 1/4 Cor  
 3.1 Co. Road, thru pasture  
 20.0 Marked white fir for Cor.  
 25.3 L. Bank Hubbard Ck.  
 40.0 Yew Post 50" S of bank of  
 Umpqua fr. wh.  
 18" Maple brs. N88W 43 lks  
 28" " " S. 52 E. 33 "



30/23