

Arthur Cole Austin +  
Margaret H

Jan 19-1931

W 5 Ac of E 10 A of Lots 3 & 4  
B1 3- Plat D.

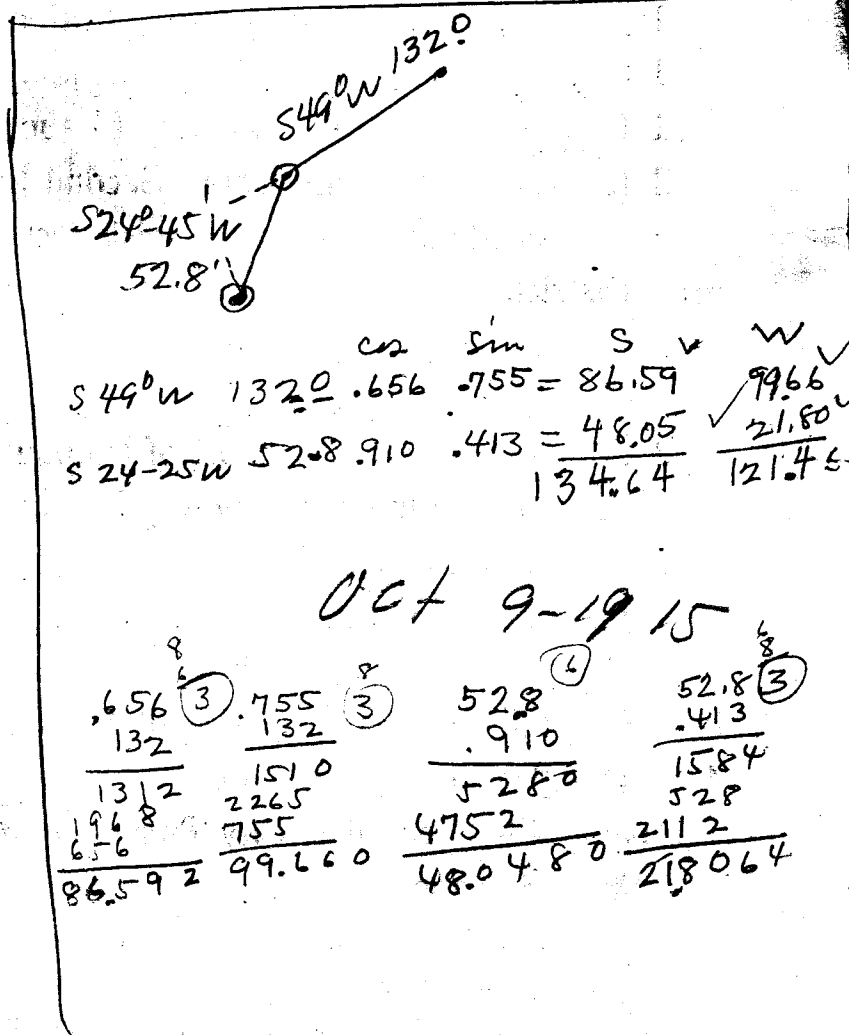
Begin at pt wh. brs S 49° W 132.0, thence  
S 24° 45' W 52.8' fr. the NE cor Lot 4 B1, 3  
Plat D. - Thence

S - 1735.9. to pt in E Central Ave;  
thence S 67° 45' W 145.6 along " " E  
- " N 1499.1' to pt. in E Co. Road  
" N 24° 45' E 321.4 along " " E  
to beg = 5 Ac.

Cert # 2280  
Deed # 2604

June 23-1932

Affidavit File # 9386



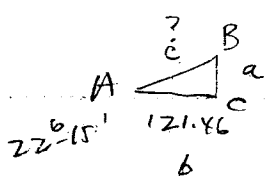
	cos	sin	S	W
S 49° W 132.0	.656	.755	= 86.59	99.66
S 24-25 W 52.8	.910	.413	= 48.05	21.80
			134.64	121.46

Oct 9-1915

.656 (3)	.755 (3)	52.8 (4)	52.8 (3)
132	132	.910	.413
1312	1510	5280	1584
1968	2265	4752	528
656	755	480480	2112
86.592	99.660		218064

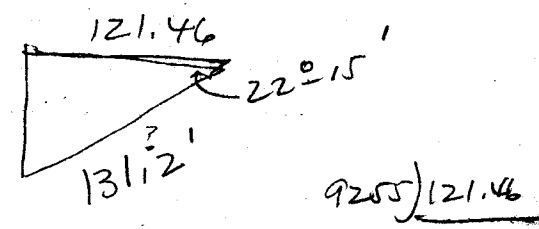
Minnie Austin  
Town of Sauk Center  
Stearns Co  
Minnesota  
married to  
Arthur W. Austin

$$\frac{90}{67.45} = \frac{22.15}{121.46}$$



$$\sin A = \frac{a}{c}$$

$$c = \frac{a}{\sin A}$$



$$9255 \overline{) 121.46}$$

$$3785 \overline{) 121.46}$$

$$\cos A = \frac{b}{c}$$

$$c = \frac{b}{\cos A}$$

S. P. No. 30/16