

ROY ASSE, COUNTY CLERK  
PERCY A. WEBB, SHERIFF  
D. H. LENOX, TREASURER  
BARTON HELLIWELL, ASSESSOR  
EDITH S. ACKERT, SCHOOL SUPT.  
H. C. STEARNS, CORONER  
F. C. FREAR, ROAD MASTER  
H. L. EPPSTEIN, SURVEYOR  
AGNES M. PITCHFORD, JUVENILE OFFICER

# DOUGLAS COUNTY

GEO. K. QUINE, COUNTY JUDGE  
R. L. STEARNS } COMMISSIONERS  
B. S. NICHOLS }  
GUY GORDON, DISTRICT ATTORNEY

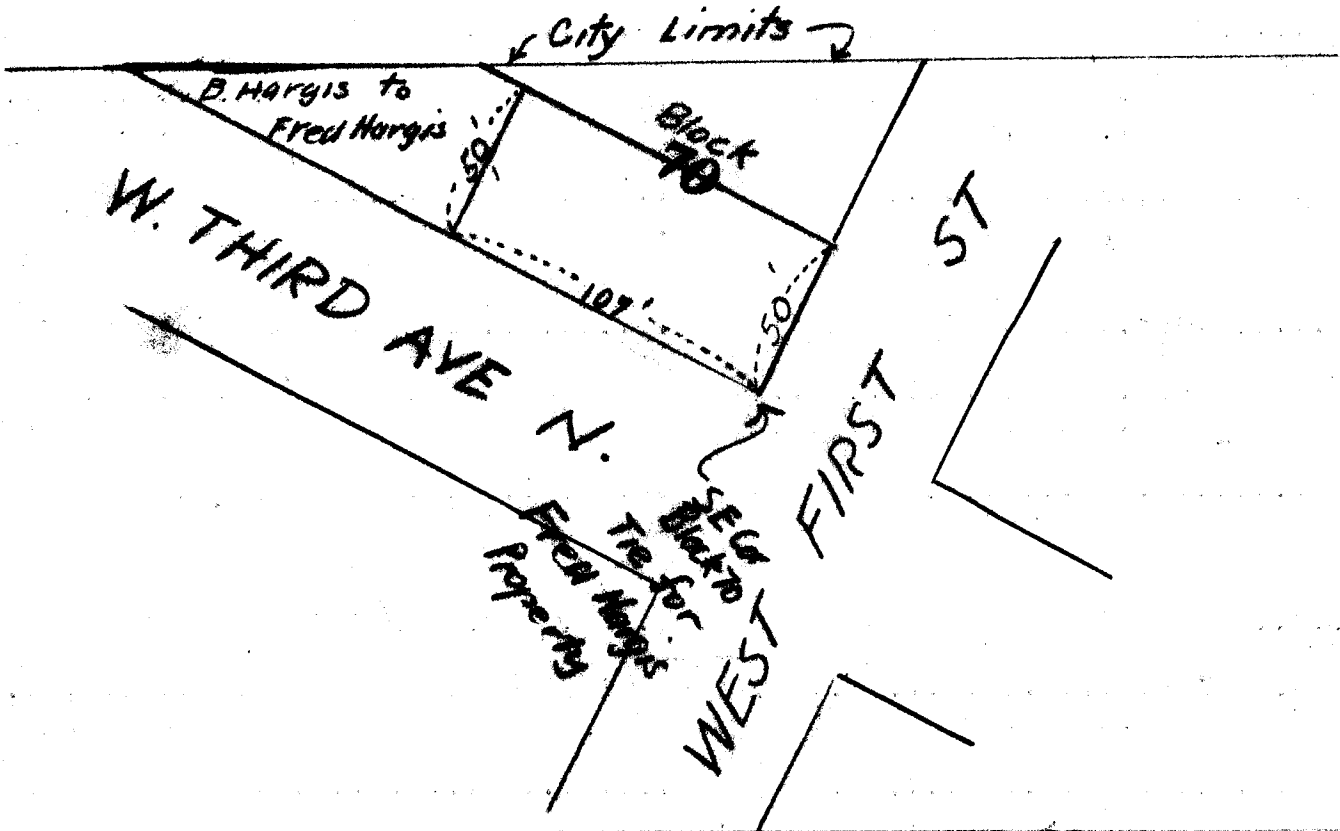
COUNTY COURT  
FIRST WEDNESDAY OF EACH MONTH



ROSEBURG, OREGON

Dec. 7, 1936

*ABoyce*  
Dep. Co. Surveyor



## B. Hargis to Fred Hargis

That part of Block 70 of subdivision A of Kinneys Addition to the City of Roseburg described as beginning at a point on the S. Line Said Block 107.0' westerly from the S.E. cor Said Block 70, thence Northerly on a line parallel with the E. Line Said Block, 50.0 ft to a point, thence westerly on a line parallel with the S. Line Said Block, to the City Limits thence following along city Limits line to the S. Line Said Block, thence Easterly along S. Line Said block to the point of beginning.

C. S. File No. 3014