

PLAT OF PROPOSED SEWER SYSTEM FOR DISTRICT, PITZER TO MAIN ST, NORTH OF COURT STREET.

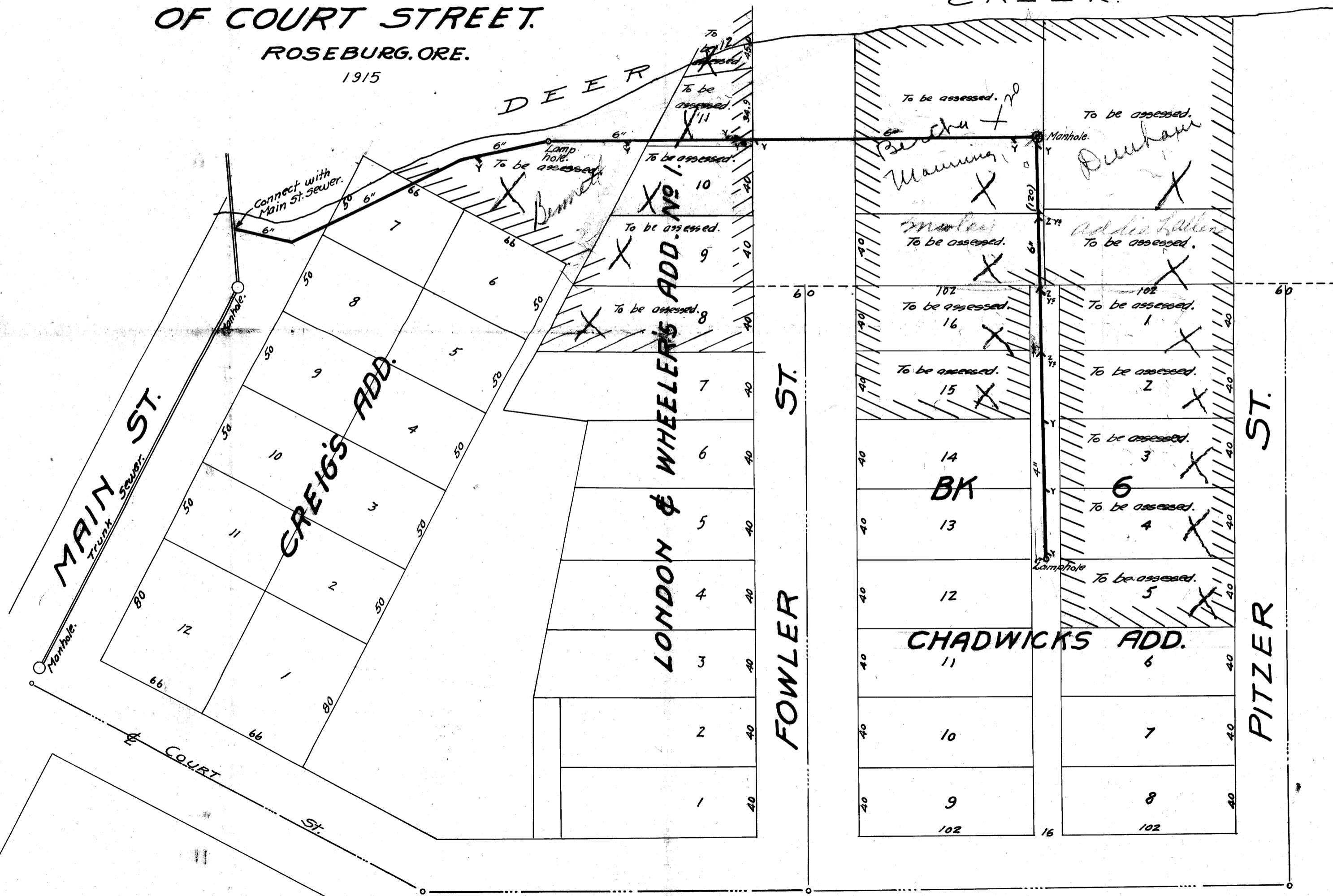
ROSEBURG, ORE.

1915

0 = manhole
 0+52 Manning Y
 1+52 Sutter Y
 2+17-2-Y
 2+87-1-Y

} 6" line

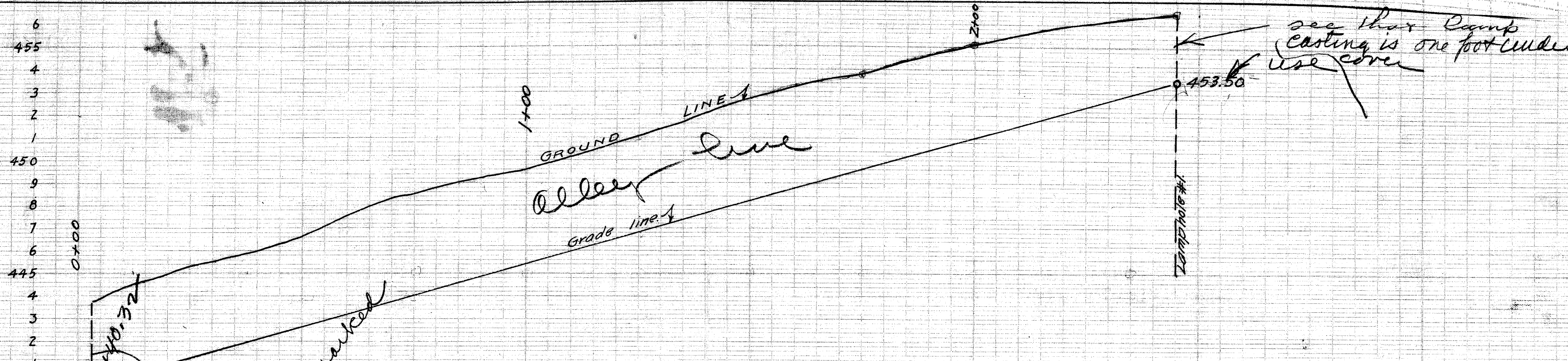
0 = manhole
 0+60-2-Y
 0+85-2-Y
 1+24-2-Y
 1+60-1-Y
 2+00-1-Y
 2+40-1-Y



336.14

10-6
5-4

FILED
 1915
 Carl E. Ellingbo
 City Recorder

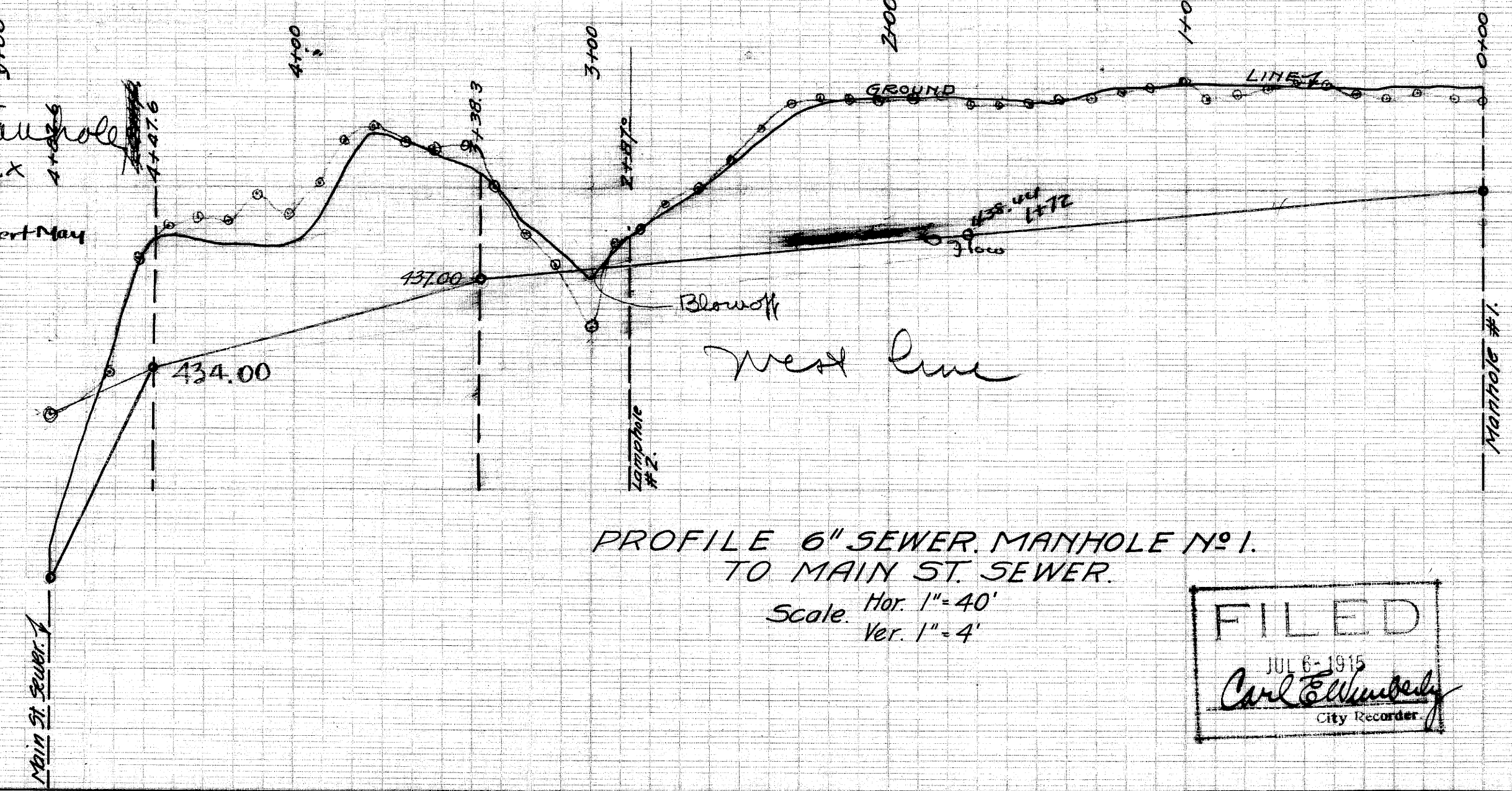


PROFILE OF ALLEY LINE BK. 6.

Scale Vert. 1" = 4'
Hor. 1" = 20'

Cut 2' 10³/₈" to grade of sewer line west* Ele 440.12
Cut 2' 8³/₈" to grade of sewer line south Grade Ele 440.32
To be marked

west
south
This grade is 0.2 to be put in manhole channel*



PROFILE 6" SEWER. MANHOLE NO. 1. TO MAIN ST. SEWER.

Scale Hor. 1" = 40'
Ver. 1" = 4'

FILED
JUL 6-1915
Carl Ellmberg
City Recorder

CS FILE FOLDER

CONTAINS

MORE

INFORMATION