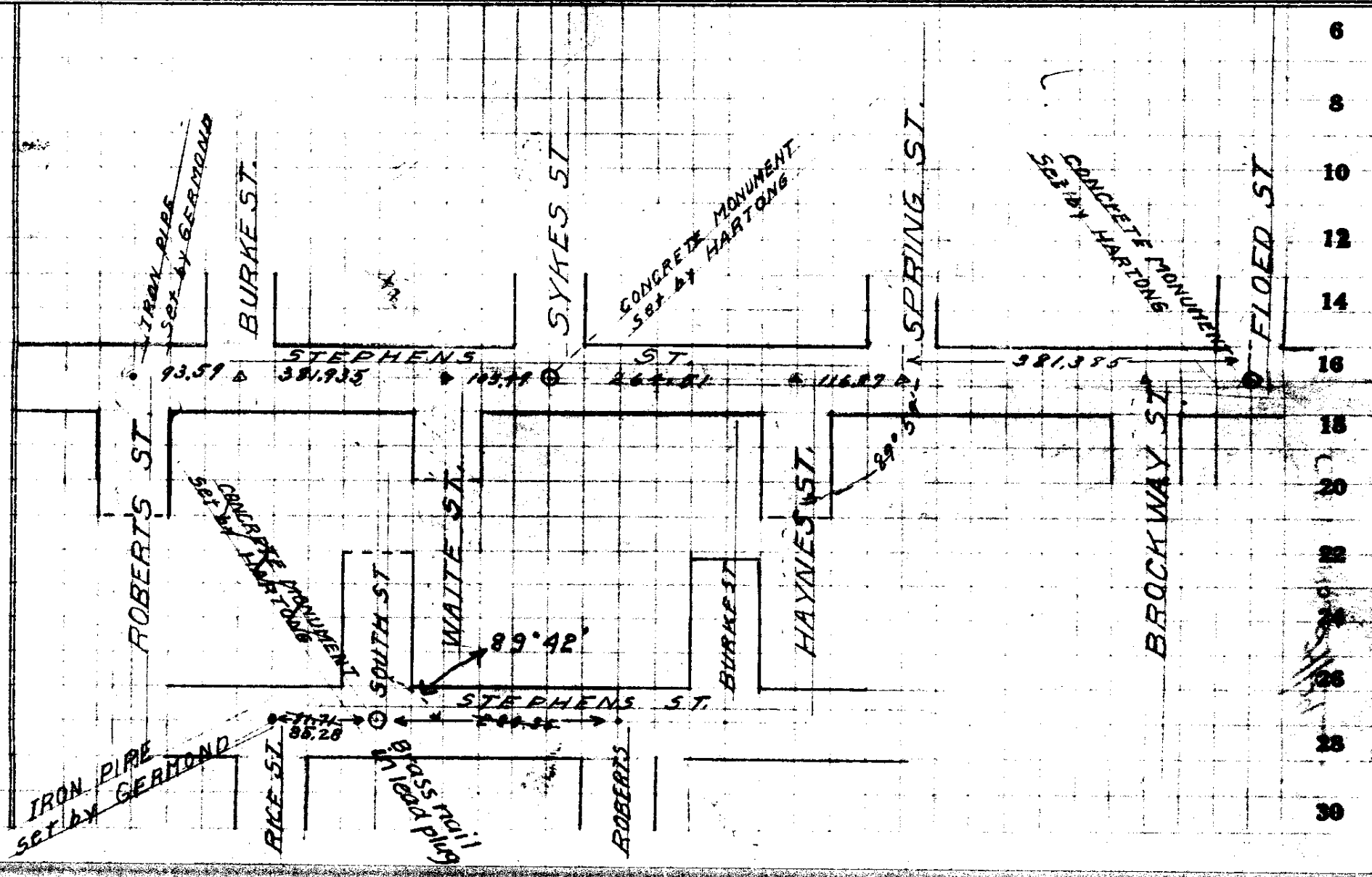


DISTANCES IN STEPHENS STREET

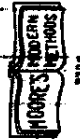
John C. Moore Corporation, Rochester, N. Y. Binder and holes in leaves, each Patented 1906.



Quadrille Ruled Form.

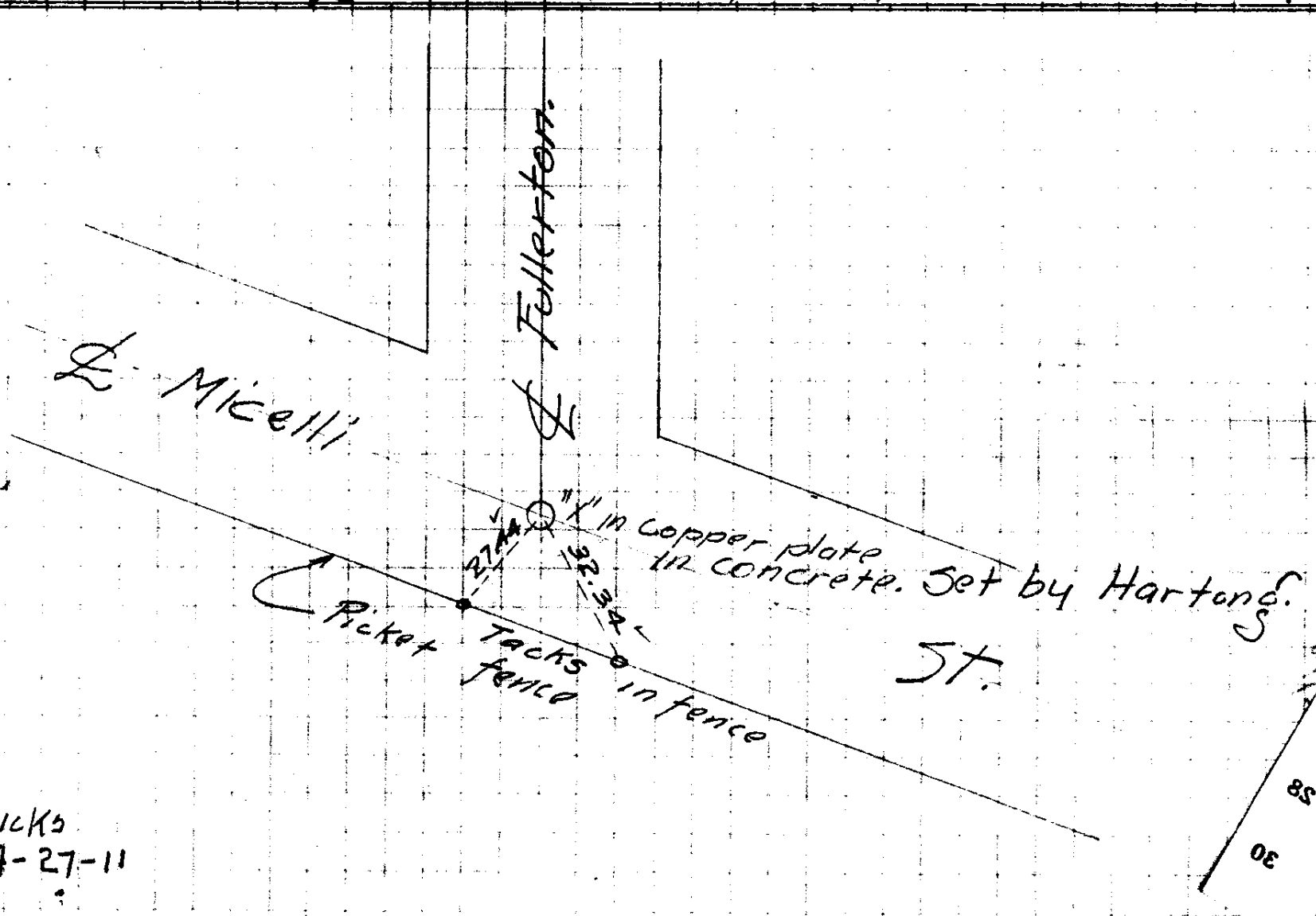


2
4
6
8
10
12
14
16
18
20
22
24
26
28
30



John C. Moore Corporation, Rochester, N. Y. Binder and holes in leaves, each Patented 1906. Quadrille Ruled Form.

Ties to \oint Monument, Micelli & Fullerton St.



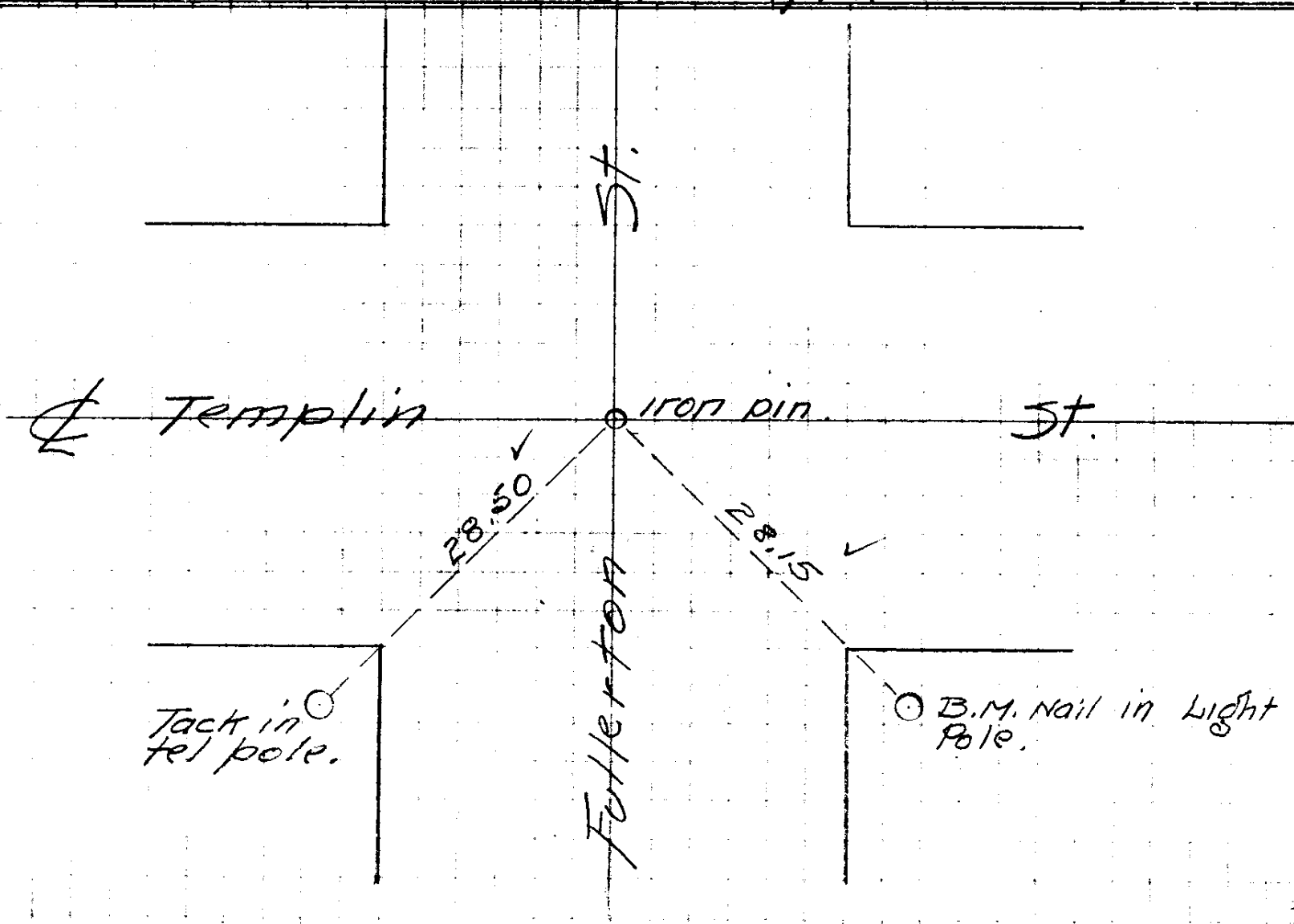
Hicks
4-27-11

2
4
6
8
10
12
14
16
18
20
22
24
26
28
30



John C. Moore Corporation, Rochester, N. Y. Binder and holes in leaves, each Patented 1906. Quadrille Ruled Form.

Ties to St Mon. Templin & Fullerton.



2
4
6
8
10
12
14
16
18
20
22
24
26
28
30

Handwritten scribbles and marks.



Prices on 1 complete unit 1000 K.W.

John C. Moore Corporation, Rochester, N. Y. Binder and holes in leaves, each Patented 1906.

F.O.B. Portland

Generator 1000 K.W. 225 R.M.M. 7765 00 ✓

Exciter 35 K.W. 582 00 ✓

3 Transformers Sta end 33 K.W each \$

2200 to 20000 Volts. @ 1300 00 ✓

3900 00 ✓

65 00 ✓

Sta transformer for Sta lts

Switchboard. Complete for 1 unit. 1025 00 ✓

6 - disconnecting switches

20000 Volts cap #/5 each 90 00 ✓

Lightning arrester 415 00 ✓

Pole line @ 1300 1/M = 14300 00 ✓

3 transformers,

20000 to 2200 @ 1300 2900 00 ✓

Switchboard 275 00 ✓

32317

E.F.

Hauling,
Installation.

30

28

26

24

22

20

18

16

14

12

10

8

6

4

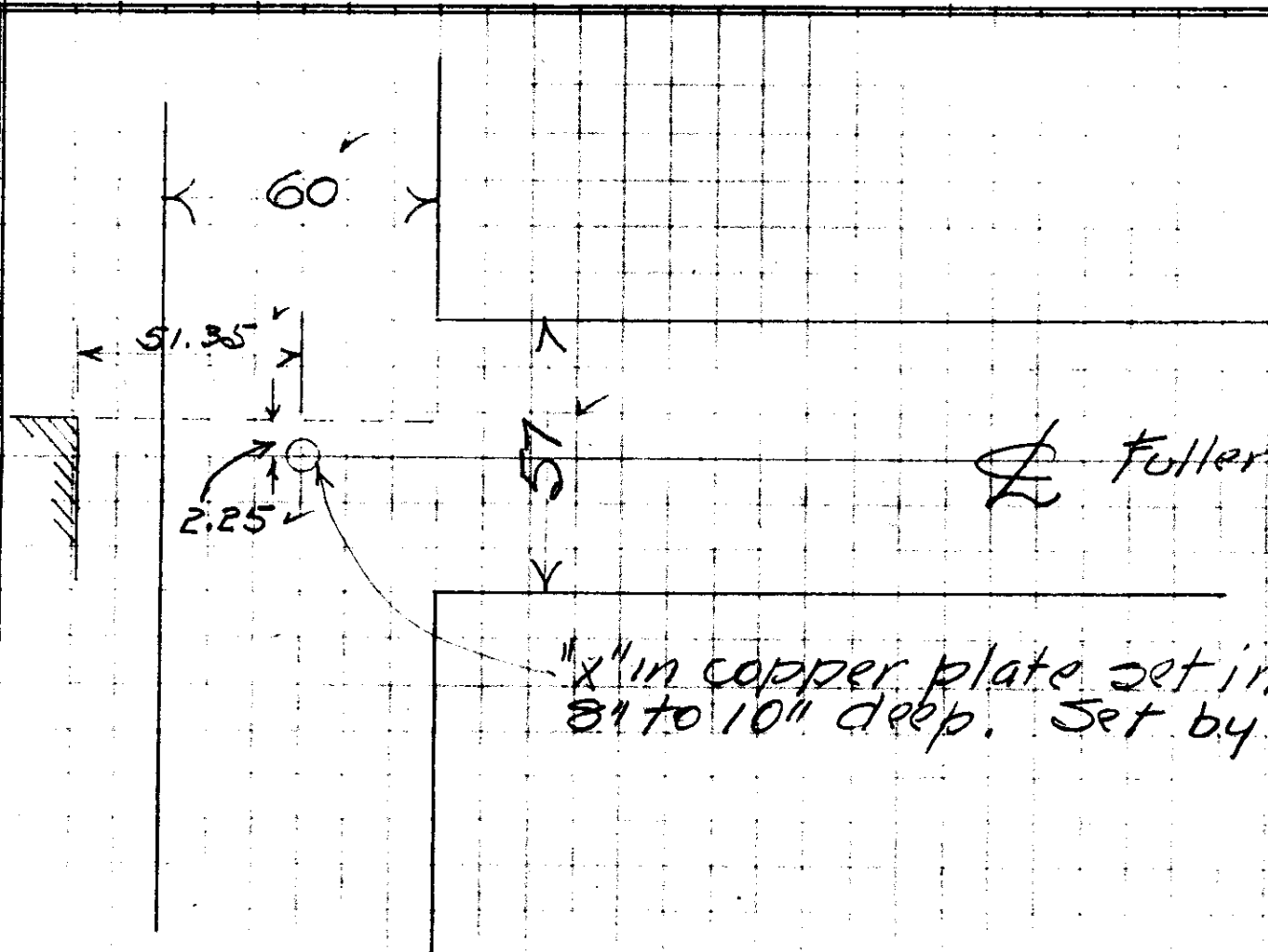
2

John C. Moore Corporation, Rochester, N. Y. Binder and holes in leaves, each Patented 1906.



Quadrille Ruled Form.

Ties to St Mon. Mosher & Fullerton.



Fullerton.

1/2" in copper plate set in concrete.
8" to 10" deep. Set by Hartong.

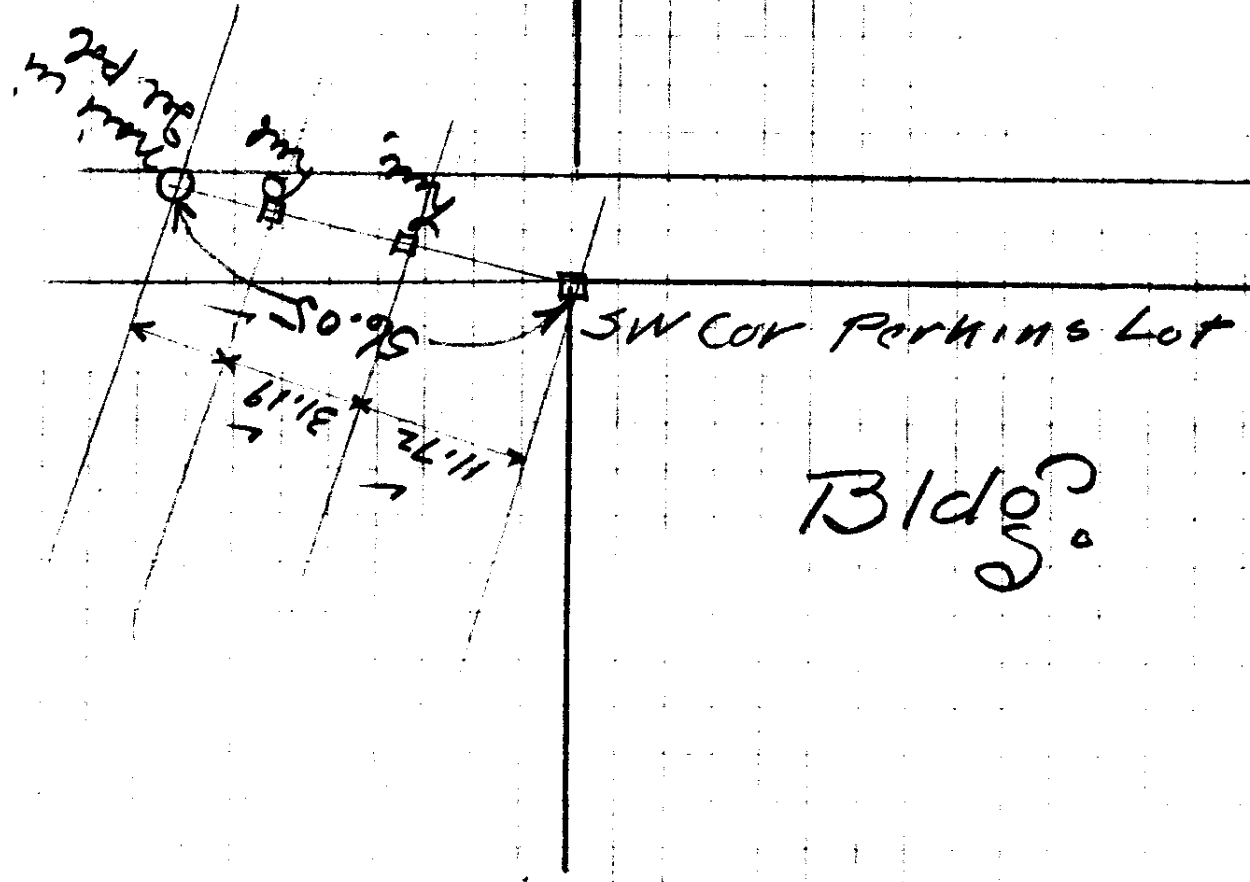
Hicks 4-27-11

2
4
6
8
10
12
14
16
18
20
22
24
26
28
30

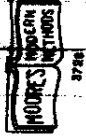
Tie to Perkins SW Cor. Cor Rose & Cass,

2
4
6
8
10
12
14
16
18
20
22
24
26
28
30

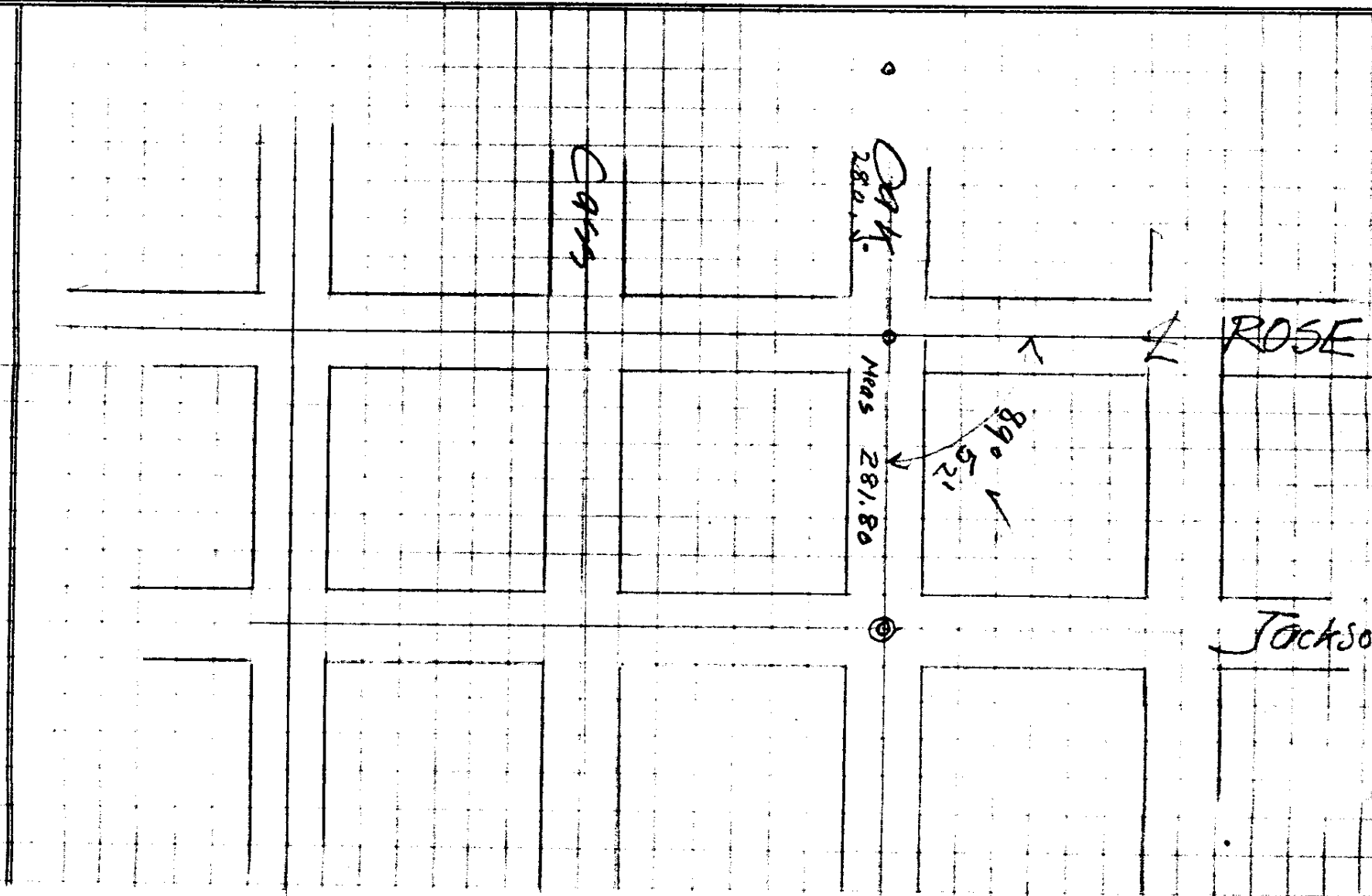
John C. Moore Corporation, Rochester, N. Y. Binder and holes in leaves, each Patented 1906.



Bldg



John C. Moore Corporation, Rochester, N. Y. Binder and holes in leaves, each Patented 1906.



2
4
6
8
10
12
14
16
18
20
22
24
26
28
30

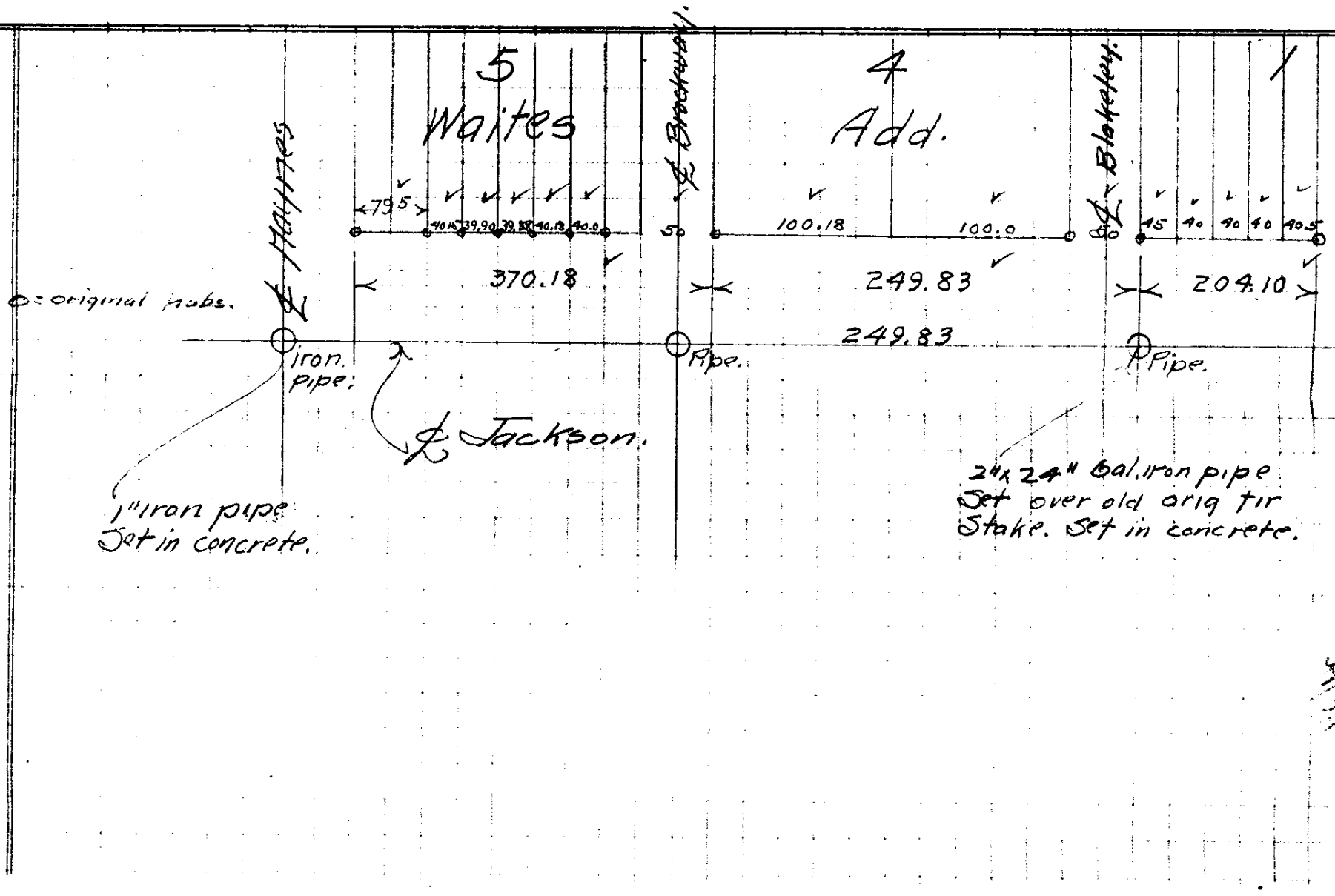
DISTANCES ALONG S. JACKSON ST.

2
4
6
8
10
12
14
16
18
20
22
24
26
28
30

John C. Moore Corporation, Rochester, N. Y. Binder and holes in leaves, each Patented 1906.



Quadrille Ruled Form.



1" iron pipe
Set in concrete.

24x24" Gal. iron pipe
Set over old orig fir
Stake. Set in concrete.

S. JACKSON

S. Brackway

Blakeley

5
Waites

4
Add.

79.5
40.5 39.90 39.88 40.18 40.0

100.18 100.0
15 40 40 40 40.5

370.18

249.83

204.10

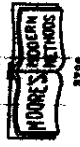
249.83

iron pipe

Pipe

Pipe

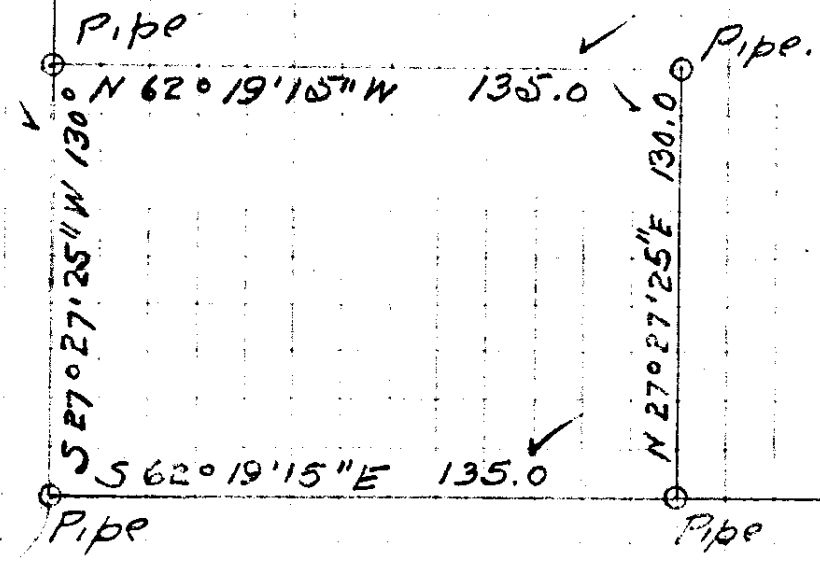
S. Jackson



John C. Moore Corporation, Rochester, N. Y. Binder and holes in leaves, each Patented 1906.
Quadrille Ruled Form.

Federal Post-Office Site. Dps as sur.
Germond.

Stephens St.



Cass St.

SW Cor
BK 37

2
4
6
8
10
12
14
16
18
20
22
24
26
28
30

Ties for St 1701. Fullerton & Miller St.

John C. Moore Corporation, Rochester, N. Y. Binder and holes in leaves, each Patented 1906.



Hicks
4-27-11

Miller St.

Fullerton St.

iron pin.

28.4

27.7

nail in
tel pole.

BM Nail in light pole.

Pin set by Hartong.

E W

N

S

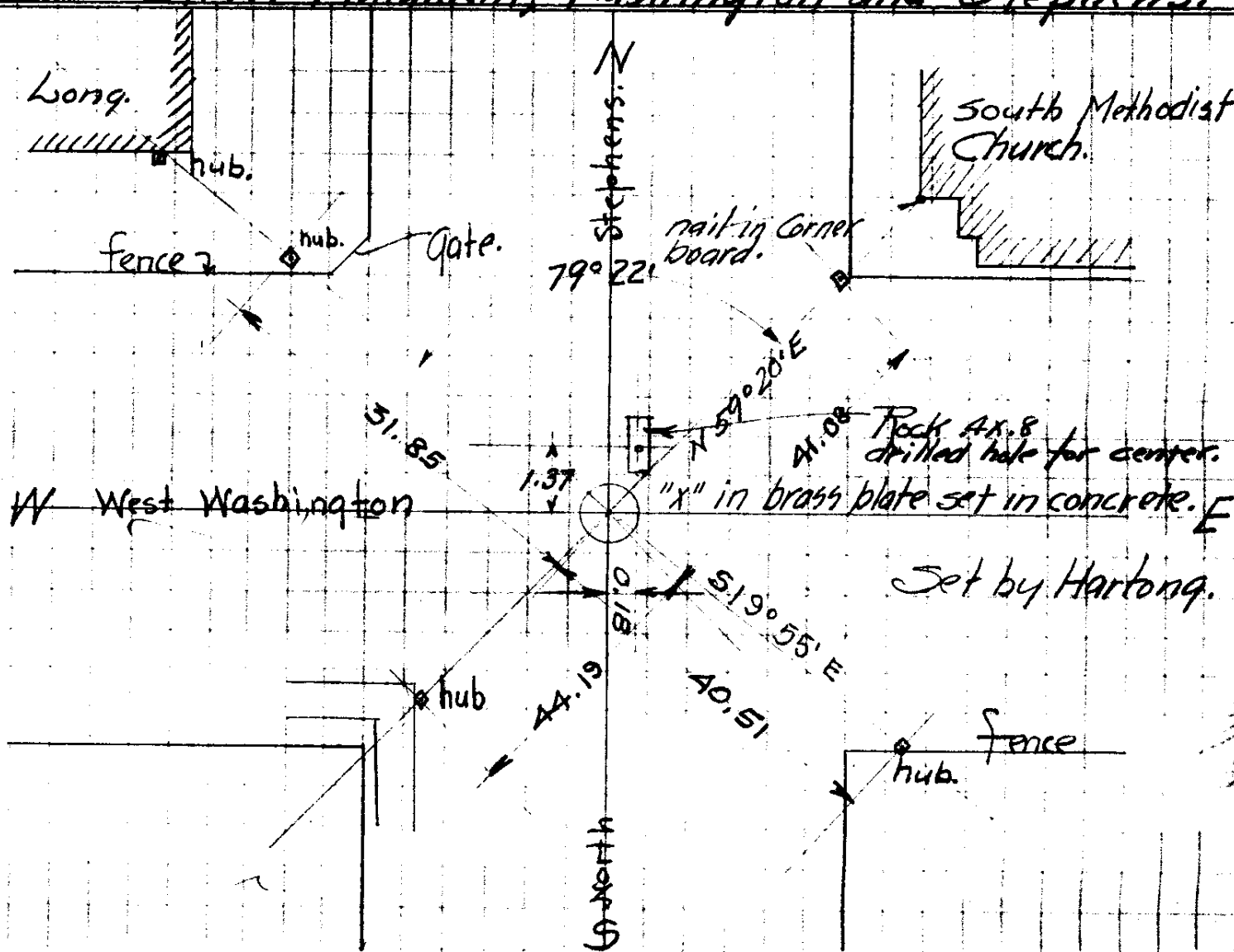
2
4
6
8
10
12
14
16
18
20
22
24
26
28
30

Ties to Street Monument, Washington and Stephens.

John C. Moore Corporation, Rochester, N. Y. Binder and holes in leaves, each Patented 1906.



Ties by
Hicks
Cole
Hughes.
6/11-11

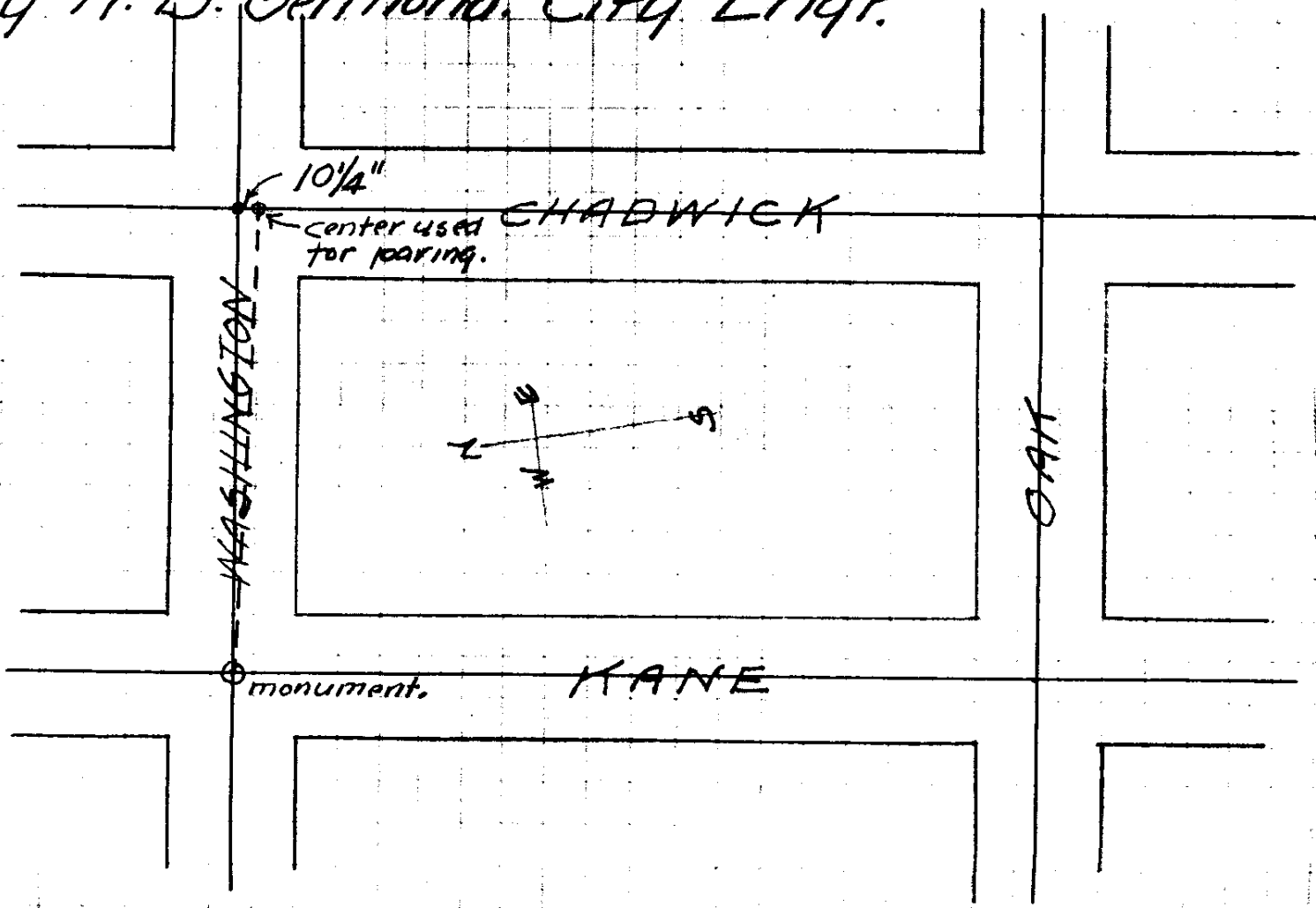


2
4
6
8
10
12
14
16
18
20
22
24
26
28
30

John C. Moore Corporation, Rochester, N. Y. Binder and holes in leaves, each Patented 1906.

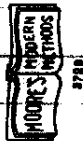


Sketch showing change in $\frac{1}{2}$ East Washington.
by M. B. Germond, City Engr.



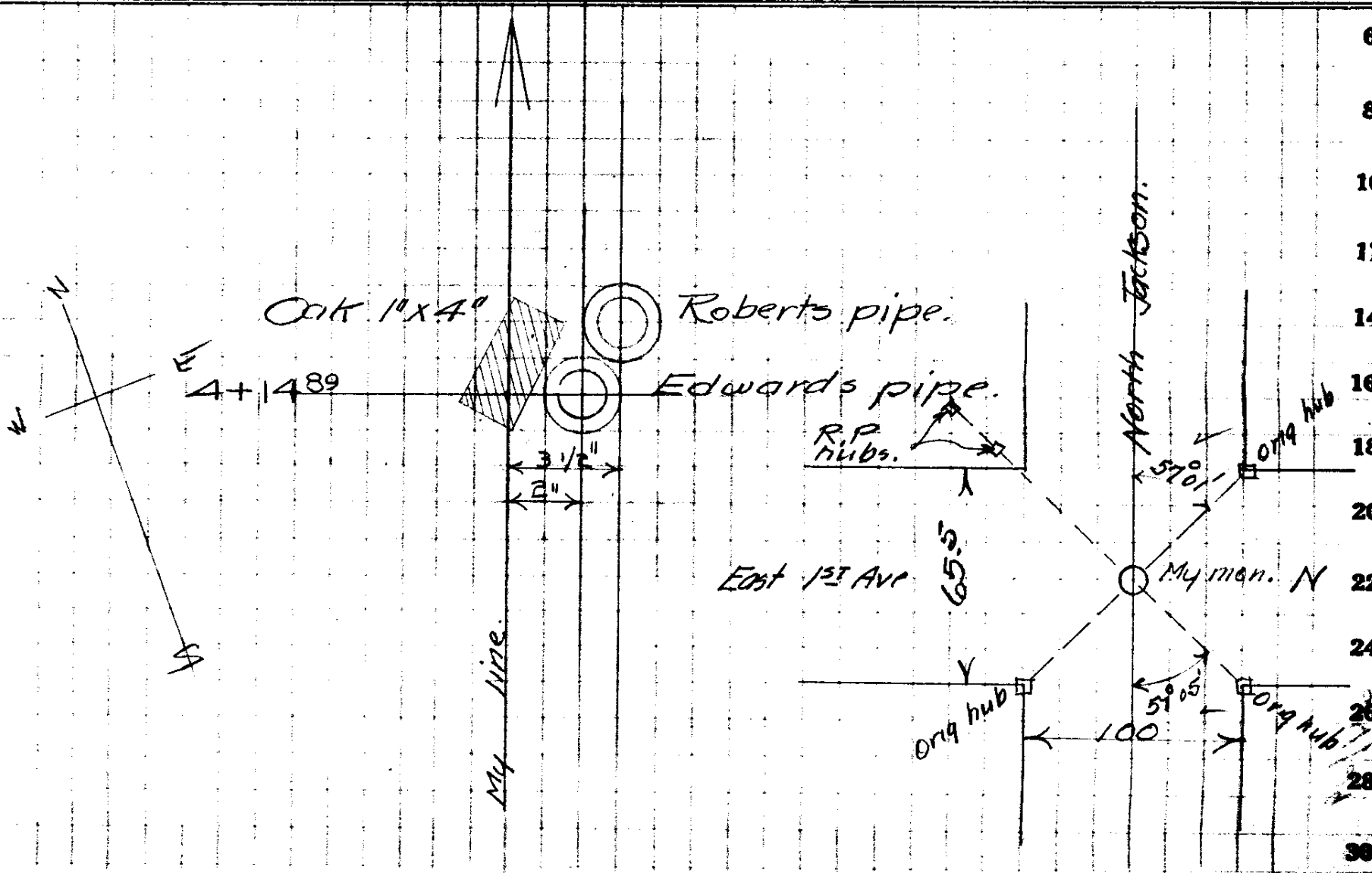
2
4
6
8
10
12
14
16
18
20
22
24
26
28
30

Ties to Street Mon. N Jackson & E 1st St N.



John C. Moore Corporation, Rochester, N. Y. Binder and holes in leaves, each Patented 1906.

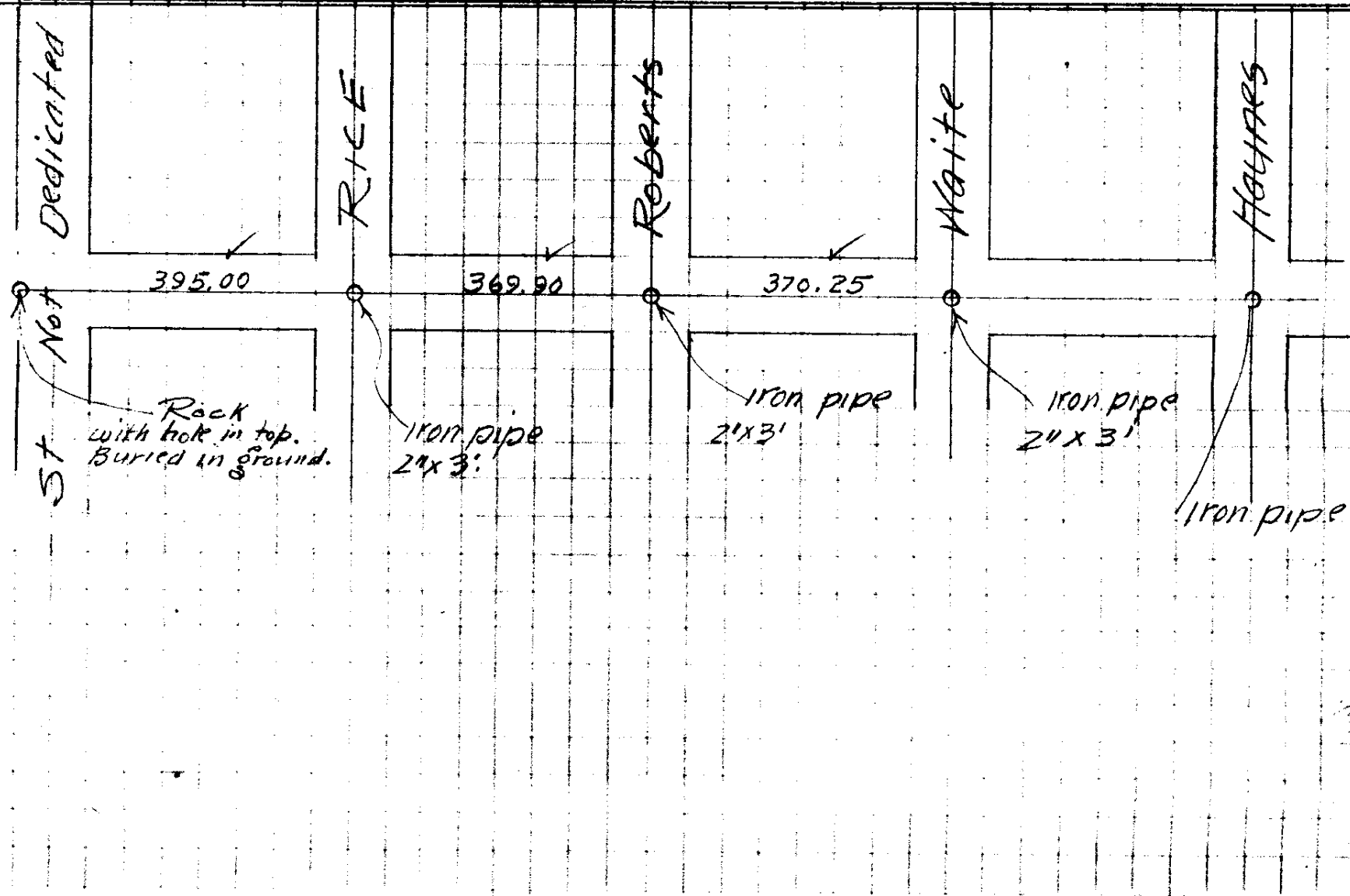
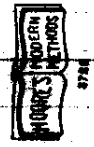
Quadrille Ruled Form.



2
4
6
8
10
12
14
16
18
20
22
24
26
28
30

DISTANCES ALONG S. JACKSON.

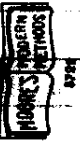
John C. Moore Corporation, Rochester, N. Y. Binder and holes in leaves, each Patented 1906.



2
4
6
8
10
12
14
16
18
20
22
24
26
28
30

MEASUREMENTS IN WINCHESTER ST

2
4
6
8
10
12
14
16
18
20
22
24
26
28
30



John C. Moore Corporation, Rochester, N. Y. Binder and holes in leaves, each Patented 1906.
 Quadrule Ruled Form.
 Binder and holes in leaves, each Patented 1906.

