

Sat Oct 3
1936

Geo Moore Rd

O. Valley

A Boyer
N.E Richardson

80.48
70.13
10.35

T 29 - R 9 W

1/4 Cor E Side Sec 25 - 29/9

1 1/4" Pipe fr W.W.

12" Oak N 39 W 451 lks = 297

8" Ash S 77 E 2 "

25 | 30
36 | 31

2" I.P. - stump of

W.O. N 75 1/2 W 382 lks

Old BT W.O. N 75 E - 86 "

" " " S 88 W 319

1/4 Cor 25/36 - 1 1/2" I.P. -

26" Fir S 72 1/2 W 39 lks

16" " " N 7 1/2 E 60 "

2" - I.P.

26 | 25
35 | 36

6575
Jul 16

36" W.O. N 76 W 372 lks.

12" " S 88 W 319

6" " N 75 E 86 "

20" Alder S 0 - 15 E 572 lks.

1/4 Cor Bet 26

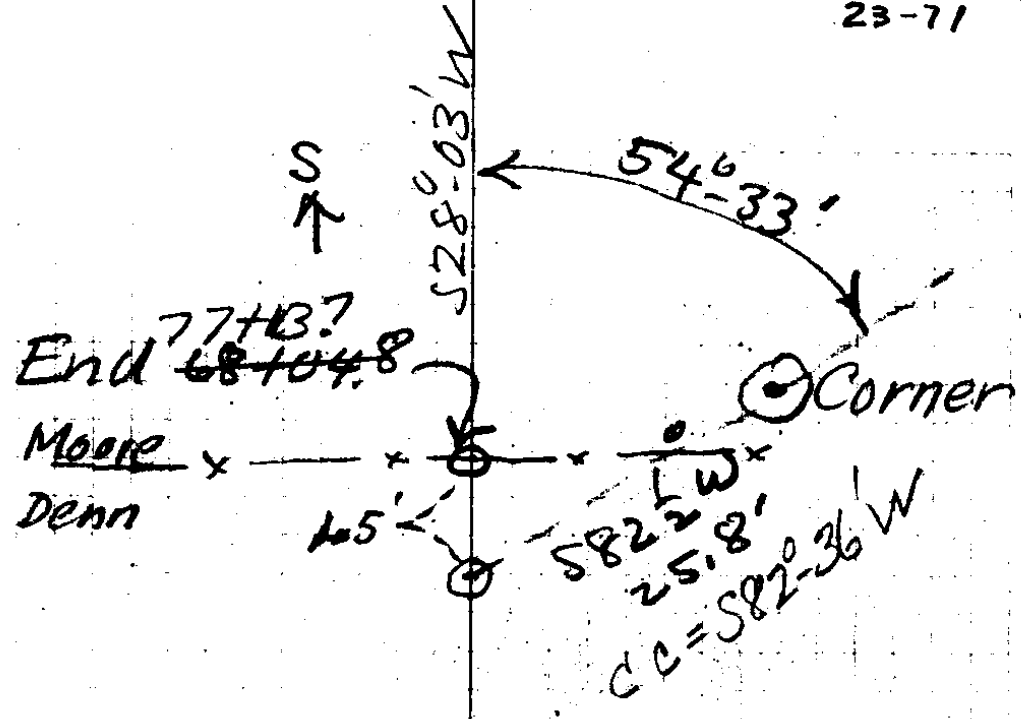
35

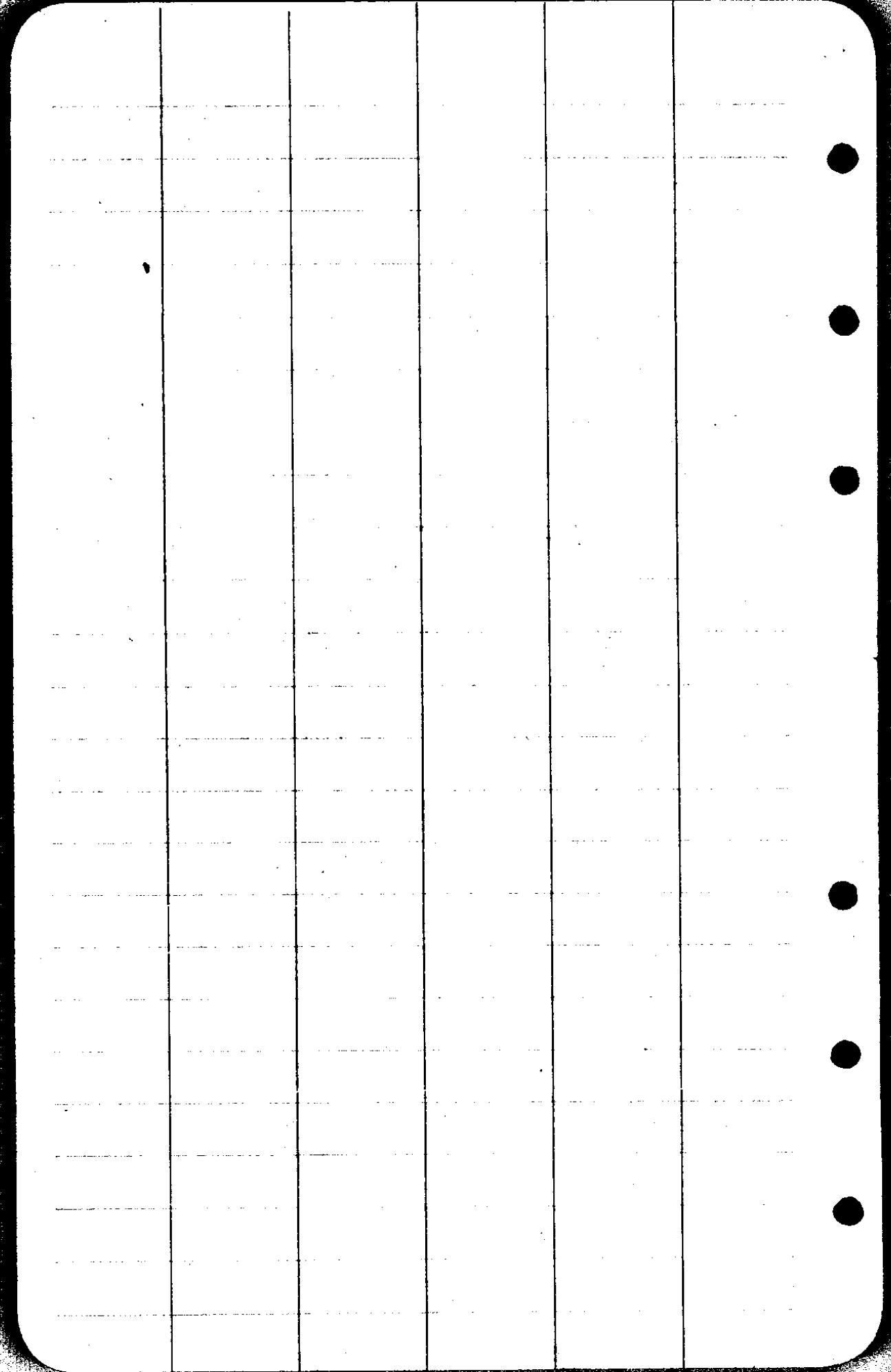
1" I.P.

10" Oak N 10 W 105'

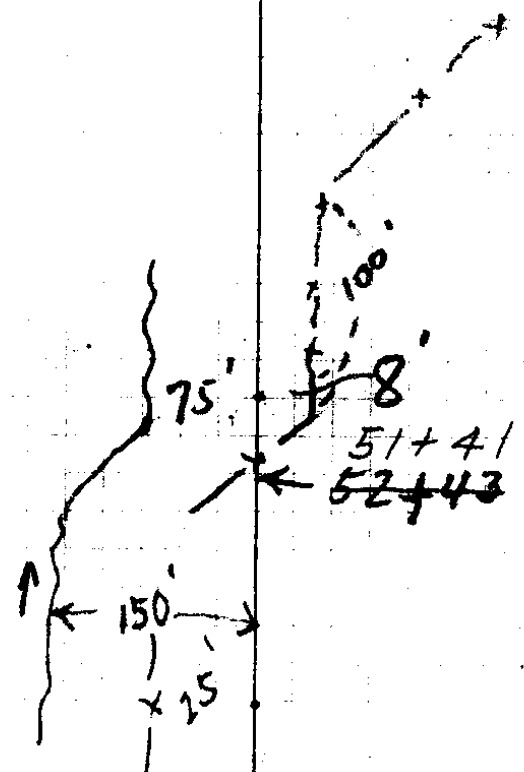
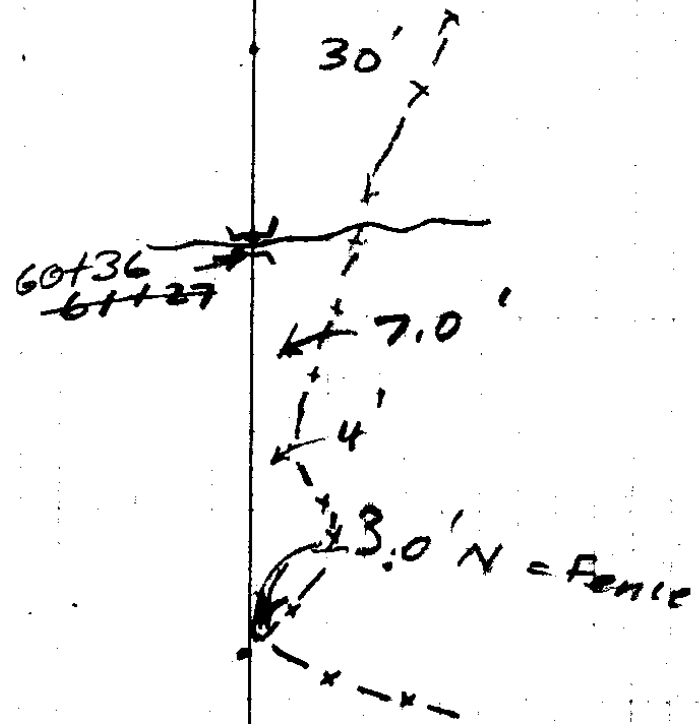
12" " " N 89 W 13'

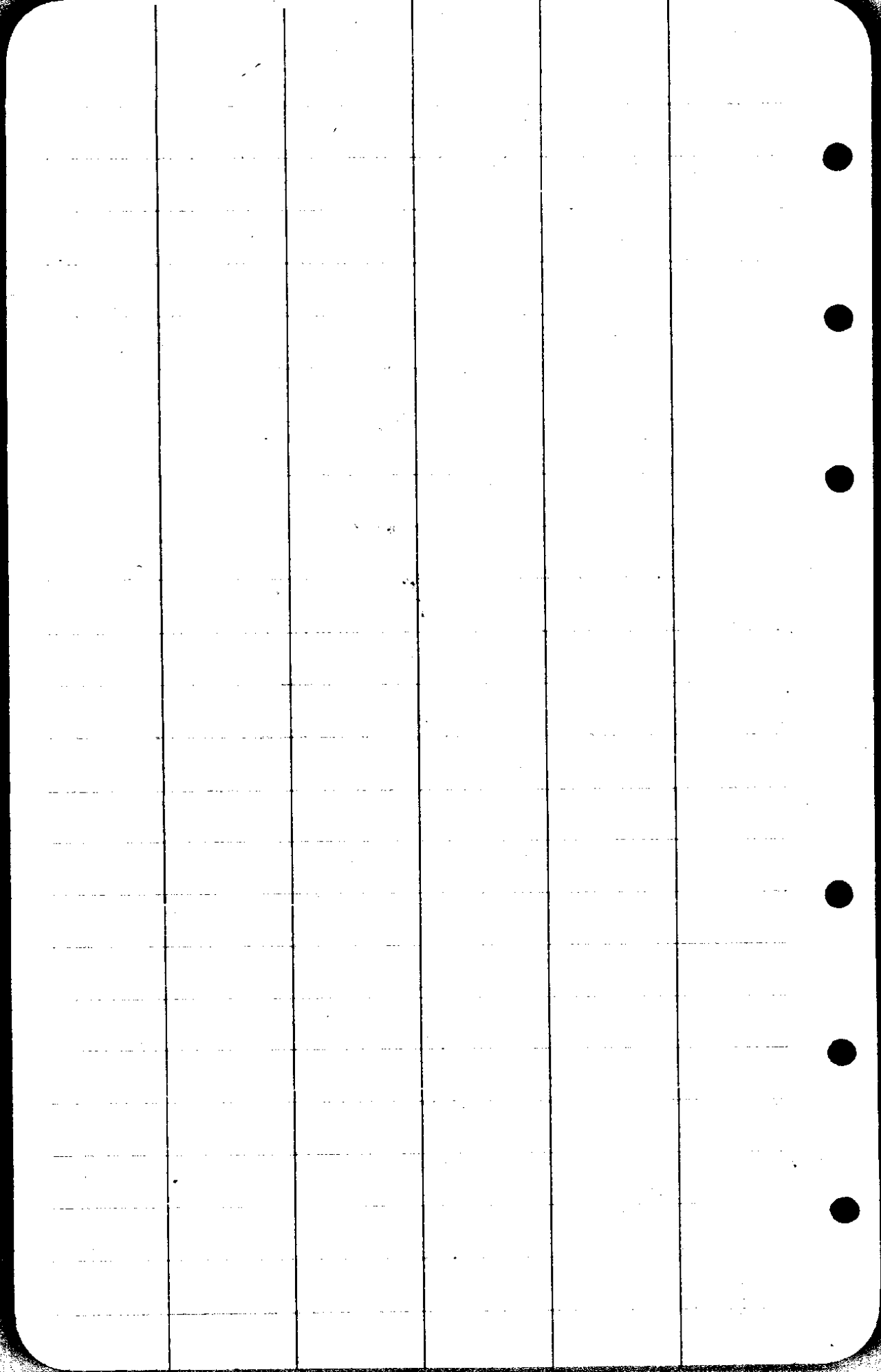
from Orig BT N 2,

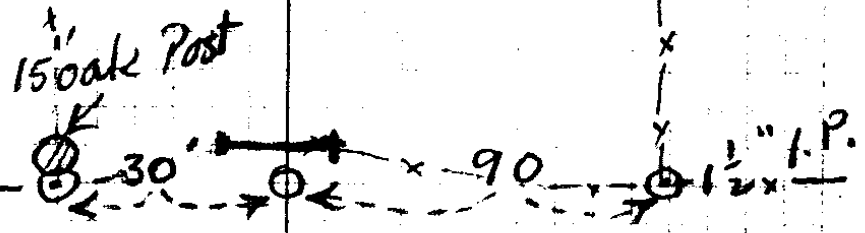
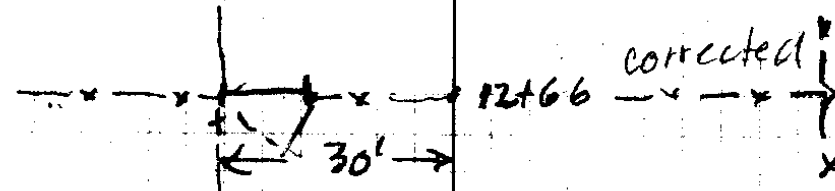
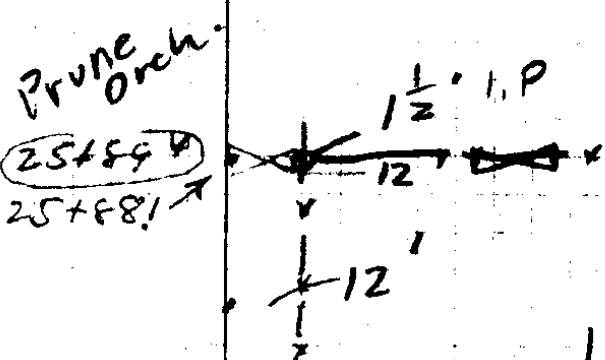
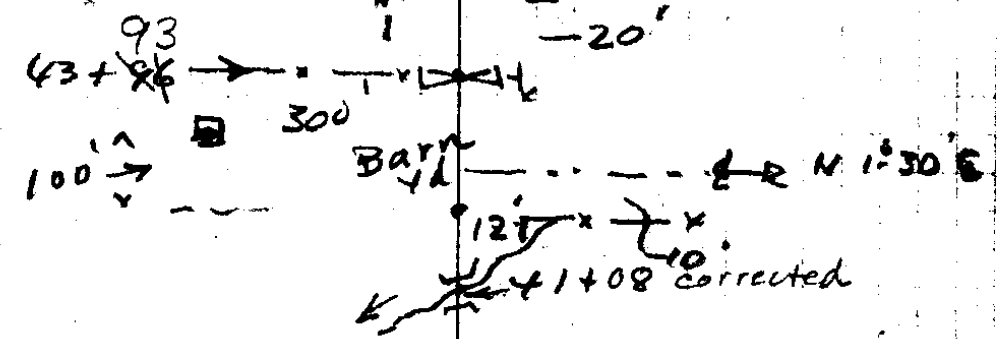
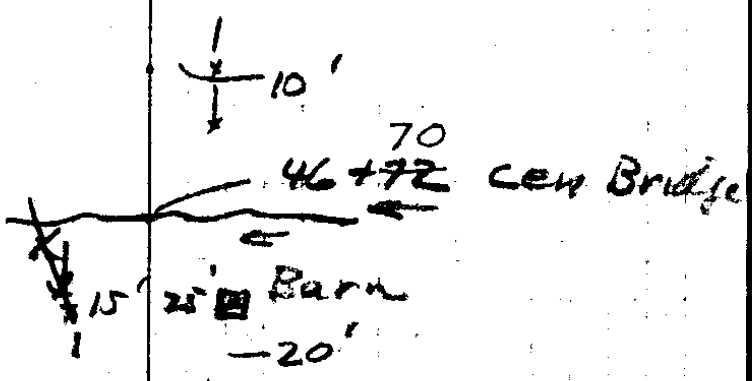
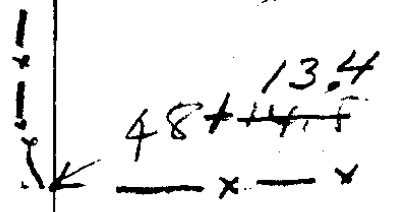




End = ~~68+04.8~~ Moore J. 23-11
77+13.7 Dehn 245







77+13.7 END

(68+048)

74+67.2 S 28° W 246.5 S 28°-03' W

(65+58.3) Δ = 46°-04' L

2 46.5

72+62.2 S 74° W 205.0 S 74°-07' W

(63+53.3) Δ = 11°-19' L

2 05.1

71+36.2 S 86° W 126.0 S 85°-26' W

(62+27.3) Δ = 30°-00' R

1 26

S 55°-30' W 377.2 S 55°-26' W

(67+59.0) Δ = 2°-42' R

3 77.2

S 53° W 408.8 S 52°-44' W

(63+50.2) Δ = 27°-14' L

4 05.8

S 79°-30' W 317.0 S 79°-58' W

(60+33.2) Δ = 46°-18' L

3 17

N 54° W 195.4 N 53°-44' W

(58+37.8) Δ = 30°-41' R

1 95.4

N 84° W 197.6 N 84°-25' W

tack in tree Root

(56+40.2) Δ = 56°-54' R

1 91.7

S 39° W 160.8 S 38°-41' W

(54+79.4) Δ = 14°-27' R

1 6.7

S 24° W 198.7 S 24°-14' W

(52+80.7) Δ = 18°-43' L

1 96.7

S 43° W 131.9 S 42°-57' W

(51+48.8) Δ = 47°-06' R

1 21.9

S 4° E 207.6 S 4°-09' E

(50+43.2) Δ = 24°-30' R

2 07.1

S 28°-39' E

451
66

2706
2706
2976.6

210 3

49+41.2 = Corrected Distance
 (55+43.2) S29°E 127.8 S28°-39'E
 48+13.4
 (48+14.5) Δ = 53°-10'L
 725.7

NOTE:-
 Stations in circles are not correct but have been corrected, as shown

47+35.7
 (47+36.8) S24°W 77.7 S24°-31'W
 77.7 Δ = 61°-18'L 21 ← corrected Dist
 S85°W 170.8 on 5°-30' S85°-49'W

45+65.5
 (45+67.8) Δ = 13°-55'L
 164 N81°W 159.7 N80°-16'W
 44+05.8
 (44.08) Δ = 82°-02'L

42+60.4
 (42+62.7) Δ = 91°-25'R
 West 1502.7 ← CC = N89°-39'W
 27+57.7 West 1502.7 ← (300' on 5° included)
 (27+59.0) Δ = 13°-26'L

1503.7
 25+88.1 N76°W 169.6 N76°-13'W
 (25+89.4) Δ = 13°-15'R

corrected dist?
 18+48.8 N89°W 739.3 N89°-28'W
 (18+50.1) Δ = 7°-48'L

N82°W 561.4 N81°-40'W 561.4'
 12+87.4 Δ = 7°-50'R

110 F West N89½W
 300 = 298.7 + 5°-15' cor = 9958

070 300 F

CS FILE FOLDER

CONTAINS

MORE

INFORMATION