

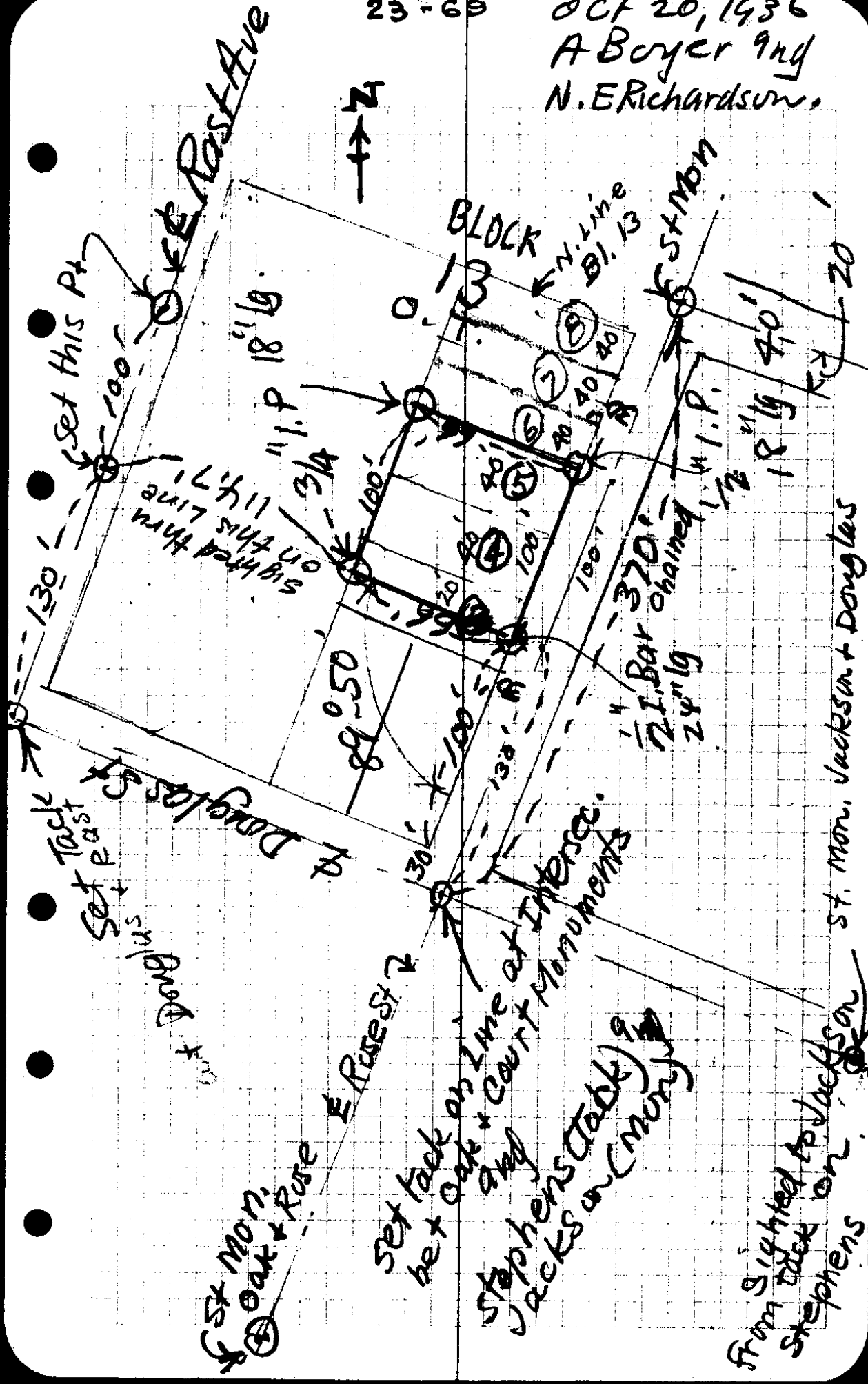
Lot Survey for
Mr. Bailey, Post Ofs. employee
who bought N² Lot 3rd
Lots 4th & 5 - Block 13 O.T.
facing on Rose St.

Oct 20, 1936

A. E. Boyer
N. E. Richardson

OCT 20, 1936
A Boyer 9nd
N. E. Richardson,

23-60



Set this Pt.

Rest Ave

N

BLOCK 13

N. Line Bl. 13

St Mon

130'

100'

Sighted thru suit line 1147'

18 1/2'

314'

100'

100'

100'

100'

100'

100'

100'

100'

100'

100'

Set tack East

Dougherty

St Mon

St Stephens

Jacks on (money)

St. Mon. Jackson + Douglas

From sighted to Jackson

St. Stephens

Set tack on line at Intense.

Set tack on line at Intense.

Set tack on line at Intense.

Set tack on line at Intense.

Set tack on line at Intense.

Set tack on line at Intense.

Set tack on line at Intense.

Set tack on line at Intense.

Set tack on line at Intense.

130'

100'

100'

100'

100'

100'

100'

100'

100'

100'

100'

100'

100'

100'

100'

100'

100'

130'

100'

100'

100'

100'

100'

100'

100'

100'

100'

100'

100'

100'

100'

100'

100'

100'

130'

100'

100'

100'

100'

100'

100'

100'

100'

100'

100'

100'

100'

100'

100'

100'

100'

130'

100'

100'

100'

100'

100'

100'

100'

100'

100'

100'

100'

100'

100'

100'

100'

100'

See Surv. Rec. Book 47, p. 21,
for details of the survey.

C. S. File No. 23/69

October 21, 1936

Mr Bailey,-

The following is a copy of the Critser deed which is for the property on the West side of the lots you are building on; the reference for the recorded deed is Volume 87 Page 29 of the County Clerk's records, to which you could refer in case you should like to check it.

Commencing at a point 100 ft North 28°E. from the junction of Douglas and Brewery or Rast Ave; thence N.28°E along the East side of Brewery St. 20 ft. thence S.62°E 97 ft. to beginning (the following is of interest because it gives the boundaries of the Critser property in plainer words) lying on the West side of Lots 4 & 5, Block 13- being in width, North and South along said Lots 4 & 5, 80 ft, the same as said lots and in depth extending from said lots to the alley or street that runs to the brewery, a distance of 95 ft. Said tract being bounded on the East by the West line of said lots 4 and 5 and on the West by the street or alley running to the brewery, being 80 ft in width North and South.

A. Boyer