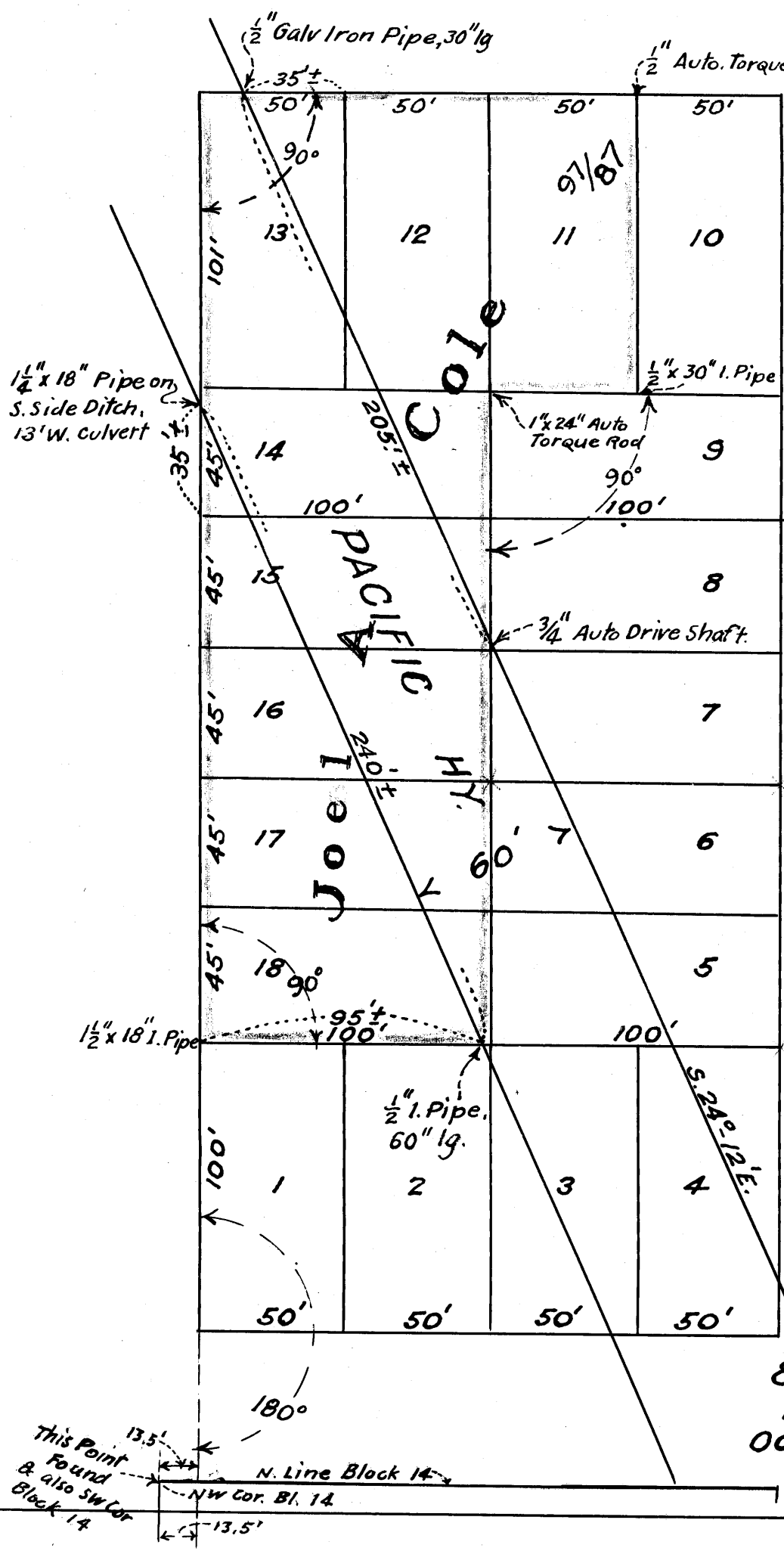


3/2



All points shown as set were
lined in ²ny measured in
Apr. 6, 1938
A.B.

JOEL COLE SURVEY

See also V.23-E.72

**BLOCK 1, THOMAS SUB.
FRUITVALE ADD. TO
ROSEBURG, ORE.
& PACIFIC HY THRU
LOTS 12 to 18 incl.
Oct. 1936 scale, 1"=50'
A. Boyer, Dep. Co. Sur**