

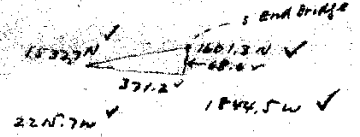


Tie from  
Diversion Point  
over to S. End  
Bridge

Diversion = { 1532.7' N  
2215.7' W }  
from  
S. Umpawa R.  
L. Bank.  
Same Loen as Diversion  
for old Pumping Unit of  
State Soldiers Home.

Tie  
N 53° 20' W  
2644'

| N        | W        |
|----------|----------|
| 3423     | 48.79    |
| 2561     | 4.49     |
| 5984     | 53.28    |
| 1532.7 N | 2215.7 W |
| 5984     | 53.3     |
| 1472.9 N | 2162.4 W |
| 128.4 N  | 317.9 E  |
| 1601.3   | 1844.5 W |



27.0 SWS Det  
SW Cor + NW Cor DLC 56

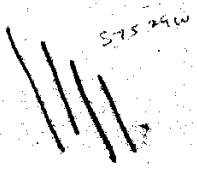
DLC Cor. SW Cor  
Jeremiah Huntley  
DLC 56 T278 R6W W  
on Military Ave 9th  
Umpawa Ave

Scale  
1" = 500'

Veterans Facility  
Tie for Diversion  
to Accompany App.  
for Water Permit  
to State Eng'r

Sept 2-3, 1936

FILE 58 DRAWER 23



NSP 57.7 W  
NSP 58.5 W

USE THIS

60' ± NEW 3" BRIDGE

S End Bridge on 6

N 79° 32' E

N 71° 23' E

NSP 55.5 W  
575.24 W  
2375'

N 71° 34' W

NSP 58.2 W

App. for Water Right -  
Veterans Facility.

| Sta | $\Delta$ Angle<br>m.e. | Dist | C.C. |
|-----|------------------------|------|------|
|-----|------------------------|------|------|

DIVERSION

6' W of  
Pumph's  
sw/cw

N12°W 26.0'

$\Delta$  45°R

N55°W 59.6'

N9°-57'W ✓

→  
55' S of  
Pumph's.

$\Delta$  23°-45' L

N32°W 903.1'

N54°-57'W ✓

on Lawn  
40' E Main Bldg

$\Delta$  = 19°-43' Rt

N31°-12'W ✓

Entrance  
to Stat Hm

N51°W 279.6'

$\Delta$  53°-36' R

S76°W 237.8'

N50-55W ✓

opp. (N. of)  
Pump at  
store

$\Delta$  = 21°-37' L

S89°-55'W 1269.9'

S75°-29'W

Cor Harvard  
9th  
Umpqua

$\Delta$  84°-36' L

N82°-54'W

N5°-35'W 427'

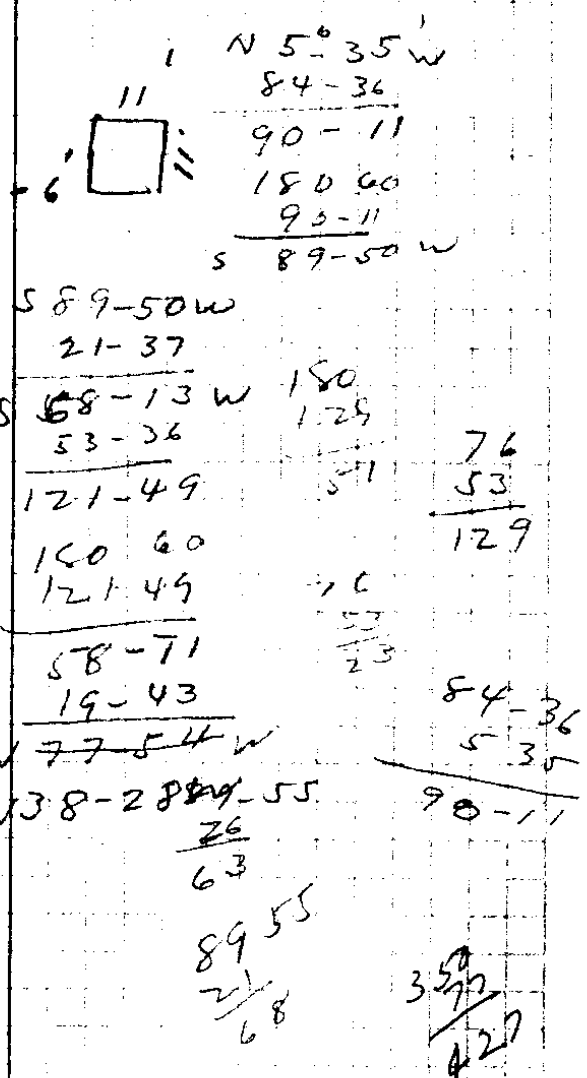
N12°42'E

o + o = DLC Cor - Military Ave + Umpqua  
HARRISON

Sept 2, 1936

23-58

Boyer &  
Richardson

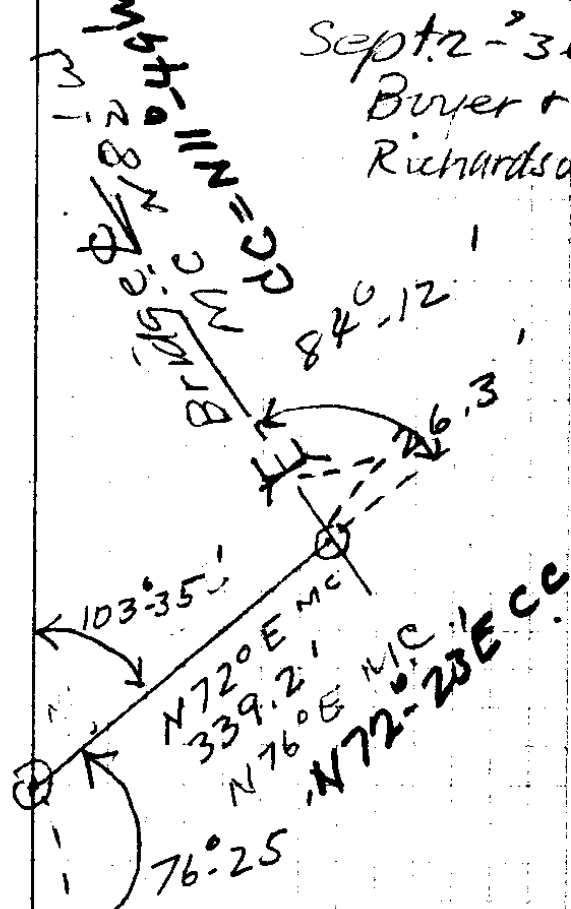


Sept 2-'36  
 Buyer &  
 Richardson

N 31° 12' W C.C.

N 31° 30' W

903.1'



|         |        |
|---------|--------|
|         | 180    |
|         | 74 25  |
|         | <hr/>  |
| 84-12   | 103-35 |
| 72      | 180    |
| <hr/>   | <hr/>  |
| 12° 12' | 177-35 |

|       |        |
|-------|--------|
| 84    | 103-35 |
| 76    | 31-80  |
| <hr/> | <hr/>  |
| 8     | 72     |