

1/4 Cor bet 26 + 27

Set from O.B.T Laurel S55°E 6.6'

Set 1 1/2" x 20" I. Bar for cor

12" Fir S 55°W 4.3'

18" S 33-30 E 29.7'

Sec Cor	22	23
	27	26

Set Auto Housing

16" Fir S 68°W 47.7'

16" Red Fir S 13 1/2° E 48.0'

16" " " N 30 1/2° W 55.8'

36" Cedar N 39 1/4° E 81.3'

Apr May Aug 1935

Stuer

F. Cain

Bert L

Jack Morris

Thackeray

Mag Brg - 22°-02' E

N 0°-16' W → sec cor

N 0°-47' W →

2524.5

27 ⊙ 26

4 | 2524.5

 631.15

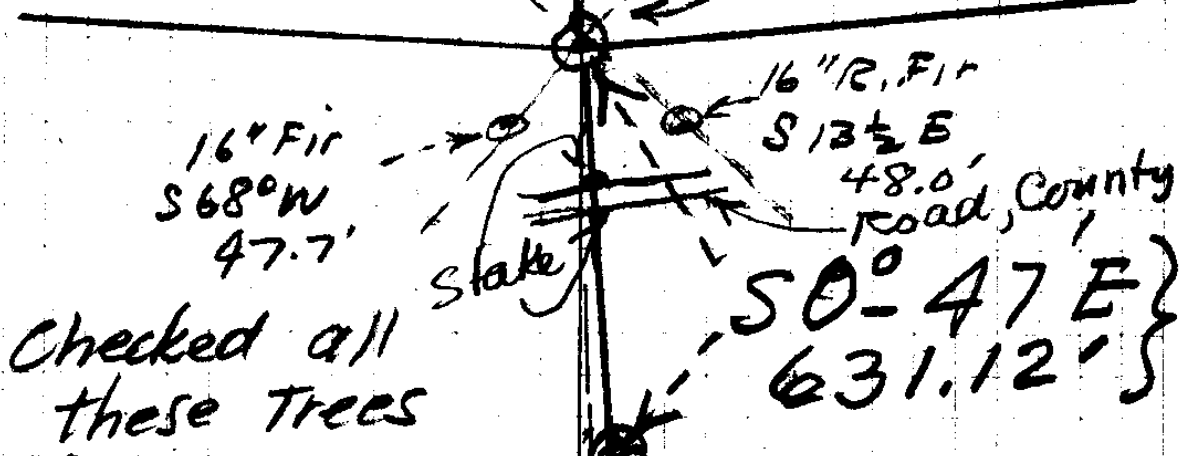
23-55

NW⁴NW⁴NW⁴ Sec 26
T 28 S R 4 W.

AUG 11, 1936
Boyer T + R Chain
Hd Chain S. I. Thackery
Axe = Cox.

For
S. I. Thackery N 30 1/2° W
55.8'
16" Fir

36" Cedar
N 39 1/4° E
81.2'



Checked all
these trees
Using Mag Dec
22°-02' W

See Page 23
Vol 4
for these
figures

See Vol 4
Page
25

Stake at
SW Cor
NW⁴NW⁴NW⁴
Set by
Mr Cox
who bought
from S. I.
Thackery
Note:
there is a
new line
18' west

← Creek.

16" R. Fir
S 13 1/2° E
48.0'
Road, County

50°-47 E }
631.12' }

NO - 47 W (Mag Dec 22° 02')

2524.574 = 631.12

Sec 27

Sec 26
4 Corner