

78  
4  
2  
3  
1  
6  
9

1  
2  
2  
2  
6

9  
5  
6  
9  
1  
6

FL = 99.5  
 $\frac{3.9}{95.6} = \text{Best cut}$

1470  
 $\frac{4.3}{95.7} = 4.4$

152-11  
 $\frac{23.3}{176-2}$

0.3, 82  
 $\frac{3-15}{4-4}$

11-1-9  
 $\frac{18}{11-9}$

142-11  
 $\frac{31}{142-11}$

278  
 $\frac{626}{15-2}$   
 $\frac{20-2$

55  
 $\frac{7}{62 \text{ mi}}$

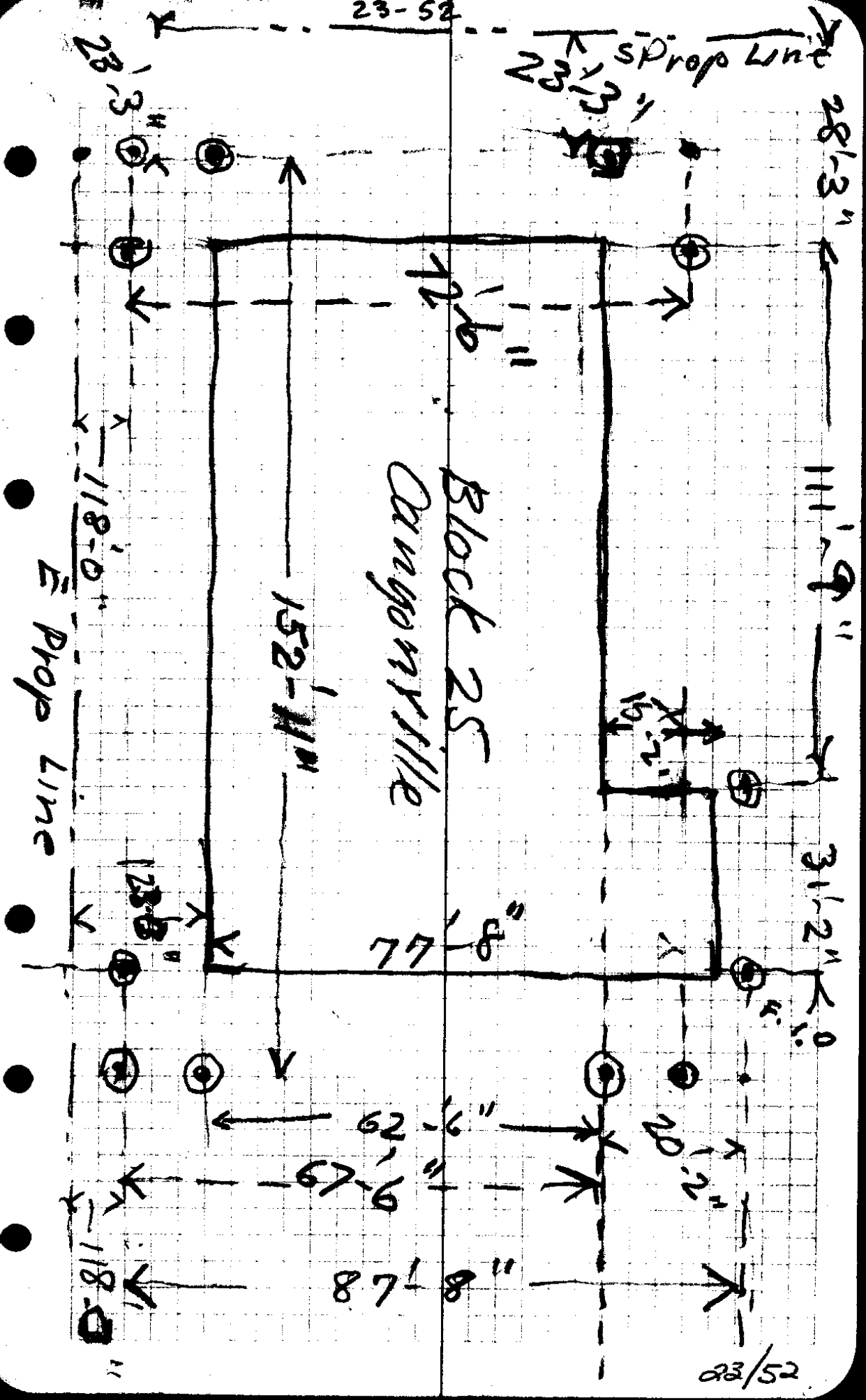
34-2  
 $\frac{16}{34-2}$

142-11  
 $\frac{31}{142-11}$

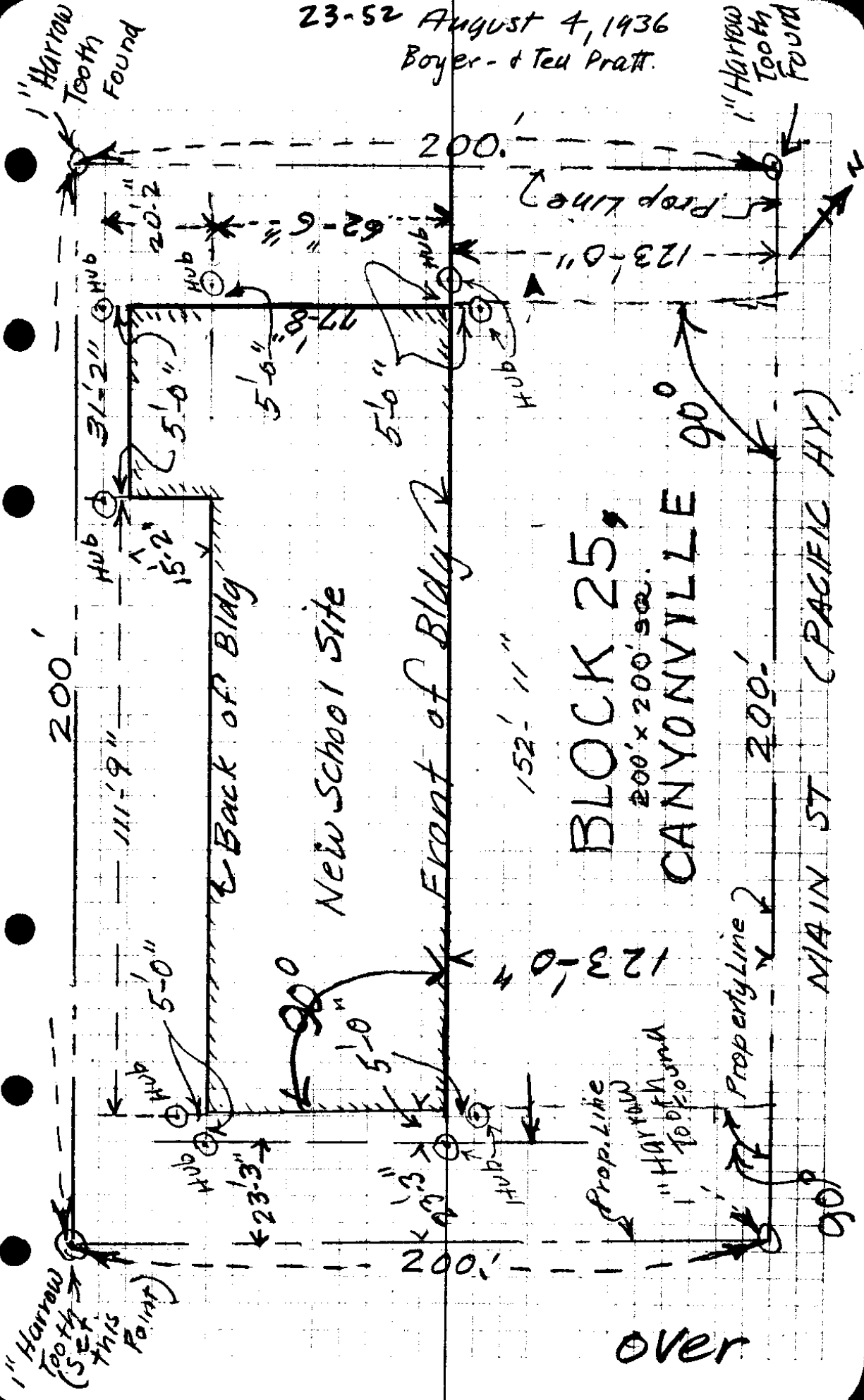
278  
 $\frac{626}{15-2}$   
 $\frac{20-2$

~~Grade = 95.6~~

Sta	+5	7.1	-5	Elev	Fire Plug
NW cor	1.10	101.1		100	BM
			6.5	94.6	F. 1.0
			8.1	93.	F 2.6
			3.6	97.5	C 1-11"
			6.1	95.	F 0.6



23-52 August 4, 1936  
Boyer - & Ted Pratt.



1" Harrow  
Tooth  
(Set  
this  
Point)

1" Harrow  
Tooth  
Found

over

200'

111'-9"

Hub

Hub

Hub

Hub

Hub

Hub

Back of Bldg

New School Site

Front of Bldg

152'-11"

BLOCK 25,  
200' x 200' sq.  
CANYONVILLE

Prop. Line

1" Harrow  
Tooth  
Found

200'

MAIN ST  
(PACIFIC HWY.)

200'

123'-0"

200'

Prop. Line

90°

90°

90°

Sta	+S	H I	-S	Elev.	Fire Plug
	GRADE			100.00	B.M.
	1.1	101.1			
	NW Cor Bldg.		6.5	94.6	F. 1.0
	NE " "		8.1	93.0	F. 26
	SW Cor "		3.6	97.5	C 1'-11"
	SE " "		6.1	95.0	F 0.6

Elev. 95.6

School Dist

B1. 25

" 26

9/11

96/55

B1-27 kept NE<sup>2</sup> Lots  
1, 2, 3, 4

± Vocated St (E<sup>1</sup>/<sub>2</sub>)

bet 27/28

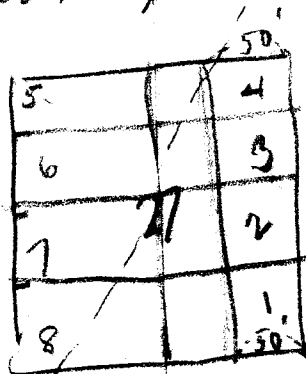
Grapel M

Lots 1 to 7

B1 24

Lots - 200 square

No Alleg.



Odd Fellows Lodge

Bag wt Pt 20 Ch St  
79 LKS. E. from NW cor  
of Rachall Clerks PLC

at a pt. S from which  
a pine 4" dia brs

S 26° W 38 LKS then  
W 316<sup>1</sup>/<sub>2</sub> LKS = post 4" dia No. 2  
Frwn 527<sup>1</sup>/<sub>2</sub> E 29 LKS

S 316<sup>1</sup>/<sub>2</sub> " = " 3-5" Pine N45E  
19 LKS

E 316<sup>1</sup>/<sub>2</sub> " = " 4-6" " N70° W  
13 LKS

N 316<sup>1</sup>/<sub>2</sub> " = Bag

WW Willis to Sch Dist No 8

All block 27 kept NE<sup>1</sup>/<sub>2</sub> Lots

1, 2, 3, 4

30/5 27-28-33+ 34 Set 4x4 - W.O Post

8" B.O. N 18<sup>1</sup>/<sub>2</sub> - 26 LKS

8" Fir N 57° W - 49 "

6" Laurel N 80<sup>1</sup>/<sub>2</sub>° W 55 L

6" " S 69<sup>1</sup>/<sub>2</sub>° E 35 "

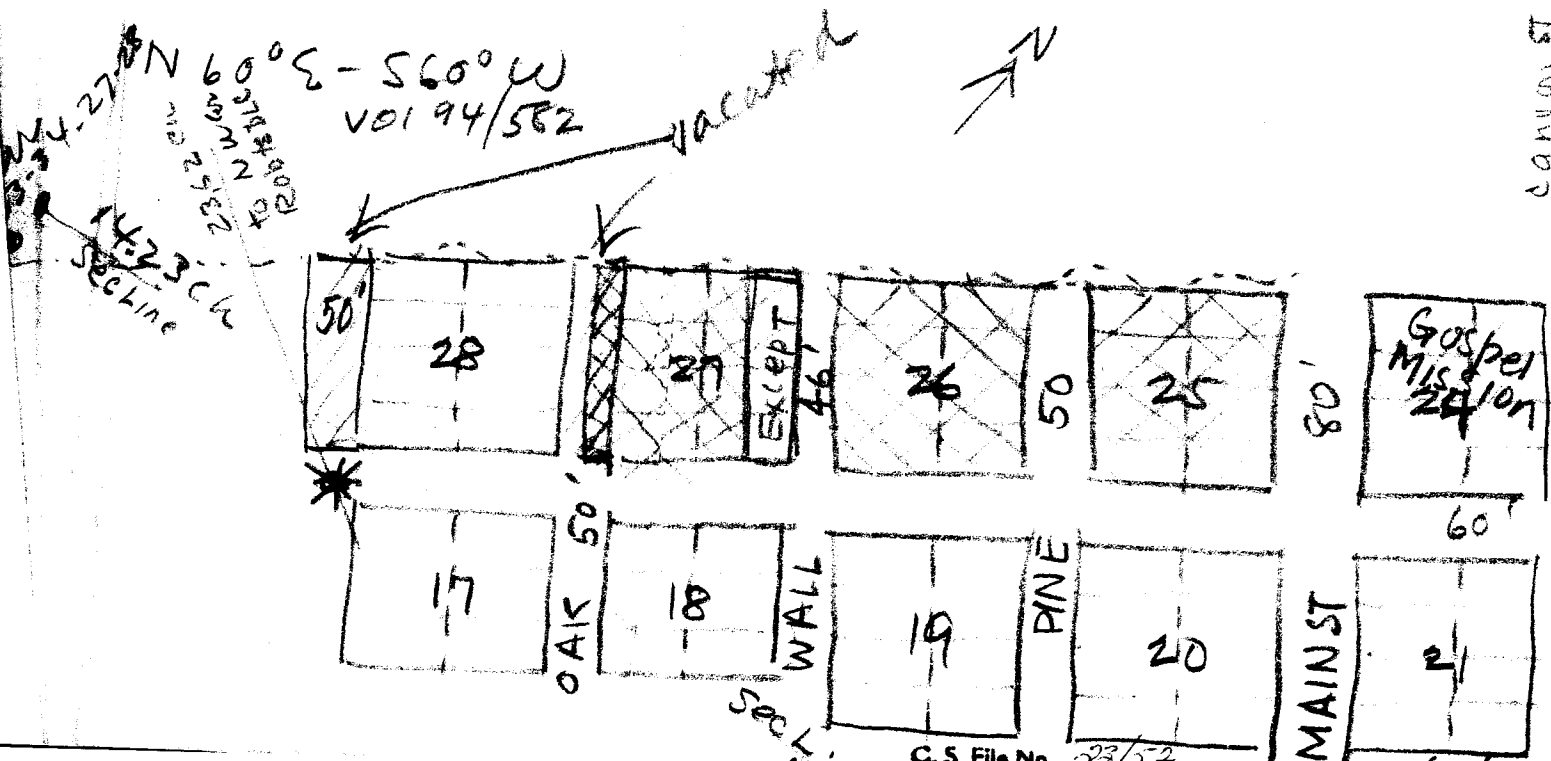
19w  
July 13

Qualization Mtg  
6-12 Aug

Beg at NW cor Joseph Roberts DLC S74 Sec  
 27+34 30/5 N S30°30' E 23.62 chs  
 Set a large stake marked with a cross  
 & a drilled hole for beginning pt +  
 which is 14.3 ch E + 34 lks S of  
 cor to 27, 28, 33+34 from this pt, as the  
 middle pt indications of 5th + June 86  
~~proceed~~ large sand per accompanying  
 plat + set stakes at 1st, 3rd E with  
 streets intersecting them

Main St 80' wd  
 wall " 46'  
 all others 50' "

Streets are N 30° W or S 30° E



23/10/08