

To accompany F.A. Thomas' Application for
 Permit to appropriate Public Water from
 LOWER STONY BROOK CK. IN
 LOT 1, SEC. 4, T.22S; R.8W; W.M.

This is to certify that the annexed map was made from
 notes taken from field survey made by me on July 27, 1936 and
 that it represents the works described in accompanying appli-
 cation, together with location of streams in the immediate
 vicinity.

Arthur Boyer

Registered Prof. Engineer Lic 1581 5/5/33

W. Billick to F A Thomas

Sec A - T22S / R8W

JULY 27 - 1936

Boyer

9.59
<u>40</u>
38360

T22 S R & W

F. A. Thomas

When computed, this tie is N67°-17'W
3342.07' from NW Cor DLC 50 to
SE Cor. of Tract

NW Cor DLC. 50 $\frac{22}{8}$ = Tie
N 72°-16' W 38.4'

Pt $\Delta = 72^{\circ}-51' R$

$36^{\circ} W$
S 33° W 111.2'

S 34°-53' W

Pt $\Delta = 70^{\circ}-05' R$

S 35° E, 776.0'

S 35°-12' E ✓

Pt $\Delta = 19^{\circ}-44' R$

S 55° E (661.0' + 405') = 707.5' ✓
S 54°-56' E

Pt $\Delta = 15^{\circ}-34' R$

S 70°-30' E, 574' ✓

S 70°-29' E CC

Pt $\Delta = 14^{\circ}-42' R$

S 84 $\frac{1}{2}$ ° E 693.- S 85-11 E CC

Pt $\Delta = 11^{\circ}-34' R$

N 83° E 1930' ? N 83-15 E CC

Pt $\Delta = 98^{\circ}-12' L$

81°-45' L

S 15° E 20.3'

O+O = SE Cor Tract

3/4" shaft $t=18''$

40' W.

4 R/W

10'

~~S 75° W~~

23'

0-23'

⊙

~~S 70° W~~

S 71° W

S 75° W - 100.0'

1/2" 1. Bar
15" g

I.P.

S 75° W

50'

40' N

~~S 70° W~~

~~S 71° W~~

S 150° E

3.0'

98°-17'

81°-45'

180-02'

$$19 + 64 = 590$$

$$23 + 63 = 586$$

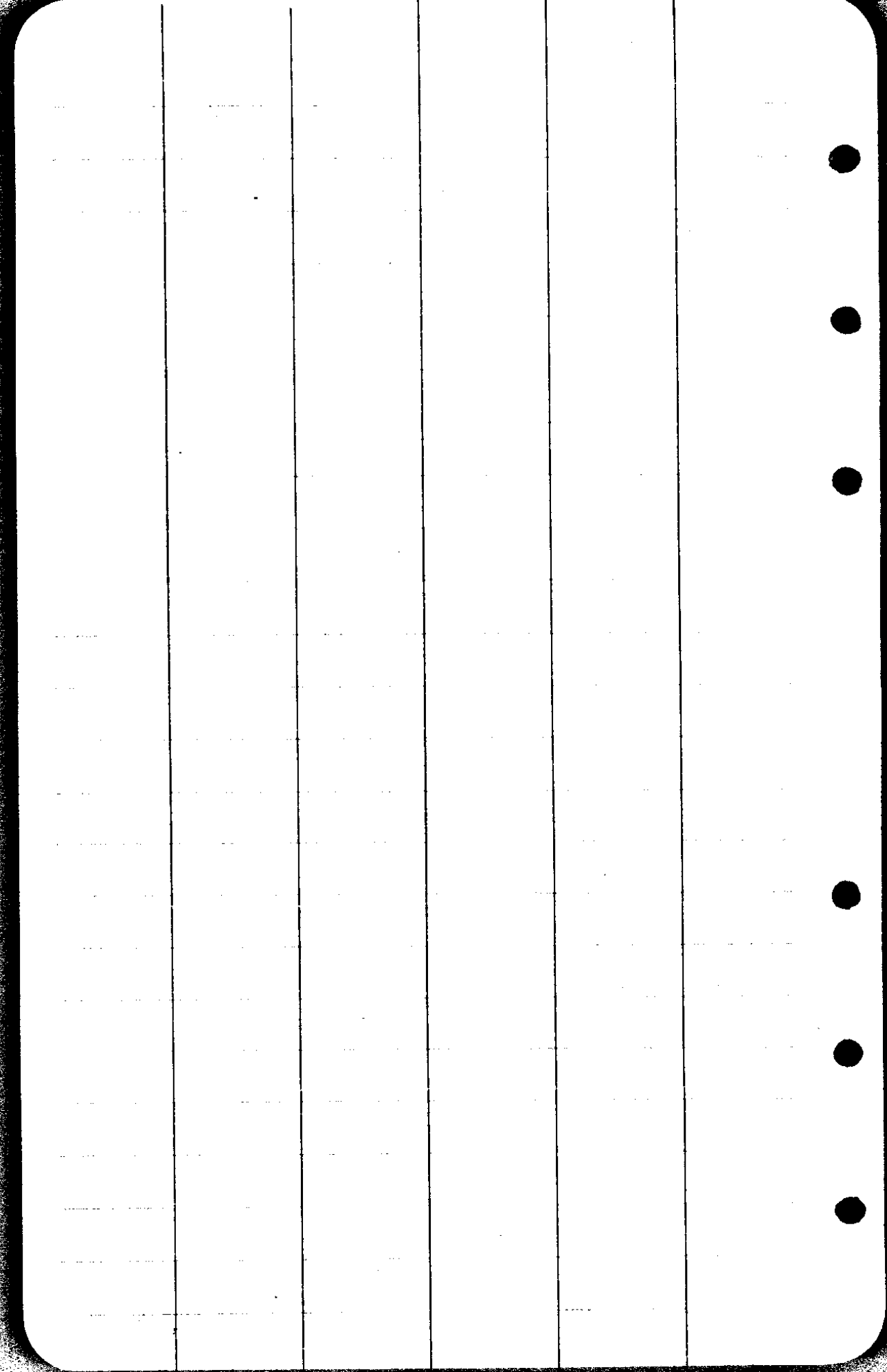
23-50 July 27, 1936

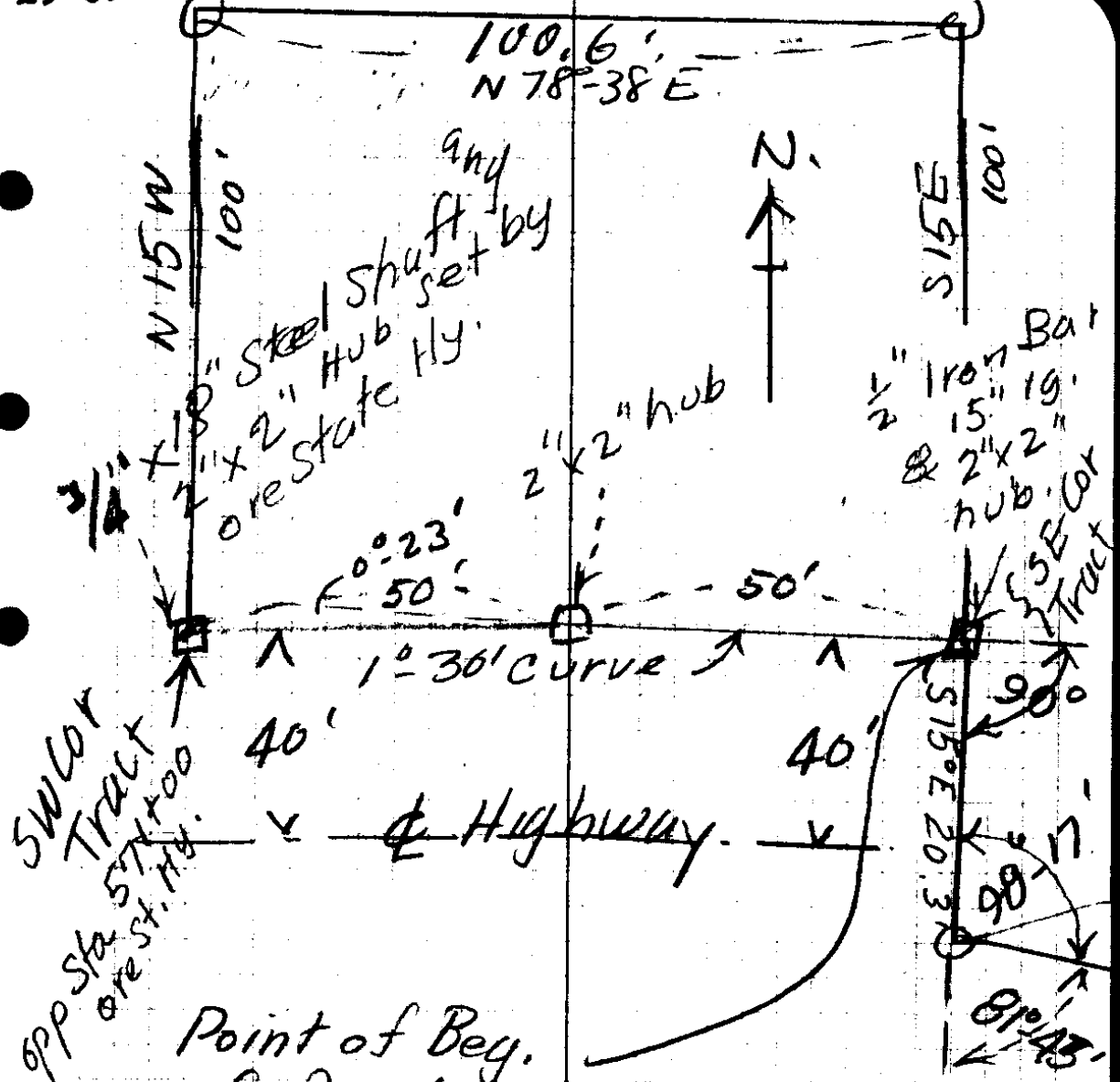
Boyer
Billick St
Thomas P.A.

930
693
574
707.5
776.6
83.9
3765.0

N83-142
11-34
94-48
150 50
\$ 85-72 2
14-42
70-30 0
15-34
54-56
55-3

S 54-56 2
19-44
35-12

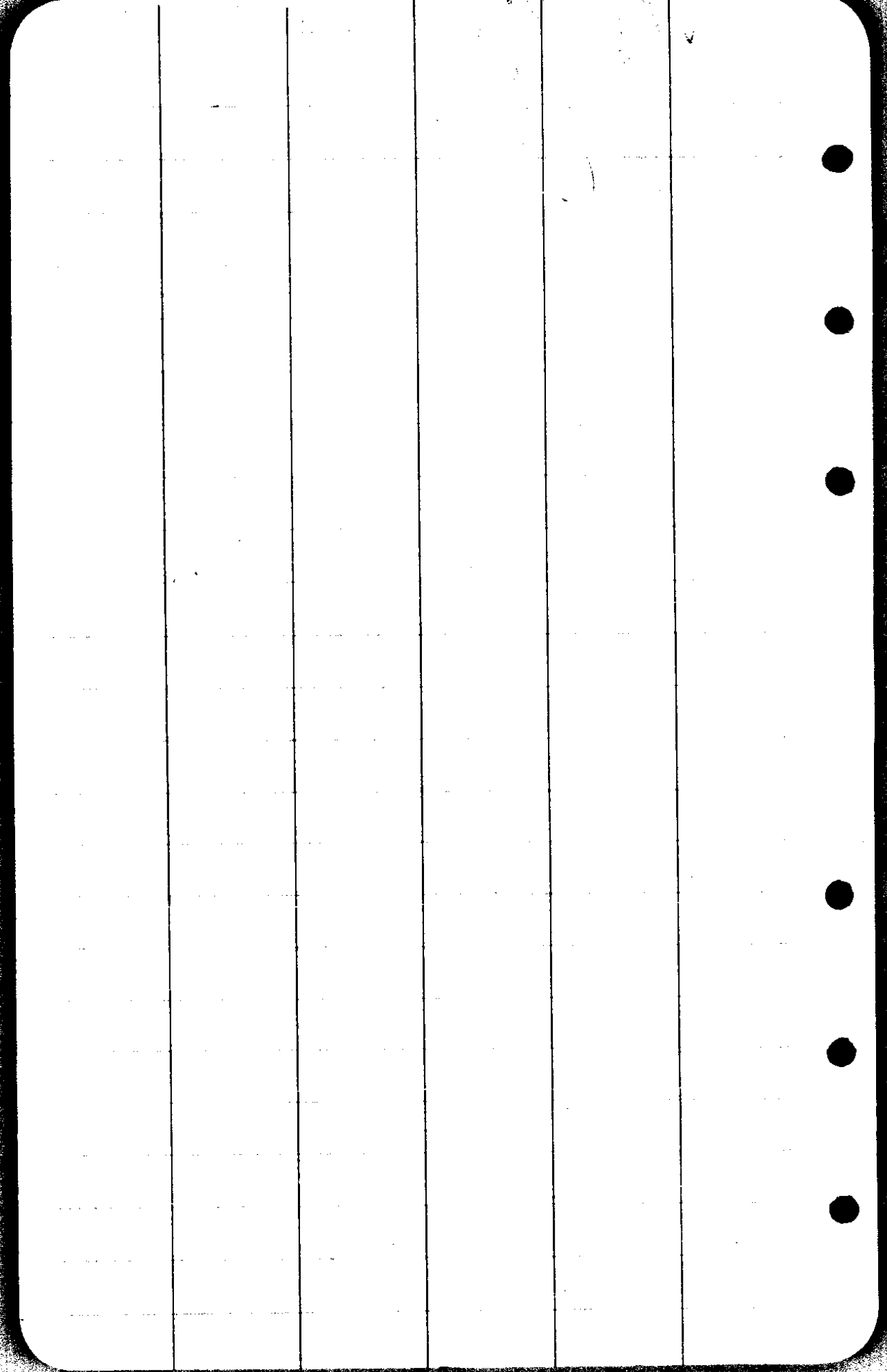




Point of Beg.
of Deed. =
0 + 0 - 40' opp
Sta 572+00

July 27, 1936

A Boyer.
W. Billick R.Ch
F. A Thomas
Hd. Ch.



CS FILE FOLDER

CONTAINS

MORE

INFORMATION