

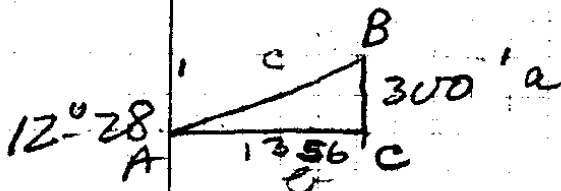
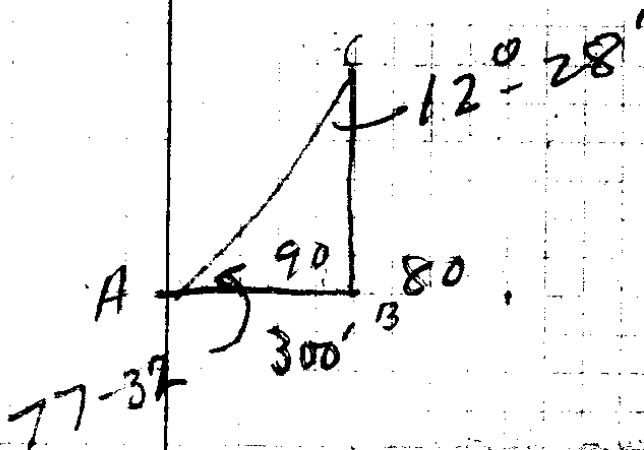
23-41

Apr 27-28-29
1936

FREDERICK C KIEHN

28-8

SEC 23



$$\tan A = \frac{a}{b}$$

4 72 (6)

22108) 300.00 (1356
 22108
 78920
 66324
 125960
 110540
 154200
 132648
 21552

1356
 20
 36

SE Cor DLC 40, 30" W.O. N60°W 62 lks
 NE " " 30" B.O S65°W 16 "

22/23
 27/26 18" Fir N78°E 29 lks.
 15" " S72°E 49 "
 x 6" " N70°W 38 "
 24" " S5°W 62 "

W.. Bet 23 & 26-

9.30 CK C. NE.
 27.65 " " " " Copied twice

23
 166
 166
 166
 166
 166

39.91 = 1/4 Cor Fr. Wh. 18" Fir N.60°W 23 lks.
 6" Laurel S55°W. 13 "

79.82 = Cor

N. bet 22 & 23

40 = 12" Fir = Cor. fr. wh. 12" Fir brs. N 75°E 30 lks
 12" " " N30°W 9 "

41.50 - CK C NE

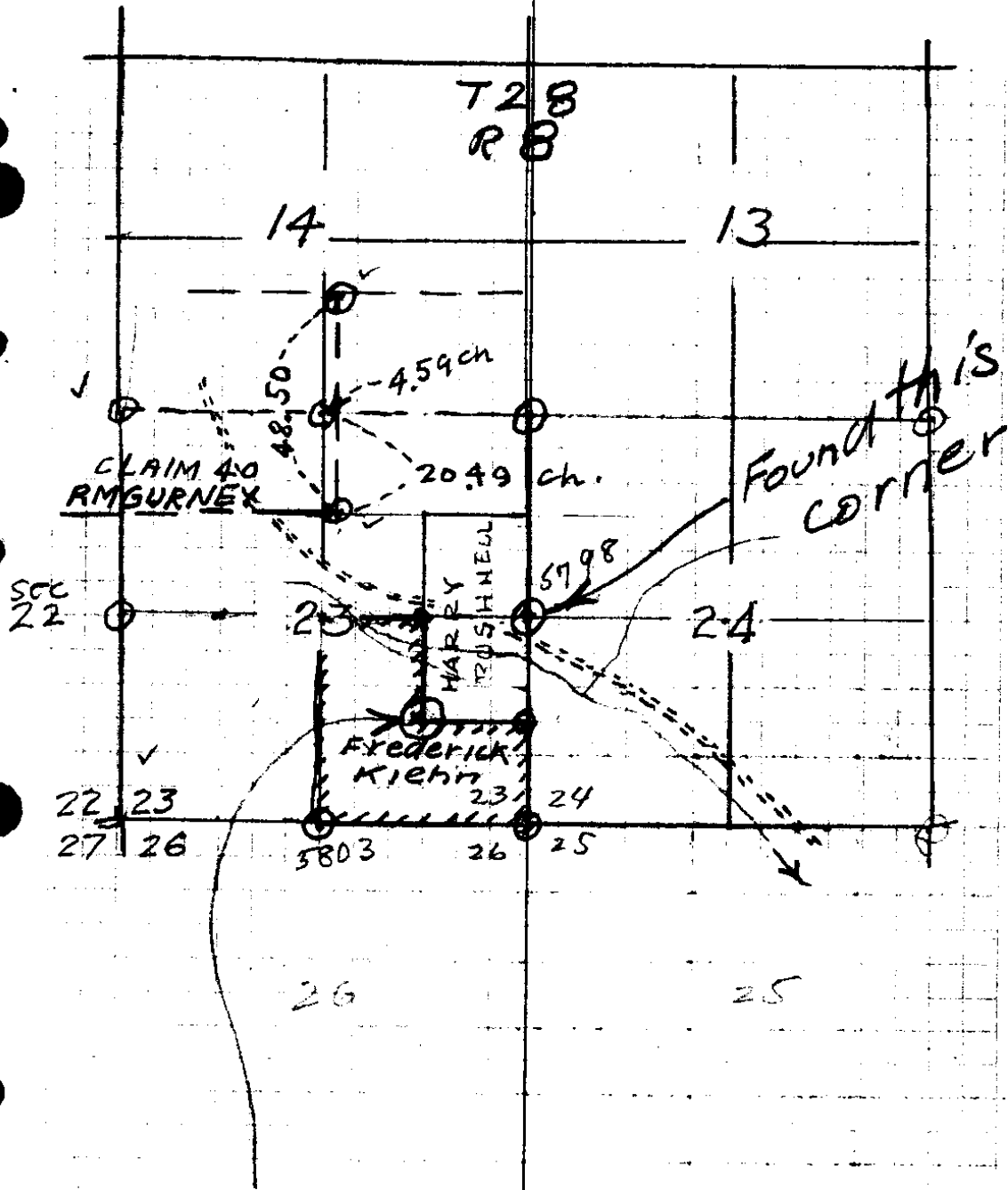
42.85 " "

43.50 " "

48.80 " "

71.53 " 25 lks wd. c Est

80.00 = Cor
 15/14
 22/23
 24" oak N76°W 110 lks
 36" " S59°W 40 "
 15" " S22°E 38 "
 36" " N89°E 718 "



16
 11.0'
 13" Madrone
 18" Madrone
 Ties to
 16th cor
 set by needle

11/28

SURVEY FOR
FRED. C. KIEHN

Apr 27
36

(88' Road)

"A"

129.8 Flat to creek

275.0 15°-50' .962 264.6

258.7 12°-0' .978 253.0

297.1 18 1/2° .948 281.6

13 + 45.1

4
16 Cor ±
cos = .968

146 = 141.3 = 12 + 68.0
14 1/2° 228.4
235 ON 14 1/2

298.5 17°-30' .954 284.8

275.5 4 1/2° .997 274.7

277.6 11°-05' .981 272.3

155.2 14°-40' .967 150.1

N
0 + 0 =

144.8 Flat SE Cor Sec
23 28/8

Boyer
 Weaver Tues PM
 Bushnell Elmer
 Ned Gurney

948 ³	258.7	4	962 ⁴	979
257	978	5	275	297
6636	20.696	6	4810	6853
8532	18109		6734	8811
1896	23283		1924	1958
<u>281.556</u>	<u>253.0086</u>		<u>264.550</u>	<u>290.763</u>

968 ⁵	968.5	236 ^{25/1}	968 ⁵
236 ¹	235	968	146 ¹
5808	5808	1888	5808
2904	2904	1416	3872
1936	1436	2124	968
228.448	228.448	228.448	141.328
275.5	2985	3002	8 144.8
992 ⁷	954	1518	7 150.1
19285	11940	144	5 272.3
24795	14925	1	2 274.7
2746735	26865		4 484.8
277.64	2847690		141.3
981	155.2	4	8 1268.0
2776	967 ¹		7 89.1
22208	10864	7	6 1355.1
24984	9312	8	
2723256	13968		
2254	1500784		
141.3	1320		
87.1	1268		
	52		
	23/41		

top hill

175.5 29°-45' .868 152.3

253.0 17°-0' .956 241.9

South on ~~5'~~ E of set

X
Sta ~~26~~ + 40

299.4

R Bank CK

168. Flat

L Bank CK

161.0 Flat

Sta 13 + 33.9 = Fence Cor. - Set cor point at 1320

619.7

CORD = 7 + 14.2

210.0 10°-0' .985 206.8

199.6 12°-25' .977 195.0

228.8 1°-0' .9998 228.7

W 83.7 Flat 83.7

X = CORNER E 1/4 COR 23 - 2640 N

N 297.0 11°-50' .999 290.8

A

WEST

NORTH

161
168
299.4
628.4
14

1320
660

should be 1980. x

1333.9 1
161 8
168 6 3
299.4 5
1962.3

2640
1962
678

956 ~
253

2868
4780
1912
2418.68

175.5
568
14040

12526
14046
1523340

Note at 2640' N of SECor 23.
SEC Cor is 2'E + 3'N of Transit Line

144.8 281.6 8
150.1 253.0 1
272.3 264.6 0
274.7 129.8 2
284.8 290.8 1
228.4 1219.8

1355.1
1219.8
2574.9

2640 1980
2575 1362
65. 18

985 ⁴
210 (3)

9850

1970
206850

9998
228.8

79984

79984

19996

19996
32875424

199.6 7
977 5 8

1397.2

1397.2

11964

195.0092

83.7 0

228.7 1

195.0 6

206.8 7

714.2 (5)

619.7

1333.9

23/41

			59.9	
			59.9	
	237.2	14° 0'	.970	230.1
	201.1	8°	.990	199.1
	65.3	10°	.985	64.3
13	159.3	6° 0'	.994	158.3

End 4-28-36

15+38.7

	107.6	7°	.992	106.7
	264.3	16° 45'	.957	252.9

11+79.1 - Back on Line

	108.1	8-10'	.990	107.0
--	-------	-------	------	-------

91.8 F1

61.1 ^{61.0} F1

61.1 ^{61.0} F1

Xh
 50
 55
 E

159 Flat

	115.7	7° 12'	0 .992	114.8
--	-------	--------	--------	-------

South	191.1	011	5° 15'	.993	190.3
-------	-------	-----	--------	------	-------

26 + 40 Set Post for 46th Cor

52'

25 + 88.4

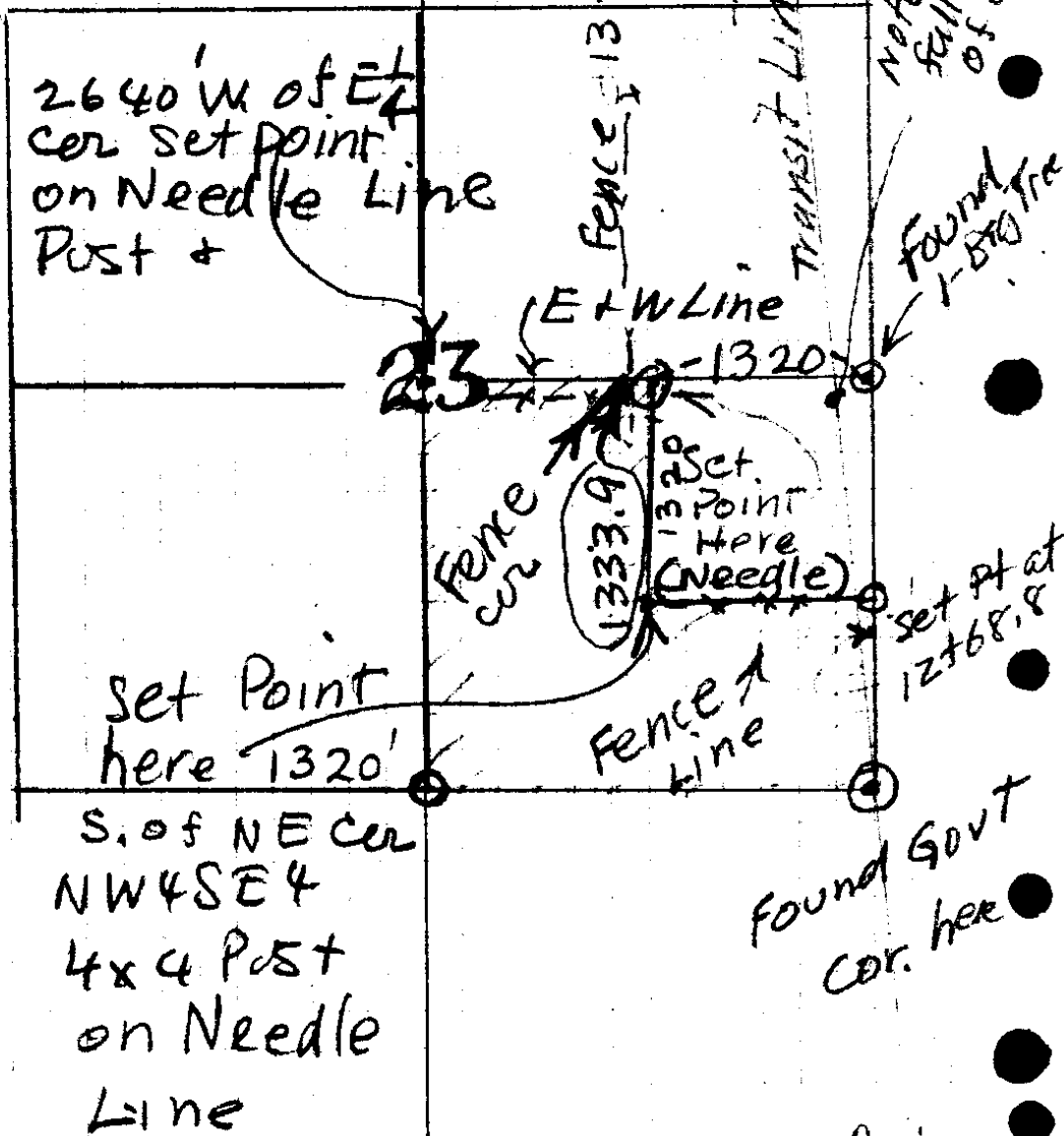
281.0 8^o-34' 2751

23 + 103

493
18
T.S.

23/4

Frederick Kienn
 Apr 27-28-29
 1 9 3 6
 T285 R 8 W



$$\begin{array}{r} 13204 \\ 1268 \\ \hline 42 \end{array}$$

281
990

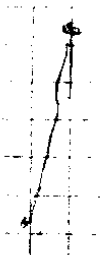
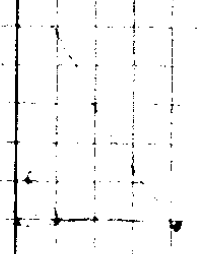
2529
2529

238.190
2310.3

2588.4

2640
2588

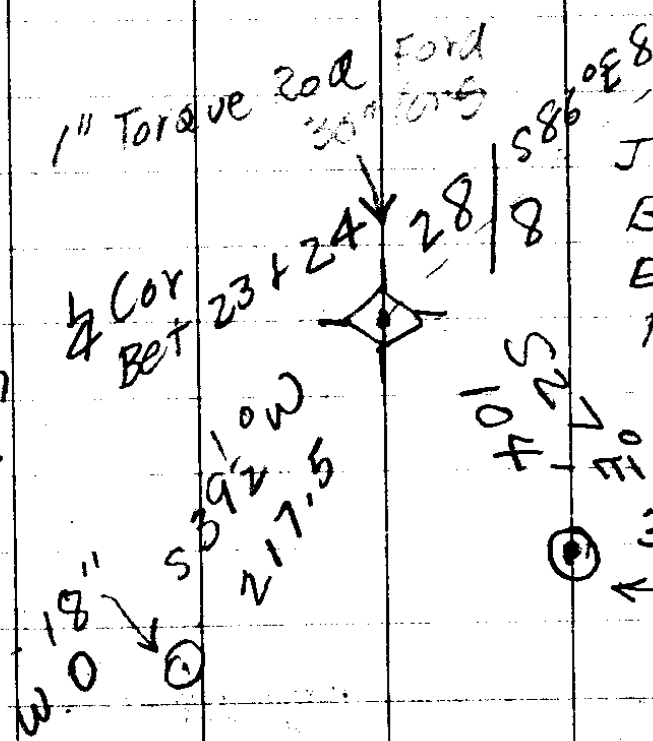
52.



23/41

29.99
39.02
3978

Tues
Apr. 27
1936



5' oak half
Dead
links
orig. oak
still in

J.M Weaver
B.W Gurney
Elmer Boshnell
Fred Kiehn