

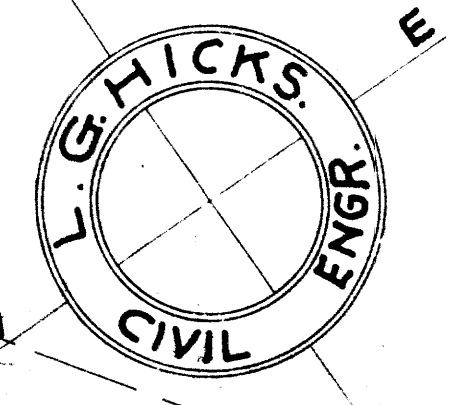
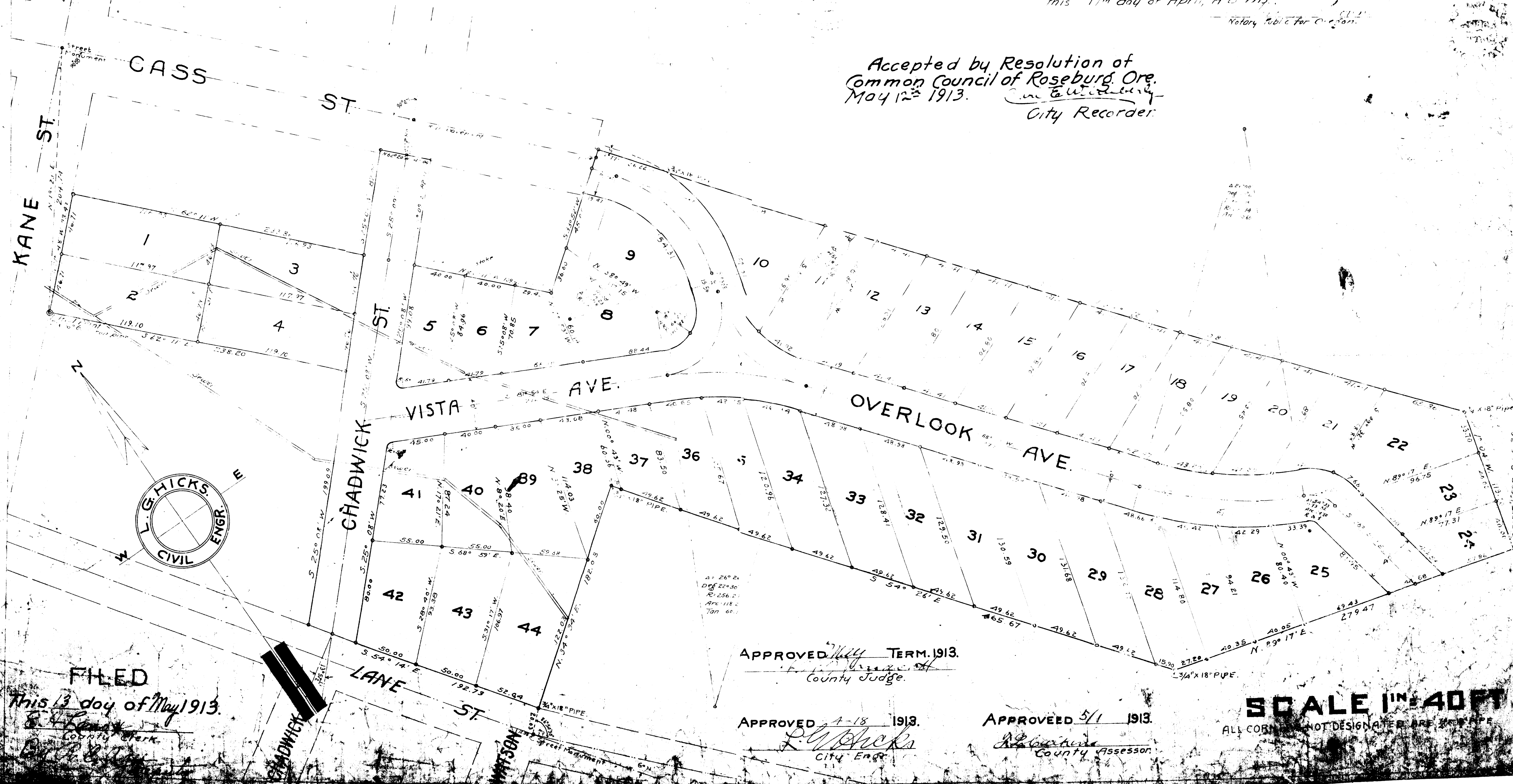
annexed map and plat is a true and correct copy of the original plat as shown and designated upon the original plat and they hereby dedicate to the public use of the city of Roseburg, Oregon, the land shown in the instrument and affixed their seals thereto this 11th day of April, A.D. 1913.

Signed and sealed in the presence of  
*L.G. Hicks*  
*Notary Public for Oregon*

*Notary Public for Oregon*

Subscribed and Sworn to before me  
this 11th day of April, A.D. 1913.  
*L.G. Hicks*  
Civil Engineer  
*Notary Public for Oregon*

Accepted by Resolution of  
Common Council of Roseburg, Ore.  
May 12<sup>th</sup> 1913.  
*City Recorder*



FILED  
This 13 day of May 1913.  
*County Clerk*

APPROVED *May* TERM 1913.  
*County Judge*

APPROVED *4-18* 1913.  
*L.G. Hicks*  
City Engr.

APPROVED *5/1* 1913.  
*County Assessor*

SCALE 1" = 40 FT  
ALL CORNERS NOT DESIGNATED ARE 30' WIDE



23-40

Coen L. Co

Topog for

O' Look Add

Replattig

23/40

MAY 6 / 36

$H_1 = 593.65$

Setup <sup>OTO</sup> on A3 Dist vert -5 Level

B.M. on Island Cass and Overlook = 581.56

BM Elev 581.56  
12.09

$H_1 = 593.65$

553<sup>10</sup>/<sub>2</sub>E  
10' ft. from  
NW Cor. Lot 12

10.0'  
N. 53 1/2° W

85.2  
= Top Curve  
-85 = 9' W. NW Cor  
Lot 12  
87.1 = NW Cor. 12  
-4.3 = 8'E = 89.3  
-4.1 = 11'E = 89.5  
-2.2 = 91.4 =  
T.P.

Willow Tree 11' E. NW Cor 12 on Lot Line → 4.1 = 11'E = 89.5

83° 25'  
N 82° E 28.0

10' S  
NW Cor 12

For Levels Ahead 1.26 = 592.39

581.56  
12.20

$H_1 = 593.76$

Setup 10'  
S. NW Cor 12

NW Cor 12 91° 0' R 47.0 +3° 21' 2.8 + 1 = +1.8  
H.D. = 46.9x on 1.0

" NW Cor 12 94° 15' N 46° E +6° 42' 7.6 - 2 = +5.6  
H.D. = 64.6x on 2.0

" " 96° 30' N 42° E +7° 50' 11.5 - 1 = +10.5  
H.D. = 84.2 on 1.0

99° 26' N 45° E +10° 0' NE Cor  
109.0 on 2.0 Lot 12  
H.D. = 107.3 18.9 - 2 = +16.9

119° 09' N 65° E +12° 14' SE Cor  
125.0 on 2.0 Lot 12  
H.D. = 122.1 + 26.7 - 2 = +24.7

126° 48' N 66 1/2° E +12° 0' 24.5 - 1 = +23.5  
H.D. = 115.4 on 1.0

A Boyer  
Wayne Shaw

- 4.5 = Rod at set up.

595.6 ✓

● 599.4 ✓

604.3 ✓

● 610.7 ✓

● 618.5 ✓

617.26 ✓

83/40

Set up  
10'S  
NW corner  
on Lot Line

F. 5  
640  
on

H 1 = 593.76

MAY 9 / 36

A 3

Dist

Vert  
L

-S Level

125°-12'	85.0 N 70°E HD=83.8	9°-32' on 1.0	14.1-1=+13.9
133°-44'	64.0 N 79°30'E HD=63.5	6°-51' on 1.0	7.6-1=+6.6
150°-07'	45.0 S 84°E HD=44.8	5°-13' on 1.0	4.1-1=+3.1
164°-51'	37.0 S 69°E HD=36.9	3°-50' on 1.0	2.5-1=+1.5
174°-24'	36.0' S 60°E HD=35.9	2°-0' on 1.0	1.2-1=+0.2
181°-22'	36.0 S 52½°E	x	El. 592.6 1.2 =
	Top curb 9' W of Above		592.5 1.26 Curb
133°-32'	152.0 N 80°E HD=147.8	+13°-28' on 2.0	East Co Bet 13+14 35.4-2=+33.4
136°-30'	137.0 N 82°E HD=133.3	+13°-24' 2.0'	31.7-2=+29.7
141°-07'	119.0 N 87°E HD=116.6	11°-28' 1.0	23.6-1=+22.6
150°-55'	95.0 S 84°E	9°-17' 1.0	HD=93.7 El=1513-1= +16.3

606.9 ✓

600.4 ✓

596.9 ✓

595.3 ✓

594.0 ✓

627.16 ✓

623.5 ✓

616.4 ✓

610.1 ✓

23/40

0 to F, S on  
 Setup 10'S NW on 12 on Lot Line  
 H1 = 593.76  
 A30' DIST 79.0  
 168-33 566°E HD = 78.3  
 Vert L - S  
 7° 40' 10.6 - 1 = +9.6  
 1.0

0 1 74.0 6° 0'  
 176-39 S 58° E 1.0 7.7 - 1 = 6.7  
 HD = 73.6

180° 0' 72.6 4° 12' Cor 13/14  
 S 54° E 1.0 W Line  
 72.4 1.0 = 5.3 - 1 = +4.3

T.P. = 592.39 - See Sheet #1  
 on inside + S = 15.62  
 Curb - 9' W 60 8.0 1.0 = H1  
 Cor bet 14/15

on Curb at Setup - 4.8 = 603.2

Cor Bet 14 + 15 - West } 2' west of - 4.3 = 603.7

Cor bet 14 + 15 - 3.5 = 604.5

" " " " 4' East of - 1.1 = 607.9

on N. Line (FS or L0 + 15 (0 to on NE line)) N 50° E 9° 10' 6.4 - 1 = +5.4  
 40.0 1.0  
 HD = 39.5

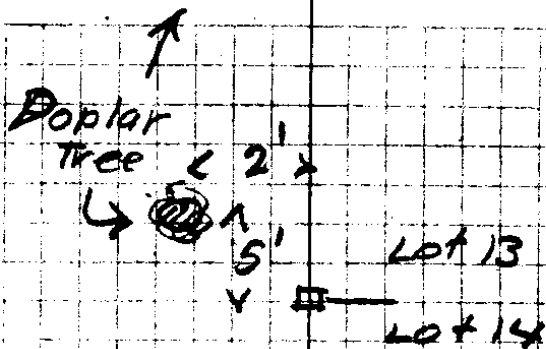
" 0.0 N 50° E 11° 30' 9.5' N to 8" Poplar  
 HD 58.8 0 11 4.0 12.0 - 4 = +8.0

" 0.0 N 50° E 11° 20' 15.5 - 4 = 11.5  
 HD = 77.4 0 11 4.0

" 0.0 N 50° E 12° 37' 24.0 - 2 = +22.0  
 HD = 107.3 2.0

01. 0.0 N 50° E 12° 50' 27.1 - 2 = +25.1  
 HD = 118.9 12.2 2.0 Bet 14/15 E Line

603.4



600.5

598.1

613.4

616.0

619.5

630.0

633.1

5/7/36

Setup	Zero of FS on	A3	Dist	Vert		
on inside curb-w of curv 14/15	FS on curv 14/15		139.0	14°-03'	cor 15/16	
	E Line	17°-35'	N67°E	on 2°	E Line	
			HD=134.8	23.7-2=	+31.7	
	on N Line 16	19°-13'	123.0'	14°-01'	on N Line 16	
			N69°E	2.0	29.8-2=	+27.8
			HD=119.3			
"		24°-07'	90.0	11°-21'	17.7-1=	+16.7
			N74°E	1.0		
			HD=88.2			
"		34°-51'	63.0	10°-30'	11.5-1=	+10.5
			East	1.0		
			HD=61.9			
"		59°-10'	46.0	6°-46'	5.4-1=	+4.4
			S76°E	1.0		
			HD=45.5			
		63°-30'	44.0	4°-50'	Cor bet 15+16 West	
			S66½°E	1.0	3.7-1=	+2.7
			HD=43.8			
			HD=41.0	3°-25'	3' W of Lot Line	
				1.0	2.4-1=	+1.4'
			HD=41.0	3°-0'	9' W of 15-16 Sec on Curv	
				1.0	2.1-1=	+1.1

Set up  
 a3=296.11  
 16.0' from Curv 17  
 on W. (on curb)

Zero on	Dist	Vert	
cor bet 16+17 East	00	117.0	12°-40'
		N42°E	2.0 cor
		HD=114.1	
	357°-0'	81.0	9°-45'
		N39°E	1.0
		HD=79.8	
	341°-30'	34.0	5°-08'
		N24°E	1.0
			17

HI=608.01  
 -5=0.24  
 EI=607.77  
 +5=14.23  
 HI=622.00 ✓  
 25.62=+23.6  
 13.7-1=+12.7  
 3.0-1=+2.0

639.7 ✓

635.8 ✓

624.7 ✓

618.5 ✓

612.4 ✓

610.7 ✓

609.4 ✓

609.1 ✓

645.6 ✓

634.7 ✓

624.0 ✓

Setup

O to FS on A3  
Cv 16/17  
East

Dist 9.0 W  
Vert Angle Cor Bet  
17/18 West

577/36  
-5 El = 621.1  
Curb

on Cv  
17/18 West

H1 + 0.2  
= 622.2

31.0  
HD 30.7

7° 0'  
1.0

4' E Cor  
17/18 W.  
3.8 - 1 = +2.8

30° 55' 59.0'  
N 73 1/2 E  
HD = 57.9

11° 15'  
2.0

11.5 - 2 =  
+9.5

21° 48' 100.0'  
N 64 E  
HD = 98.1

11° 10'  
1.0

11.9 - 1 =  
+10.9

128.0  
41.4  
HD = 40.3

13° 18'  
1.0

Cor 17/18  
East  
9.5 - 1 = +8.5

33° 17' 156.0  
N 75 1/2 E  
HD 151.8

13° 22'  
2.0

Cor 18/19  
East  
36.0 - 2 =  
+34.0

35° 55' 140.0  
N 78 E  
HD 136.4

13° 0'  
2.0

31.4 - 2 =  
+29.4

? 121.0  
40° 14' N 82 1/2 E  
HD = 118.7

11° 12'  
1.0

23.5 - 1.0 =  
+22.5

73.0  
69° 52' S 68 E  
HD = 71.8

10° 14'  
3.0

7' E Cor  
18/19 W  
on Line  
13.0 - 3 = +10.0

622.0  
8.4  
630.4

71.0  
74° 40' S 63 E  
HD = 70.0

9° 16'  
3.0

Cor 18/19  
West  
11.4 - 3 = +8.4

Elev =  
9.5 - 2 = +7.5

HD = 83.4 - 84.0

6° 30' 5' W Cor 18/19  
2.0 on Line

Elev = 8.0 - 1 =  
+7.0

HD = 83.5 - 84.0

5° 30' 9' W Cv 18/19  
1.0 Curb

624.8 ✓

631.5 ✓

~~622.9~~ 640.3

~~650.4~~  
~~630.5~~

656.0 ✓

651.4 ✓

644.5 ✓

632.0 ✓

630.4 ✓

629.5 ✓

629.0 ✓

.981

.193  
1.00  
19.300

18.3  
622  
640.3

230  
128

1840  
460  
230  
29.440  
1  
284

973  
128

~~778~~  
~~1948~~  
~~973~~  
114549  
622  
284  
6504

0 to  
 Setup FS on Azim Dist L  
 on cor bet 16/17 on East  
 HI = 622.0  
 5' E cor bet 16/17 west  
 cor for 16/17 on West Side }  
 9' W " " on Curb  
 57-7/36  
 -S  
 -3.2 = 614.8  
 -6.0 = 616.0  
 -6.8 = 615.2

HI = 622.00  
 -S = 00  
 Elev 622.00 T.P.  
 15.81  
 HI = 637.81 ✓  
 -S = 2.54  
 Elev 635.27 T.P. on Curb W. Side of lot  
 15.92  
 HI = 651.19 ✓

Setup on Curb  
 2' 5" 19/20 W.  
 20/21 west  
 81.0 -07-05' 9' W 19  
 N 80° W on 7.0' W. 20  
 HD = 80.14 10+7 = -17.0  
 79.0 -12-12' on Curb  
 N 74° W on 4.0' 19/20  
 HD = 74.2 16.7+4 = -20.7  
 76.0 -7-27' 6' E  
 N 71° W on 3.0' on curb  
 HD = 75.4 9.8+3 = 12.8

65'  
 45-0' N 28 1/2 W -2.8 = 648.4

88' +7-05' Curb 19/20  
 76-50 N 42 E 2.0 E  
 HD = 87.3 10.8-2 = 18.8

76  
 104-47 N 31 1/2 E 1.0 E  
 HD = 74.8 13.1-1 = 12.1

49  
 90-50 N 18 E 3.0  
 HD 48.6 6.0-3 = +3.0

634.2

630.5 ✓? 636.5

638.4 ✓

648.4

660.0

663.3

654.2

23/10

Set up

0 to FS

651.19  
Az. 76°53'  
Dist 37.0  
N5½E  
36.7

Vert  
L  
6°30'  
3.0

5/7/36  
-5  
4.2-3 = +1.3

5' E Cor 20/21 W

-7.0<sub>644.7</sub>

Cor 20/21 W

-8.3<sub>642.9</sub>

9' W Cor 20/21 curb

-10.3<sub>640.9</sub>

T.P. → 635.27 - W. Side of Look on curb  
+ S 16.48  
HI = 651.75

MAY 8

AEW  
22/23 W.

Cor 21/22 EAST

89.0  
N34°E  
HD = 86.9

12°17'  
2.0

Cor 21/22 EAST

18.9-2 = +16.9x

347.39 154.0  
N22½E  
HD = 53.4

8°17'  
1.0

7.8-1 = +6.8

5.0' E  
21/22 W on line

649.7  
-2.0

301.43 25.0' Cor  
N22W 21/22 W

647.7  
-4.0 ✓

4' W "

45.9  
-5.8

9' W "

45.5  
-6.2

10.39 90.0'  
N44E  
HD = 87.7

130.05  
2.0

on E line  
16'S 21/22  
20.4-2 = +18.4

HD = 82.1

4°10'

63.0  
N38E

9°51'  
1.0

10.8-1 = +9.8

# A Boyer + Wayne Shaw

652.5

$$\begin{array}{r} 113 \\ 37 \\ \hline 791 \\ 339 \\ \hline 4181 \end{array} \quad \begin{array}{r} .993 \\ 37 \\ \hline 6951 \\ 2979 \\ \hline 36741 \end{array}$$

← 668.6

658.6 ✓

670.1

661.6

23/40

Setup

OFO  
F.S.

HI=651.75

Vert

May 8

4.5' W  
22/23  
west

HD=52.1

Azim Dist  
29°-42' 53.0'  
N63½°E

L -S  
10°-30' 9.6-1=  
1.0 +8.6'

37°-26' 107.0  
N71°E  
HD=104.8

11°-30' 21.3-2=19.3  
COR SE  
Block.

41°-40' 87.0  
N75½°E  
HD=85.6

10°-18' 17.3-2=  
2.0 +15.3

56°-14' 110.0  
EAST  
HD=108.3

10°-08' COR 22/23  
5.0 upper  
19.4-5=  
+14.4

54°-25' 75.0  
N88°E  
HD=73.9

9°-44' 12.7-3=  
3.0 +9.7

53°-47' 25.0  
N87½°E  
HD=24.5

17°-25' 4.9-2.0=  
2.0 +2.9

48°-28' 10.0  
N82°E  
HD=10.0

8°-24' 1.4-1.0=  
1.0 +0.4

40°-0' 4.5'  
N74°E

=650.0 COR  
-1.8 22/23  
LOWE.  
WEST

At Set up

on top curb 9' W 23

" " " 9' W 23

4' W 23/24 W

COR 23/24 W

HD=45.0

2°-14' 5'E 23  
2.0 HD=103.24 W

HD=69.0

88°-08' S58°E

4°-39' 5.6-2=  
2.0 +3.6

647.2  
-4.6=  
646.4  
-5.4=  
646.9  
-4.9=  
647.4  
-4.4=  
649.7  
-2.1

E1

660.4 ✓

671.05 ✓

667.0 ✓

666.2 ✓

661.5 ✓

654.7 ✓

652.1

652.0

655.3

23/10

Setup

oto  
F.S.

A3

Dist

Vert  
L

H1 = 651.75

78°-25' 110.0  
569' E  
HD = 109.4

5°-42' ✓  
4.0  
-S  
10.9 - 4 = +6.9  
Cor  
23/24  
upper

90°-47' 123.0  
555' E  
HD = 22.6

4°-22' ✓  
4.0  
9.4 - 4 = +5.4  
SW Cor  
Block

92°-00' 124.0  
555' E  
123.6

4°-15' ✓  
4.0  
10' E old  
Orig Cor

93°-17' 126.0  
553' E  
125.6

4°-15' ✓  
7.0  
9.2 - 4 = +5.2  
3 W SW  
Cor Block  
as reset  
10' E

99°-05' HD = 110.0  
546½' E

3°-15' ✓  
3.0  
9.3 - 7 = +2.3  
6' W SW  
Cor Blk  
new Cor

100°-11' HD  
120.0

3°-05' ✓  
3.0  
5.2 - 3 = +2.2  
6.4 - 3 = +3.4  
3' W of  
Above

101°-35' 140.0  
546' E  
HD = 139.8

3°-07' ✓  
6.0  
7.6 - 6 = +1.6

113°-45' HD = 80.0  
533½' E

1°-20' ✓  
1.0  
-1.9 - 1 = -2.9  
Cor NW  
Lot 24

6' OUT  
fr. Cor  
NW Lot 24  
- 3.9 =  
647.8

9' OUT  
- 4.8 = 647.0  
End  
Passing  
SUTER  
W Side  
End (S.)  
- 4.83 = 646.9  
- 5.06 = 646.7

MAY 8-36

Buyer + Wayne Shaw

Elev. 658.7 ✓

EI = 657.2 ✓

EI = 656.9 ✓

EI 654.1 ✓

EI 654.9 ✓

655.2 ?

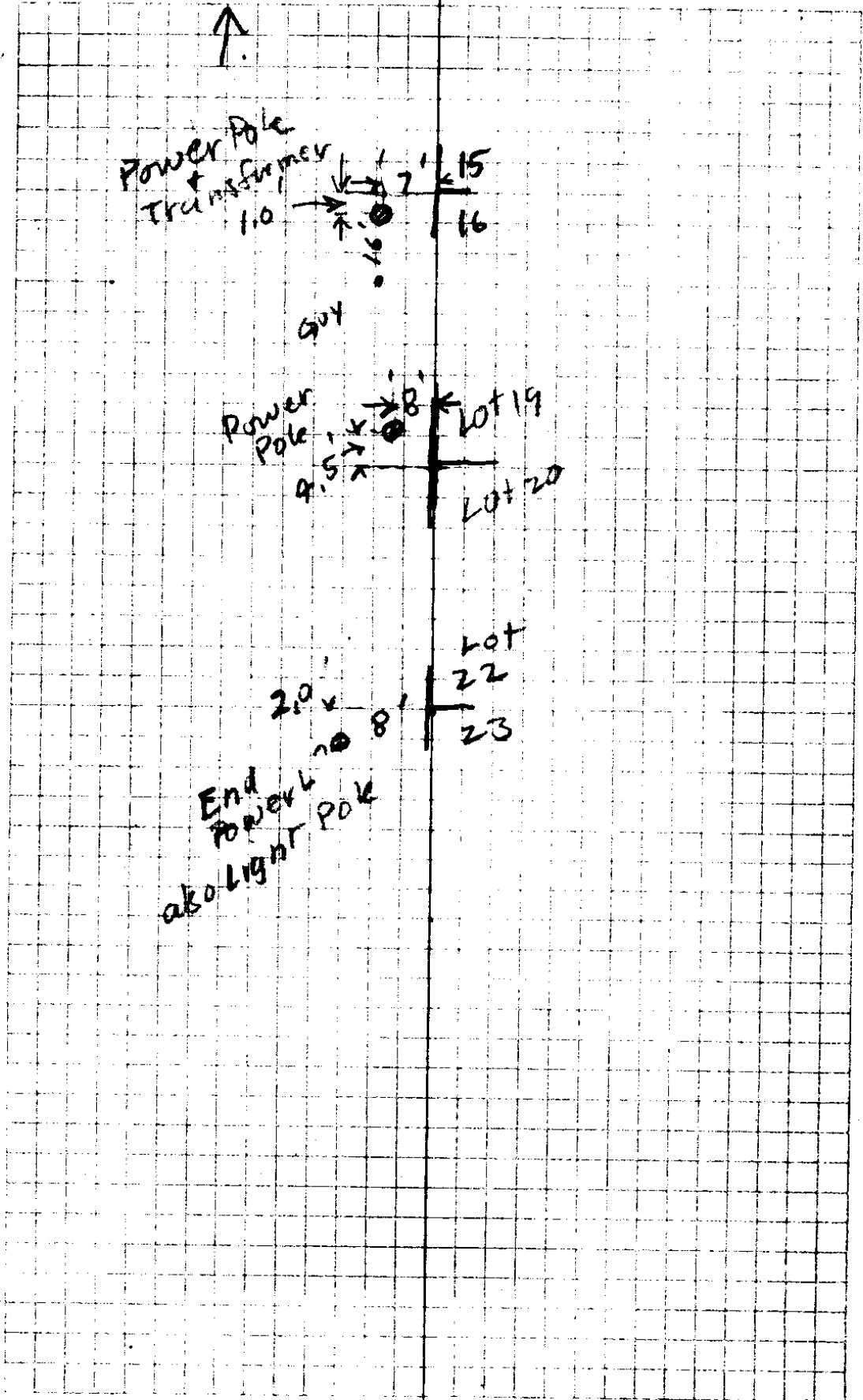
653.4

652.7 ✓

03/40

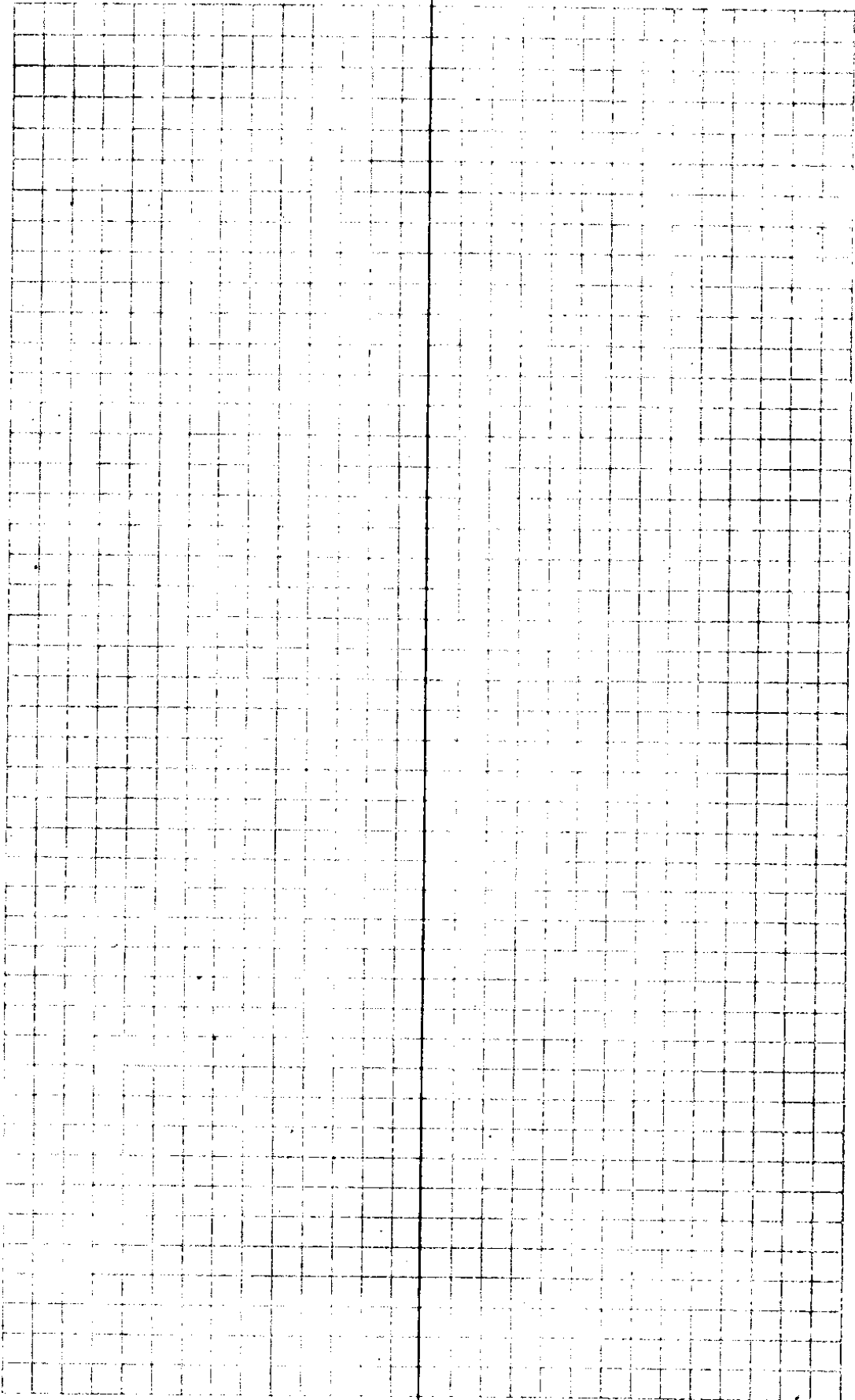
For Int Stream Bed.  
 Setup 18/19 W <sup>0 to</sup> F.S. <sup>CUV</sup> 17/18  
 Az Dist vert Elev  
 = 630.4 ~~4.7~~ 635.1 HI  
 + 4.7  
 5°-30' 37.0' N47°W -10.5 = 624.6  
 24°-16' 33.0' N30°W -7.8 = 627.3  
 57°-20' 42.0' N1°E -3.4 = 631.7  
 67°-10' 49.0' N7°E -2.0 = 633.1  
 82°-15' 55.0' 4°-30' N19°E 3.0 4.3-3 = 636.4  
 HD=54.8 +1.3  
 94°-40' 65.0' 6°-20' N36°E 2.0 7.2-2 = 640.3  
 HD=64.6 +5.2  
 101°-10' 90.0' 14°-05' N53°E 3.0 21.9-3 = 654.0  
 HD=87.3 +18.9

May 8-30 Boyert w. Shaw





May 7-1936



23/40



CS FILE FOLDER

CONTAINS

MORE

INFORMATION