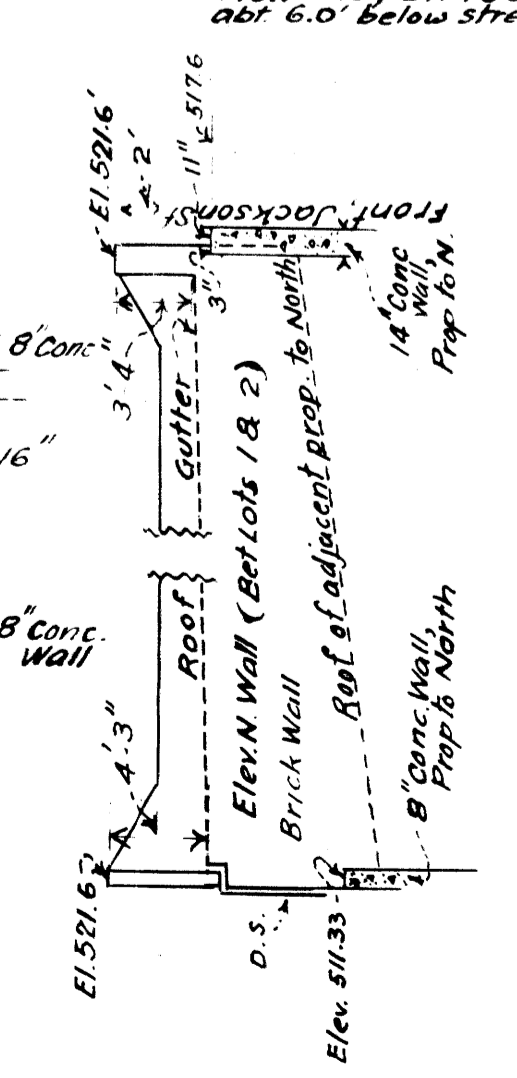
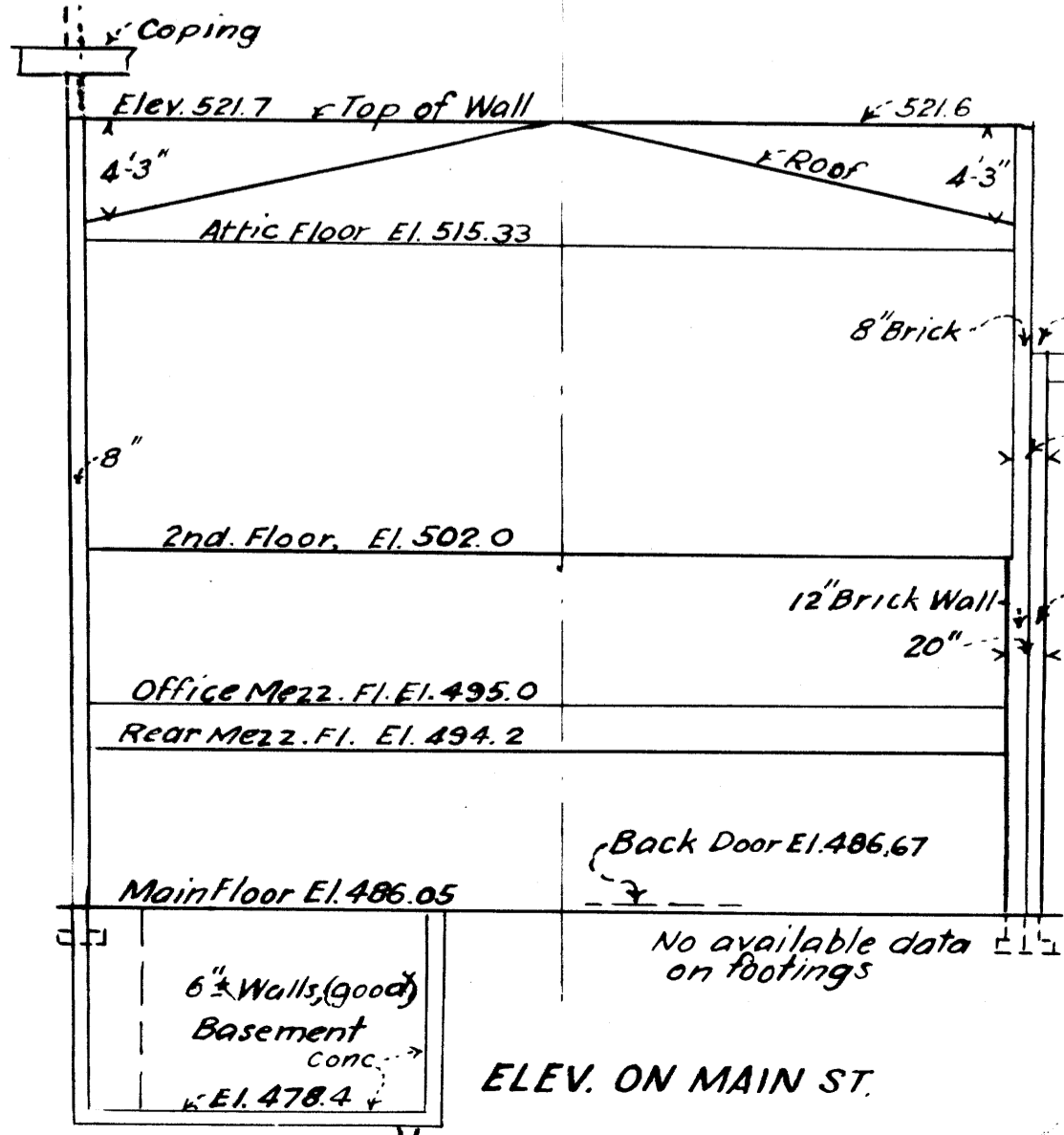
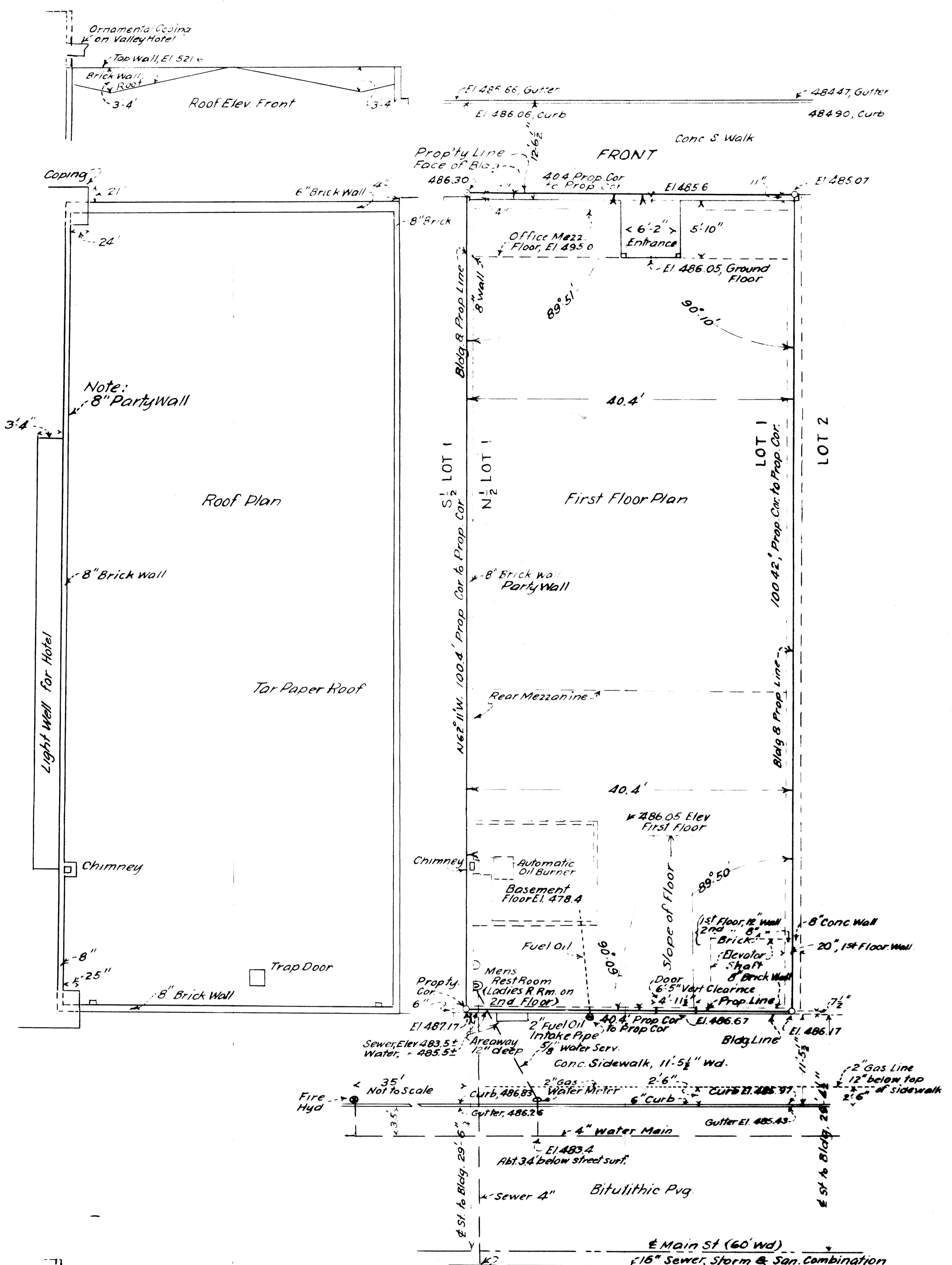


E Jackson St (60' wd)

Bitulithic Paving



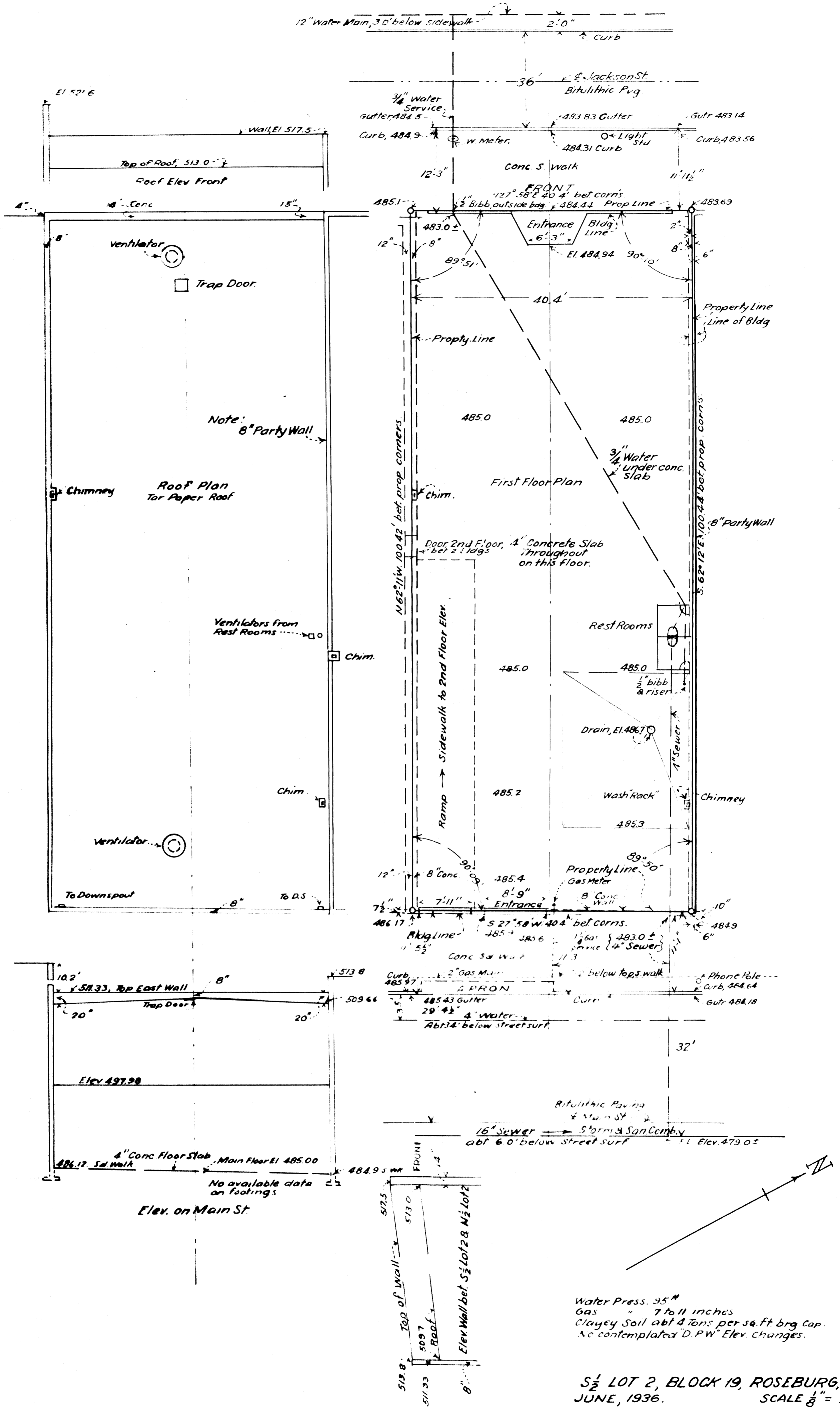
Water Press. 95"
 Gas " 7 to 11 inches.
 Clayey Soil, abt. 4 Tons per sq. ft. brg. Cap.
 No contemplated D.P.W. Elev. Changes.

N $\frac{1}{2}$ LOT 1, BLOCK 19, ROSEBURG, ORE.
 JUNE, 1936
 SCALE $\frac{1}{8}$ " = 1 FT.

This is to certify that the above plat shows the conditions existing at this time on & adjoining the N $\frac{1}{2}$ Lot 1, Blk. 19, Roseburg, Ore; to the best of my knowledge & belief. June 15, 1936. Field & office work done by myself.

Signed *Arthur Jones*
 Reg. Prof. Engineer Lic. 1561

(Sykes)



Water Press. 35*
 Gas " 7 to 11 inches
 Clayey Soil abt 4 tons per sq. ft. brg. Cap.
 No contemplated "D.P.W." Elev. changes.

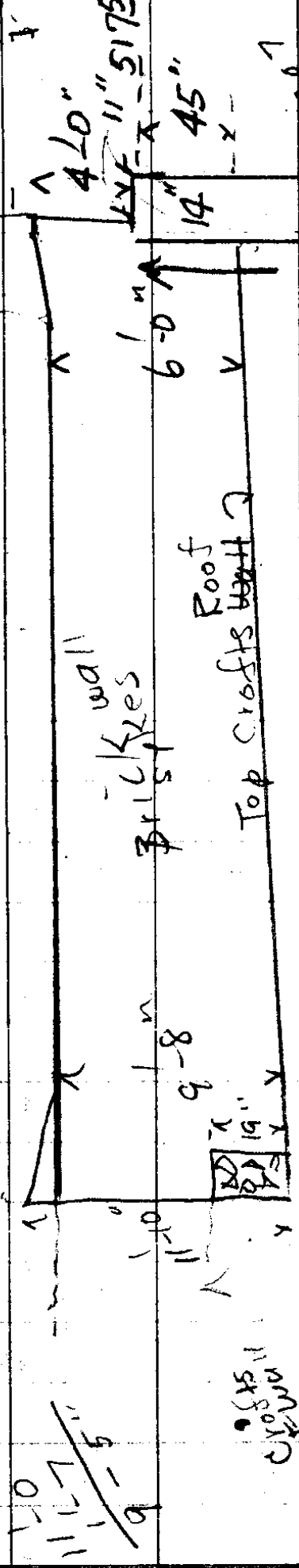
S 1/2 LOT 2, BLOCK 19, ROSEBURG, ORE.
 JUNE, 1936. SCALE 1/8" = 1 ft.

This is to certify that the above plot shows the conditions existing at this time on & adjoining the S 1/2 of Lot 2, Blk 19, Roseburg, Ore, to the best of my knowledge & belief, June 15, 1936. Field & Office Work done by myself.

Signed & sealed
 Reg. Prof. Engr. Oratic 1581

$$\frac{11.10}{2} = 5.55$$

$$\frac{4.10}{3} = 1.37$$



Montgomery
 Ward Leases
 6/10-13/1936
 A. Bowen
 H. E. ... Jr.

Small Crafts
 Looking S.

$$\frac{485.07}{32.5} = 14.93$$

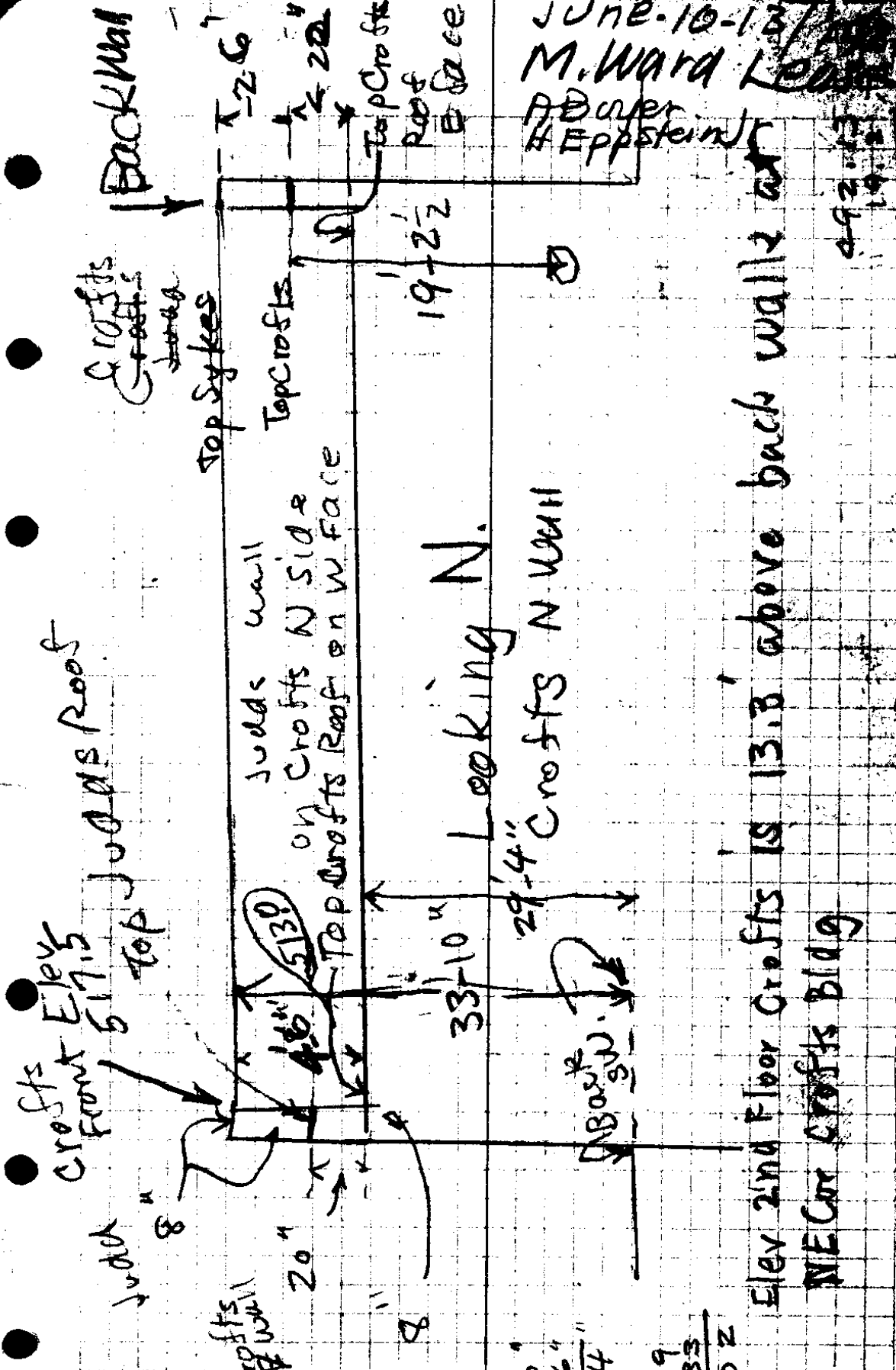
Swank

$$\frac{521.6}{11.8} = 44.19$$

Small Crafts
 Looking S.

$$\frac{485.15}{32.5} = 14.93$$

$$\frac{486.30}{35.13} = 13.84$$



JUNE 10-13
 M. Ward
 P. Boyer
 H. Epstein

Elev 2nd Floor Crofts is 13.8' above back wall & NE corner Crofts Bldg

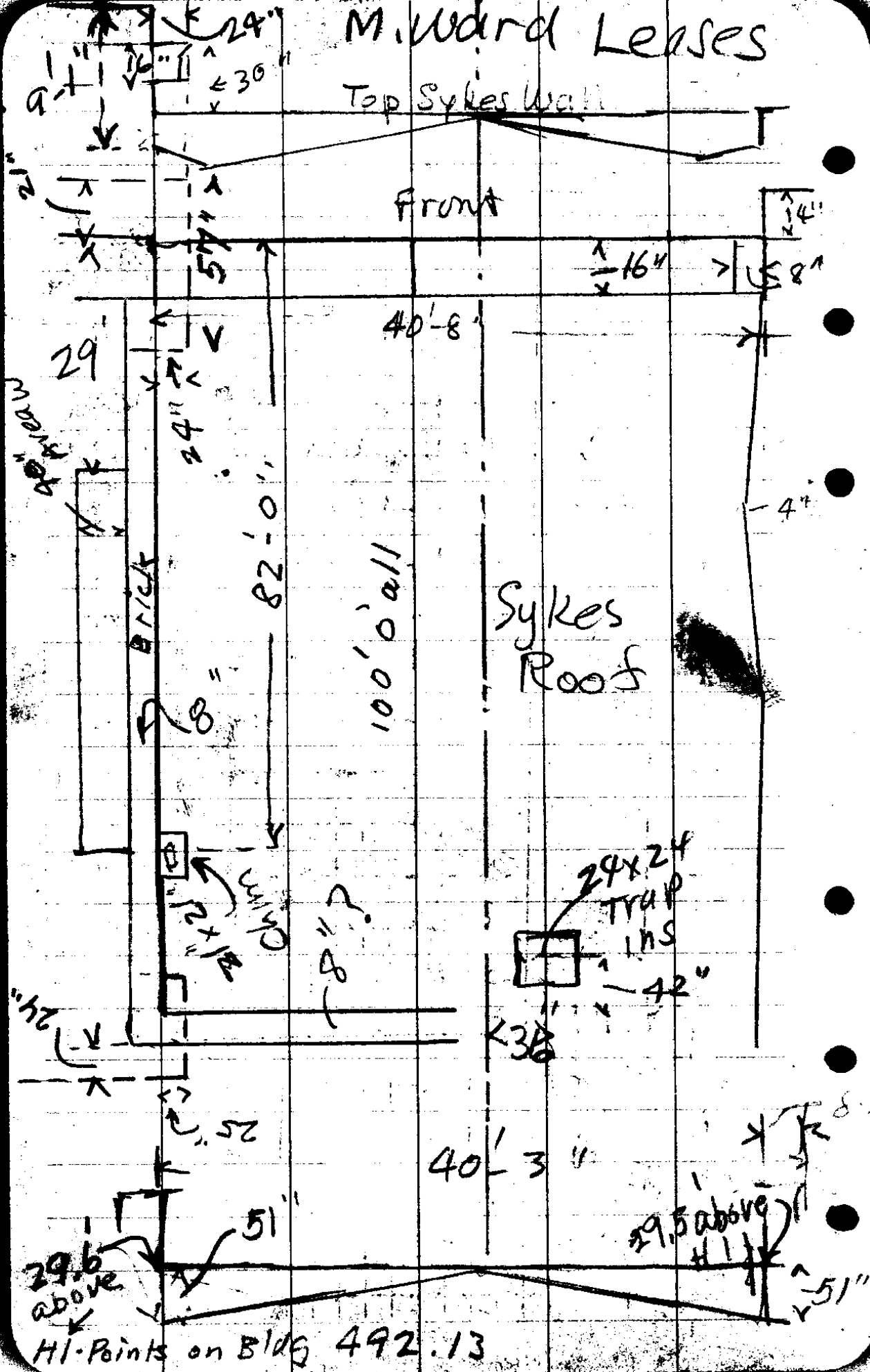
3370"
 4-6"
 29-4"
 483.69
 29.33
 513.02

2/3/39

492.13
 19.2
 511.33

M. Ward Leases

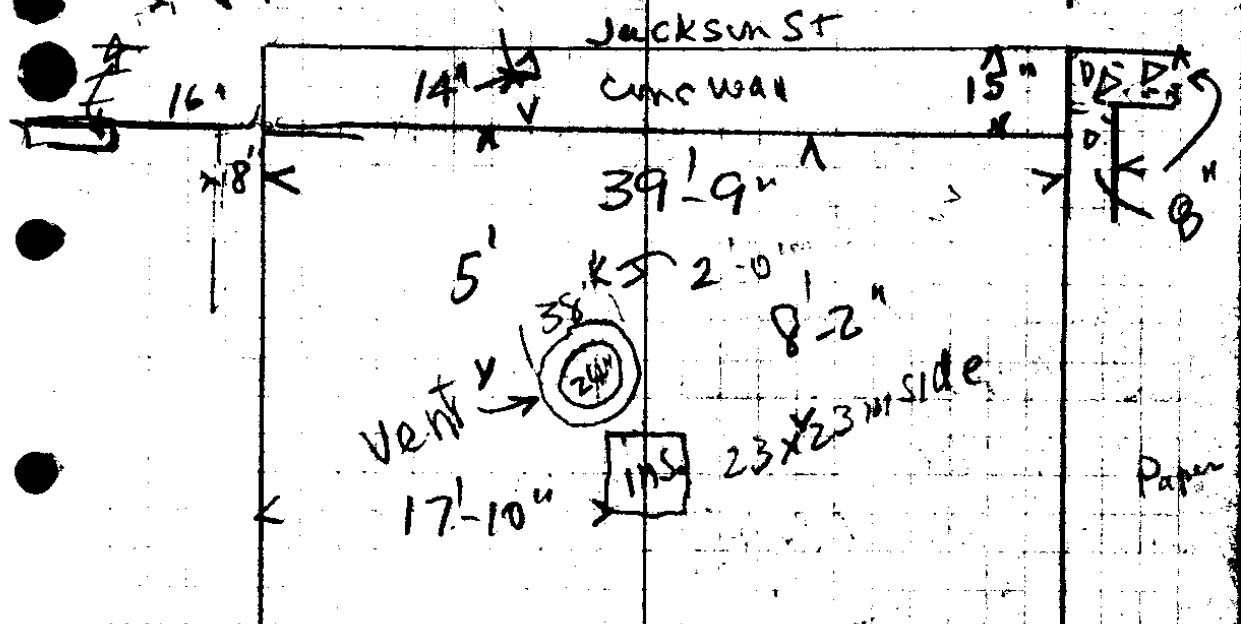
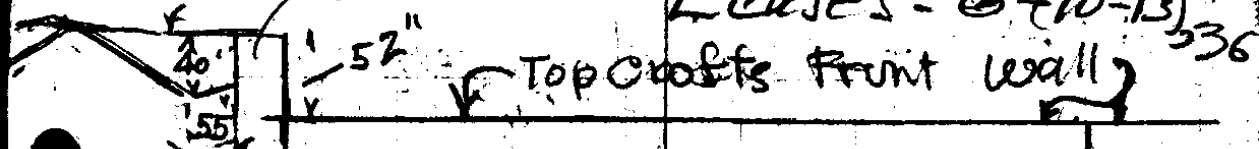
Top Sykes Wall



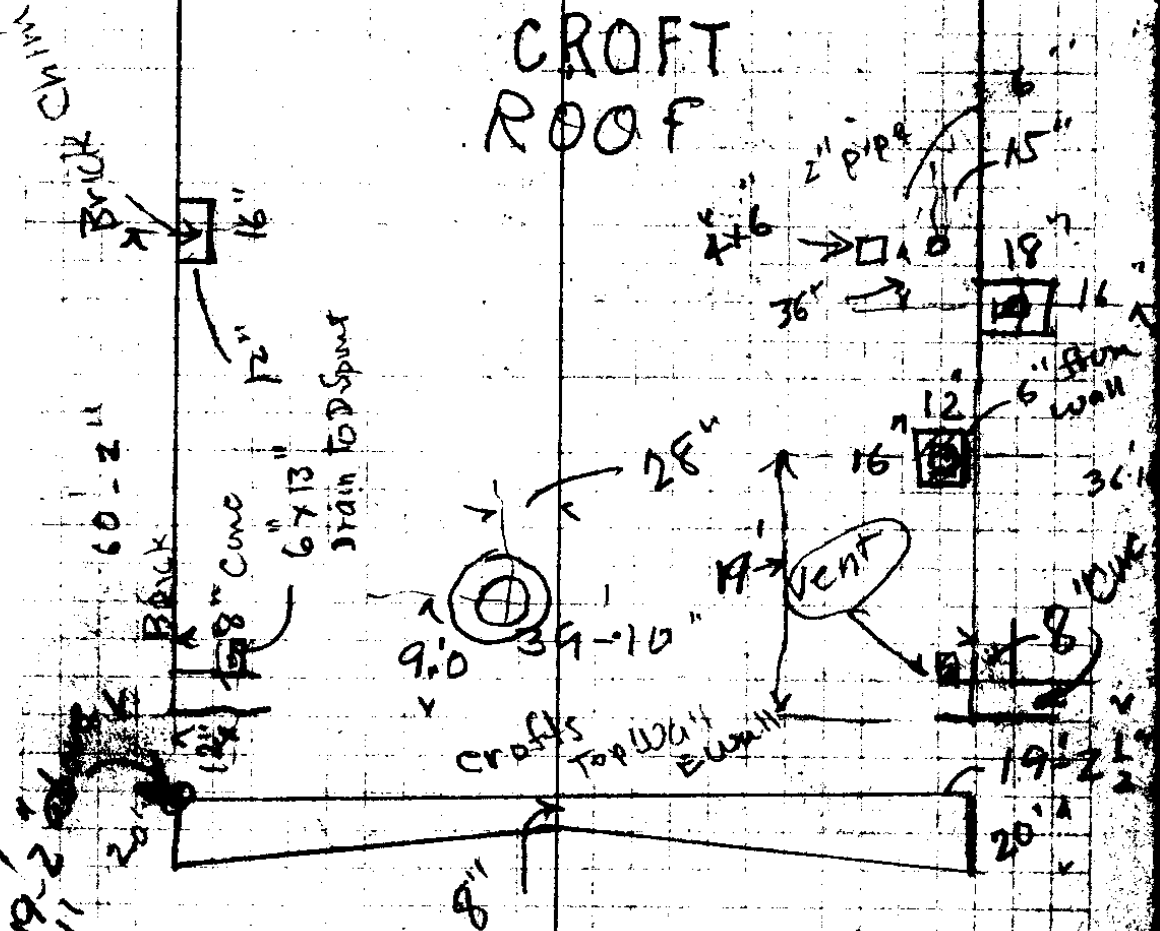
HI-Points on Bldg 492.13

Top Sykes Fr. Wall 8" Brick

Montgomery Ward
Leases - 6 (10-13) 336



CROFT
ROOF



521.6	492.13
4.3	19.2
517.3	511.33

2/23/29

M. Ward. LEASES

Sta	HS	H1	-S	Elev	BM
	6.25	483.69		477.44	Court
			0.58	483.11	HS & Lawn
	9.02	492.13			
NE Cor			7.23	484.90	Main St
Crofts Prop			7.49	484.64	C. 9
" Curb			7.95	484.18	"
" Gutter			6.57	485.53	"
Crofts Door N Side			6.25	485.88	"
" " S			5.96	486.17	"
SE Cor Prop			6.16	485.97	"
" Curb opp "			6.70	485.43	"
" Gutter " "			5.46	486.67	
Sykes Door Back Wall			4.96	487.17	
" SE Cor.			5.3	486.83	
Curb opp "			5.87	486.26	
Gutter "					
Marked Points (3) on Bldg Main St					
at H1 Elev 492.13					
			5.18	486.95	
⊙	5.13	492.08			
6.1 down to F.L.			3.86	488.22	top sewer main wash
	1.81	488.76		486.95	

JUNE 11 1936

A Boyer *
H. Epstein Jr
Rod

486.05
825

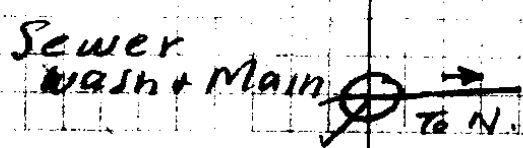
494.30

$$\begin{array}{r} 485.56 \\ \underline{475} \\ 490.31 = HI \\ 4.40 = \text{Drive at Ent} = 485.9 \\ 4.95 = 5' \text{ W of Back Walk } 485.36 \\ 5.1 = 17' \text{ W } \quad \quad \quad 485.21 \\ 5.6 = \text{Drain} \quad \quad \quad 484.71 \end{array}$$

$$\begin{array}{r} 485.88 \\ \underline{6} \\ 491.88 = \text{EL} \\ \underline{61} \\ 497.98 = \text{EL 2nd Fl. Cross.} \end{array}$$

Note M.W.'s Mezz. Fl. is 8.25
Above Ground Floor

7.0 above SE Cor Sykes at
SW to Mezz Floor
8'-10" bet This Fl + Top Fl.

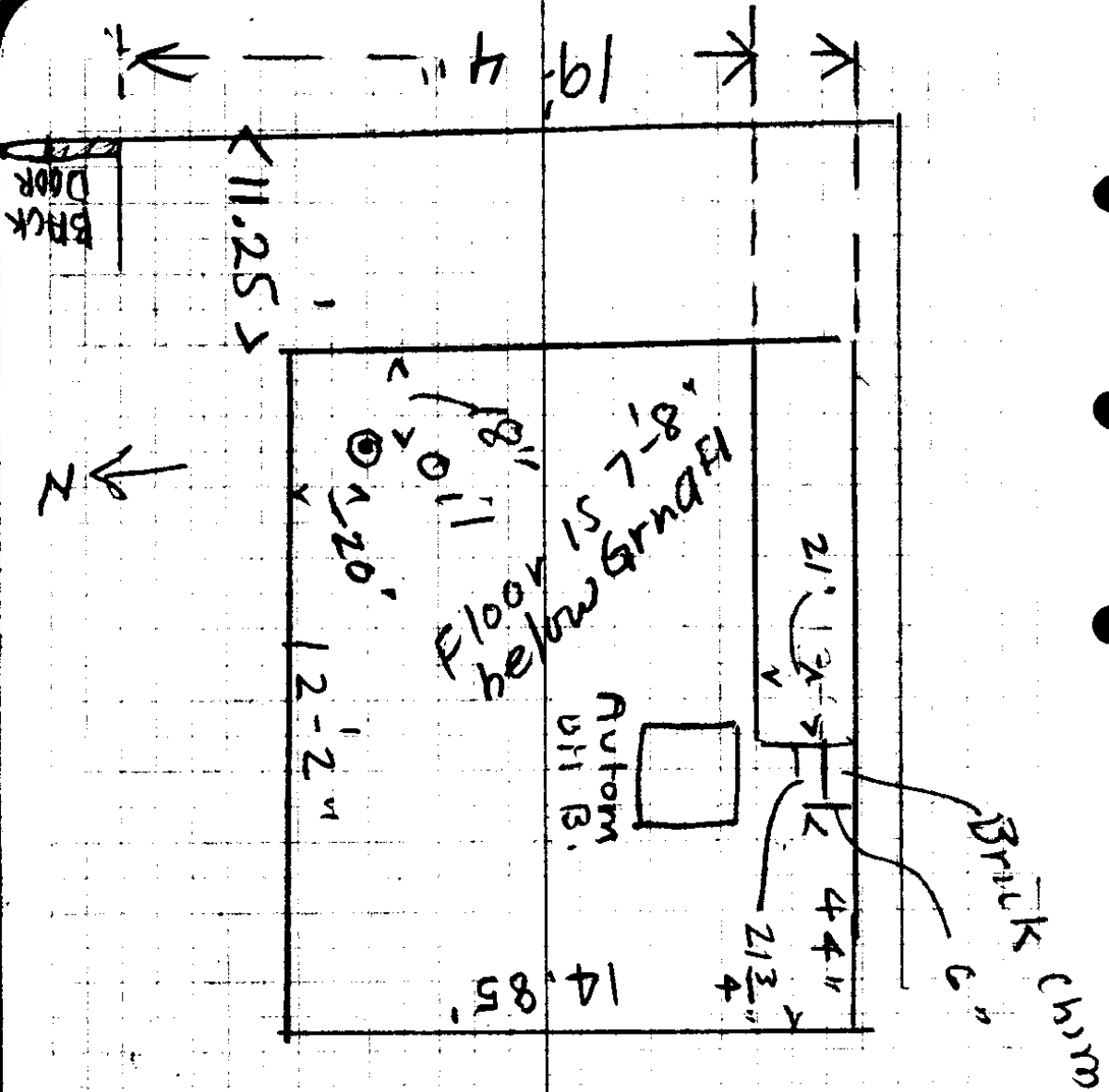


28/39

Sta	+ S	- S	Elev
			488.76
Sykes SW Cor		2.46	486.30
Curb opp "		2.70	486.06
Gutter opp "		3.1	485.66
Sykes NW Cor		3.69	485.07
Curb opp "		3.86	484.90
Gutter "		4.29	484.47
Crofts F.L at Ent		3.80	484.96
Back wak "		4.32	484.44
Curb "		4.45	484.31
Gutter "		4.93	483.83
Crofts NW Cor		5.07	483.69
Curb opp " "		5.20	483.56
Gutter " "		5.62	483.14
		3.01	485.75 x T.P.
		11.79	476.97
	4.06	489.81	485.75
F.L Crofts Jackson St Entrance		3.76	486.05
Sykes	3.87	480.84	476.97
		3.40	477.44

check Back on B.m.

23/39



Montgomery Ward Leases

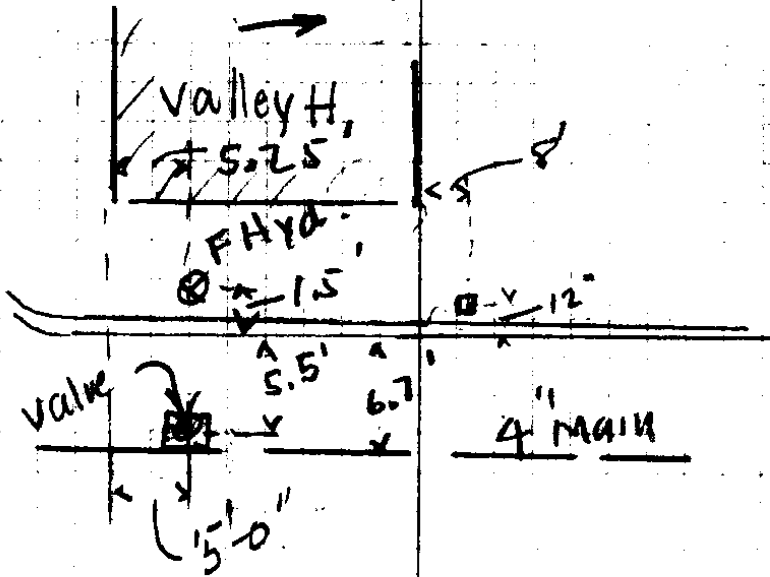
6/10-16-13

1936

Boyer

236

Sykes
Partial
Basement



+S HI -S Elev

477.44

4.64 482.08

4.97 Rim
to F.L.

4.35 477.73

MH Rim
Main
Dong

477.73
4.97

472.76 = F.L. Main
Dong.

488.22
6.1

482.12 - F.L. West + Main

482.12
472.76

9.36

482.12

1.71

480.4

383) 9.360 (~~3902444~~

786

1500

1149

3610

3447

163

202444

70

1.71080

383) 9.0062

786

70

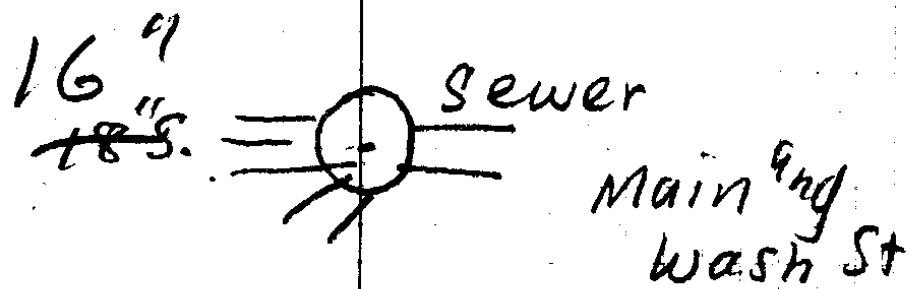
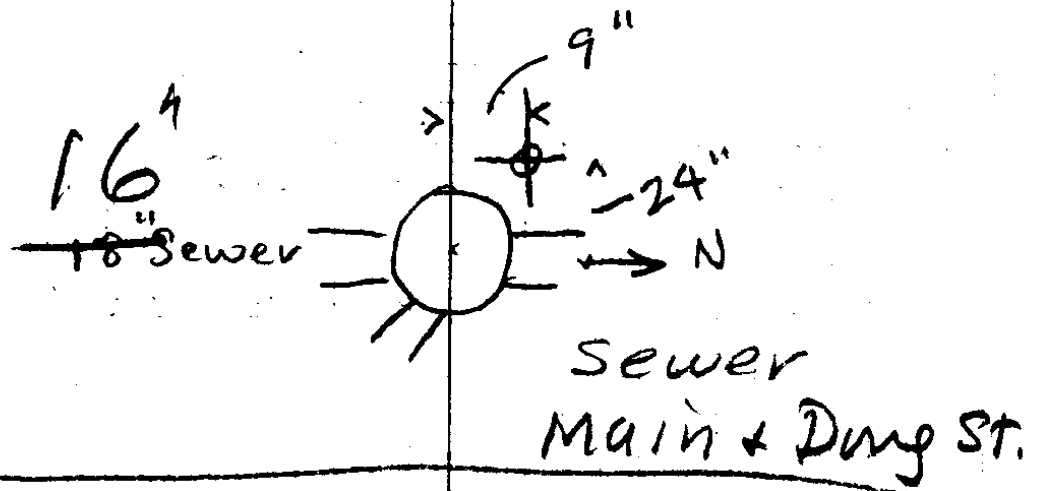
383

383

02

7.66

1/5) 9.8



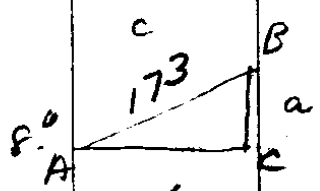
M. Ward Leases

682
 2046

1- 20.62
 120.62

40.4
 3
 121.2
 202.15
 121.2
 323.35

202.15



$\sin A = \frac{a}{c}$ $a = \sin A \times c$

.139
 173
 417
 973
 139

4
 8

13.78
 1.73
 4134
 9646
 1378
 23.8394
 18

24,647 = 24,01

\sin of \angle x Vert Dist = Diff. Elev

$\cos A = \frac{b}{c}$ $b = \cos A \times c$

173
 .990
 15570
 1537

46
 42
 12-
 7-4

1678.270

\cos of \angle x Vert Dist = Horiz Dist

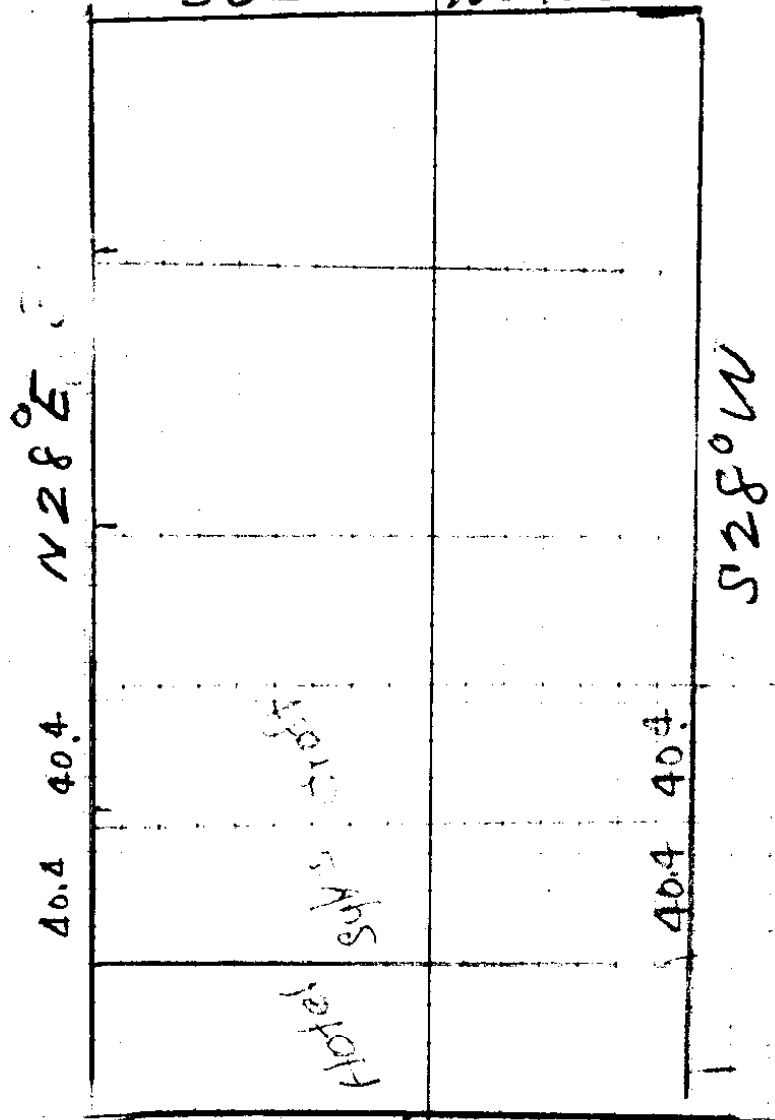
2.451
 6.1
 1.8
 102.8

Montgomery Ward
Leases

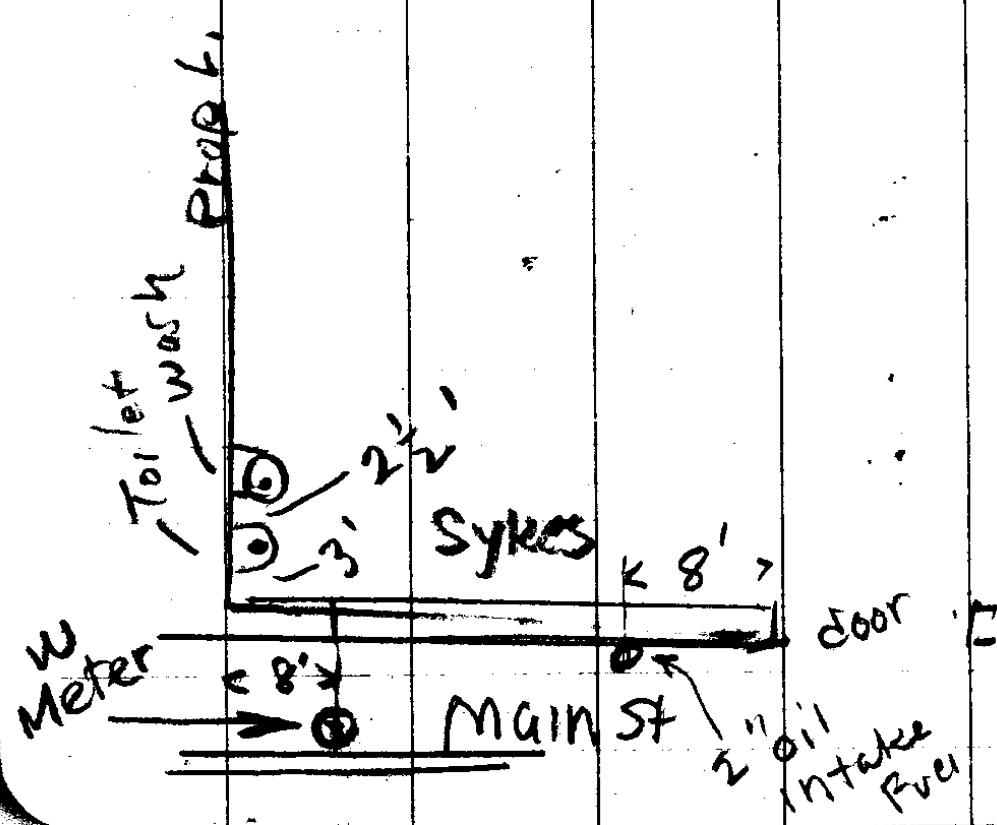
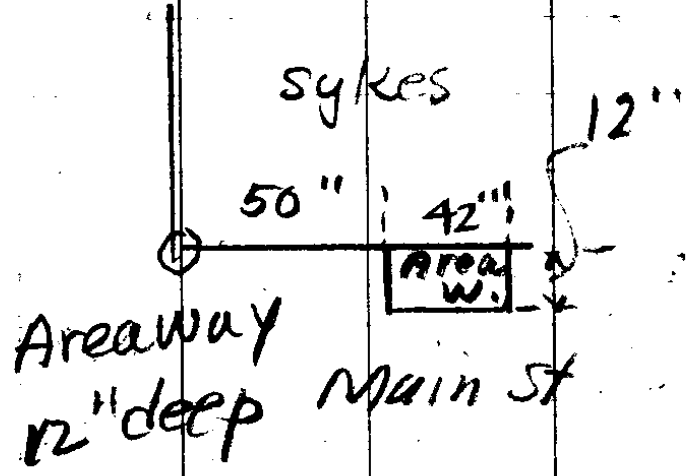
6/10-12 / 1936

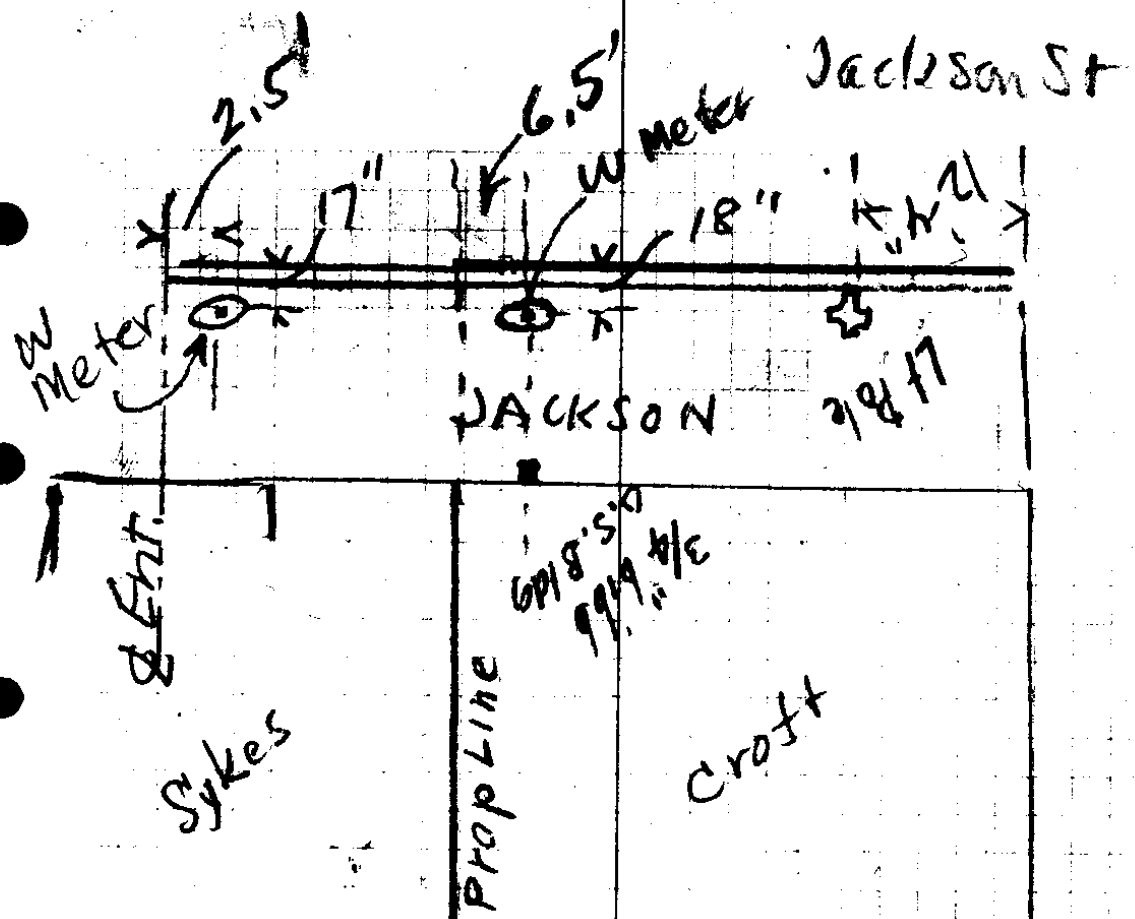
S62°11'E 100.38

Boyer



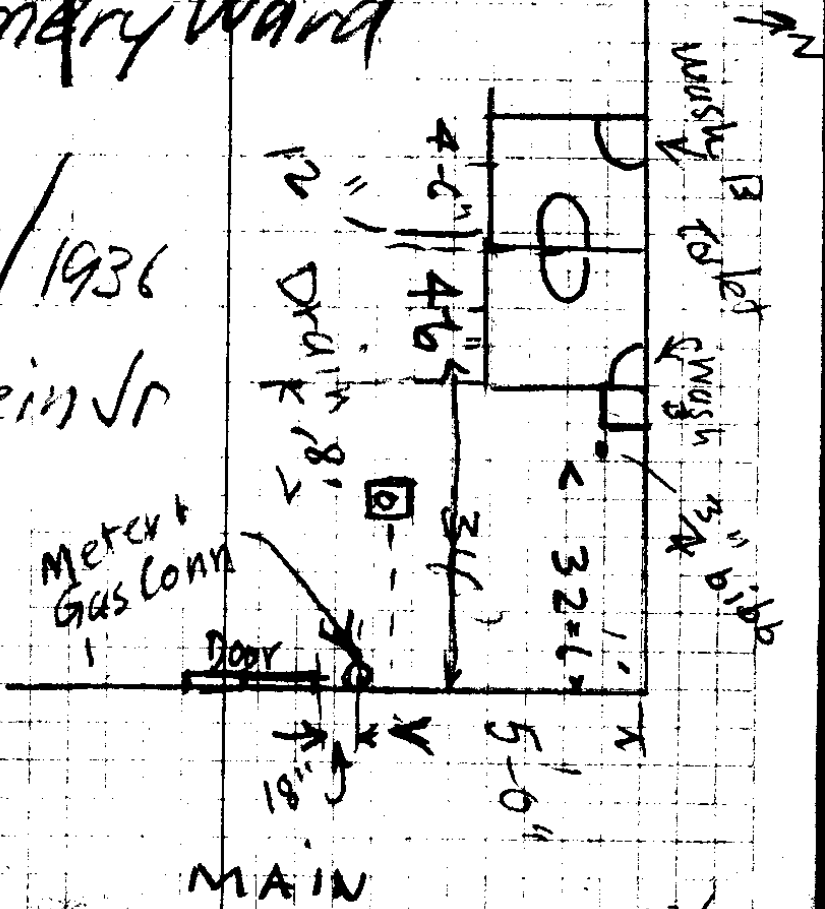
N62°11'W 100.53



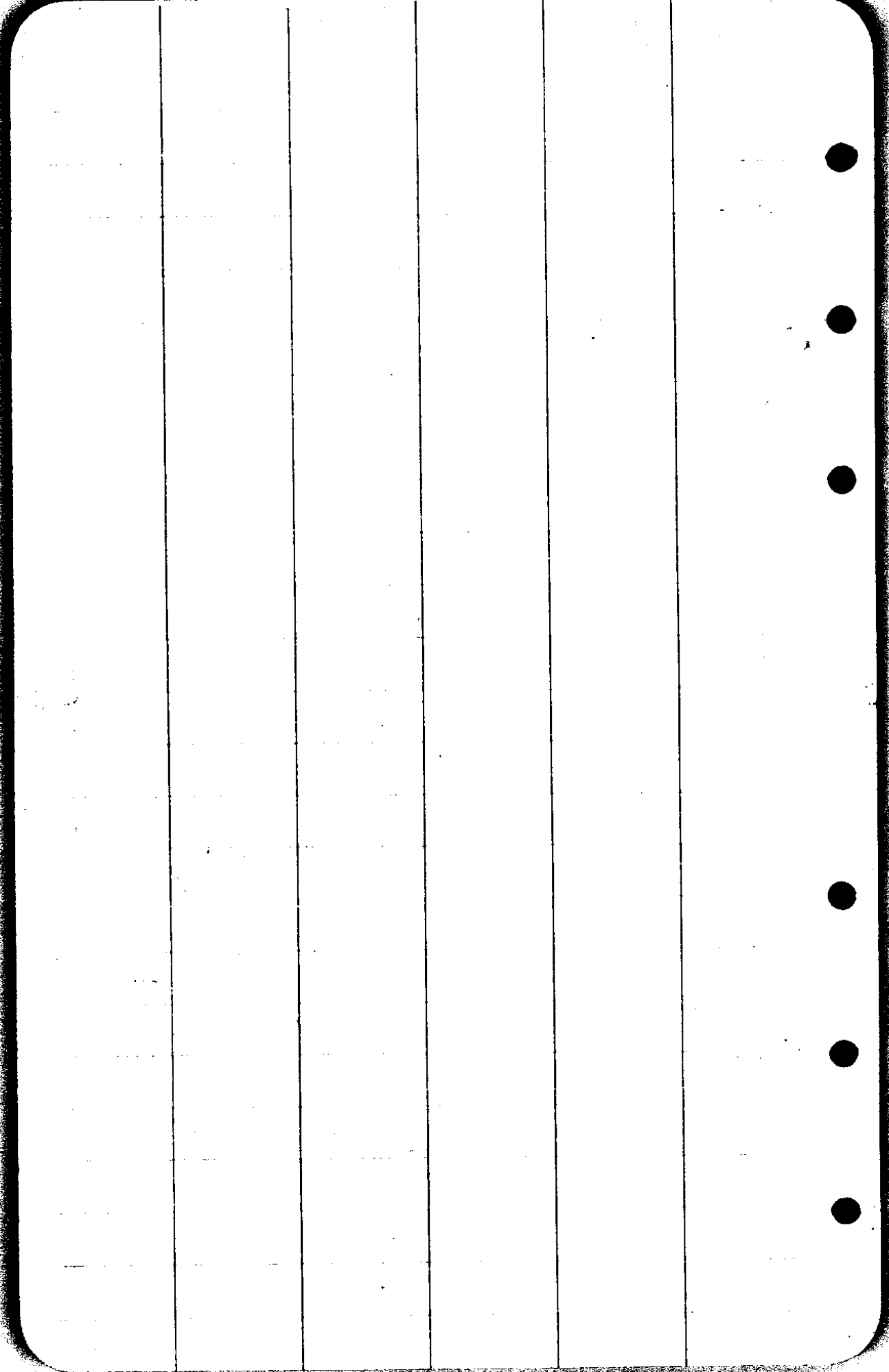


Montgomery Ward
Leases

6/10-12/1936
Boyer
H Epstein Jr



6/23/39



14-4 1/4

5 1/2

14-10 1/4

9 3/4

Montgomery WV
Leaves
June 10-13-1936
Boyer
H Eppstein Jr

Wall bet Sykes + Croft 17 1/4" - 2nd fl.
Sykes 9"
Crofts 8" th

16"

{ 21" 1st
Sykes
~~11"~~
2 1/2

40 - 21
3 - 10
2 - 1
3 1/2

30,395	40,395
3	3
94,185	126,185
2,0212	20202
293,305	323,205

383,15
60

323,15

Runway
 curb

202.12
 1212
 64

40
 3
 1212

CS FILE FOLDER

CONTAINS

MORE

INFORMATION