

90
15
25
35
45
55
65

1133
0225
5665

554° 26'E

N89-17E



WILLIAMS

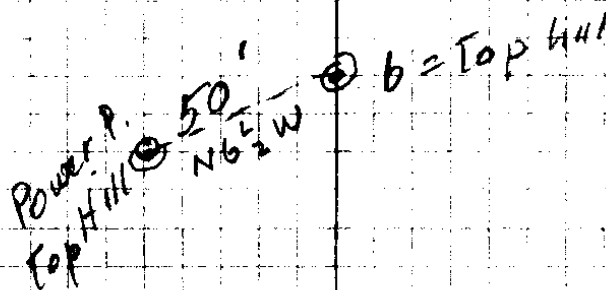
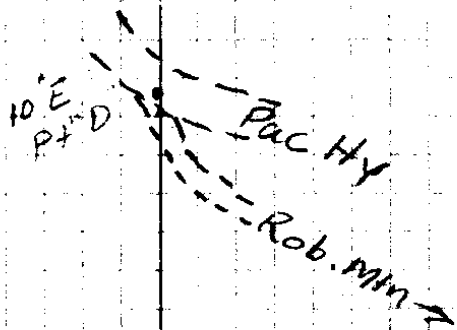
Sta	M.B. Δ	Hwy	Prop. Chg.
pt opp Drugstore	on Hy	Sta Dist	Horiz L SS
10' E of pt. D. on & Main St	S46 ^L 2E	Look this up on map	-5 ^o -15'
STOP SIGN (Point D) =	(10' W of) & Main St S36 ^o E ✓	from c	SD = 21.5
N Cor HS	S36 ^o E	1460'	-12 ^o -35'
	61.2 x	from c	El 34.0
	c'	1250'	-14 ^o -16'
	S35 ^o E ✓	from "c"	THIS IS 10' L
"		1080'	-15 ^L 2 ^o 78 ^L 2 ^o SS
"			El-222?
"		390'	-17 ^L 2 ^o
"			00.339.5
B on Line	S35 ^L 2E TOP Hill	45'	-8 ^L 2 ^o
(not on a) Line	N38 ^L 2E ✓ 837.9	74.0	+6 ^o
	S30 ^o E ✓	177.9, 180.0	+8 ^o -40' on 8' ✓
6+60	21 ^o -18'R	from 0+0	21 ^o SS El 34.0
		660	+19 ^o
1+73	El 124.0		Base Hill
	S48 ^L 2E	173'.0	+8 ^o 24.0
0+0	100	171.3.	10 ^o Side St.
			-2 ^o

June 2-1936 - 23-36 sheet 1 of 3
 Henry Shircliff
 A. Bayer

Pp 36-37

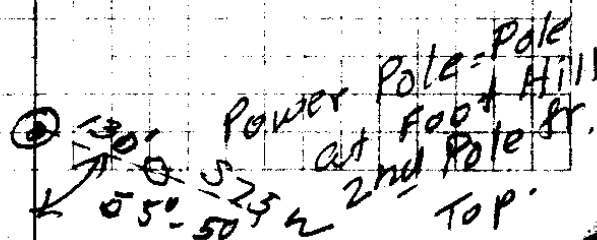
730

Reconnaissance Survey



23/36

0+0 →
 old TIM
 Tub



Sta MB

Stadia Horiz
DIST L

side
SL

"J" not on Line

S 8 1/2° W 1200' fr. J + 10°-30'

I

on line
H = Fence E + W = 20' N

S 9° W

250'
fr. H + 42°

ck
100' W

on line
G

S 6° E

190'
fr. G + 5°

SS = 9°
11' below
"H"

set up

on F, not on Line

S 37° E

440'
from F + 4°-40'

12 1/2° SS

F' on Line

S 8 1/2° E

63'
from F + 24 1/2° on 5 1/2°

F, not on Line

1160'
from F

S 26° E

900' + 1°-15'

L Bank Ck - Elev old RA

Same as at E - m. ck red 75'S.

on old
RA on R
Bank ck

S 27° E

270' - 3 1/2° on 15.5'

S 27° E

108.0' - 8.5°
3.5' below
at E

"E"

From 10' of D

S 46 1/2° E

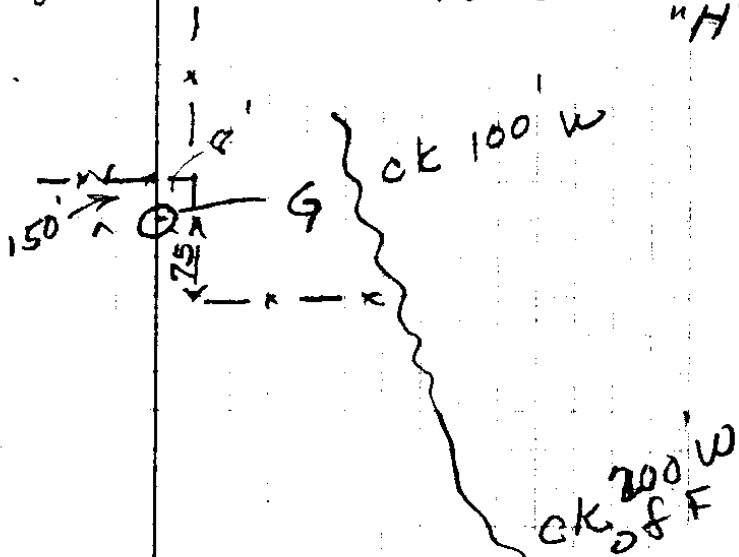
1200' - 2°-15'

10E of D

Reconnaissance Survey

12
62
—
58
2
—
116

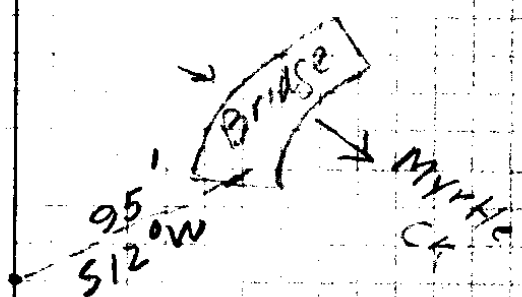
Note same $4\frac{1}{2}^\circ$ grade continues 800' S & W from "H"



Note 85' back of F N is Edge Flat = 70° N on 15°

11.0
9.3
—
20.3
10.15

10
193
27
27



Sheet of 3 Myrtle Cr.
 Sta M.B. Stadia Horiz Side
 Dist Angle Slope

S49°W on Pac Hy.

Center Curve Pac Hy - opp - Dr Maxson Hts.

"P" 974 From P -1°
 2500' From M -3° from M
 "O"

N Fence
 S40°W 1100' From M -6°-15'

"M" S40°W 250' Fr. "M" -10½° "
 El. 179.0 22½°

"L" S40°W 85' -9° on 5' S
 El. 142.3 SS=25°

S35°W 425' Fr. K -12½°
 K on Line - 75' N of K + S Fl. + 25' S

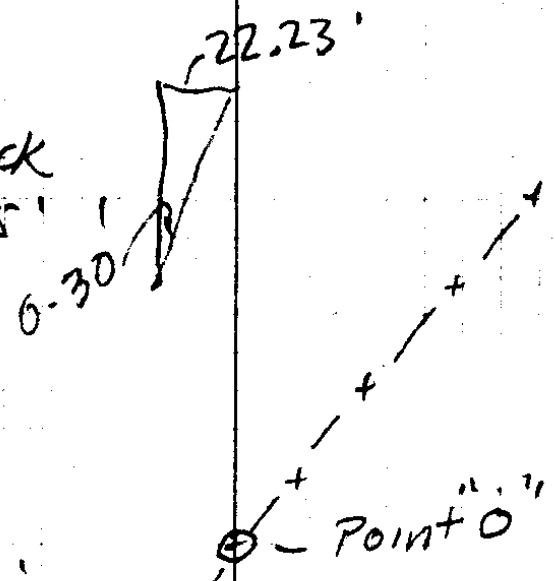
"J" not on line
 S88½°W 180' -2°

2
974

Reconnaissance

Note 20.50 S40°W
from M = CKC
NW - 10' below

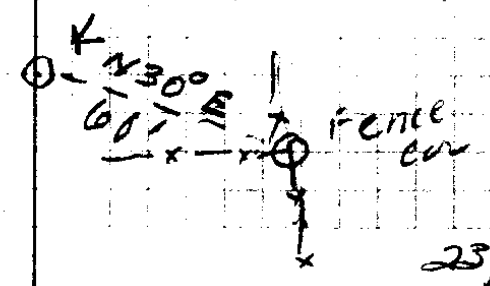
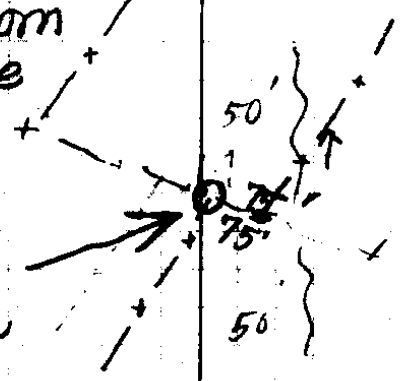
From "P" back
to CK = 2°15'
vert L

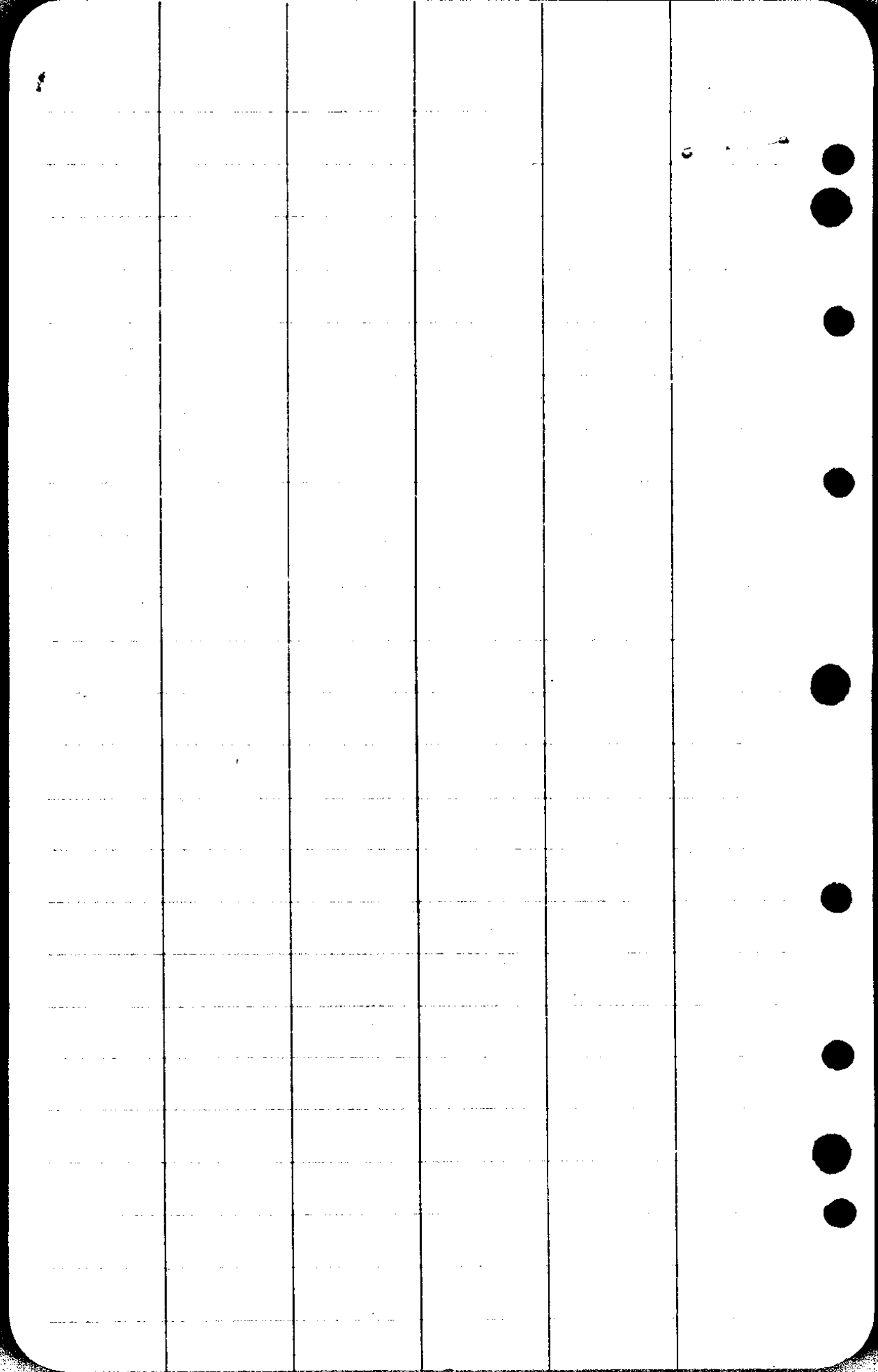


126.75

Note - MB is
S40°W from
M. to Curve
in Pachtly

Point
Fence cov





CS FILE FOLDER

CONTAINS

MORE

INFORMATION