

Tiny Voltairic Gurney

Sec 2<sup>7</sup> 27/3W

V23 E35

Note:

On this work for  
Tiny Voltaire Gurney the  
line was started at the  
Sec Cor of 1-2-11 & 12  
and run N. one mile  
to Sec Cor of  $\frac{35}{2} | \frac{36}{1}$  265  
275

R3W

the  $\frac{1}{16}$  th corners (2) were  
set on this N & S line  
and points on line  
in a few places N  
of the  $\frac{1}{4}$  cor.

The image shows a page of graph paper with a grid. A vertical line runs down the center of the page, and a horizontal line runs across the page near the top. The grid is mostly empty, with some faint markings in the top-left corner.

23/35

21+72.5

242.8 7° 50'

240.6 ✓

.991 ✓

19+31.9

27.7

380.0

Flat

380.0 ✓

CROSS  
LE BONTES  
N+S 8410

15+51.9

289.8

6° 30'

287.8 ✓

22.2

.993 ✓

F=1264.1' ✓

151.2

Flat

151.2 ✓

E

300.0

10° 30'

.983 ✓

294.9 ✓

D

North

279

7° 00'

.992 ✓

276.8 ✓

SW of  
HS.

C

300.0

+ 8° 00'

.990 ✓

297.0 ✓

B

91.5

+ 15° 05'

.965 ✓

88.3

A

181.7

+ 30° 50'

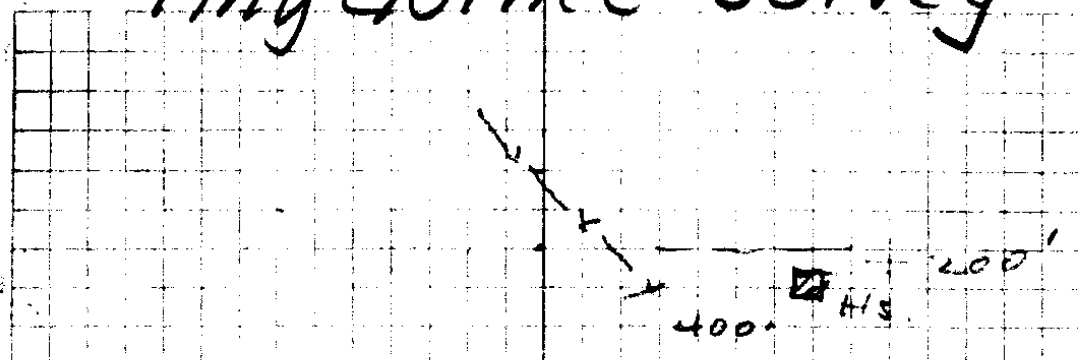
.855 ✓

155.9 ✓

040

MAR 30-1936

# Tiny Gurnee Survey

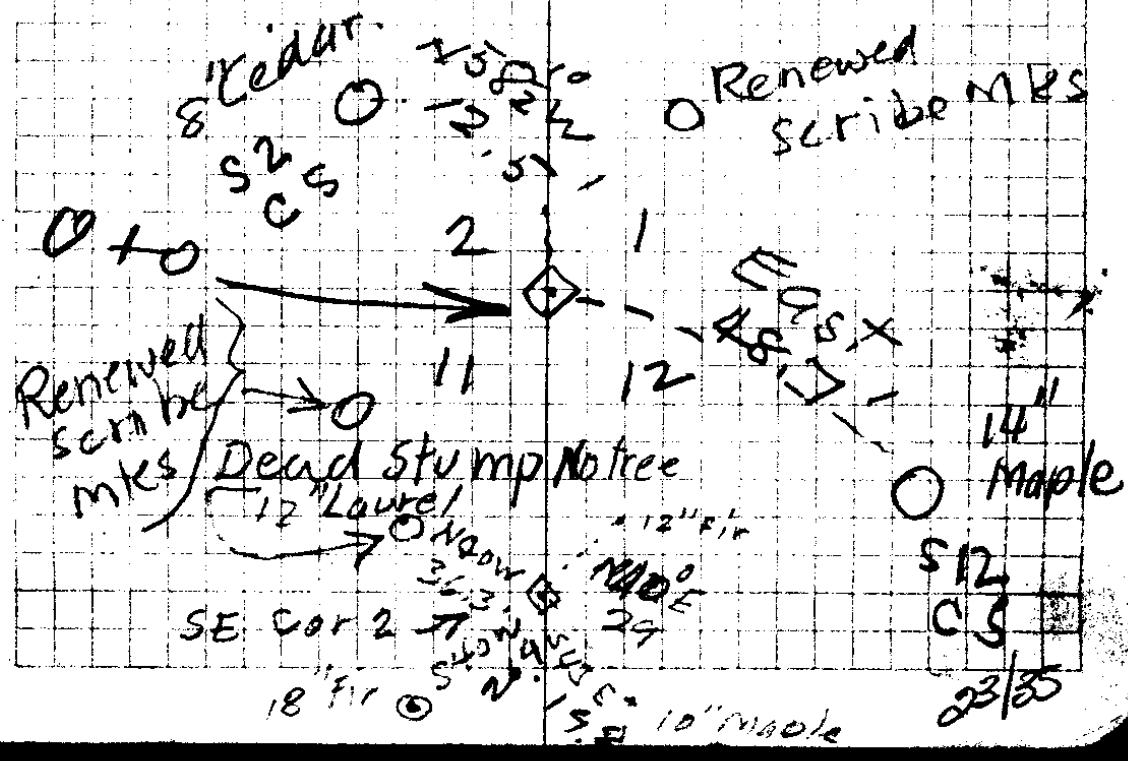


At 1316.3 =  $\frac{1}{16}$  cor = 18.8' E

T 27 S  


---

R 3 W



D = marked = 7 + 37.8

101.5 Flat

C 6 + 36.3

300.0 5°-45' .995 = 298.5

B 3 + 37.8

39.0 Flat

A 2 + 98.8

300.0 + 5°-00' .996 = 298.8

4 Cor

$$\frac{2632.6}{2} = 1316.3$$

$$\begin{array}{r} \text{Tot MSmt} = \\ 2654.9 \\ \underline{223} \\ 2632.6 \end{array}$$

Opp. 2 Cor = 2632.6

113.4 8°-45' 98.8 ✓

25 + 42.9

95.4 19°-25' 89.9 ✓

24 + 53.0

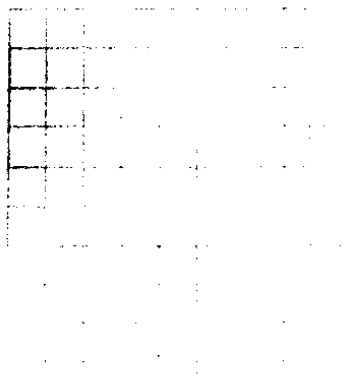
300.0 20°-50' 280.5 ✓

Both hill = 21 + 72.5

N<sub>0</sub> = 364

35.10' 43.2

31.1

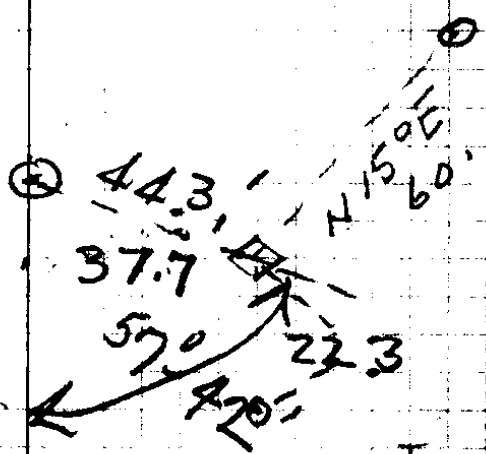


Burnt  
40"  
Fir

563° W  
46.2'

Burnt  
40" Fir  
Bark  
Blaze  
N 51° E  
80'  
4 Cor.

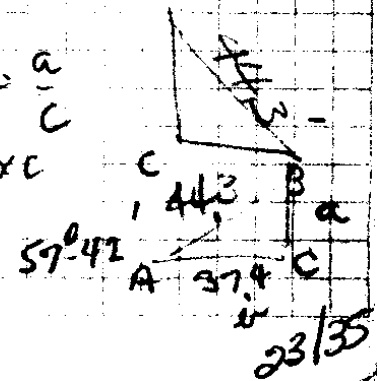
Ino  
La Bente  
+ T. Gurnee  
Stump  
Oak



$\tan A = \frac{a}{b}$

$\frac{.845}{44.3} =$   
 $\frac{253.5}{3380}$   
 $\frac{3380}{374.335}$

$\sin A = \frac{a}{c}$   
 $a = \sin A \times c$



23/35

~~35/36~~  
~~2/1~~

25+74.6 = Opp Sec cor see  
150.7 flat Next Pg.

24+23.9  
164.0 5°-00' 996 163.3

22+60.6<sup>v</sup>  
158.7 6°-00' 944 157.7

21+02.9  
169.8 10°-00' 985 167.2

1935.7  
210.0 8°-35' 989 207.7

Top stump = 17+28  
269.5 9°-50' 985 265.4<sup>v</sup>

{ 14+62.6  
G = 1462.6' N 1/4 cor marked "G"  
290 flat 290.0<sup>v</sup>

F = 11+72.6  
240.0 9°-30' 986 236.6<sup>x</sup>

E = 9+36, 07<sup>6</sup> 200.0 15°-00' 991 195.2<sup>x</sup>

12" B.O S 26 E 180 118.8  
 12" N O S 36 W 202 30  
 18" B.O N 10° E 85 5 1/2  
 4" B.O. N 45 W 113 24.5

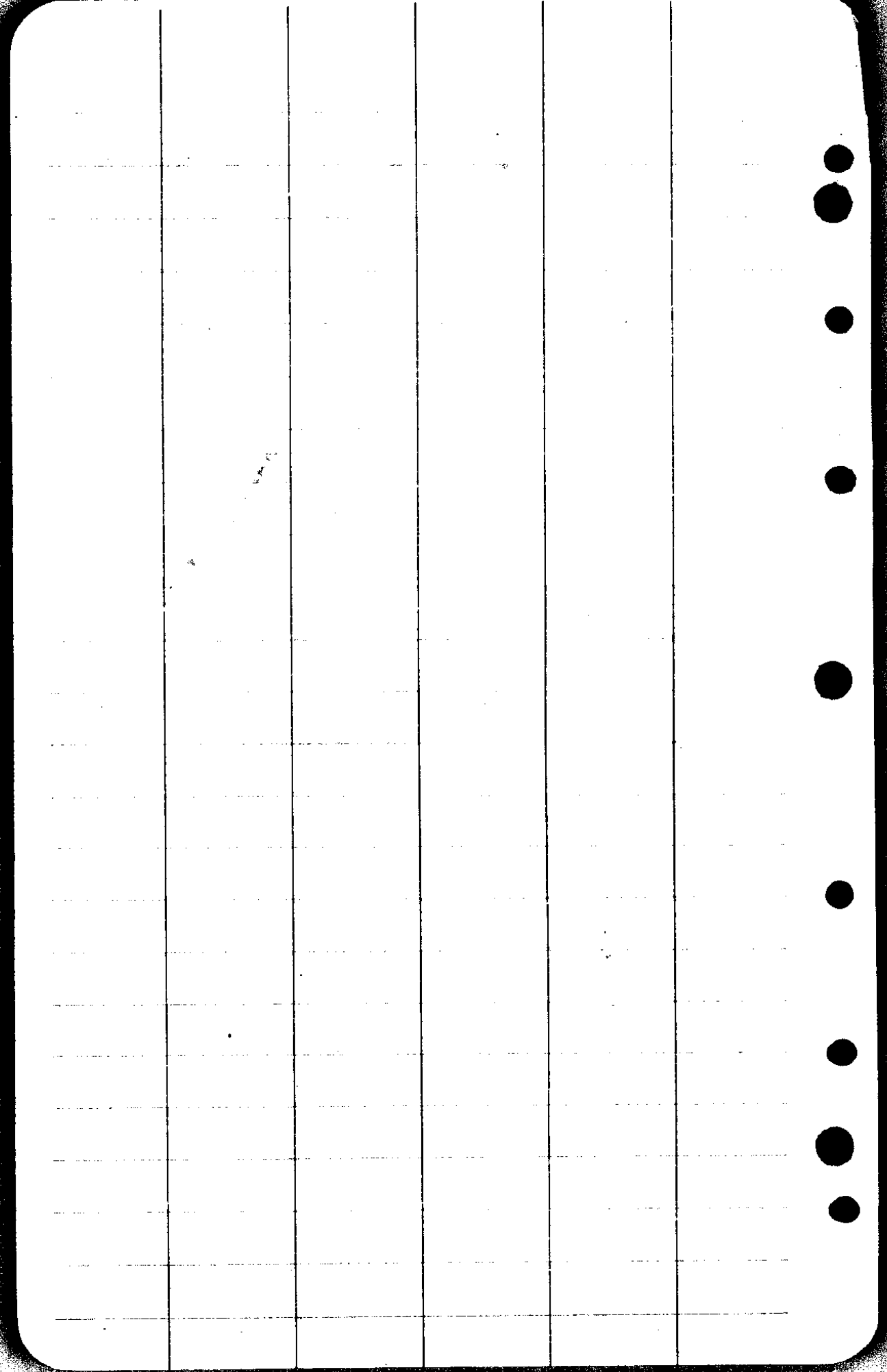
5240

$\begin{array}{r} 113 \\ 66 \\ \hline 678 \\ 678 \\ \hline 74.58 \end{array}$	$\begin{array}{r} 186 \\ 66 \\ \hline 1080 \\ 1080 \\ \hline 11880 \\ 202 \\ 66 \\ \hline 1212 \\ 1212 \\ \hline 133.32 \end{array}$
---	--

Note  
 Set  $\frac{1}{16}$  Cor  
 1276.5' N of  
 $\frac{1}{4}$  Cor.

1276  
 1122  
 104

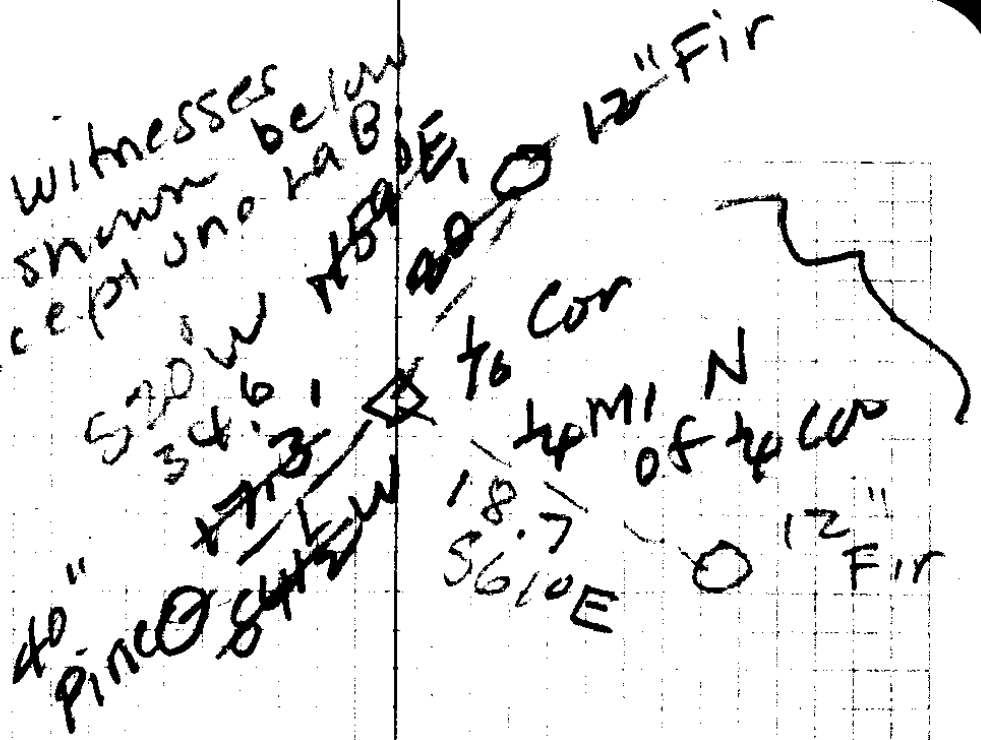
23/35



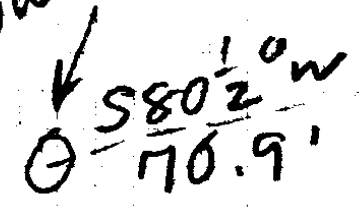




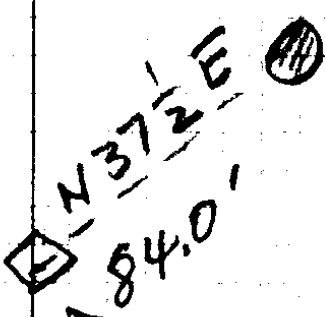
All witnesses as shown below except Jno LaBonte



12" Oak stump



36" Pine stump



Jno LaBonte  
T. Gurnee  
J. Blackford  
O. J. Croice  
SS "

16 1/4 Cor  
1/4 mi N. of  
SE 1/4 Sec

