

A Boyer & Chain
Wayne Shaw.

Apr 7-'36
23-21

For Coen Lumber Co.

Find Street Monument

↔ Jackson St ↔

Block 21

Roseburg

Meets & Bds. Desc.
Beg at SW Cor Lot 1,
Blk 21 - Roseburg, th.
N. along W. Line
Lots 1+2 101.25,
th E. by 40' th Southly.
parallel to W. Line
Lots 1+2 101.25
th W. E. ly along
S. Line Lot 1, to
Beginning.

Note 3/4"
Iron Pipe
Driven at
all corners
of Property.

Washington St

Find Street Man.

↔ Kanest ↔

Find street Monumt.

Find tack
1/2" E

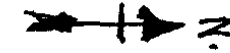
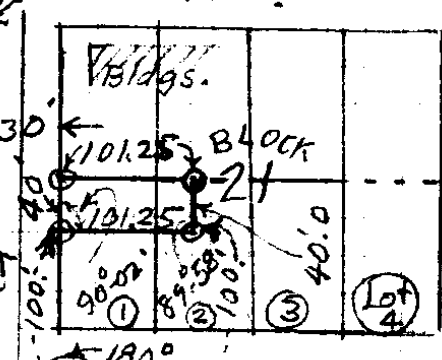
Cass St

Find Street Monument

No Street Monument

↔ Chadwick St ↔

Find Cupped Tack -
1/2" East, on ↔
Chadwick St 41' → 30'
as established 4/7/36



180°-00'

Chained 280.0

Douglas St
No Street Monument

Centered bet
Curbs

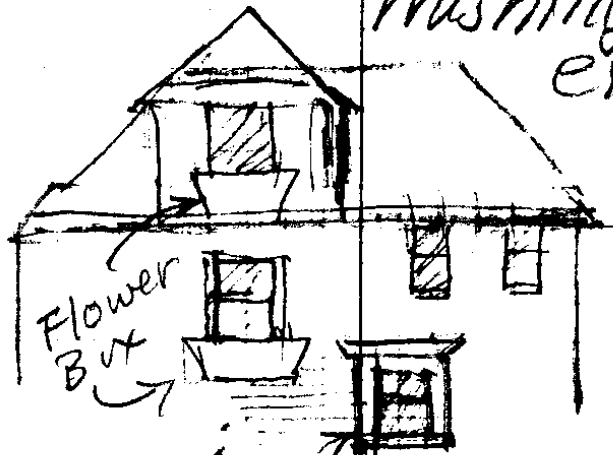
V 23
E 21

23-21

Apr - 7-'36

N.B.

House on
Washington St
extended
to west



Edge of
vert 1x6"

Washington (Ed. W. J.)
bet Chadwick + Jackson.

Fore Sight
The Above
Sketch shows
E of Washington
St on W. End
bet. Chadwick
and Jackson Sts.

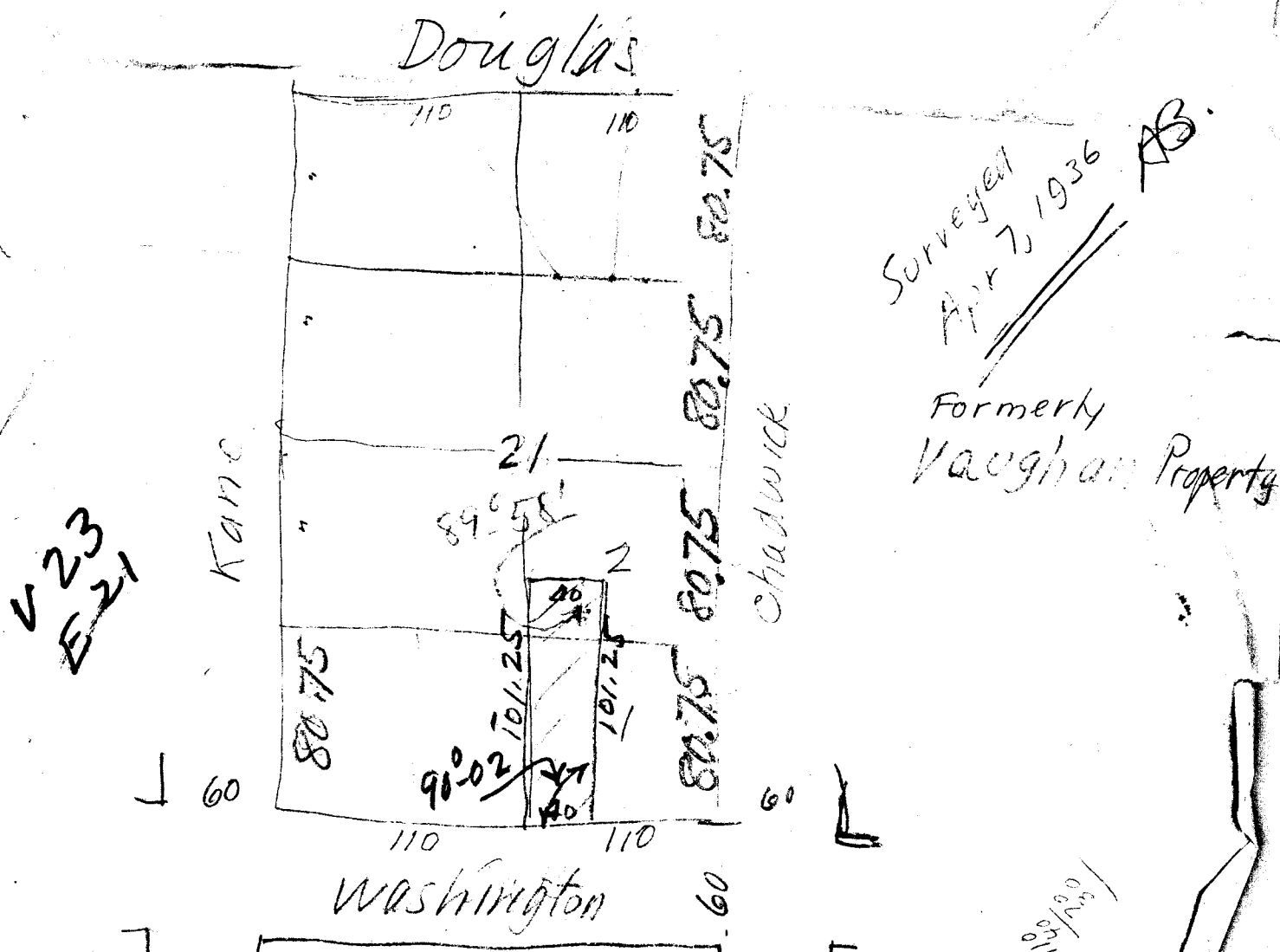
V 23 21
1/4

Apr-2-'36

Beginning at the S W Corner of Lot 1 of Blk 21 of the City of Roseburg, Douglas County, Ore. as shown by the Official plat there of on file and of record in the office of the County Clerk in and for said County, running thence northerly along the west line of lots one and two of said Block 101.25, thence easterly 40 ft, thence southerly parallel with the west line of lots one and two of said block 101.25 feet, thence westerly along the south line of said lot one of said block 21 to the place of beginning.

For Mr Coen.

When we can get to it.



89-58
9002-

180
90
03
89-58

