

DIVISION OF PROPERTY
 OWNED BY
 H.A., J.D. & L.S. Weaver
 February 1936 Scale 1" = 300 ft.

23-13

H.A. } Weaver Survey.
L.S. }
J.D. }

DIVISION of Weaver Ranch
Myrtle Cr.

Feb. 12 & 13, 1936

A. Boyer
N.E. Richardson

Sec 32, 33 T 29 S R 5 W
" 4, 5 30 " "

H.A. Weaver Survey. ^{SEC 32-30} ^{T 295. R 5W} Corr.
 L.S. J.D. ^{SEC 4 + 5} ^{T 305 R 5W} Dist.

30
 offset
 of
 west

M. Brq.	79.8	Flat		
	64.0	"		
	300	-14 ¹⁶ / ₂	268	290.4
↓				
North	79.8	Flat		
	251.2	-17°	956	240.1
	99.9	Flat.		
	148.6	Flat.		
North				
	238.5	-27°	891	212.5
	60.6	Flat		
North				
	136	Flat		
	178.5	-31 ¹ / ₂	852	152.1
	97.6	-30°	866	84.5
2+24.4				
North	24.4	Flat		
0+0 =	SE Cor	DLC 37		

Feb-12-36 -

Aboyer Inst

NE Richardson

2 Rrch

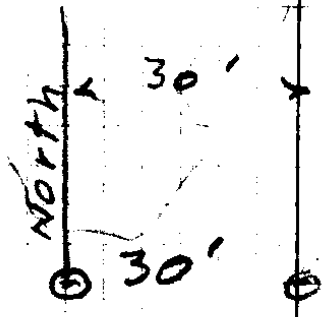
H ch

Alan

Jack

Weaver Axes.

①



Iron Pipe
Brg Trees

SE Cor. DLC 37 TBS
R5W

23/13

Weaver Survey

②

HA. LS 9th J.D Weaver

Secs 32 + 33 - 29S 5W

" 4 + 5 30S 5W

Iron Pipe Riv Bank

CC = 1
N30°24'W 361.0

N30°W = Mag Bg.

Angle Pt. A

1049.4

CC =
N62°22'W 47 Flat

300 Flat

N63°W 300' - 5° .995 298.5

N63°W 450 Flat

N63°W 300 - 6½° .993 297.9

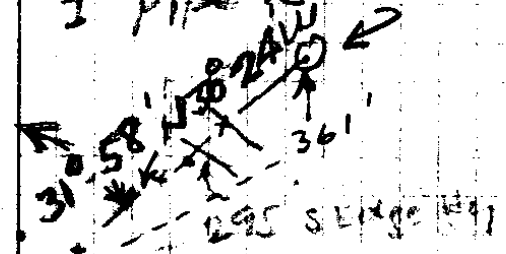
176.1
~~181.0~~

Feb 12, 13, A Boyer π
 1936 W E Richardson

(2)

N 30°-22' W 55.6
 cos sin N S E W
 .862 .506 47.9 28.1

1 Pipe R Bank River



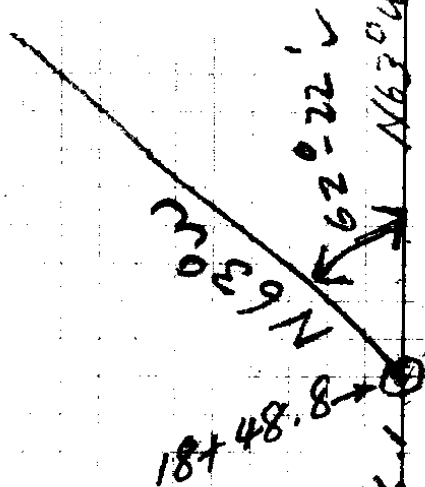
1 Pipe - Point A

Pipe for
 both Msmt (Msmt in
 Bottom of
 Field)

Tot Dist = 1049.4
 N 62°-22' W 2446.4

47' N 63° W M.B.

62-22
 31-02
 21-20



Iron Pipe

181.0
 4.9
 176.1

23/13

Feb. 12 & 13, 1936
A Boyer
N E Richardson

3

23/13

④

Weaver Survey

HA LS + J.D. Weaver

T 29 + 30 S R 5 W

Feb 12, 13 ↑ Boyer
1936 Richardson

(4)
S 54° 49' E
N 54° 49' W
S 54° 49' E

165.4
1697.
110.
142.6
218.6
276.6
1950.2
47.4

Corrected Dist = 1947.4

S-Line No 37
DLG Line

Point C

CC = S 54° 49' E

S 54° 49' E
c = 218.6
232.8
154.7

110.0 Flat

1097.0

154.7

154.0 on
965
200
939
223.4
922

Flat

N 54° 49' W

S 54° 49' E
CC = S 54° 49' E

c = 102.6

105.4 on

134.0

973

90°

375'

CC S 35° 11' W

300'

536° W

90°

Point B

144
180
54
90
36

CC = N 88° 49' E

East

123.5 Flat

23/13

Feb 12 + 13 - 1936

(5)

Boyer Richardson

176° 45'
90

86 - 45

171.3

.8774

1199.1

1199.1

1370.4

15023.0

118.9

920.2

2378.0

1070.1

10438.8

102.5
979.2

922.5

717.5

922.5

10034.75

N 86° 45' E
4-30

91-15

150-60

91-15

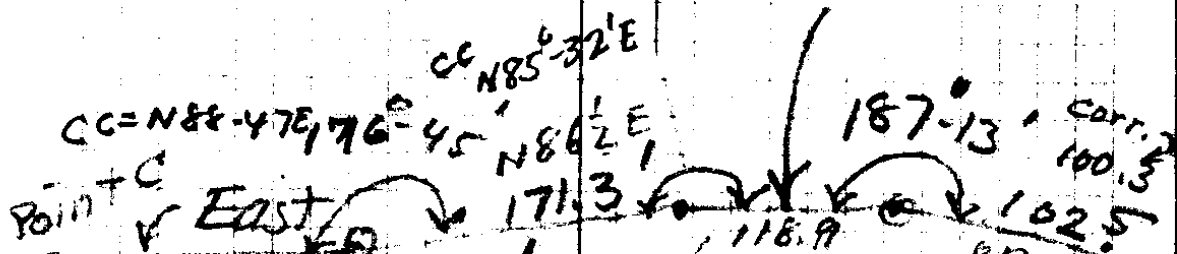
S 88-45 E

7-13

S 81-32 E

C. B
A C
cos A = c/c

184° 30' corrected = 109.4



123.5
Flat

180

176-45

3-15

94-15

86-45

N 86-45 E

4-30

91-15

150

88-45

on 28
150.2
corrected
N 86-45 E

118.9
on + 23
S 89-45 E
S 88-45 E
CC 589-38 E

SE cor
DLC 37

23/13

⑥

Weaver Survey

Sec 32 + 33	29S	R 5W
4 + 6	30S	"

232420.41
 72.25
 232492.67 (482.1)

88
 704

2092
 2602
 1424

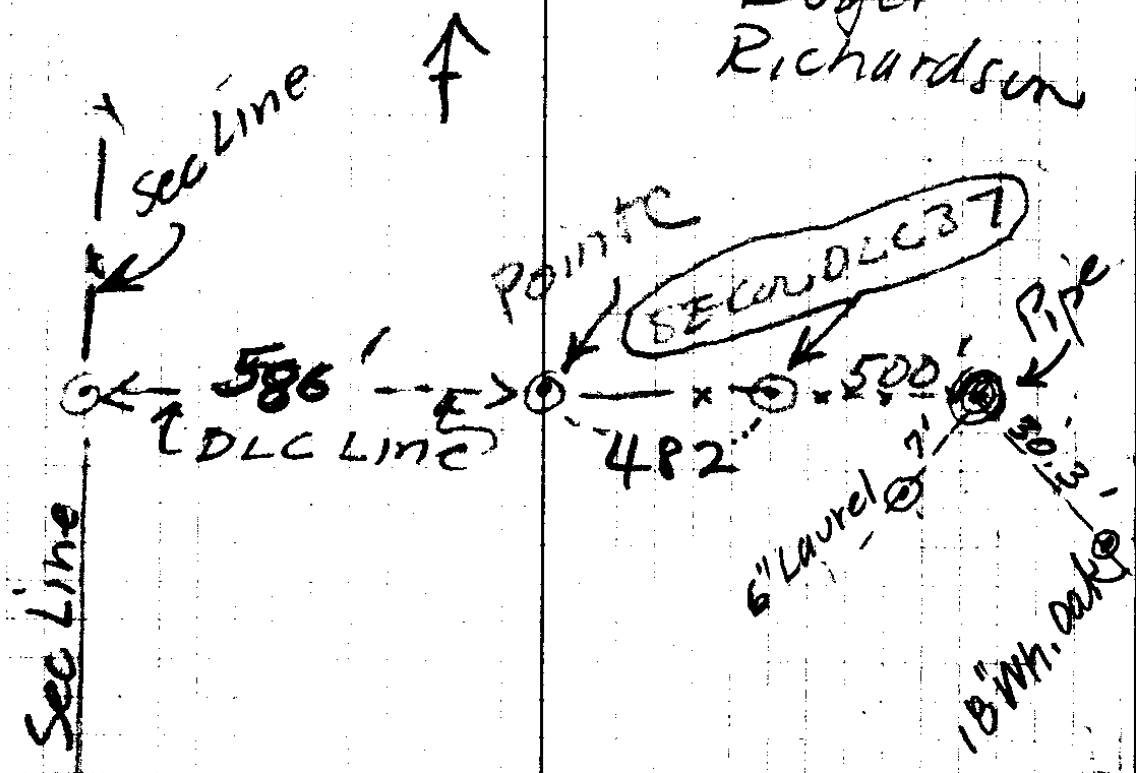
16867

962
 984

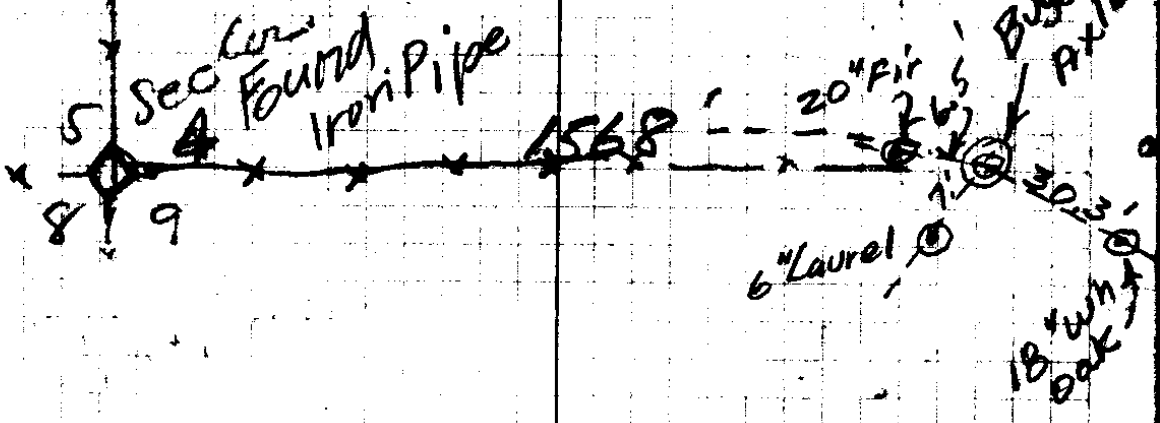
Feb -12, 13 - 1936

(6)

Boyer
Richardson



482.	5
586	1
<u>500</u>	5
1568.	(2)



23/13

CS FILE FOLDER

CONTAINS

MORE

INFORMATION