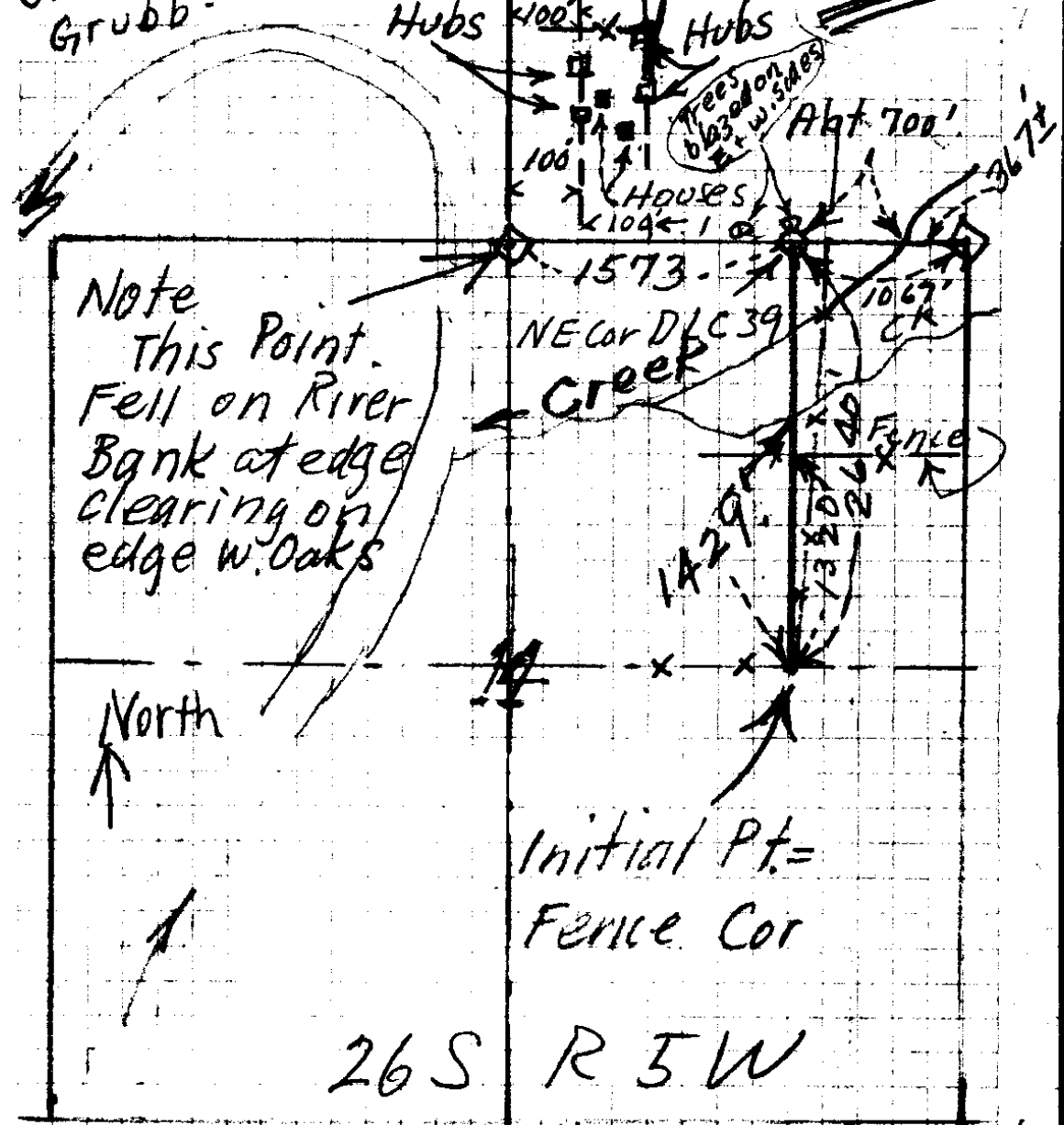


A Boyer 23-9
Jack Wolford
Grubb.

Needle
Line
Hubs
Fence
In Question



Note
This Point
Fell on River
Bank at edge
clearing on
edge w. Oaks

North
↑

Initial Pt. =
Fence Cor

26 S R 5 W

Jan-3+4-1935 Rain.

Note:
Found no witness trees any-
where - Looked at NE Cor Sec 11, at
NE Cor DLC 39 and at N 1/2 Cor Sec 11
Looked in Radius of 500' at each point

The purpose of survey was to
determine approx location of
fence shown at top of this
sketch

while No corners could be found
topography fits gov't notes

C. & FILE # 23/9