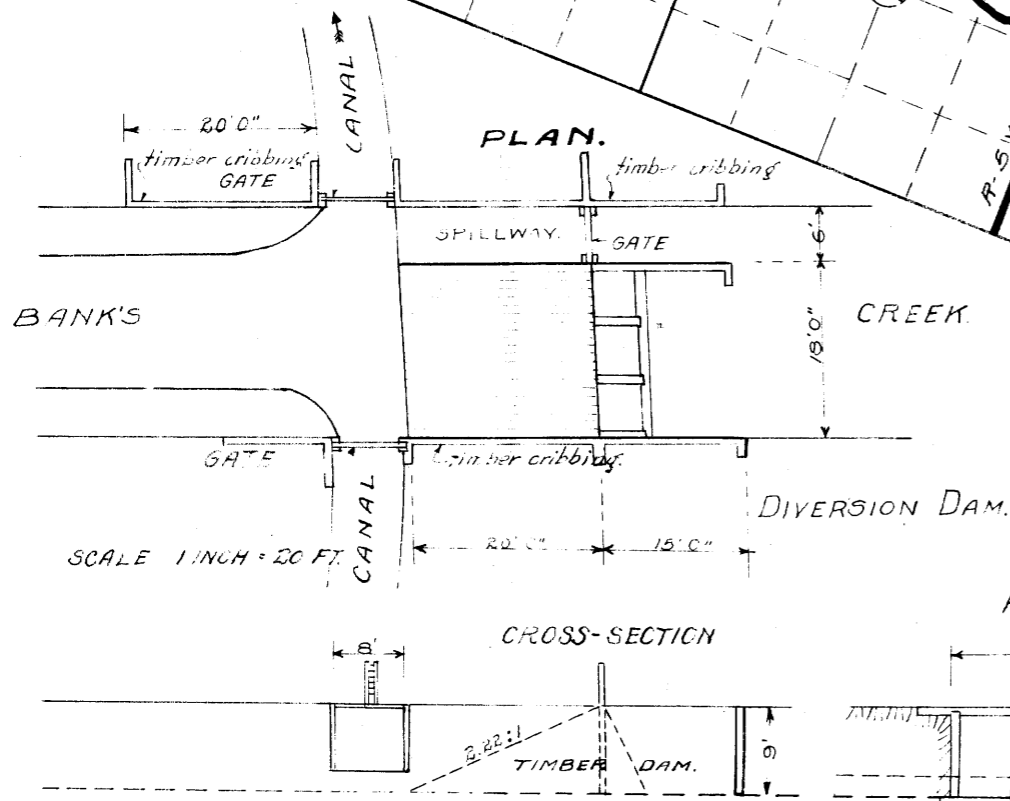
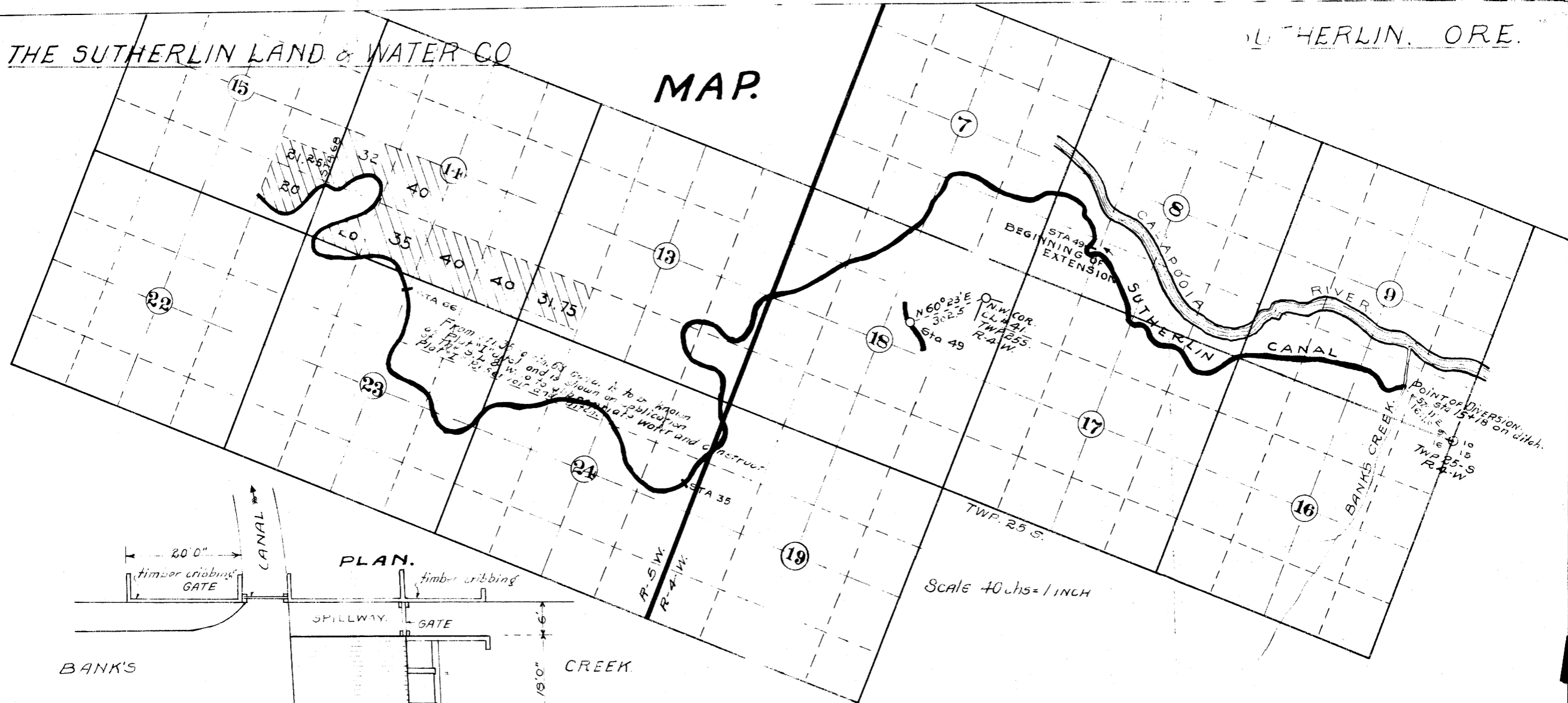


THE SUTHERLIN LAND & WATER CO

SUTHERLIN, ORE.

MAP



Scale 40 chs = 1 INCH

CERTIFICATE OF SURVEYOR.

I, L. G. Hicks, Chief Engineer of The Sutherlin Land and Water Company of Sutherlin, Douglas County, State of Oregon, do hereby certify that this map was made from notes taken during an actual survey made in my immediate supervision the 26th day of August 1910, and that it correctly represents the works described in the accompanying application together with the location of streams and other ditches in the immediate vicinity and has written thereon the area in each smallest legal subdivision which it is proposed to irrigate.

SUTHERLIN, ORE. FEB 3-1911.

L. G. Hicks
CHIEF ENG. S. L. & W. CO.

CS FILE FOLDER

CONTAINS

MORE

INFORMATION

CS FILE FOLDER

CONTAINS

MORE

INFORMATION