

Troxel Survey.

Oct 31 } 1928
Nov 1 }

Trapezoid

Hub	Dist	L	CU	M.C.	Slope
12	212 ²	157° 26'	N 21° 3' W	N 24 1/2° E	
		78 43 R			
11	189 ³	65-9	S 80° 14' W	S 78° W	
		32 34 L			
10	238 ²		N 67° 12' W	N 66 1/2° W	
		120 21			
9	217 ²	10 R	N 73° 22' W	N 71 1/2° W	
		101 16			
8	320 ⁶	50° 38' R	S 56° 0' W	S 57° W	
		10 17			
7	186 ⁰	5° 4' R	S 50° 5' W	S 52 1/4° W	
		91 56			
6	176 ⁰	45° 58' R	S 4° 53' W	S 5 1/2° W	
		25 46			
5	187 ³	12° 23' R	S 7° 30' E	S 8° E	
		4 15			
4	291 ⁶	2° 8' R	S 9° 38' E	S 9 1/2° E	
		180 53			
3	269 ⁰	90° 27' L	S 80° 49' W	S 81° W	
		17 37			
2	290 ⁵	8° 49' L	S 89° 38' W	S 89 1/2° W	
		180 44			
1		98 22 L			
			S.	S.	
				Var. 22° E	

78 43
 80 14
 119 60
 158 57
 21 3

67 14
 32 34
 119 60
 49 46
 580 144

56
 50
 119 60
 106 38
 73 22

Along E. edge Cornfield

Cor Cornfield

B.S. 11 to 4 33 ft from E. line fence

N 43° 14' E Hub 1 - Cor Post Mkd NE Cor.

L		R	
90	22	2	8
8	49	12	23
90	27	45	58
32	34	5	9
222	12	50	38
12	2	6	10
201	9	78	43
21	3	201	9
		3	3

67 14
 32 34
 119 60
 49 46
 80 144

119 60
 90 52
 59 38

90	22
8	49
90	27
32	34
222	12
201	9
21	3

2	8
12	23
45	58
5	9
50	38
6	10
78	43
201	9
3	3

4			↙		
3		200° 14' 100° 6' R		59° 54' E	
(17) 18	394 ⁵	0° 29' 15' R		N 80° E	N 69° E
(16) 17	357°	54° 19' 27 9' ↓		N 69° 45' E	N 71 1/4° E
(5) 16	68°	90 6 45 3' R		S 83° 6' E	S 84 3/4° E
15	173 ⁶	5 17 2 38 R		N 51° 51' E	N 50° E
14	237 ²	145 8 72° 34' R		N 49 13' E	N 47° E
13	126 ⁶			N 23° 21' W	N 27° W
12		4 36 2° 18' L		N 21° 3' W	
11					

90
583° 6'E
 6 524

27 9
 2 18

 29 27

100 6
 15
 45 3
 2 38
 72 34

 220 36
 29 27

 191 9
 20 3

 171 6
 17 0 6

 9 54

51 51
 45 3

 96 54
 83 6
 57 9

 139 40
 118 15

 69 25
 69 15

 70 0
 100 6

 174 60
 176 6

 4 54

179 60
 95 54

 84 6
 27 9

 179 60
 111 15

 68 45
 11

 69 00
 100 6

 179 60
 169 6

 10 54

2 18
 27 9

 29 27

72° 34'
 2 38
 45 3
 100 15

 100 6
 20 36
 29 27

 191 9
 21 3

 176 6
 17 0 6

 9 54

77^a ft West. Hub 17
 South. 1796.

17346
~~12884~~
 3952

250 - 20° 25' 88598 ✓
~~650~~
~~4429900~~
 177196
~~22149500~~
 675

106⁵ - 129° 40' 80892
~~1065~~
 432460
 521352
 868920
 92539980

~~8965~~
~~925~~
 9880
~~295~~
 12834
~~56~~
 13394
 2963

300¹⁰ 5' 98455
~~3~~
 295365 ✓

16357
~~989~~
 17346
 78

300 9' 98769
~~3~~
 296307 ✓

~~18128~~

18-BO
S 50W 22ft
RPCS BTA

782
1734.6

1812.8

1777.8
1025

1027

1177.8

1136.6

41.2

1815 E 135 94970

135
47495
28491
9497

1482095
94

22722

-10°35' 143 96778

8 43
290334
387112
96778

13839254

-9°20' 222 98676

-11°25' 135° 98021

13.5

-1930 1183

490105
294083
98021

13432825

26
63
215
10

920

314.2
138.4
104.5
116.5

673.6
132.3
219.2

1025.1
111.5

1136.6

942641

1185
282792
754112
1036904

174514312

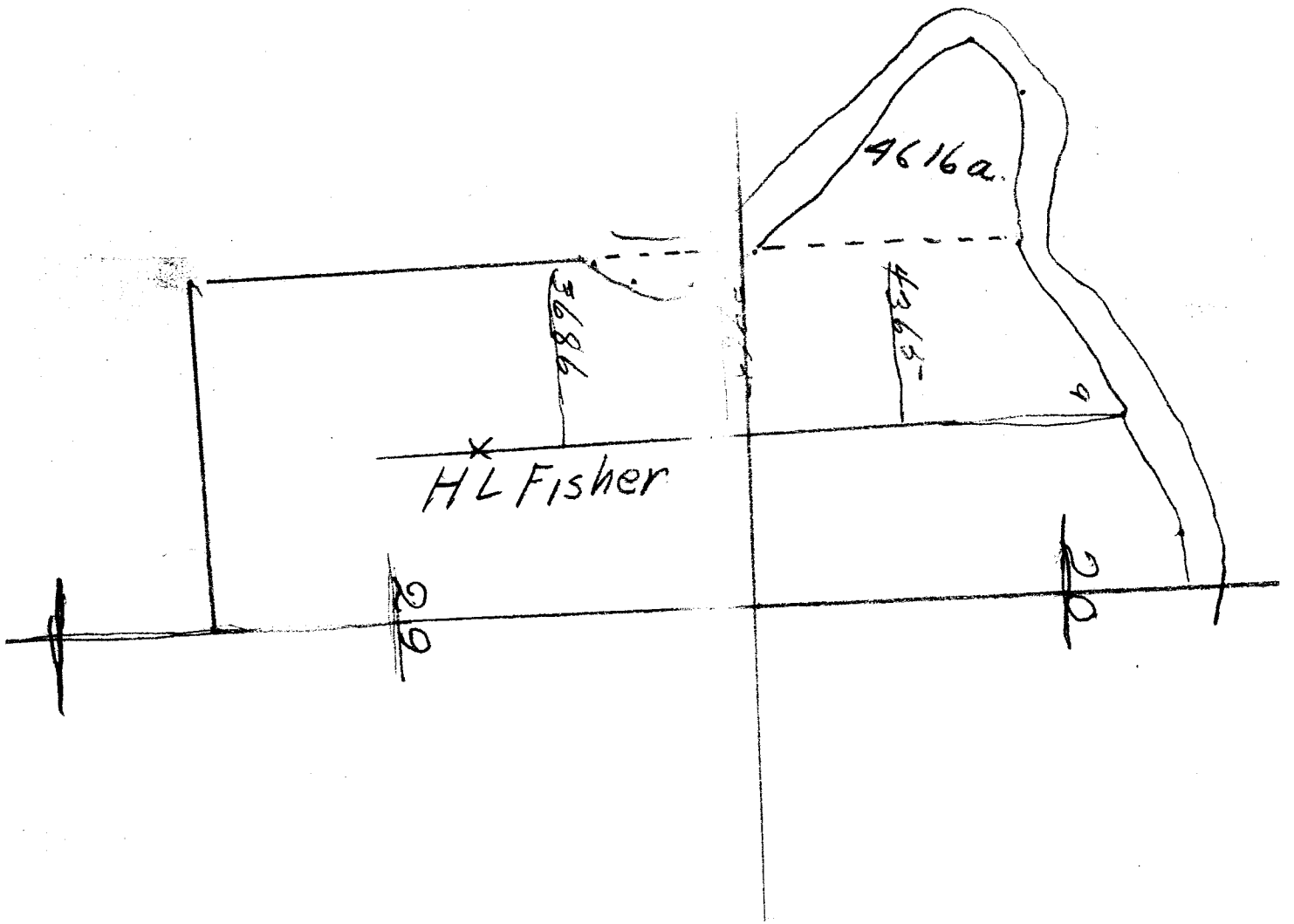
98676
2221
98676
197352
197352
197352

219159396

1282
94.
92.
138.4
104.5
116.5
132.3
219.2
111

1136.6

50/41



HL Fisher

CS FILE FOLDER

CONTAINS

MORE

INFORMATION