

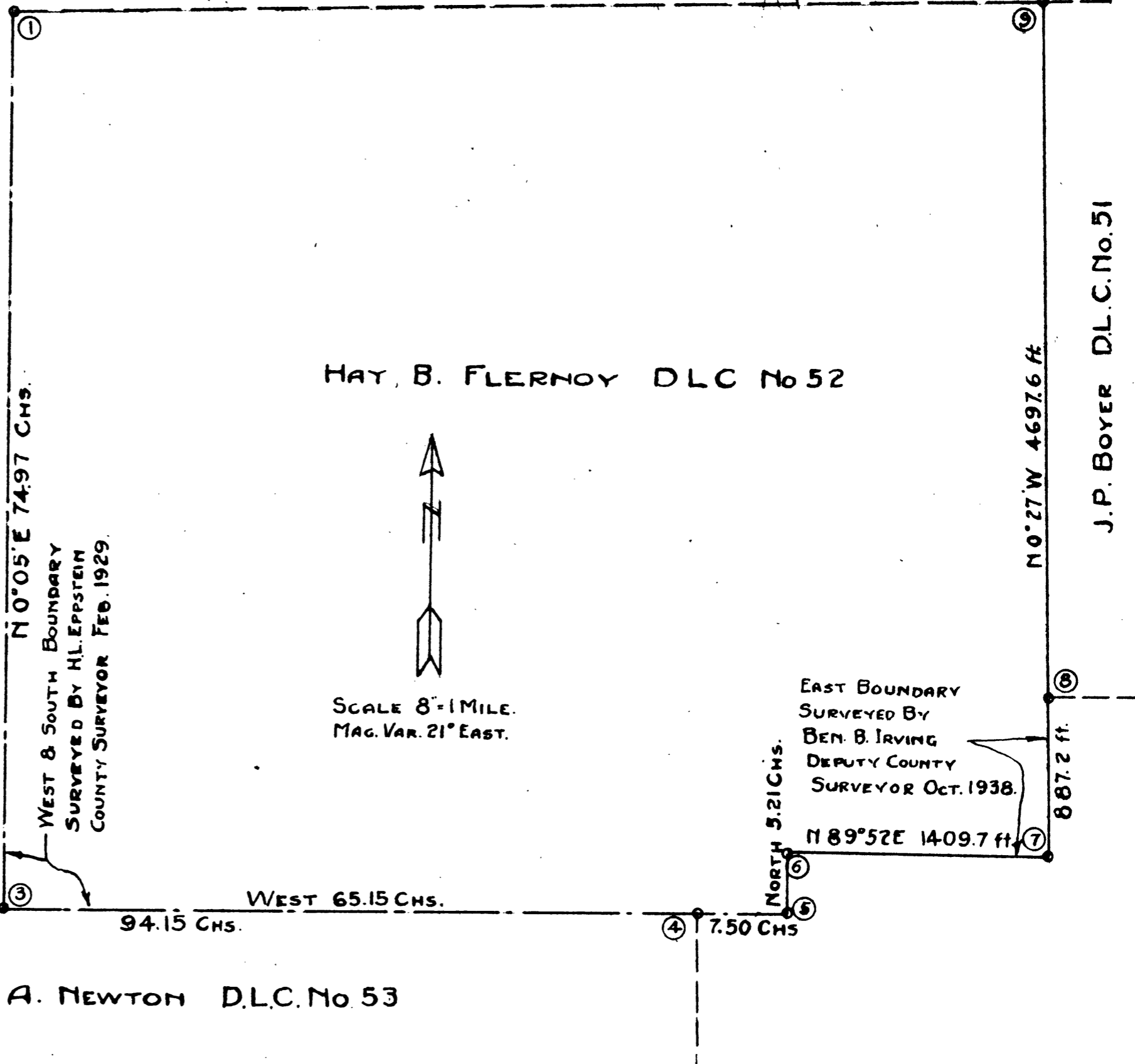
SURVEYS OF THE  
**MAY B. FLERNOY**  
 D.L.C. No 52, T. 27S, R. 7W, WM.

DOUGLAS COUNTY  
 OREGON.

BEN. B. IRVING, DEPUTY COUNTY  
 SURVEYOR.  
 ROSEBURG OREGON

JONES FLERNOY  
 DLC No 50

CORNERS.		
No	DESCRIPTION	BEARING TREES.
1	6" x 11" x 30" SANDSTONE.	16" FIR S50°E 177 lks.
2	3" x 3" x 48" POST.	10" FIR S43°E 23 lks.
3	2" x 18" IRON PIPE.	12" FIR N8°E 23 lks.
4	3/4" x 36" IRON PIPE.	12" OAK S58°W 17 lks.
5	4" x 4" x 36" POST.	14" FIR N55°W 48 lks
6	4" x 4" x 24" POST - 3/4" PIPE	10" FIR S80°E 46 lks
7	3/4" x 40" PIPE IN ROCK MOUND	{ BOULDER 30" x 48" x 4" 565°W 5 ft. mkd. x BO.
8	3" x 3" x 24" SANDSTONE	14" FIR N28°E 16.6 ft.
9	6" x 14" SANDSTONE 4' above gd.	12" ASH NORTH 0.7 ft.



F Boundary DLG 52  
H B FLECKNOY.

Fo N. Conn.  
Oct 1938

Writing Dep. G. S. S. S.  
Richardson Chair

Hub	Feet	L	CL	ML	Slope
5			✓		
4	259.2	128.48, 64°24' L	N 23°03' E	N 23 1/4 E	
			N 89°27' E		
Temp Section			✓		
1410.9	66.9	3°32' L	N 83°55' E		
1347.0	306.8		N 87°27' E	N 87 3/4 E	
1037.2		4°07, 2°04' L			
2	345.1'	0°08 0°04 R	N 89°31' E	N 89°30' E + 4°00' 464	300°
1	180.9'	6°07, 3°03' L	N 89°27' E	N 89°30' E + 6°15' 182°	
	510.6		589°30' E	587°30' E + 79°03' 214.8	45°43' 300
1st L Cor	152			Var 21° E	

133

Oct. 15 1938

786  
796  
878

Irving T  
Richardson HK  
Joe Matthews AXC  
Geo AXC  
N. Conn.

Int LCo. 50 Pcty C652 New BT.  
30" FN 52" W 61" H D L C S 2 C S BT  
3/4" x 1/8" pipe along side Post

94756 ~~299,268~~  
467  
3457

99406

99406  
182

198812  
795248  
99406

98955 212,125  
99503 299,509  

---

510.6

100,91892  
98755  
2148

700 040  
3750 20  
98755  
197510  

---

212125940

22/39

Hub	Feet	L	CC	MC	Slope
11 2276 <sup>5</sup>	477 <sup>9</sup> ✓		✓ NO 41° E	MC N 1° E	5/400 +5° 48' 180° -5° 30' 300°
10 198 <sup>5</sup>	227 <sup>3</sup> ✓	17.57 8° 53' L	N 9° 37' E	N 10° E	+4° 15' 227 <sup>8</sup>
9 11 <sup>4</sup>	511 <sup>5</sup> ✓	17.18 8° 39' R	NO 58° E	N 1° E	-3° 20' 212 <sup>8</sup> -4° 32' 300°
8	632 <sup>4</sup> ✓ 630 <sup>7</sup>	25.57 12° 59' R			
7	216.8 ✓	10.20 5° 10' L	N 12° 01' W	N 11° W	-9° 32' 333 <sup>3</sup> 300°
6		7.39 3° 49' L	N 6° 51' W	N 6° 22' W	-5° 10' 217 <sup>7</sup>
5	212 <sup>4</sup> ✓	52.10 26° 05' L	N 3° 02' W	N 2° 34' W	+5° 40' 213 <sup>4</sup>
			N 23° 03' E		

99488 ✓

99482 ✓

6

99725 ✓

2278

797800

698075

109450

199450

227.1

99831 ✓

212.44

99687 ✓

299.061

511.5

99619

99187

297481

353.3

650.7

99594

99511 ✓

7

213

398044

298533

99511

199022

212.356494

99488

1804

397952

795904

44488

179476352

298446

277.922

99831

2128

798628

1197972

149662

212.440368

99594

2177

697158

697158

99594

199188

216.816138

022/39

18	4675		✓		
17	2557	17°29' 8 1/4 R	R	N1°08'W	N0°40'E
16	4147	23 1/6 11°38' L		N9°52'W	N9°2'W
15	3340	4 2/20 2°10' R		N1°46'E	N2°45'
14	2659	5 1/6 2°35' R		N0°24'W	N
13	3734	17 2/20 6°14' L		N3°02'W	N3°W
12	992	46 4/20 30°51' L		N3°12'E	N3°2'E
11	27765	66 4/5 33 2/22 R		N34°08'E	N34 1/2'E
				N0°41'E	

3015!

2749!

L { 300°  
34°

L 743  
-4°30' 300°



Fence Cor

380<sup>5</sup>

✓

E

Stone

31<sup>2</sup>

N 52° 17' E

18

53° 25' R

N 1° 08' W

Cor. SE DLC 52

Drove  $3/4 \times 140$  GLP 30" in ground  
mound of rock 24"  $\phi$   $\times$  12" high

X Christ on Boulder 30"  $\times$  48"  $\times$  14"  
high mtd B.O. bears  $565^\circ$  W  
5 ft.

Location identified from hole  
where DBT had burned out.  
no other would fit for bearing  
& Dist from hole to Cor

NE Cor CL 52

22/89

SW Cor C151

3x3x24 Sandstone

51 ON NE FALL

14" Fir N 28° E - 16.6 ft.

SW C51 CS BT.

---

NE Cor CL52 } Sandstone 6" x 14" x 4"  
NW Cor CL51 } above ground

12" Ash N - 7 ft.

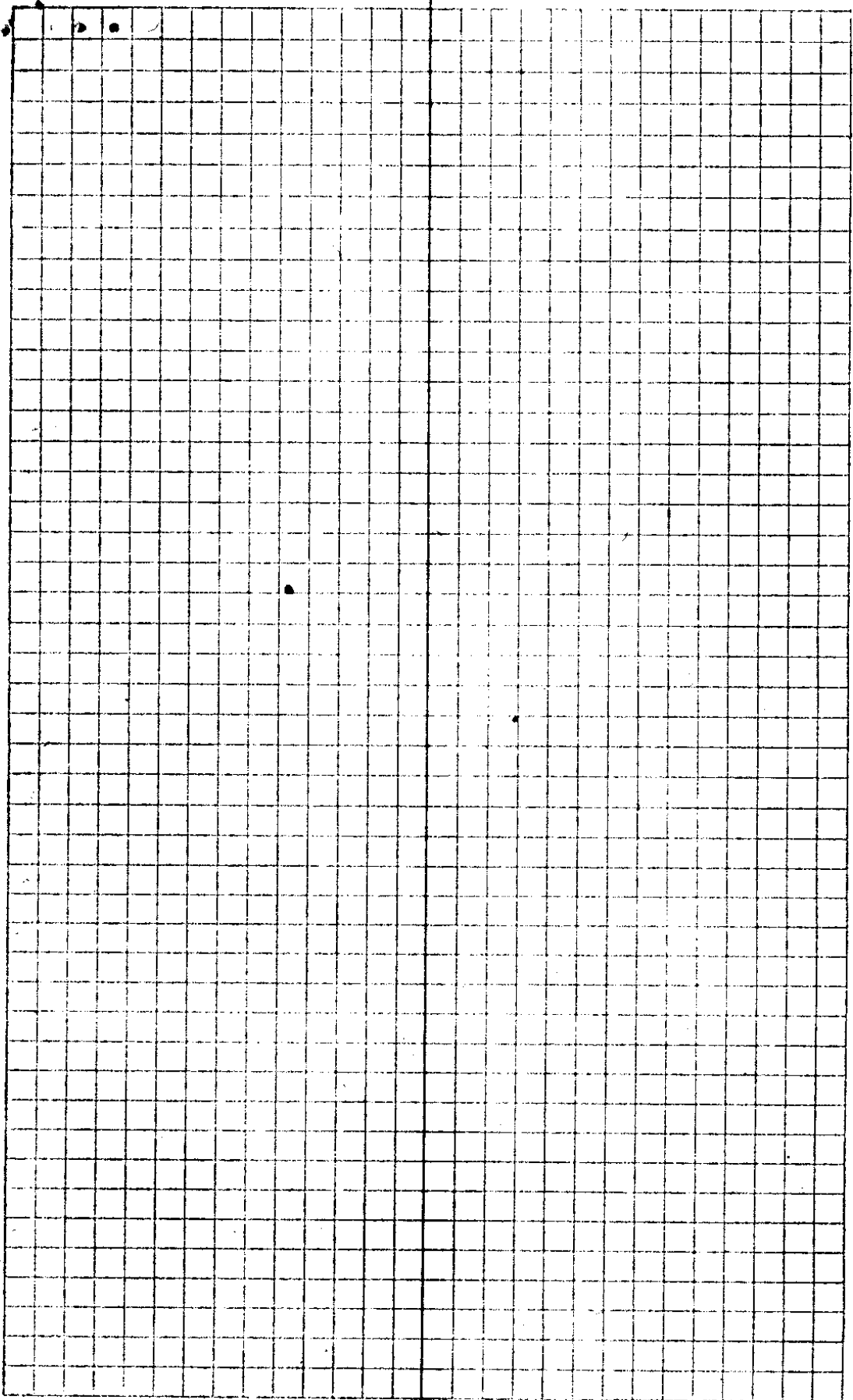
DLC52 - DLC51 CS - BT

---

NE Cor DLC # 53.

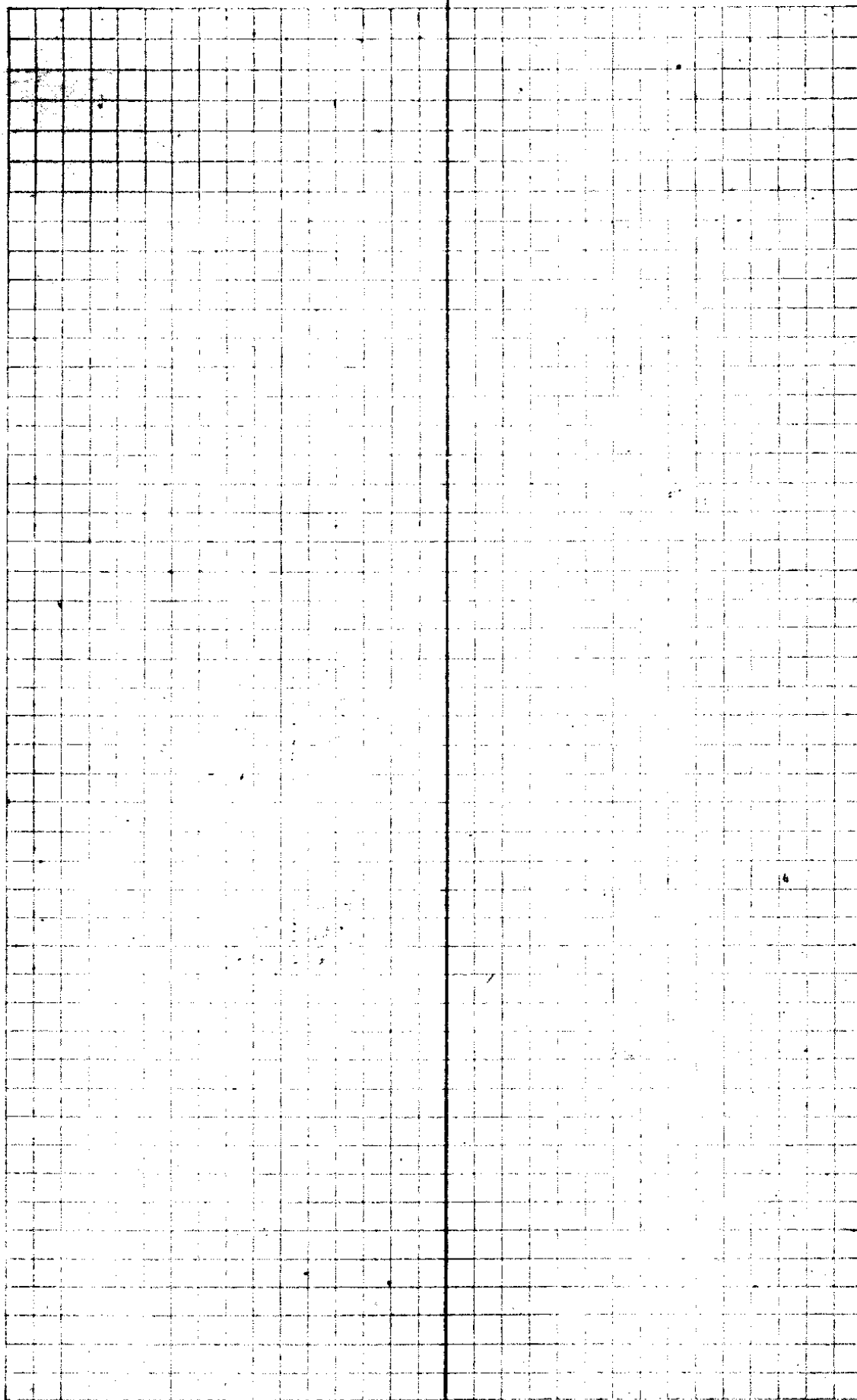
3/4" x 3/4" Iron Pipe with

Post alongside -

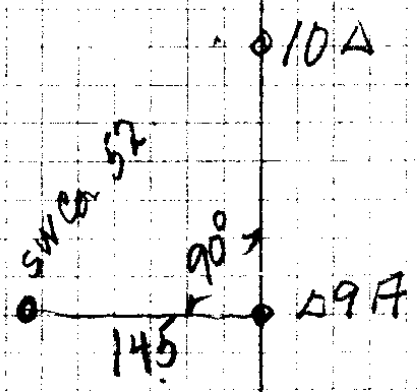


22/39





1				
$\Delta 12$				
5 454	452.3		38678	
$\Delta 11$				
5-30 449	446.9		3415E	
$\Delta 10$				
10 212	208.8		2968.6	
$\Delta 9$				
8 3345	331.2			
$\Delta 8$				
7-30 302	299.4			
$\Delta 7$				
5-30 290	288.7			
$\Delta 6$				
6-15 279	277.3			
$\Delta 5$				
1-30 260	260.4			
$\Delta 4$				
8° 262	259.4			
$\Delta 3$				
20 177	166.3			
$\Delta 2$				
12-30 175	171.3			
$\Delta 1$				
6-30 10	209			
	496			
N.W. Co				
2653				
				East



SW corner CL 52  
 2" x 18" G.I.P.  
 marked  
 CS CL 52 BT.  
 12" Fir NEE  
 23 links

NW corner 53  
 set a 3" x 3" x 4' found  
 stake from old Oak  
 BT. marked a  
 10" Fir for NW BT.  
 543 E 23 links  
 N & Richardson  
 NW corner  
 Ed Jones  
 Wallace De Priest

22/39

3

Δ 24

89614

130 392

3919

90 R.

Δ 23

10LK

90L

Δ 22  
Cor

85695

1123

Δ 21

84573

268

112.2 M wt of 1920 53

Δ 20

81893

305

90 East

Δ 19

10LK

90 L

Δ 18

78843

14.8 M East of Machine

148

Δ 17

292

77363

Δ 16

105  
500

500 605

77074

90 R

East

Δ 15

17LK

90 L

Δ 14

2757.5

71024

Δ 13

330

478

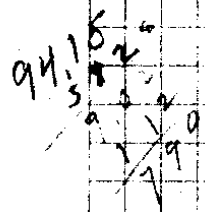
477.1

43449

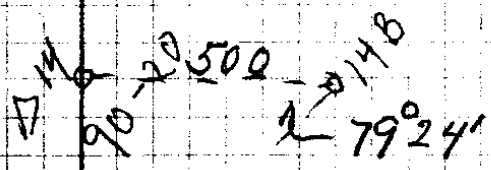
N 17 M

Δ 12

44th North - 37 - 7th North



NE Cor C. 1. 53  
 lot cor on line regard  
 distance from NW cor  
 Mark CS Vol 53 TB  
 12' W Oak 55' 8" W 17' 4" H 5'



9415  
 10 3/4  
 13

5

90R

1 3

5 203

202.4

Δ 2

10-30 175

172.9

} 5204 ahead 6 hr.

Δ 1

5° 145.5

145.9

South

Chnt Lcn

Δ 28

46.3

Δ 27

12° 222

217.2

93687

onvr 27 ahead  
46.3 links

Δ 26

6-30 191.5

190.3

90W

91515

Δ 25

37

90R

5

24

11.5

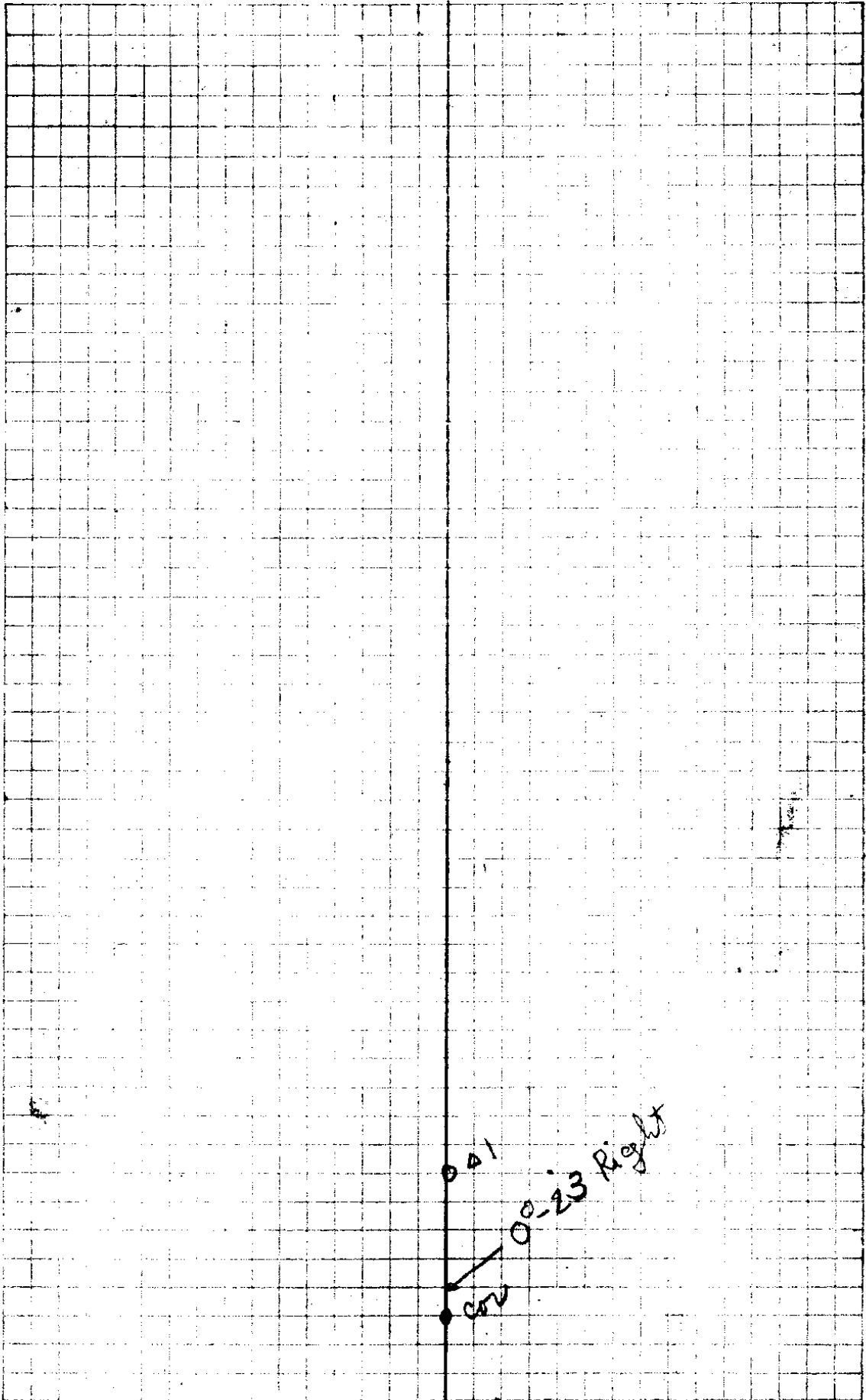


7

$\Delta 12$		2254		113
4 415	414			
$\Delta 11$		1840 <sup>2</sup>		9.2 ●
5-30 170	169.2			
$\Delta 10$		1670 <sup>8</sup>		84
11° 380	373 <sup>2</sup>			
$\Delta 9$		1297 <sup>8</sup>		6.5 W
	385	90		
$\Delta 8$				
	.20		90°-00	
$\Delta 7$				
	297	912.4	90°-00	154 <sup>2</sup> ●
$\Delta 6$				
	20	90°-00'		
$\Delta 5$		615 <sup>8</sup>		3.1 W
10 342	242	5°-00'		
$\Delta 4$		373 <sup>8</sup>		1.9 W
	50		10°-00'	
$\Delta 3$		324 <sup>2</sup>		1.6 W
	50 49 <sup>8</sup>	5°-00'		
$\Delta 2$		274 <sup>2</sup>		1.4 W ●
	203 <sup>2</sup>			
$\Delta 1$		71		40
sw cov	71			

NI-01'E

22



A9

00-23 Right

00-21

22/29

9

024

51274<sup>4</sup>

25.5

8 429

424<sup>8</sup>

Δ 23

4702<sup>6</sup>

29.5

5-13

132.3

6-22

45703

22.9

8-174

363<sup>8</sup>

Δ 21

4206<sup>5</sup>

21.0

1-23

236<sup>6</sup>

Δ 20

3762<sup>9</sup>

19.8

3 496

475<sup>3</sup>

Δ 19

3474<sup>6</sup>

17.3

2-13 166

166<sup>6</sup>

Δ 18

3308<sup>0</sup>

16.5

73<sup>8</sup>

Δ 17

3234<sup>2</sup>

16.2

7 173

171.7

5.00

Δ 16

3062<sup>5</sup>

15.3

100996

50<sup>0</sup>

Δ 15

2962<sup>9</sup>

14.8

1.00 996

5.00

Δ 14

6-30 371<sup>5</sup>

369.1

2863<sup>3</sup>

14.3

Δ 13

6-30 241<sup>9</sup>

240<sup>2</sup>

2494<sup>2</sup>

12.5

Δ 12

Feb 28 1929

10

Time 10 38 <sup>15 min</sup>  
 Hor 31° 4' <sup>off</sup>  
 Vir 34° 21' <sup>table</sup>  
 Mag S 31° E

Time 10 39  
 Vir 33° 54'  
 Hor 31° 27'

245.5

22/39

11

cov

299

87-08

N88-07W

Δ30

106

7476? 90 R

N1-01E

Δ41

10

90°L

S88-88S

Δ28

7390.2

W 37L

Δ30

2054  
4996

W 33 1/2

Δ27

6684.2

Δ35

4369

W 31 L

Δ26

6247.3

Δ30

99  
4997  
598.7

28.2

Δ32

5648.6

Δ30

2155  
4997  
52

Δ34

Set NW Corner  
of pl 52 found  
BOT 6" x 1" x 30"  
Sandstone  
Pipe 1" x 7"

16" Fin S 50° E 1771Ks

Total count 7496 Kill 39 to Right



CS FILE FOLDER

CONTAINS

MORE

INFORMATION