

LOTS 3 & 4 T. 29 S., R. 8 W., W.M.  
 SHOWING  
 CERTAIN DEED DESCRIPTIONS.

BET. B. IRVING, DEPUTY COUNTY SURVEYOR.  
 NOV. 6 1930  
 SCALE 1" = 2 CHAINS.

C P Beeson  
Camas Valley.

Lot 4 Sec 31 T29 S R 8 W

Ben B Irving  
Nov 7 1930

22-28

124.85  
 11.21 | 13.66  
 11.21  
 ---  
 2450  
 2242  
 ---  
 208  
 1121  
 ---  
 9590  
 8968  
 ---  
 6220

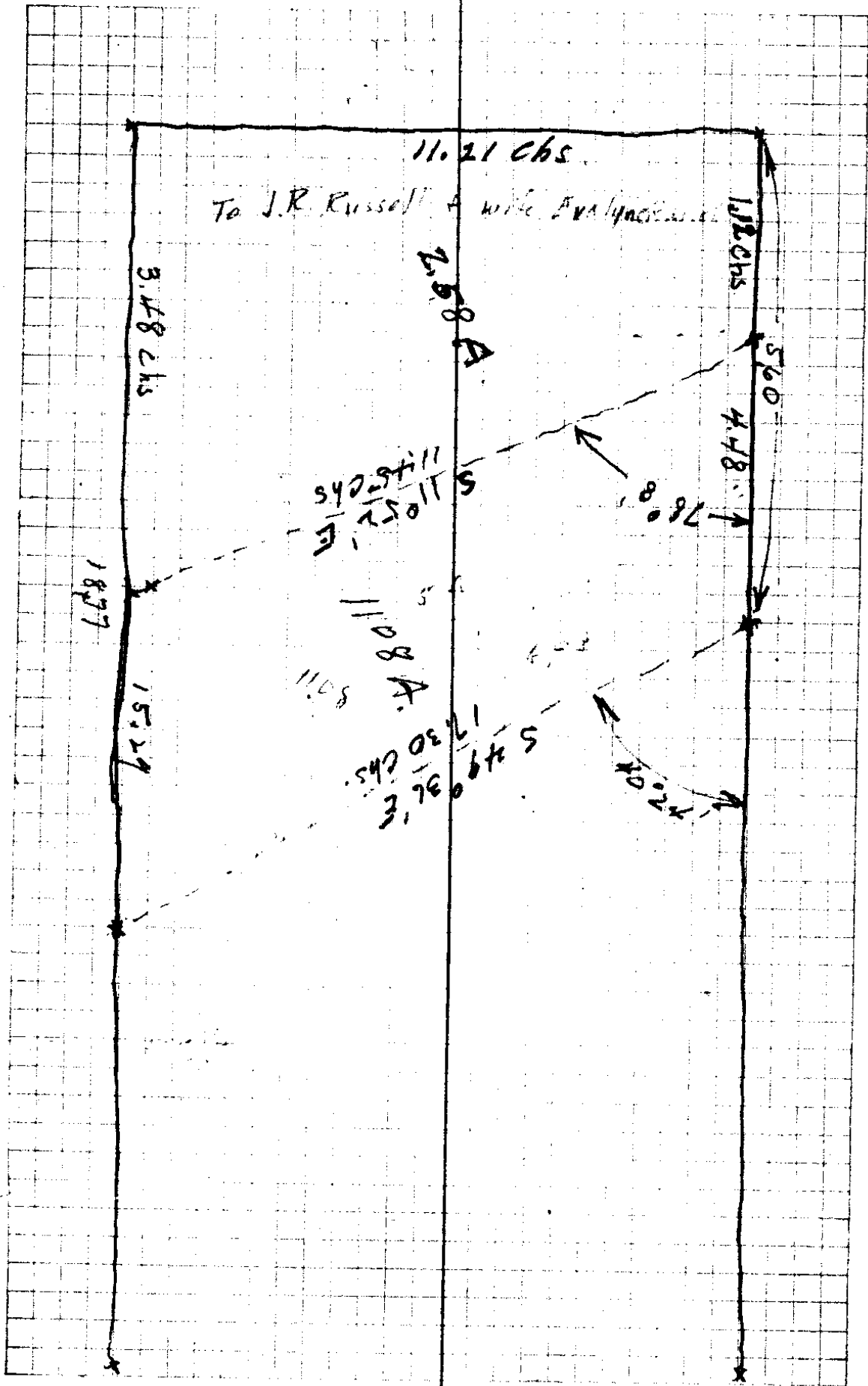
12.185  
 24.370  
 5.60  
 ---  
 18.77 =  
 3.48  
 ---  
 15.29  
 4.48  
 ---  
 119.77  
 9.885  
 2121  
 ---  
 9885  
 19770  
 108635  
 ---  
 11071085  
 2.58  
 ---  
 13.65

124.85  
 11.21 | 11.21  
 11.21  
 ---  
 191960  
 191960  
 ---  
 368  
 308  
 ---  
 6052

~~64812~~  
~~76154~~  
~~64812~~  
 11.21 | 1730  
 11.21  
 ---  
 1730

549034E

5430  
 7847  
 ---  
 8390  
 1121  
 ---  
 1960  
 1121 | 1111  
 1121  
 ---  
 11317  
 560  
 ---  
 11817



22/25

1500

520

2000

C.R. Beeson

T 29 ~~13~~ 5 & 8 + 9W

Sec. 36 + 31

DLC. 44

March 20 1928

BB Irving T

RL " Chain

CR. Beeson Acc

See. Cor. 9<sup>s</sup> Cole.  
Set by Cole.  
$$\begin{array}{r} 2530 \\ 36 \overline{) 900} \\ \underline{72} \\ 180 \\ \underline{180} \\ 0 \end{array}$$

T 295 R 9 W

SW cor. 81

South

Section D.L.C. 44

SE cor

chopped  
set stakes along this line

D.L.C.  
as set  
by Cole.

N 2 - 20

20/28

5 E Gr Day QLC - 4-13  
Controlled by QPT dead  
dry rocks plainly visible  
Base RT 12" Fir 52°W 96<sup>6</sup>  
Iron pipe set by coll.

22/28

80.48

405

7643  
6

75

75

45855  
45858

507438  
450

67258

544  
520

51'R

193

150

438

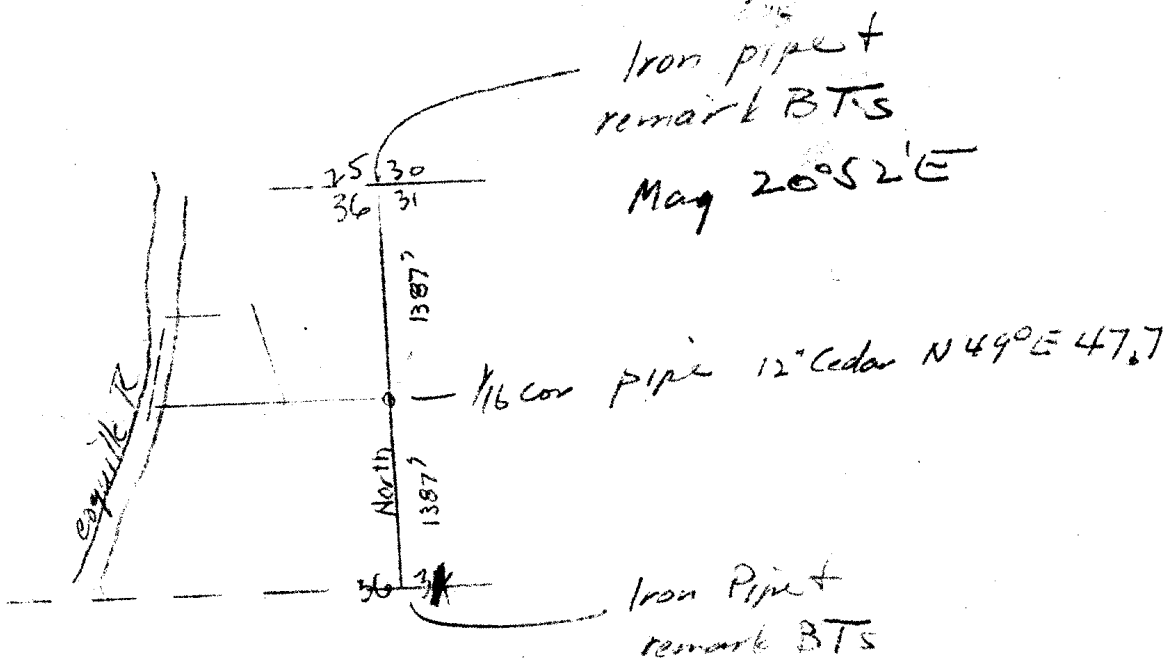
315

630

495

135

20/25



FILE 22 DRAWER 22

CS FILE FOLDER

CONTAINS

MORE

INFORMATION