

NE Cor. D.L.C. 47  
T 30 S; R 6 W.



TIE, S 45° 42' W 4681.7 ft.

73° 18'

9° 42'

UNION OIL CO. PLANT  
RIDDLE, ORE

JUNE, 1936.

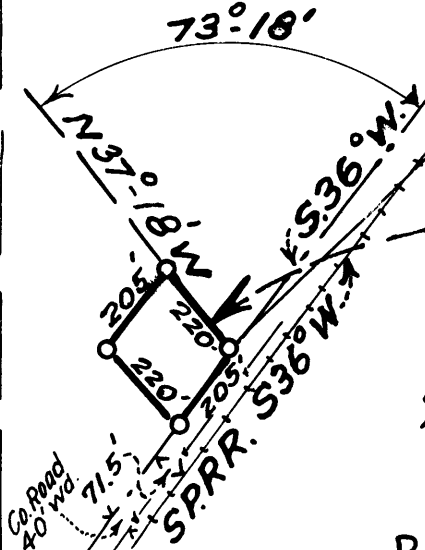
SCALE, 1" = 400 ft.

PREPARED FROM DATA FURNISHED BY H.L. EPPSTEIN,  
COUNTY SURVEYOR FROM 1929 SURVEY & FROM DATA  
FURNISHED BY FRANK CAIN, SURVEYOR, OF RIDDLE, ORE.

A. Boyer, Dep Co. Surv'r.

D.L.C. 47

RIDDLE CITY LIMITS



CS FILE FOLDER

CONTAINS

MORE

INFORMATION