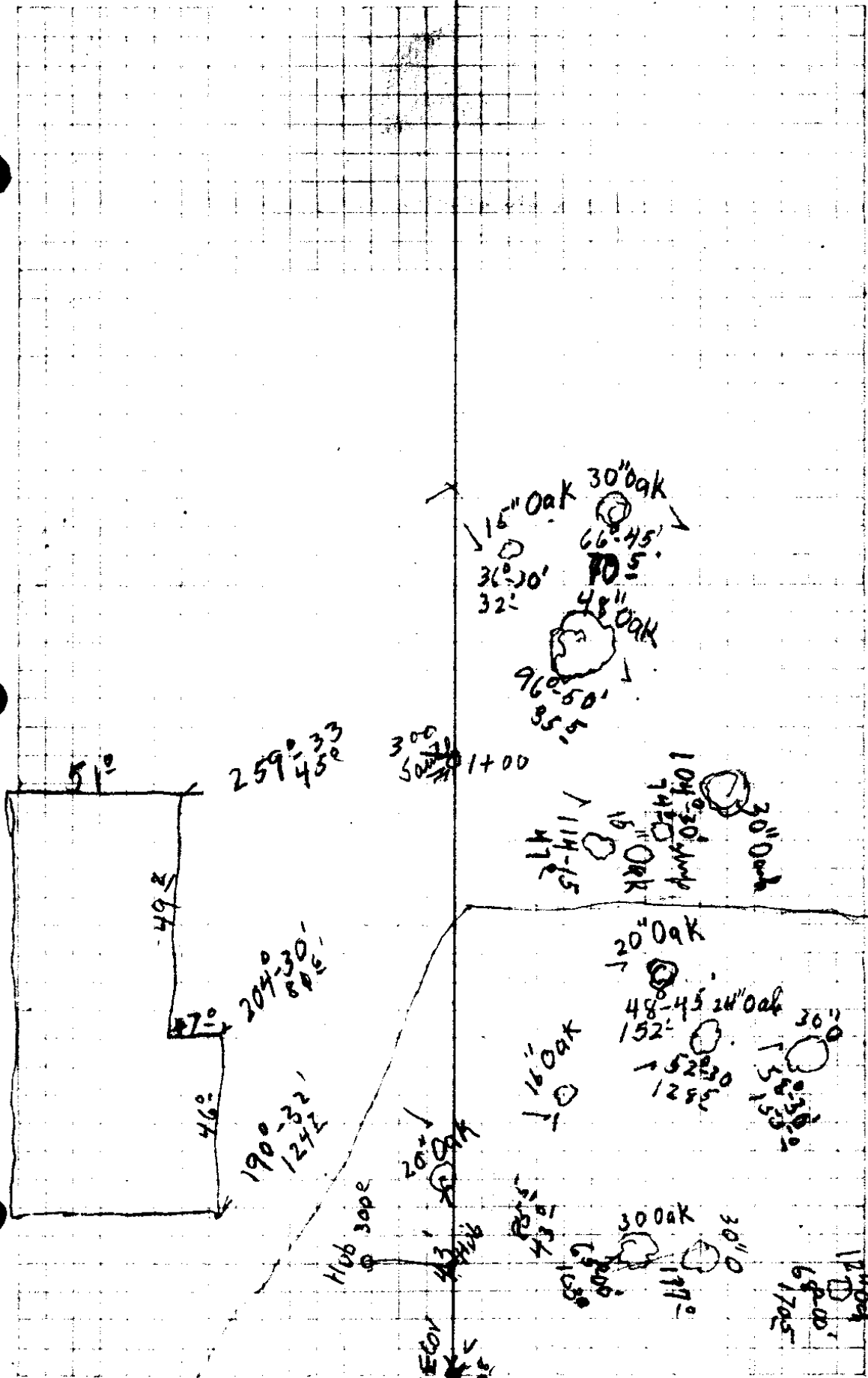


Myrtle Creek School

Baseball Grounds.

22-18

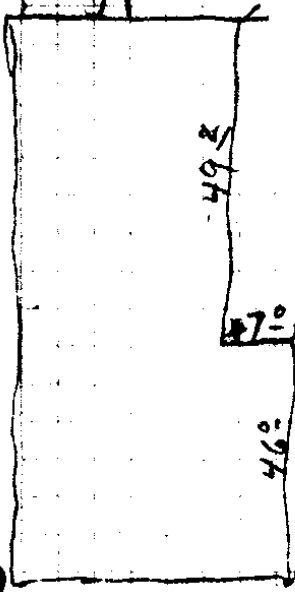


259°33'
45'

300
500
1400

15" Oak 30" Oak
66.45'
30°30'
32'
48" Oak
96.50'
85.5'

104°30' Oak
74° Oak
15" Oak
114-15
114-15
30" Oak



204°30'
80°

190°32'
124.1

Hub 30pe

20" Oak
48-45 24" Oak
152°
152°30'
125°
16" Oak
30"

20" Oak
43
43

30" Oak
179°
124
67.00
17.05
30"

5160V
290°

2/22/14

Sta. π π - R Elev
 7.77 107.77 100.00

3005
 25W
 29085
 22W

9.6
 9.3
 98.2
 98.5

0+00 $\frac{97.32}{1045}$ $\frac{97.2}{106}$ $\frac{98.5}{7.3}$ $\frac{98.2}{9.4}$ $\frac{99.4}{8.4}$ $\frac{101.4}{6.4}$ $\frac{103.4}{3.9}$
 $\frac{296.8}{275}$ $\frac{2150}{225}$ $\frac{200}{175}$ $\frac{130}{150}$

T.P. 13.92
 0+00 $\frac{11.8}{110}$ $\frac{8.9}{75}$ $\frac{6.5}{50}$ $\frac{3.6}{25}$ $\frac{106.79}{0.6}$
 105.9 111.8 114.2 117.1 120.8

0+50 $\frac{120.33}{0.38}$ $\frac{117.0}{8.7}$ $\frac{114.8}{5.9}$ $\frac{112.7}{8.0}$ $\frac{109.8}{10.9}$ $\frac{107.2}{13.5}$
 $\frac{00}{25}$ $\frac{50}{50}$ $\frac{75}{75}$ $\frac{100}{100}$ $\frac{125}{125}$

T.P. 8.96 114.03 15.64 105.07

0+50 $\frac{102.9}{11.1}$ $\frac{101.7}{12.3}$ $\frac{101.2}{12.8}$ $\frac{101.7}{12.3}$ $\frac{99.6}{14.4}$ $\frac{99.1}{14.2}$
 $\frac{175}{200}$ $\frac{225}{250}$ $\frac{275}{300}$

0+77.7 $\frac{99.5}{14.5}$ $\frac{100.7}{13.3}$ $\frac{102.4}{11.6}$ $\frac{102.9}{11.1}$ $\frac{103.1}{10.2}$ $\frac{103.5}{10.5}$
 $\frac{300}{275}$ $\frac{250}{225}$ $\frac{200}{175}$

T.P. 6.86 120.57 0.32 113.71

0+77.7 $\frac{114.2}{6.4}$ $\frac{117.0}{3.6}$ $\frac{120.54}{0.03}$
 $\frac{50}{00}$ $\frac{25}{25}$

1+00 $\frac{120.12}{0.45}$ $\frac{115.1}{4.7}$ $\frac{12.7}{7.9}$ $\frac{111.2}{9.4}$ $\frac{108.4}{12.2}$ $\frac{107.5}{13.1}$ $\frac{105.3}{15.3}$
 $\frac{0.0}{25}$ $\frac{4.5}{25}$ $\frac{50}{50}$ $\frac{7.5}{7.5}$ $\frac{100}{100}$ $\frac{109}{109}$ $\frac{111.0}{111.0}$

T.P. 11.82 15.57 105.00

116.82

B.M. Top of N.E. Corner of lower Step of Back
Steps to School House,

$$\begin{array}{r} 106.2 \\ 1.6 \\ \hline 125 \end{array}$$

$$\begin{array}{r} 104.9 \\ 13.8 \\ \hline 150 \end{array}$$

$$\begin{array}{r} 104.8 \\ 9.2 \\ \hline 150 \end{array}$$

$$\begin{array}{r} 105.8 \\ 8.2 \\ \hline 125 \end{array}$$

$$\begin{array}{r} 106.5 \\ 7.5 \\ \hline 118 \end{array}$$

$$\begin{array}{r} 107.9 \\ 6.1 \\ \hline 116 \end{array}$$

$$\begin{array}{r} 109.5 \\ 4.5 \\ \hline 100 \end{array}$$

$$\begin{array}{r} 112.1 \\ 1.9 \\ \hline 75 \end{array}$$

$$\begin{array}{r} 105.0 \\ 15.6 \\ \hline 125 \end{array}$$

$$\begin{array}{r} 104.6 \\ 16.0 \\ \hline 150 \end{array}$$

116.82

	143.4	103.3	103.2	102.6	104.2	99.3
1+00	$\frac{13.4}{175}$	$\frac{13.5}{2+00}$	$\frac{13.6}{225}$	$\frac{14.2}{250}$	$\frac{16.1}{275}$	$\frac{17.5}{300}$

	98.9	99.8	100.6	104.0	104.7	102.2
1+50	$\frac{17.9}{300}$	$\frac{17.0}{275}$	$\frac{16.2}{250}$	$\frac{15.8}{225}$	$\frac{15.1}{200}$	$\frac{14.6}{175}$

	118.80	110.4	108.6	107.0	105.9	104.8	102.5	100.2
2+00	$\frac{30.2}{0.0}$	$\frac{6.4}{25}$	$\frac{8.2}{50}$	$\frac{9.8}{75}$	$\frac{10.7}{100}$	$\frac{12.5}{125}$	$\frac{14.3}{150}$	$\frac{16.6}{175}$

T.P. 11.00

	111.47	16.35	100.47
2+00	$\frac{98.1}{13.4}$	$\frac{96.7}{14.8}$	$\frac{95.5}{16.0}$
	$\frac{95.2}{16.3}$	$\frac{95.06}{16.41}$	$\frac{93.5}{18.0}$
	$\frac{92.0}{19.5}$		

	89.5	89.8	90.9	92.0	93.0	94.4	95.8
2+50	$\frac{22.0}{350}$	$\frac{2.17}{3.25}$	$\frac{20.6^B}{300}$	$\frac{19.5^B}{2.75}$	$\frac{18.2^B}{250}$	$\frac{17.1}{225}$	$\frac{15.7}{200}$

	107.33	104.4	104.6	100.4	98.7	97.0	95.4
3+00	$\frac{4.14}{00}$	$\frac{6.6}{25}$	$\frac{8.9}{50}$	$\frac{11.4}{75}$	$\frac{12.8}{100}$	$\frac{14.5}{125}$	$\frac{16.1}{150}$

T.P. 10.81

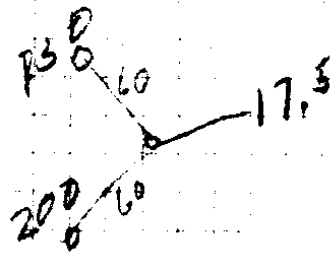
	106.13	16.15	95.32
--	--------	-------	-------

	93.5	91.5	90.4	89.3	88.4	87.5	86.1
3+00	$\frac{12.6}{175}$	$\frac{4.3}{200}$	$\frac{15.7}{225}$	$\frac{16.4}{250}$	$\frac{17.7}{275}$	$\frac{18.6^B}{300}$	$\frac{20.0}{325}$
							$\frac{20.1}{335}$

85.4

102.5	104.0	104.1	104.2	104.5	106.0	106.8	116.67
<u>14.3</u>	<u>12.8</u>	<u>12.7</u>	<u>12.6</u>	<u>12.3</u>	<u>10.8</u>	<u>10.0</u>	<u>0.15</u>
170	163	150	125	113	112.5	100	0.0

\swarrow \swarrow \swarrow
 108.7 110.5 112.8



97.4	98.8	100.6	102.4	104.0	106.0	108.2	111.10
<u>14.1</u>	<u>12.7</u>	<u>10.9</u>	<u>9.1</u>	<u>7.5</u>	<u>5.5</u>	<u>3.8</u>	<u>0.37</u>
175	150	125	100	75	50	25	0.0

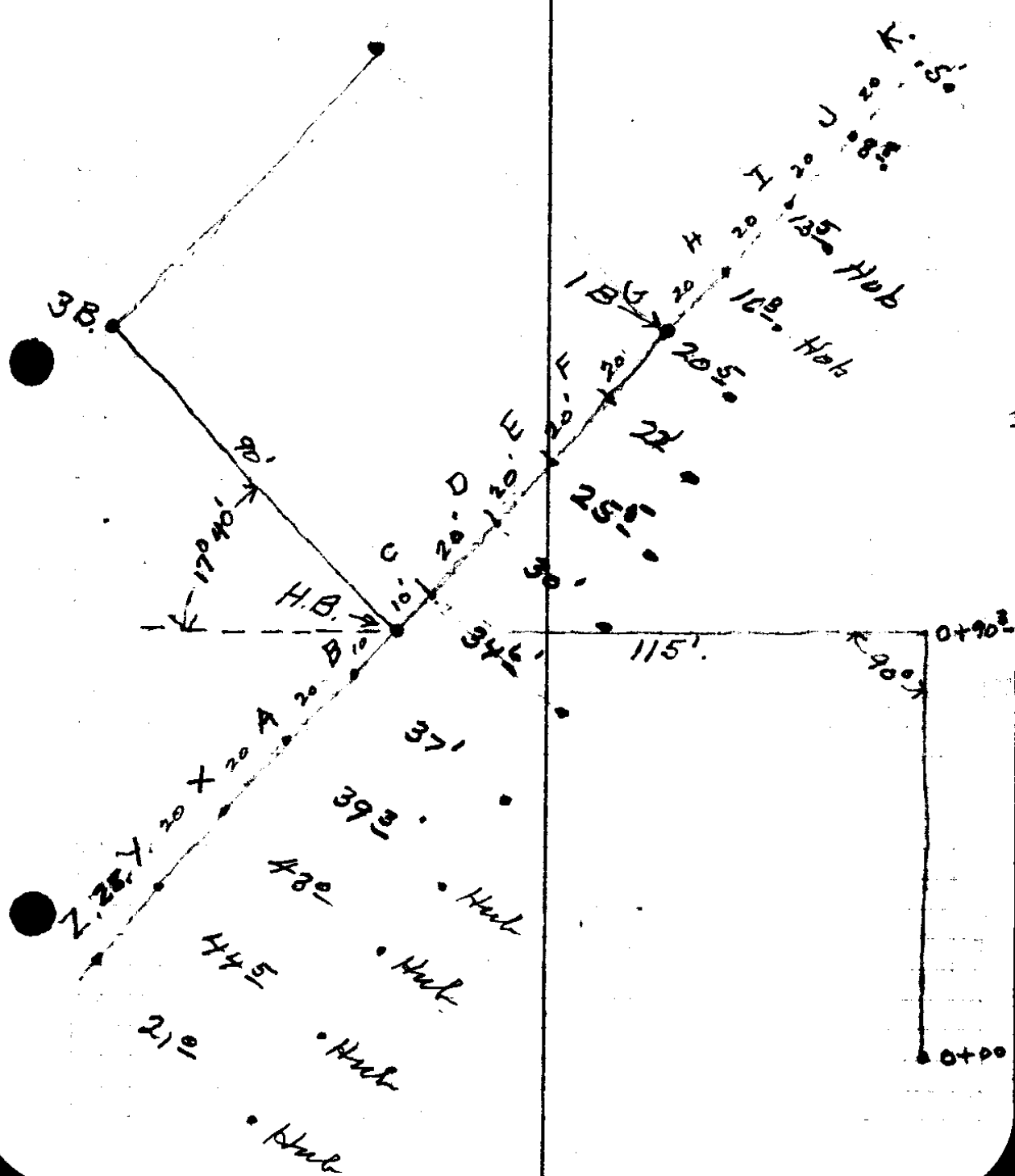
106.13

	82.1	83.1	84.6	85.6	86.7	87.8
3+50	$\frac{24.07}{530}$	$\frac{23.0?}{325}$	$\frac{21.5?}{300}$	$\frac{20.5}{275}$	$\frac{19.4}{250}$	$\frac{18.3}{225}$

	102.72	100.4	98.9	97.2	95.4	92.5	91.8
3+75.4	$\frac{3.41}{0.0}$	$\frac{5.7}{25}$	$\frac{7.2}{50}$	$\frac{8.9}{75}$	$\frac{10.7}{100}$	$\frac{12.6}{125}$	$\frac{14.3}{150}$

T, P 4.94 94.81 16.26 . 89.87

	86.2	84.8	83.7	82.7	81.4	80.6	80.0
3+754	$\frac{8.6}{225}$	$\frac{10.0}{250}$	$\frac{11.1}{275}$	$\frac{12.1}{3+775}$	$\frac{13.4}{325}$	$\frac{14.2}{350}$	$\frac{14.8}{375}$



89.3	90.9	93.1	94.8	96.9	98.7	100.5	102.3	104.18
<u>16.8</u>	<u>15.2</u>	<u>13.8</u>	<u>11.2</u>	<u>9.2</u>	<u>7.4</u>	<u>5.6</u>	<u>3.8</u>	<u>1.95</u>
200	175	150	125	100	75	50	25	00

93.1	89.7
<u>130.7</u>	<u>16.2</u>
175	200

Sta	+	HI	-	P	E
B.M.	7.69	107.69			100.00
Z				1.2	106.49
T.P.			0.32		107.37
	5.20	112.57			
Y				2.43	110.14
X				1.92	110.65
A				1.30	111.27
B.				1.00	111.57
C				1.22	111.35
D				1.87	110.70
E				2.78	109.79
F				3.62	108.95
G				4.04	108.53
H				4.88	107.69
I				5.44	107.13
J				6.82	105.75
K				7.88	104.69
2 nd B				12.41	100.16
3 rd B.				9.39	103.18
B.m.				8.63	103.94
Home				7.03	105.54

Grade

• Top N.E. Cor Lower Steps.

105.0 C. 1 49

105.0 C. 5 14

105.0 C. 5 65

105.0 C. 6 27

105.0 C. 6 57

105.0 C. 6 35

104.5 C. 6 20

104.2 C. 5 57

103.9 C. 5 05

103.7 C. 4 83

103.5 C. 4 19

103.3 C. 3 83

103.1 C. 2 65

103.0 C. 1 69

102.0 F. F 84

103.5 F. 0 22

103.2 On Base of Big Tree on extension of A - 3.B line

105.0 C. 0 54

CS FILE FOLDER

CONTAINS

MORE

INFORMATION