

520° 45' W
USE
DIST 698.8

20° 45' = 19° 21'
diff 1024'

20 45
19 21
24

REESSE TRACT.

Beginning at a 12 inch oak post in Section 19, Township 25 South, Range 5 West, the Northeast corner of Lot 5, Plat "L" of The Sutherlin Land and Water Company as surveyed, platted and recorded in the office of the County Clerk of Douglas County, Oregon, from which point the Northeast corner of Claim 457 in Township 25 South, Range 5 West of the Willamette Meridian bears South 20 degrees, 45 minutes West 512.0 feet and South 54 degrees 47 minutes East a distance of 1646.9 feet;

Thence North 88 degrees, 44 minutes West along the North line of Plat L a distance of 1351.2 feet to the Northwest corner of Plat L aforesaid;

Thence North 6 degrees, 54 minutes East a distance of 748.1 feet to a post marked "S";

Thence South 89 degrees, 55 minutes East a distance of 1180.6 feet to a hub;

Thence South 20 degrees, 45 minutes West along the West line of one acre tract heretofore conveyed, a distance of 125.0 feet to a hub;

Thence South 89 degrees, 55 minutes East along South line of one acre tract heretofore conveyed, a distance of 372.3 feet to County Road;

Thence South 20 degrees, 45 minutes West along West line of County Road a distance of 698.8 feet to place of beginning, and containing 24.28 acres, more or less.

NOT REGISTERED.

C. S. File No. 22/2

File under Reese

Page 1 of 1

Traverse Notes for Check Traverse

L. G. HICKS
 CIVIL ENGINEER
 ROSEBURG, OREGON

Calculated by Hicks
 Checked by _____
 Date May 3 1917

STATION	DISTANCE	BEARING	EAST	TOTAL EAST	WEST	TOTAL WEST	NORTH	TOTAL NTH	SOUTH	TOTAL STH	D. M. D.	NORTH	SOUTH
	283.0	S 20° 29' W			12.3				282.7				
	938.6	N 78° 27' E	919.6				187.9						
	269.7	S 84° 28' E	268.4						26.0				
	624.7	S 90° 26' E	102.4						616.3				
	698.8	N 19° 21' E	231.5				659.3						
	372.3	N 89° 55' W		372.3			0.5						
	125.0	N 20° 45' E	44.3				116.9						
	1180.6	N 89° 55' W		1180.6			1.7						
			1866.2		1865.2		966.3		825.0				
							28						
							41.3						

File under Reese

Page 1 of 1

Traverse Notes for check traverse

L. G. HICKS
CIVIL ENGINEER
ROSEBURG, OREGON

Calculated by _____
Checked by _____
Date _____
191

STATION	DISTANCE	BEARING	EAST	TOTAL EAST	WEST	TOTAL WEST	NORTH	TOTAL N TH	SOUTH	TOTAL S TH	D. M. D.	NORTH	SOUTH
	300.0	N65°29'E	273.0	273.0	44.3	44.3	124.5	124.5	116.9	116.9			
	125.0	S20°45'W			232.7	232.7			6.8	6.8			
	232.8	S88°19'W											
			273.0	273.0			124.5	124.5	123.7	123.7			
	372.3	S89°55'E	372.3	372.3					0.5	0.5			
	336.5	S82°40'W			333.8	333.8			43.0	43.0			
	269.7	N84°28'W			268.4	268.4	26.0	26.0					
	232.8	N88°19'E	232.7	232.7			6.8	6.8					
					605.0	602.2	32.8	32.8	43.5	43.5			

File under Reese

Page 1 of 1

Traverse Notes for Random Travers

L. G. HICKS
CIVIL ENGINEER
ROSEBURG, OREGON

Calculated by Hicks
Checked by Speck
Date May 2 1917

STATION	DISTANCE	BEARING	EAST	TOTAL EAST	WEST	TOTAL WEST	NORTH	TOTAL N TH	SOUTH	TOTAL S TH	D. M. D.	NORTH	SOUTH
SE Cor Post.	✓ 190.0	✓ N85°00'W.			✓ 189.3		✓ 16.6						
"0"	✓ 1150.4	✓ N89°48'W.			✓ 1150.4		✓ 4.0						
1	✓ 438.2	✓ N.6°22'E.	✓ 48.6				✓ 435.5						
2	✓ 938.6	✓ N78°27'E	✓ 919.6				✓ 187.9						
3	✓ 269.7	✓ S84°28'E	✓ 268.4					✓ 26.8					
4	✓ 624.7	✓ S90°26'E	✓ 102.4					✓ 616.3					
to beg					✓ 1339.0		✓ 644.0		✓ 642.3				
					✓ 1339.7		✓ 2.3						
							✓ 1.7						

File under Reos

Page 1 of 1

Traverse Notes for Check Traverse

L. G. HICKS
 CIVIL ENGINEER
 ROSEBURG, OREGON

Calculated by _____
 Checked by _____
 Date _____

191

STATION	DISTANCE	BEARING	EAST	TOTAL EAST	WEST	TOTAL WEST	NORTH	TOTAL N TH	SOUTH	TOTAL S TH	D. M. D.	NORTH	SOUTH
4th Corn 1 Gate	✓ 300.0	S 66° 53' W			275.9				117.8				
	✓ 269.7	S 83° 04' E	267.7						32.6				
	✓ 336.5	N 84° 04' E	334.7				34.8						
	✓ 372.3	N 89° 55' W			372.3		0.5						
	✓ 125.0	N 20° 45' E	44.3				116.9						
<u>to beg.</u>													
			646.7		648.2		152.2		150.4				

22/2

Vol 64 - p 492 ✓

Req at center of Road

11.35 chs N and 10.45 chs

N of SE Ext Cor of Sec

Tract D & Q No 53 in 25-5

N $19^{\circ}45'$ — [?] 11.15 chs ✓

S $89\frac{1}{2}^{\circ}$ W 20.05 ✓

S 90° W 10.55 ✓

N $89\frac{1}{2}^{\circ}$ E 18.04 to beg ✓

20 acres

Rees to J. Hudson

Duke & H & Rose
Vol 64 - 402

Begin N E in Spirit Court
S L 7053

62
428
9

West 24.65

S 70° 15' W 47.35

N 89° 20' E 15.85

N 19 $\frac{3}{4}$ ° E 44.00 to Elmwood

North 4.73 to beg

97⁰⁰ acres

c/c

H.S. Reed + auto & Reed
to Eva Henderson

area at a pt 0.35 Ehs W
and N 90° E 8.90 Ehs of the
NW Cor of J. Holman & Co
No 37-25-15

N 90° E 3.26

N 89½° 18.04

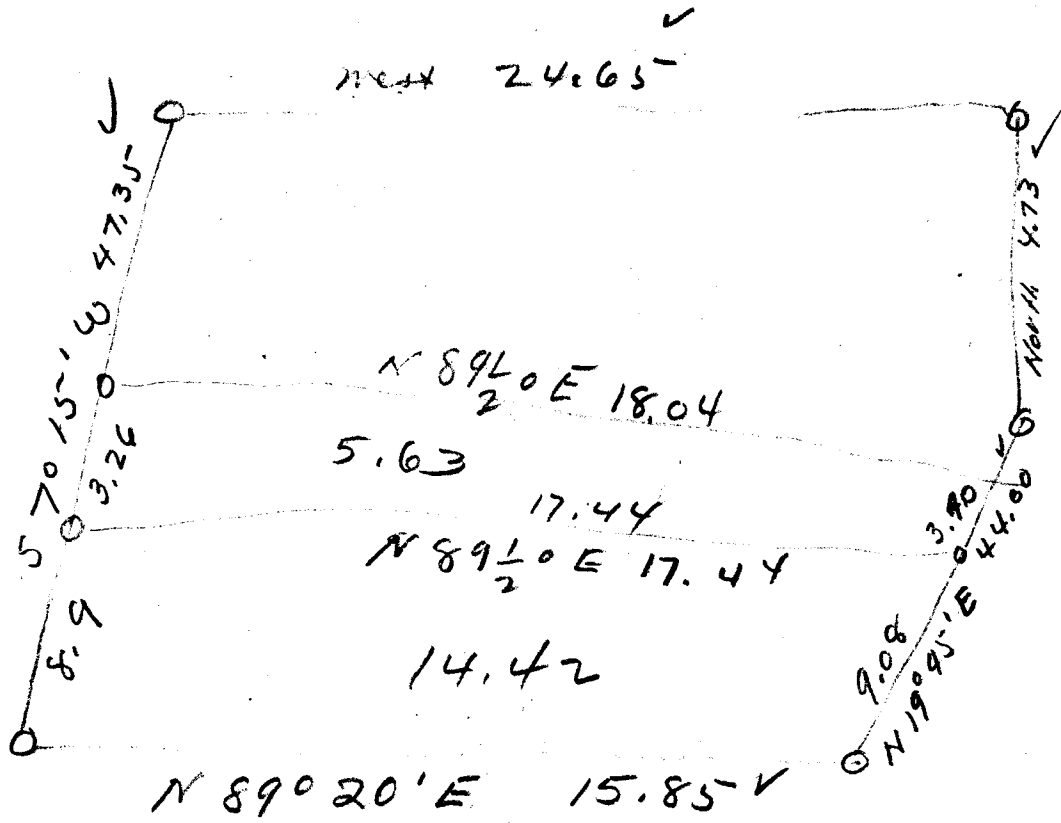
S 19° 45' W 3.40

S 89½° W 17.44

5.63

II

22/2



22/2