

46

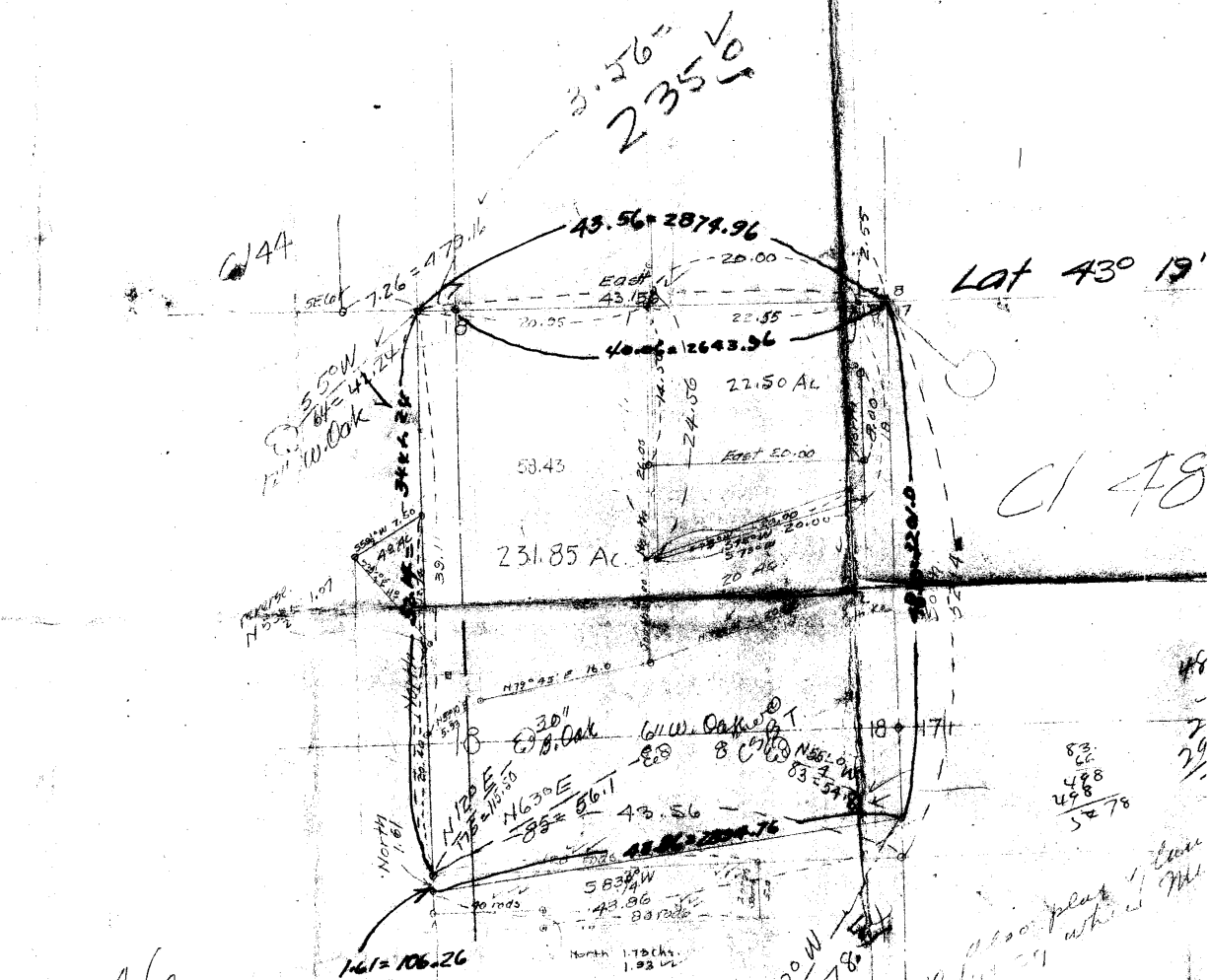
$$\begin{array}{r} 521.6 \\ 312.8 \\ \hline 314.124 \\ 66.6 \\ \hline 3507.84 \end{array}$$

$$\begin{array}{r} 66.6 \\ 3441.2 \\ \hline 3507.8 \end{array}$$

$$\begin{array}{r} 112 \\ 66 \\ \hline 6672 \\ 7392 \\ \hline 13992 \end{array}$$

5720W
119 = 78
15" B.P
CSBT

Lot 43 0 1

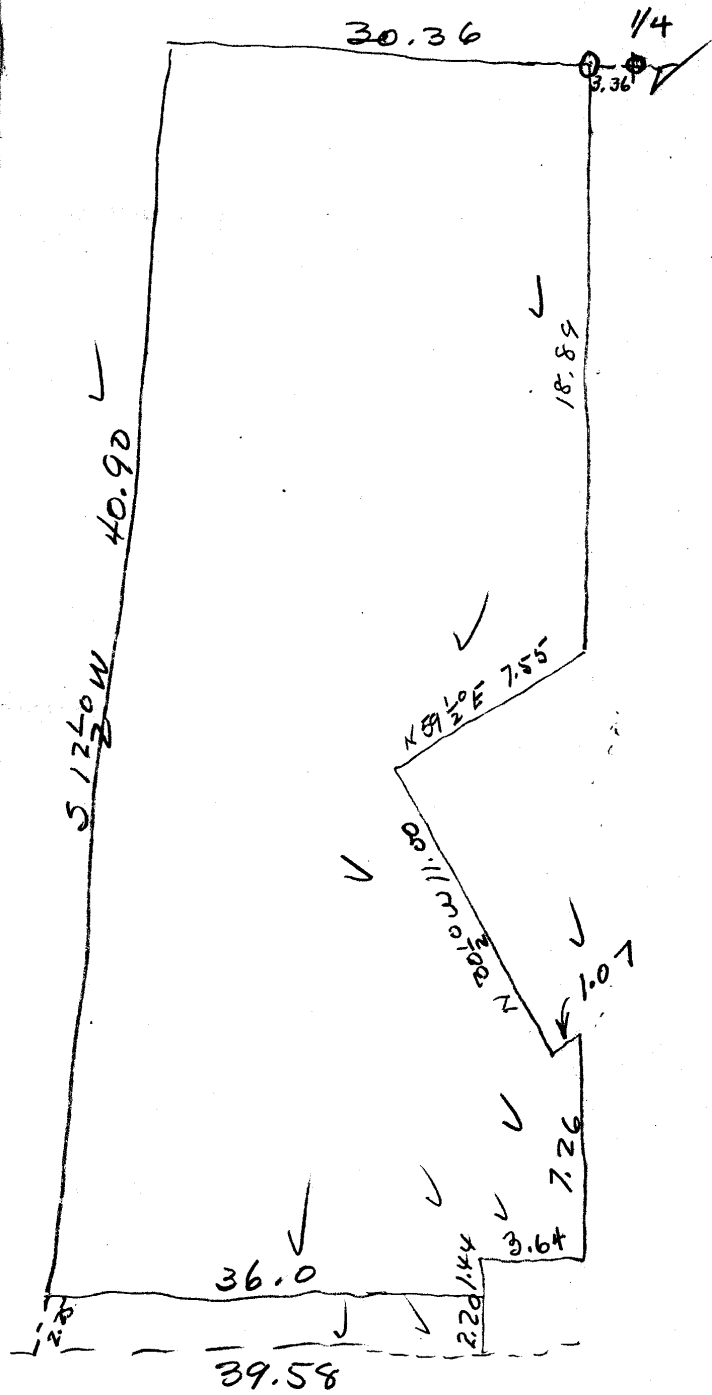
$$\begin{array}{r} 121.66 \\ 726 \\ \hline 726 \end{array}$$


$$\begin{array}{r} 83.66 \\ 498 \\ \hline 498 \\ 5278 \end{array}$$

$$\begin{array}{r} 19.66 \\ 714 \\ \hline 714 \\ 78 \end{array}$$

$$\begin{array}{r} 103.4 \\ 374 \\ \hline 374 \end{array}$$

10 1/2 000' plat
1/4 section
with 1/4



Beginning at the common corner to sections 7-8-17-18, in Township 26 South, Range-5-west of the Willamette Meridian in the county of Douglas, State of Oregon, said point being a four inch by four inch Oak post and from which a 16 inch Fir bears S42°W 21.7 feet; a 7 inch Fir bears S17°W 13.8 feet; a 14 inch Fir bears N53°E 30.0 feet and a 22 inch Oak bears S39½°E, 36.3 feet;

Thence S00°03'E along the section line between sections 17 and 18 a distance of 2644.8 feet to a four inch by four inch oak post, the one quarter corner between sections 17 and 18, from which an 18 inch Black Oak bears S40½°W, 35.0 feet; a 14 inch W. Oak bears N73°W a distance of 24.2 feet and

a 22 inch Black Oak bears (2)
N 10° E, 23.8 feet;

Thence S $00^{\circ} 13'$ E a distance
of 556.8 feet to south East Corner
of tract, a four inch by four
inch cedar post, from which a
24 inch Black Oak bears S 72° W
78.5 feet and a 12 inch W. Oak
bears N $55\frac{1}{4}^{\circ}$ W, 54.8 feet;

Thence S $84^{\circ} 56'$ W a distance
of 2885.0 feet to the South west
corner of tract, an Oak
post, from which a White Oak
bears N. $29\frac{1}{2}^{\circ}$ E. 103.4 feet;

Thence N. $1^{\circ} 02'$ W a distance
of 66.4 feet to a six inch by
six inch stone, the South west
corner of Donation Land Claim

No 48 in Township 26. South (3)
Range 5 West;

Hence $N1^{\circ}24' E$ along the west
line of Donator's Land Claim
No 48 a distance of
3403.2 feet to an oak tree,
the Northwest Corner of west end of Claim No 48,
from which an 8 inch Laurel
tree $S30\frac{1}{2}^{\circ}W$, 24.5 feet; a
12 inch Laurel tree $S14^{\circ}E$
55.2 feet and an 8 inch
Black Oak tree $N73\frac{1}{4}^{\circ}W$
12.0 feet;

Hence $S89^{\circ}45'E$ a distance
of 2786.9 feet to place of
beginning, and containing
216.64 acres more or
less.

SE Cor 44 in 26.5"
51 in 26.6

Box at SE Cor of Cl 44
on N line of Cl 46 on line
Wet Dec 7-18 T-26-S R-5-W

B Oak 20" S 87° E 46

B Oak 18" S 25° E 127

North 40.00 to NE Cor of
Cl 44 and SE Cor Cl 45
SW Cor Cl 43

B. Oak 15" N 63° E 353

West on N line of Cl 44 and S1

B 39 468 ^{1.01} ↗ April 26 - 1900

Begin at SW Cor of Union Hall
it is a stone well burned with white
Oak BT

Run S 1.01 chs set post from
which a wh Oak 20" dia bears
N 40° E 112 lks distant

Same BT as for Q46

Then go to 1/4 Sec 18 bet files
18-17, cor bet files 18 and 17
reset same post

Run South 8.50 chs set post
from which a W Oak 8" bears N 55 1/4° W
83 lks, a black oak 15" bears
S 72° W 119 lks, thence S 83 3/4° W. Var 20° E
43.86 chs to opp Cor x

B 62

39

South
1.61
over
north
1.01

CS FILE FOLDER

CONTAINS

MORE

INFORMATION