

Description of Lot 92 in Tract I, Plat I, Roseburg Orchards Company.

Beginning at a point on the South side of Dedicated Road and being the North-west Corner of Lot 92 of Tract I, Plat I of the Roseburg Orchards Company as surveyed, platted and recorded in the office of the County Clerk of Douglas County, Oregon; and from which the one-quarter corner between Sections 5 and 6, in Township 27 South, Range 5 West of the Willamette Meridian, bears South 80 degrees 45 minutes East a distance of 236.4 feet;

Thence Along South side of Dedicated Road North 40 degrees 26 minutes East a distance of 722.8 feet;

Thence along South side of road North 67 degrees 57 minutes East a distance of 115.9 feet;

Thence along west side of road South 49 degrees 54 minutes East a distance of 582.2 feet;

Thence along west side of road South 24 degrees 41 minutes East a distance of 543.4 feet;

Thence South 40 degrees 45 minutes West a distance of 951.6 feet to South west corner of lot;

Thence North 31 degrees 25 minutes West a distance of 1129.7 feet to place of beginning and embracing all of Lot 92, in said Tract I, Plat I Roseburg Orchards Company and containing 23.46 acres more or less.

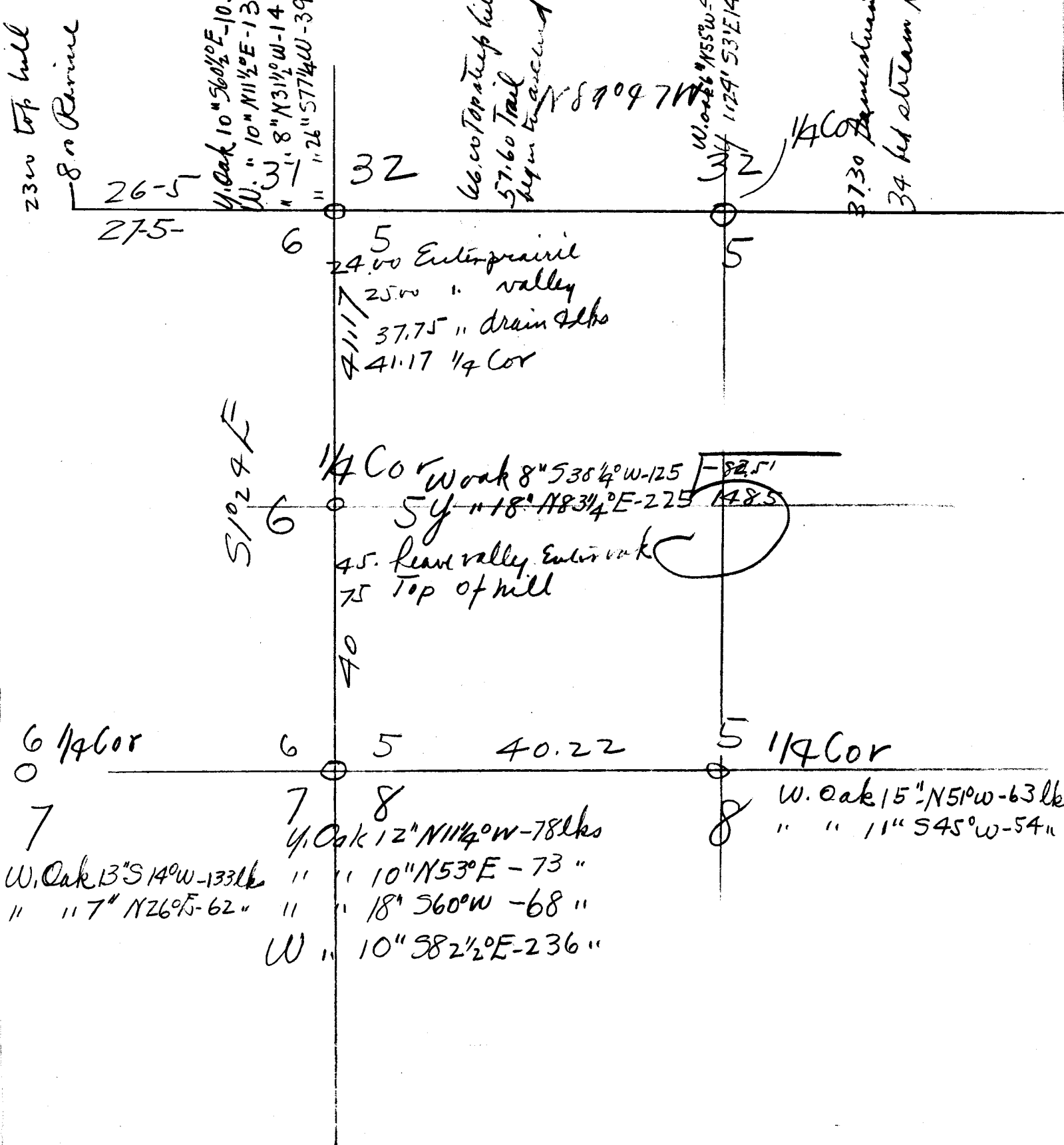
The above described Lot contains 23.46 acres.

Of the above, 14.48 acres are hill land and 8.98 acres of tillable land.

-----  
Civil Engineer.

21/3

21/3



2300 top hill  
800 Ravine

26-5  
27-5  
U. Oak 10" S60 1/2° E - 103  
W. " 10" N11 1/2° E - 138  
" 3" 8" N31 1/2° W - 147  
" 1" 26" S77 1/4° W - 391

32  
66.00 Top steep hill  
57.60 Trail  
449 m to road  
N 89° 09' 7" W

W. Oak 11" S55° W - 422  
W. " 1129' S31° E - 146  
1/4 Cor  
3730  
34 bed stream N

6  
24.00 Enterprise valley  
25.00 " valley  
37.75 " drain dikes  
41.17 1/4 Cor

5  
41.17 1/4 Cor

S 1/2 9 E  
6

1/4 Cor  
W. Oak 8" S38 1/4° W - 125  
54 " 18" N83 1/4° E - 225  
45. Rear valley Enterprise  
75 Top of hill

82.5'  
148.5'

6 1/4 Cor  
7

40  
6  
5  
40.22

5 1/4 Cor  
8  
W. Oak 15" N51° W - 63 lbs  
" " 11" S45° W - 54 "

W. Oak 13" S14° W - 133 lbs  
" " 7" N26° E - 62 "

U. Oak 12" N11 1/4° W - 78 lbs  
" " 10" N53° E - 73 "  
" " 18" S60° W - 68 "  
W " 10" S82 1/2° E - 236 "

8

CS FILE FOLDER

CONTAINS

MORE

INFORMATION