

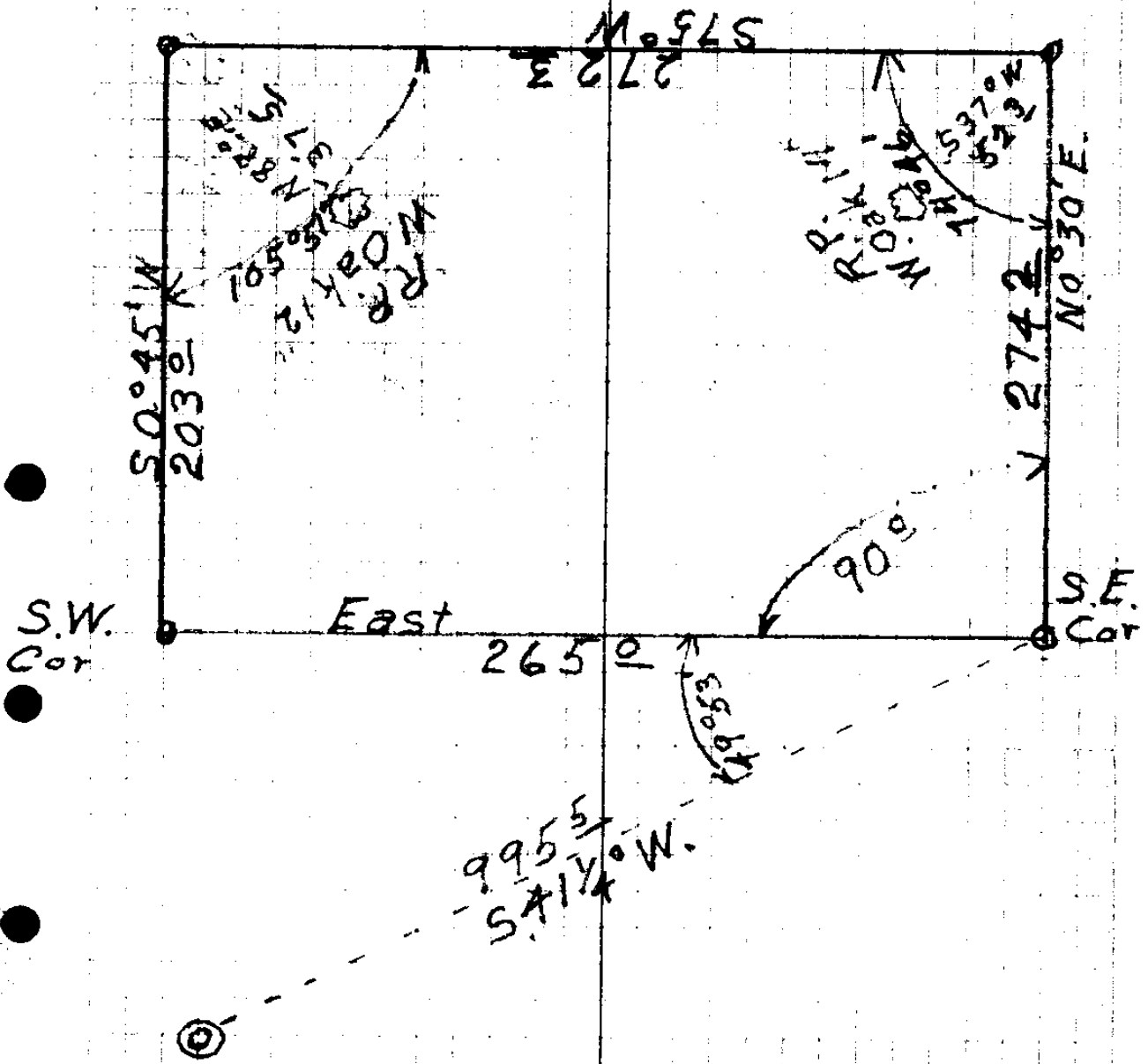
Charles Chapman

1807
842

2650

6/21/35

H & App
NE Richardson
Casebeer
Chas Chapman



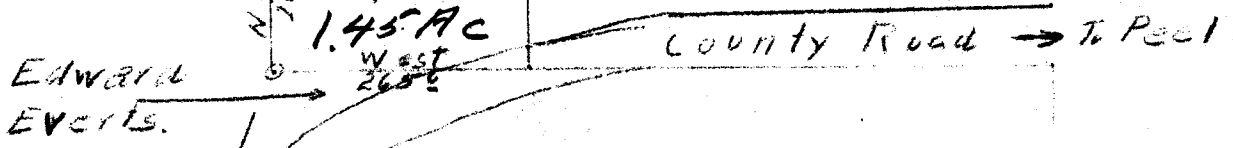
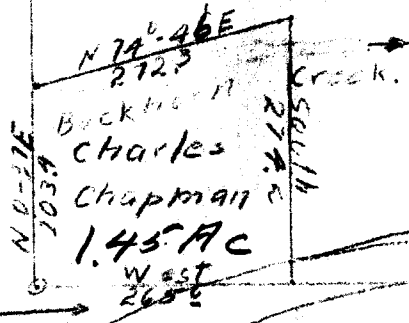
S.W. Cor. Sec. 31 T 26 S. R 3 W.

19/43



A Tract
 From Ruth Casebeer
 to
 Charles Chapman
 in
 Sec. 31, T. 26 S. R. 3 W. W. M.
 H. L. Eppstein C. S. U. V.
 June 21, 1935 Scale 1" = 200'

Ruth Casebeer



Charles Chapman.

N 26° 19' E
 879.8

36 31
 1 6

1942

CS FILE FOLDER

CONTAINS

MORE

INFORMATION