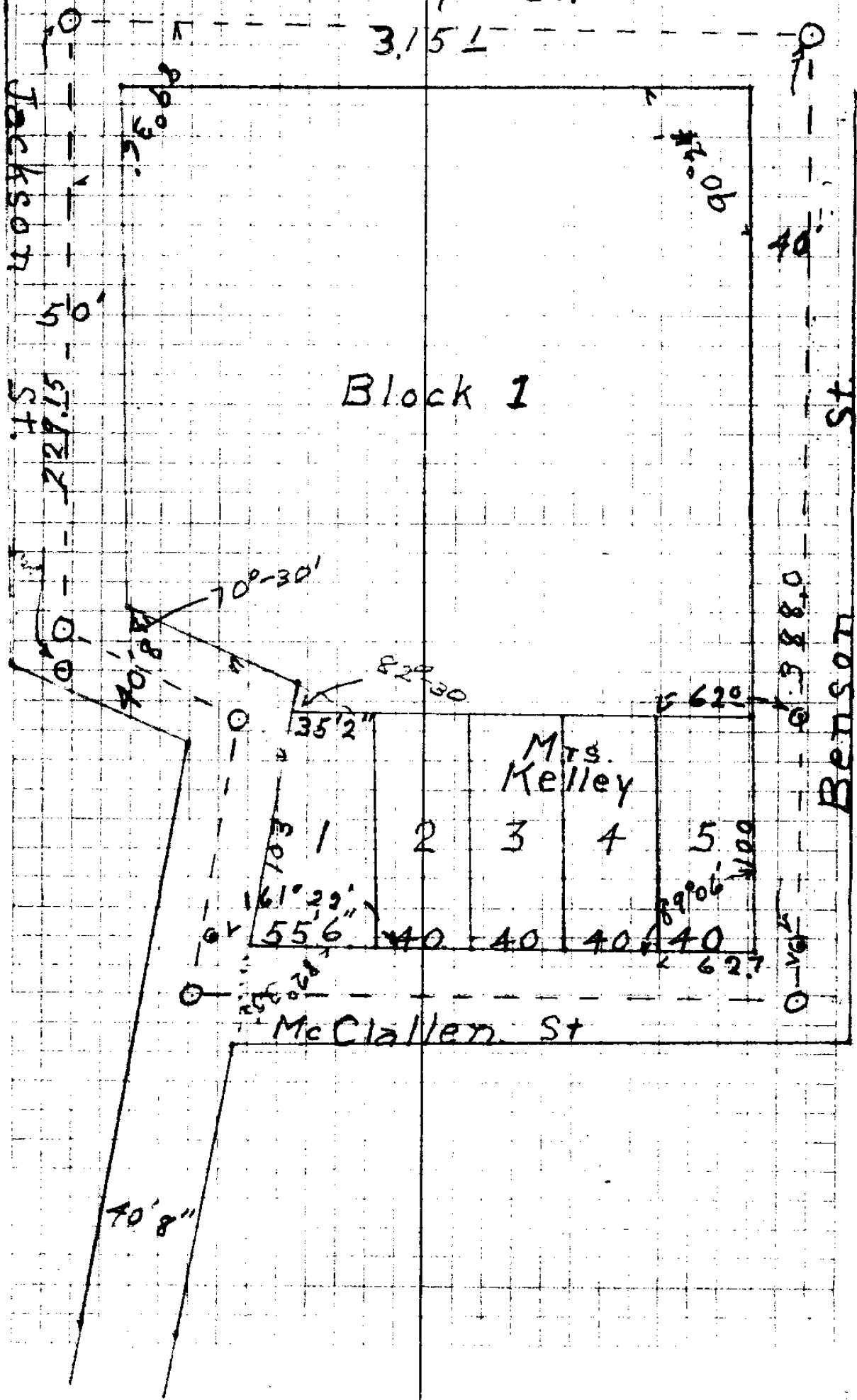


Kelley Survey
Blakeley St.

19-42

3.15 L



Block 1

Mrs. Kelley

McClallen St

Jackson St.

Benson St.

70'8"

161°-29'

55'6"

35'2"

2

3

4

5

62.0'

62.0'

70'8"

70°-30'

82°-30'

90°06'

89°30'

50'

57.75'

40'

62.0'

62.7'

0

0

0

0

0

0

0

0

0

0

0

0

0

0

0

0

0

0

0

0

0

0

0

0

0

0

0

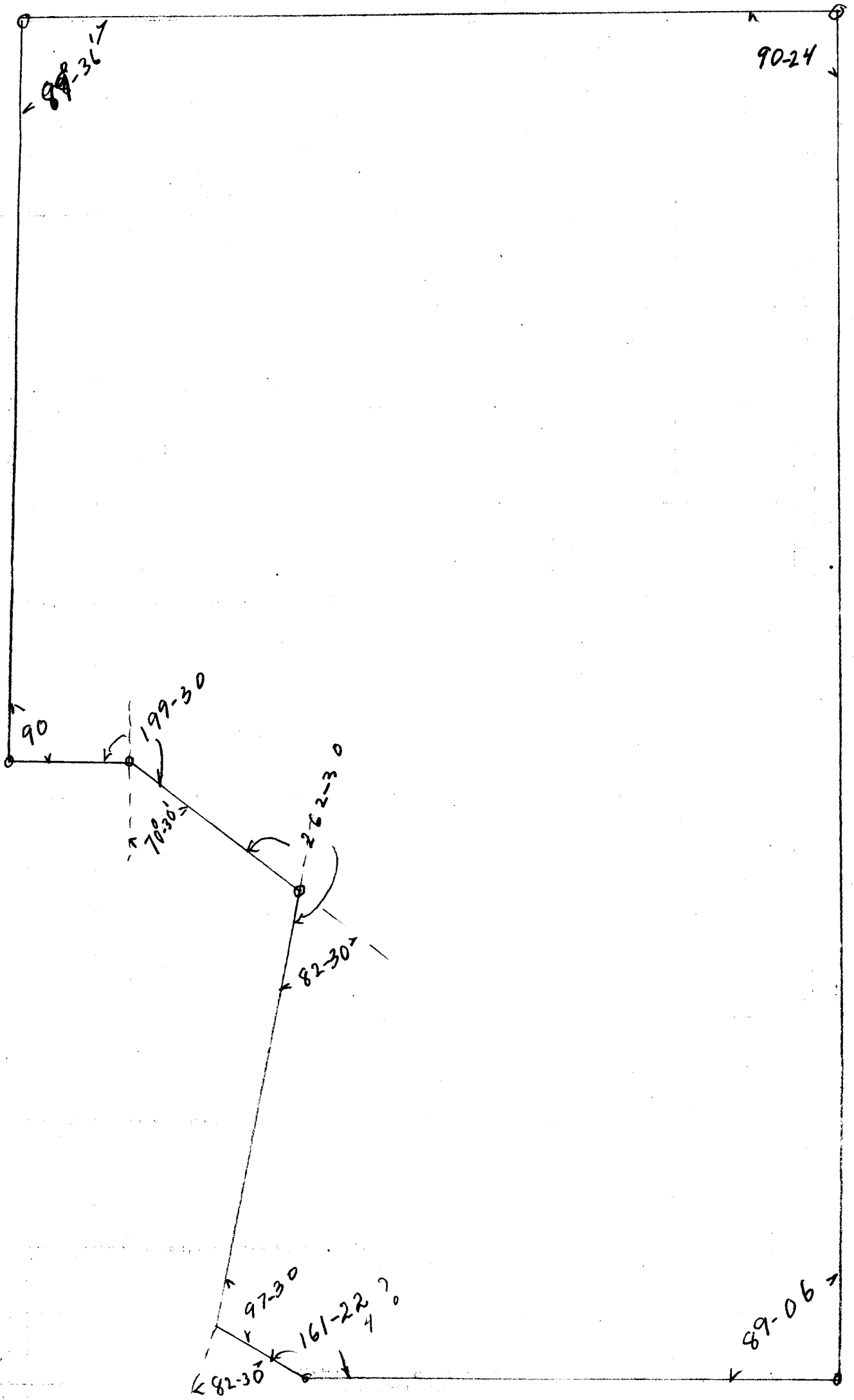
0

0

0

0

0



Mrs Kelley Survey

I began survey at the street monument at the intersection of Jackson St with Blakeley St, sighted out to monument at Blakeley Street and Benson St and chained distance between monument at 315.1 feet. Thence I sighted on a monument on Jackson St North and chained 229.65 feet, and at 205.6 feet at a point, Thence I turned on an angle of $90^{\circ}00'$ from previous line to right ^{25.4 feet} to a point marking NE corner of lot 17 Blk 1 with addition. Thence turned $70^{\circ}-30'$ of 16 west property line of Jackson St and ran 85 feet. Thence turn a reflection angle of $82^{\circ}-30'$ Right and ran 131.66 feet to a point marking NE corner of lot 1 Blk 1 with addition. Thence I return to St corner of Blakeley Street & Benson St and turn ~~an angle of~~ $90^{\circ}-24'$ off of monument at Jackson & Blakeley St and ran N $28^{\circ} E$ a distance 358.0 feet. Thence turned 89.06 interior angle to NE corner of lot 1, Blk 1 with addition. Distance 237.65 feet ~~of~~ 2.15 feet too far for the distance called for on South line of McCallen St. although being close up. Also the chain from the NE corner of lot 1 Blk 1 with addition and NE cor lot 3 & SW cor lot 4 Blk 1 said addition & Thence I set the SF corner of lot 3 & SW cor of lot 4 with addition, at the said corners of lots 3 & 4 I set iron pipe. Survey done carefully & measuring good.

CS FILE FOLDER

CONTAINS

MORE

INFORMATION